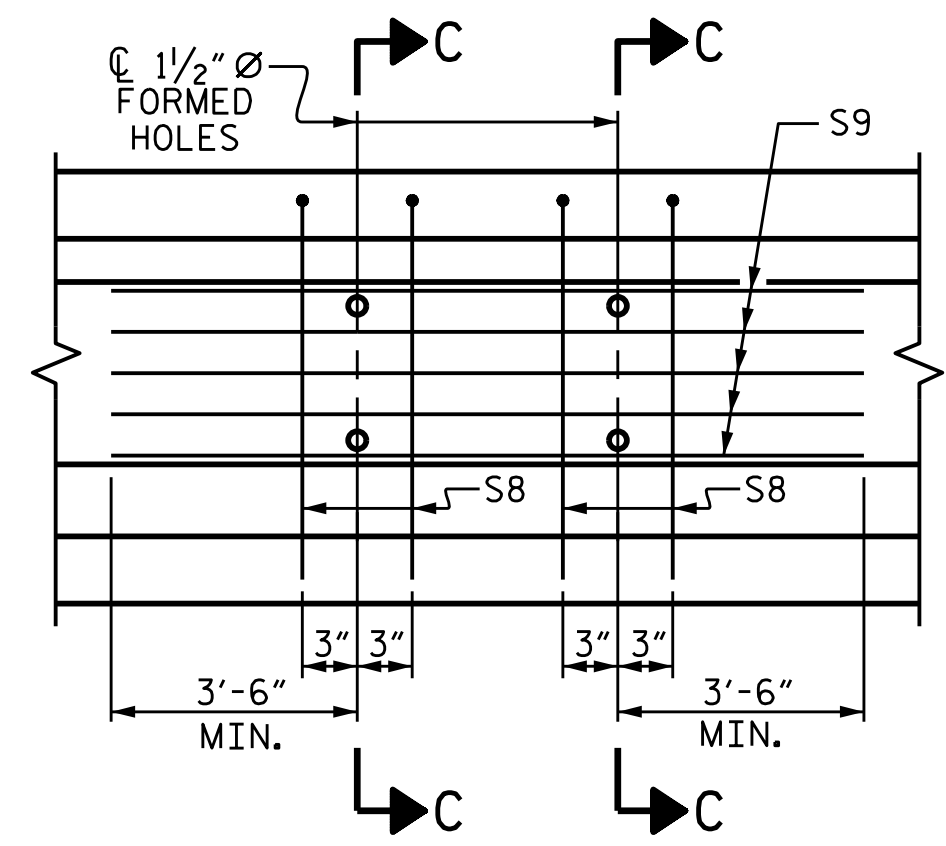
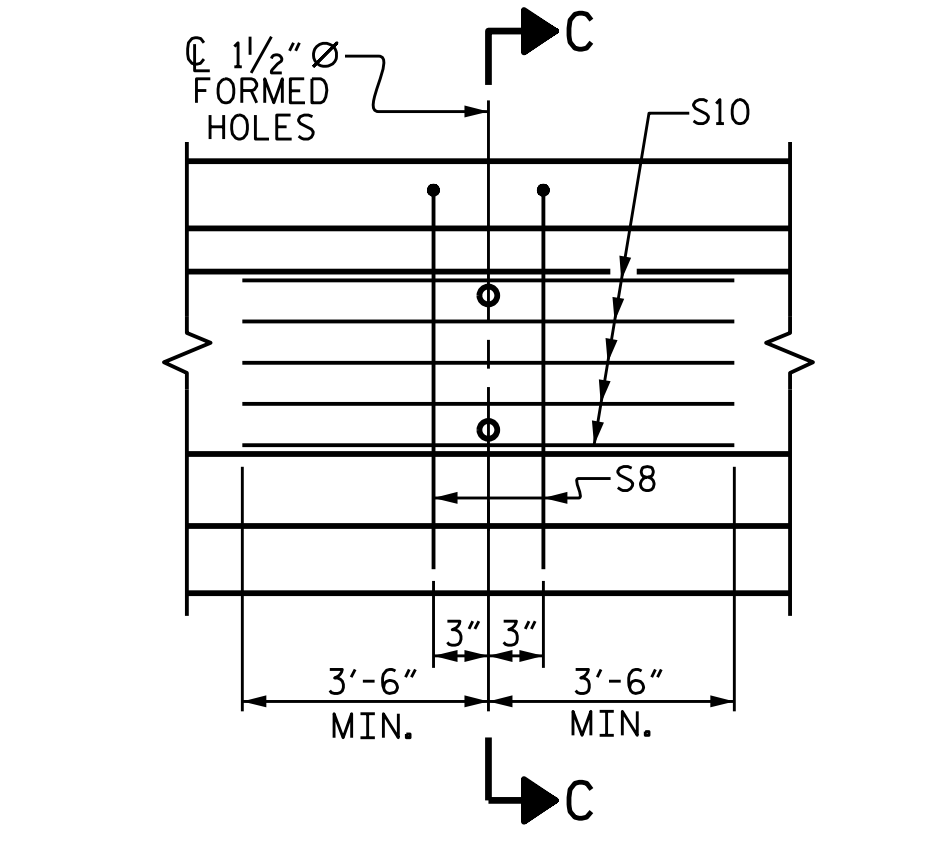


0.6" Ø LOW RELAXATION STRAND LAYOUT

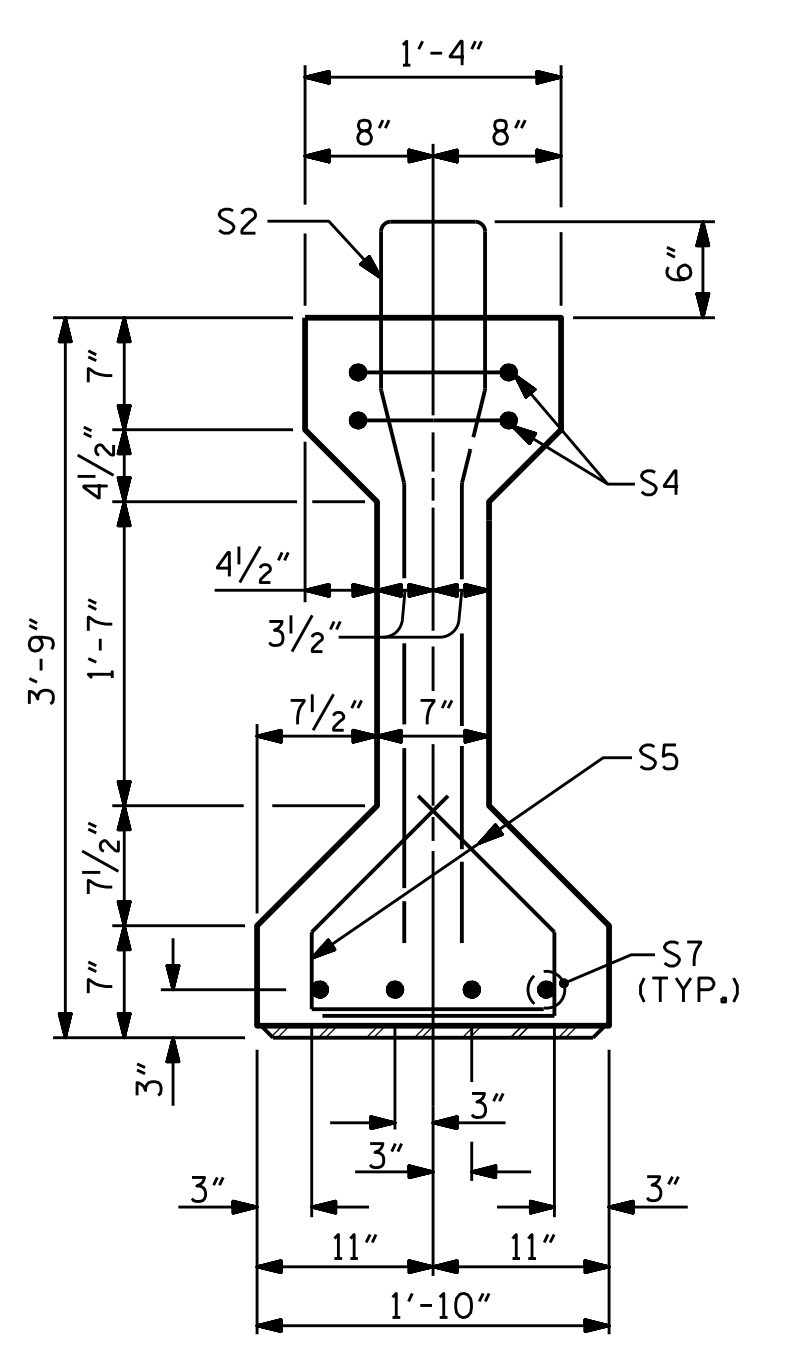
- ▲ STRANDS DEBONDED FOR A DISTANCE OF 8'-0" FROM END OF GIRDER.
- OPTIONAL FULLY DEBONDED STRANDS.



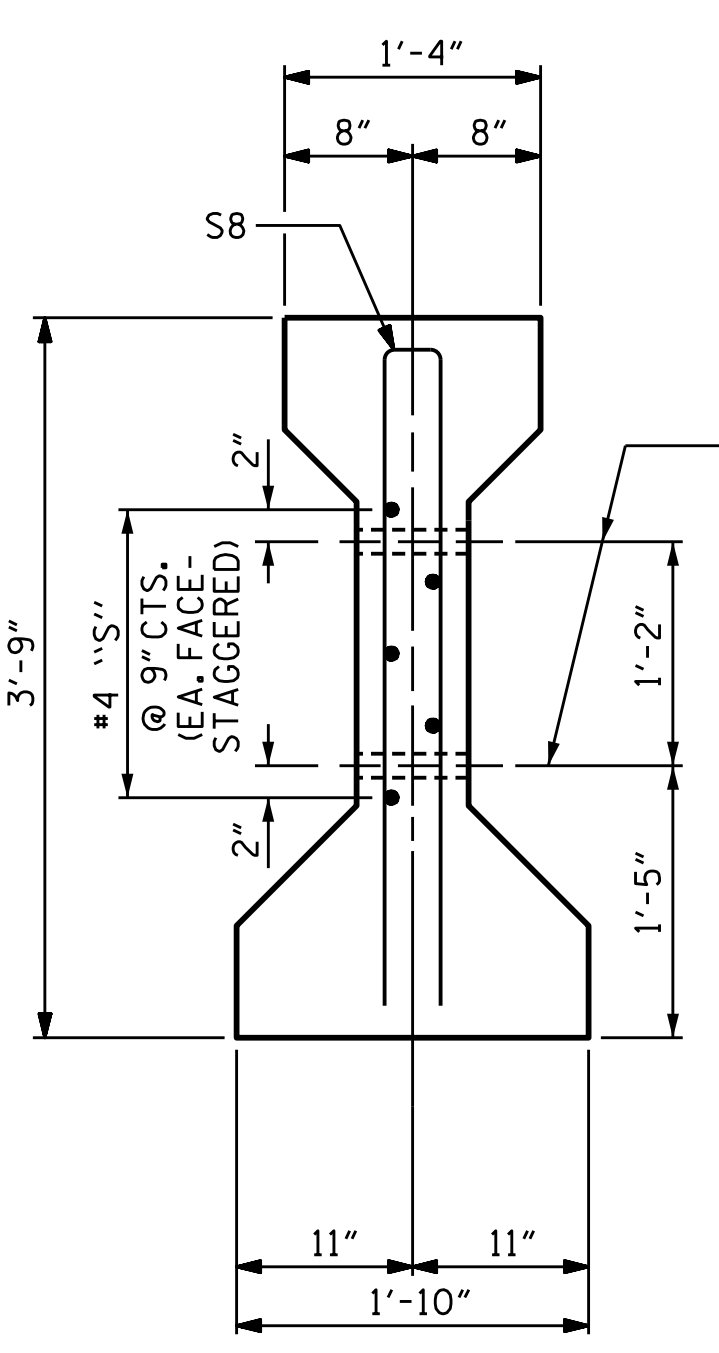
PARTIAL ELEVATION  
SHOWING INTERMEDIATE DIAPHRAGM REINFORCING STEEL FOR GIRDERS 2-4.



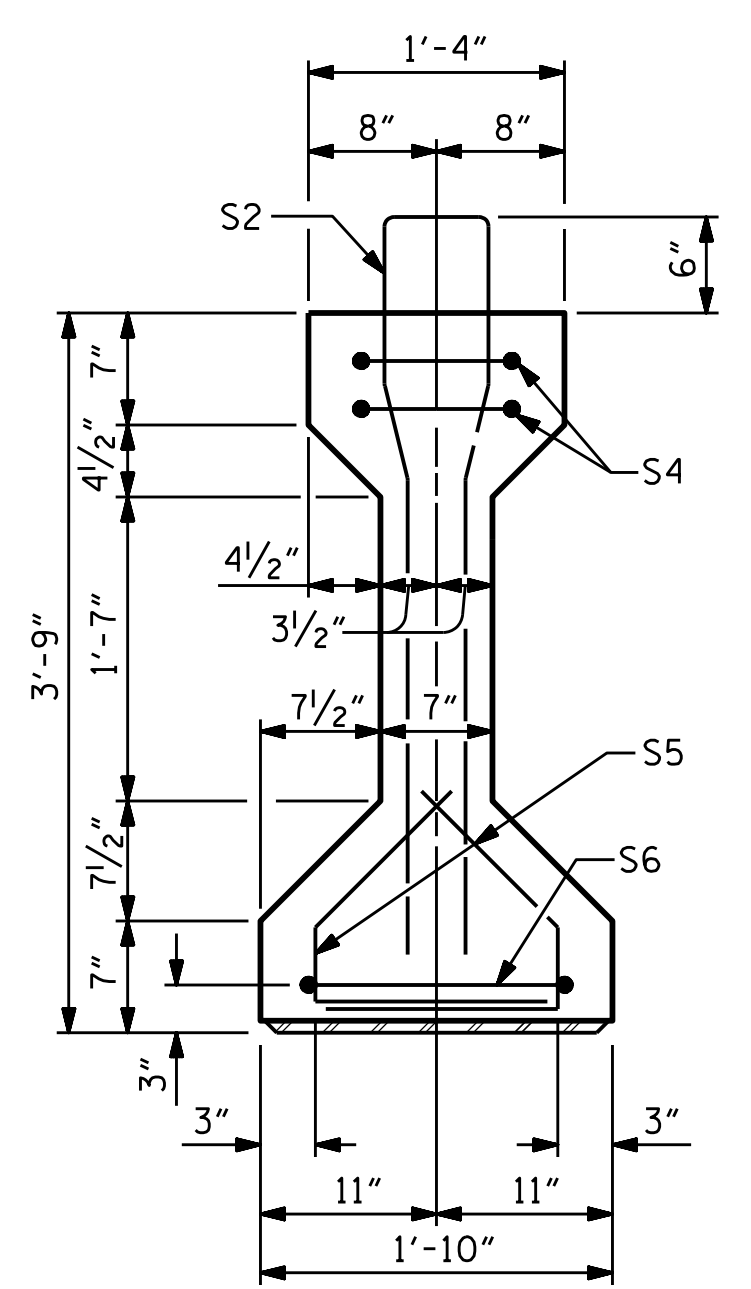
PARTIAL ELEVATION  
SHOWING INTERMEDIATE DIAPHRAGM REINFORCING STEEL FOR GIRDERS 1 & 5.



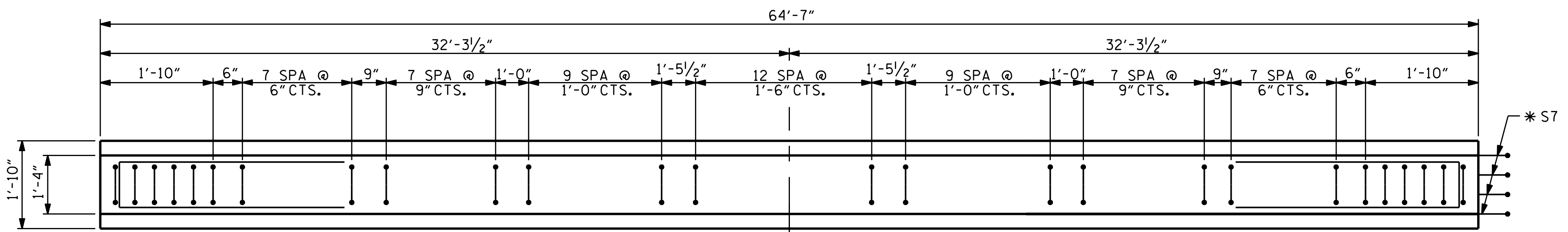
SECTION B-B



SECTION C-C  
(S3 BARS NOT SHOWN)



SECTION A-A



ELEVATION OF GIRDER

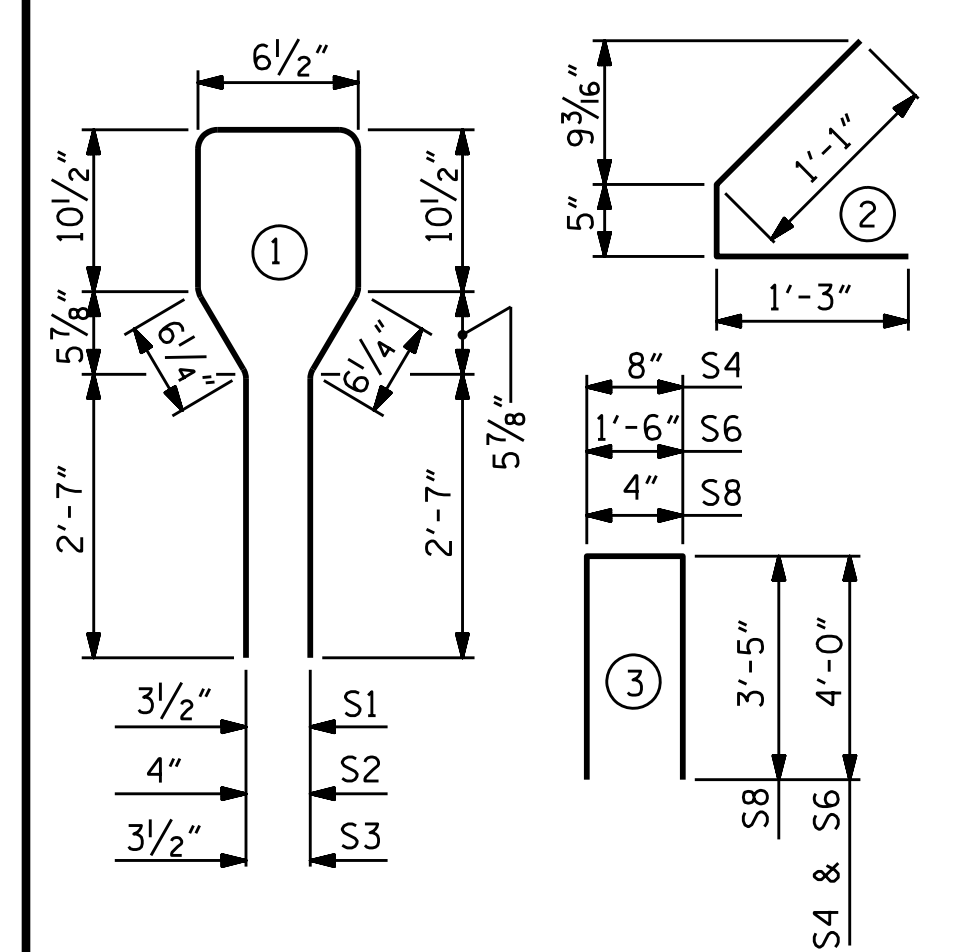
0.6" Ø L. R. GRADE 270 STRANDS		
AREA (SQ. INCHES)	ULTIMATE STRENGTH (LBS. PER STRAND)	APPLIED PRESTRESS (LBS. PER STRAND)
0.217	58,600	43,950

REINFORCING STEEL FOR ONE GIRDER					
BAR	NUMBER	SIZE	TYPE	LENGTH	WEIGHT
S1	16	#5	1	8'-6"	142
S2	12	#6	1	8'-6"	153
S3	49	#4	1	8'-6"	278
S4	4	#4	3	8'-8"	23
S5	56	#4	2	2'-9"	103
S6	1	#4	3	9'-6"	6
*S7	4	#5	STR	3'-8"	15
INTERIOR S8	4	#5	3	7'-2"	30
EXTERIOR S8	2	#5	3	7'-2"	15
INTERIOR S9	5	#4	STR	12'-0"	40
EXTERIOR S10	5	#4	STR	7'-0"	23

\* NOTE: S7 BARS SHALL BE BENT BEFORE SHIPMENT. HEAT BENDING SHALL NOT BE ALLOWED.

BAR TYPES

ALL BAR DIMENSIONS ARE OUT-TO-OUT



QUANTITIES FOR ONE GIRDER			
	REINFORCING STEEL LB.	7,000 PSI CONCRETE C.Y.	0.6" Ø L. R. STRANDS No.
GIRDER 2-4	790	9.3	18
GIRDER 1 & 5	758	9.3	18

GIRDERS REQUIRED

NUMBER	LENGTH	TOTAL LENGTH
5	64'-7"	322'-11"

PROJECT NO. B-4786  
PITT COUNTY  
STATION: 28+03.00 -L-

SHEET 1 OF 9

STATE OF NORTH CAROLINA  
DEPARTMENT OF TRANSPORTATION  
RALEIGH

STANDARD  
AASHTO TYPE III  
PRESTRESSED CONCRETE GIRDER  
CONTINUOUS FOR LIVE LOAD  
SPAN A

9/8/2021  
X:\MCDOT\B-4786\Structures\Final plans\DCNs\401.035.B4786.SMU.G1.017.dgn  
User:smossinople

9/8/2021  
X:\MCDOT\B-4786\Structures\Final plans\DCNs\401.035.B4786.SMU.G1.017.dgn  
User:smossinople

ASSEMBLED BY : STM DATE : 08/21  
CHECKED BY : MGC DATE : 08/21  
DESIGN ENGINEER OF RECORD : STM DATE : 08/21

DRAWN BY : ELR 8/91  
CHECKED BY : GRP 8/91

REV. 10/1/11 MAA/GM  
REV. 1/15 MAA/TMG  
REV. 12/17 MAA/THC

DOCUMENT NOT CONSIDERED FINAL UNLESS ALL SIGNATURES COMPLETED

TGS ENGINEERS  
706 HILLSBOROUGH STREET  
SUITE 200  
RALEIGH, NC 27603  
PH (919) 773-8887  
CORP. LICENSE NO.: C-0275

REVISIONS

NO.	BY:	DATE:	NO.	BY:	DATE:
1			3		
2			4		

SHEET NO. S-17  
TOTAL SHEETS 57

STD. NO. PCG5