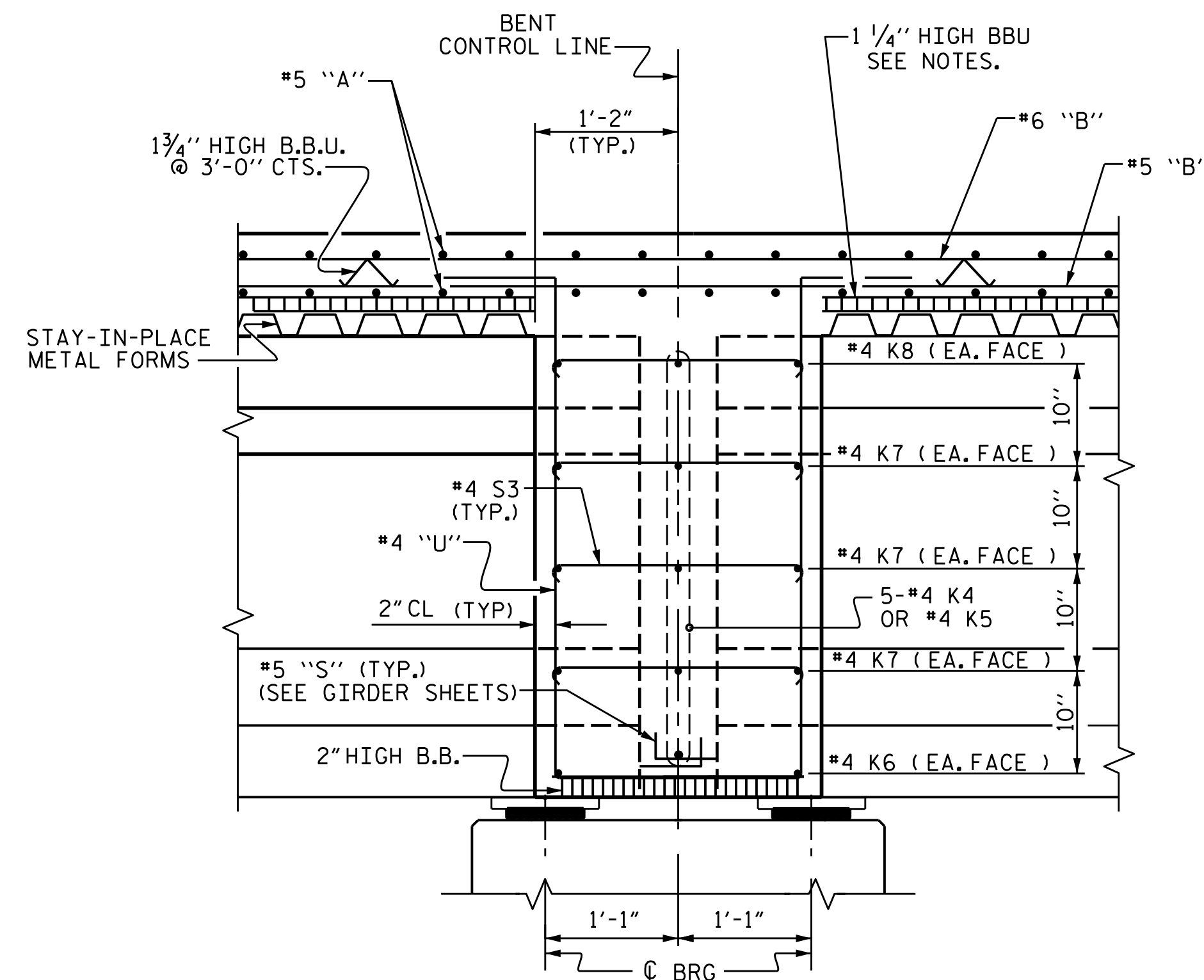


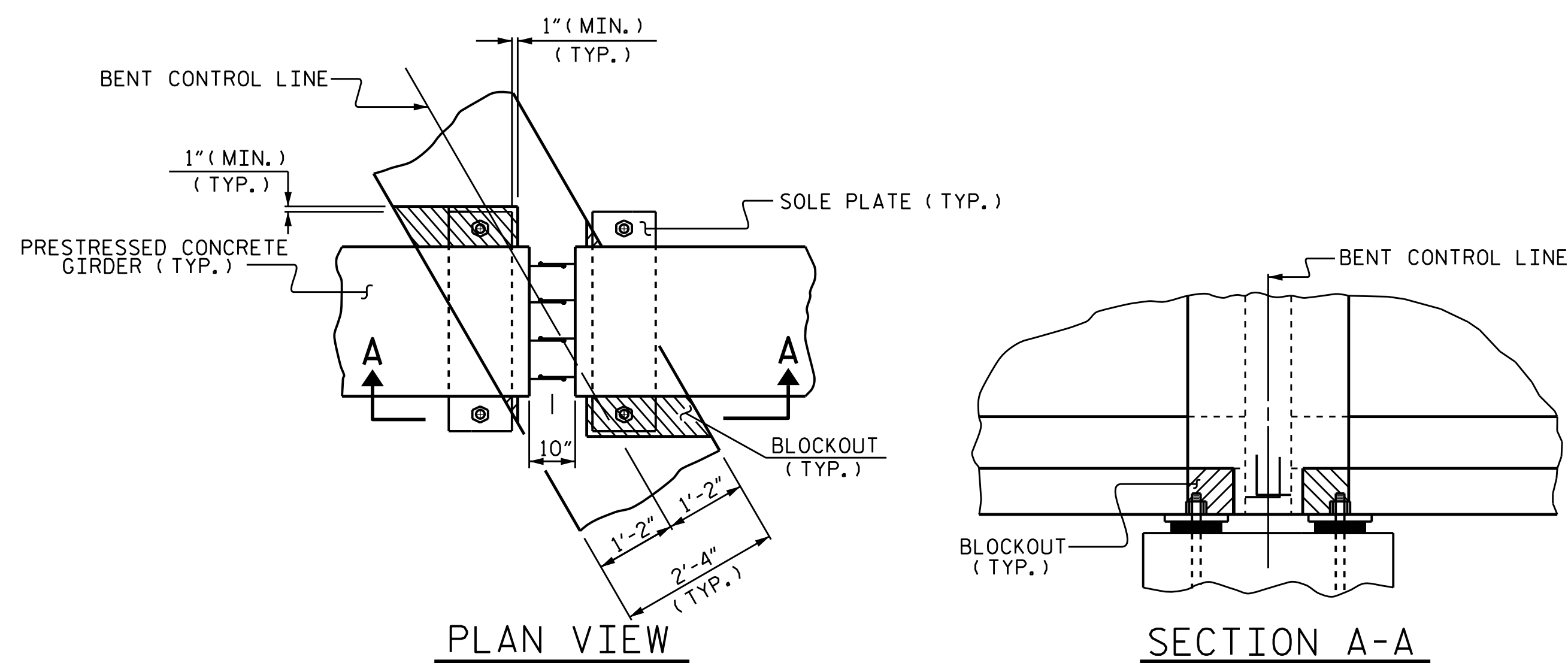
**SECTION A-A**

FOR LOCATION OF SECTION A-A, SEE "PLAN OF SPAN" SHEETS.



**SECTION B-B**

FOR LOCATION OF SECTION B-B, SEE "PLAN OF SPAN" SHEETS.



**PLAN VIEW**

**SECTION A-A**

**BENT DIAPHRAGM BLOCKOUT DETAIL**

**NOTES**

PROVIDE 1 1/4" HIGH BEAM BOLSTERS UPPER AT 4'-0" CTS. ATOP THE METAL STAY-IN-PLACE FORMS TO SUPPORT THE BOTTOM MAT OF 'A' BARS. WHEN USING REMOVABLE FORMS, PROVIDE CONTINUOUS HIGH CHAIRS FOR METAL DECK (C.H.C.M.) @ 4'-0" CTS. WITH A HEIGHT TO SUPPORT THE BOTTOM MAT OF 'A' BARS A CLEAR DISTANCE OF 2 1/2" ABOVE THE TOP OF THE REMOVABLE FORM.

LONGITUDINAL STEEL MAY BE SHIFTED SLIGHTLY, AS NECESSARY, TO AVOID INTERFERENCE WITH STIRRUPS IN PRESTRESSED CONCRETE GIRDERS.

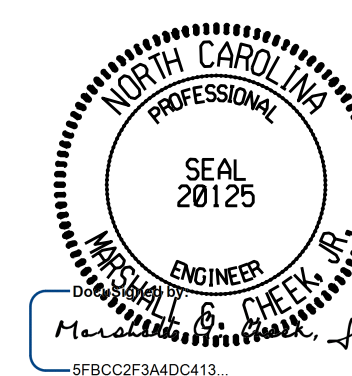
PREVIOUSLY CAST CONCRETE IN A CONTINUOUS UNIT SHALL HAVE ATTAINED A MINIMUM COMPRESSIVE STRENGTH OF 3,000 PSI BEFORE ADDITIONAL CONCRETE IS CAST IN THE UNIT.

BARRIER RAIL IN A CONTINUOUS UNIT SHALL NOT BE CAST UNTIL ALL SLAB CONCRETE IN THE UNIT HAS BEEN CAST AND HAS REACHED A MINIMUM COMPRESSIVE STRENGTH OF 3,000 PSI.

#5 G1 BAR MAY BE SHIFTED SLIGHTLY, AS NECESSARY, TO CLEAR REINFORCING STEEL AND STIRRUPS.

PROJECT NO. B-4786  
PITT COUNTY  
 STATION: 28+03.00 -L-

SHEET 2 OF 2



2/24/2022 | 7:41 AM EST

STATE OF NORTH CAROLINA  
 DEPARTMENT OF TRANSPORTATION  
 RALEIGH

SUPERSTRUCTURE  
 TYPICAL SECTION  
 DETAILS

DRAWN BY : SBW DATE : 8-18  
 CHECKED BY : MGC DATE : 11-18  
 DESIGN ENGINEER OF RECORD: TBE DATE : 8-19

9/23/2021  
 X:\NCDOT\B-4786\Structures\Final plans\DCNs\B-4786.SMU. T52.730038.dgn  
 Users\sbwilliams

DOCUMENT NOT CONSIDERED FINAL UNLESS ALL SIGNATURES COMPLETED						REVISIONS			SHEET NO.
NO.	BY:	DATE:	NO.	BY:	DATE:	S-10			
1			3			TOTAL SHEETS			
2			4			57			