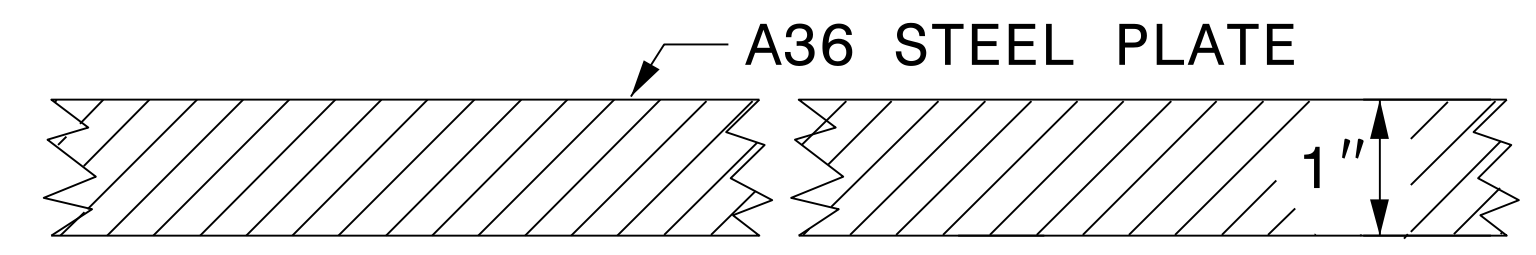


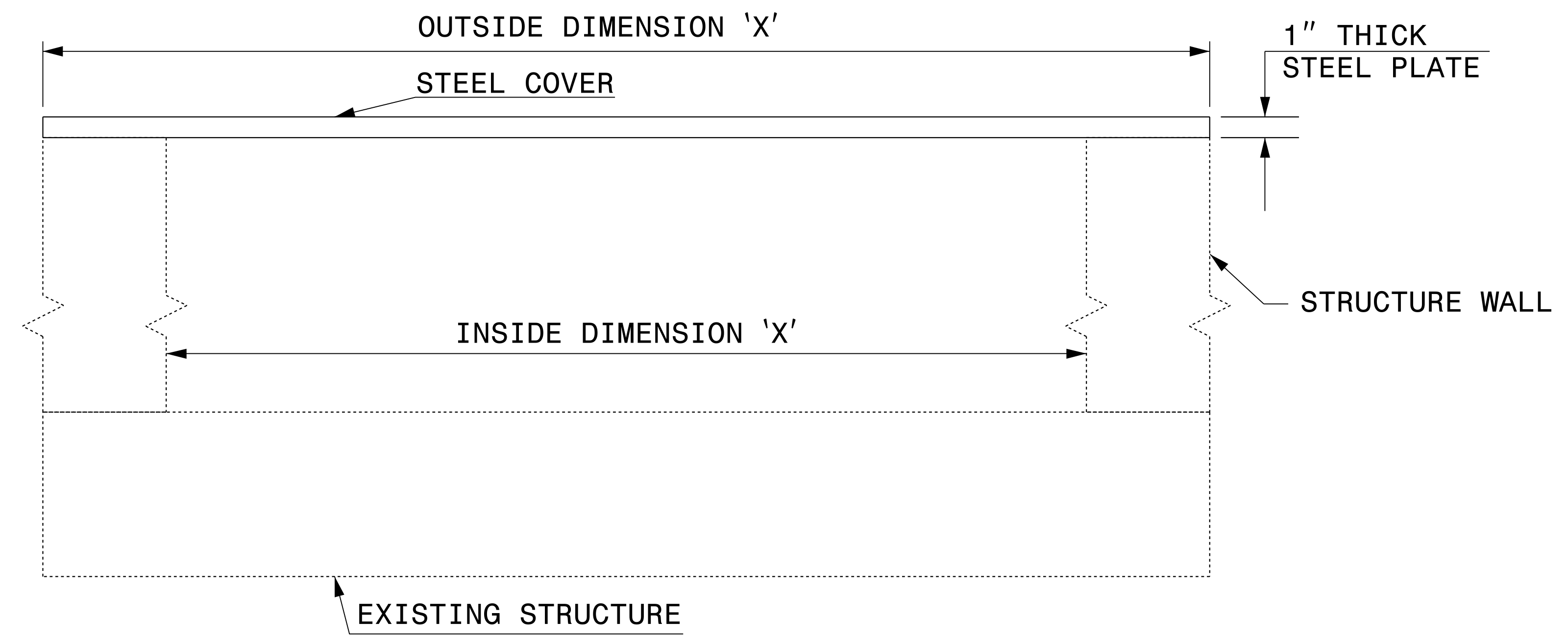
GENERAL NOTES:

- USE GRADE A36 STEEL
- STEEL COVERS ARE FOR TEMPORARY USE DURING PHASE CONSTRUCTION.
- FILL SHALL BE PLACED DIRECTLY OVER THE STEEL PLATES.
- SEE ROADWAY PLANS AND PROVISIONS FOR LOCATIONS
- QUANTITIES TO BE PAID FOR AT THE UNIT PRICE BID PER EACH.

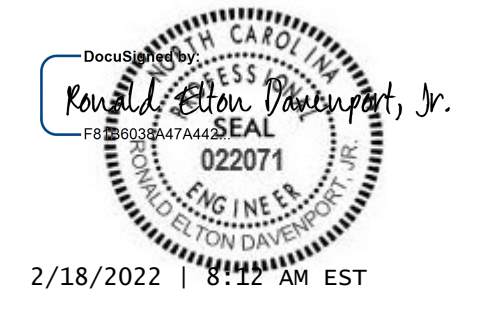


SECTION VIEW OF STEEL TOP PLATE

PLAN VIEWS



ELEVATION VIEWS



2/18/2022 11:12 AM EST

DOCUMENT NOT CONSIDERED FINAL UNLESS ALL SIGNATURES COMPLETED

**CONTRACT STANDARDS AND DEVELOPMENT UNIT**  
 Office 919-707-6950 FAX 919-250-4119

**DETAIL OF TEMPORARY 1" STEEL COVER**

ORIGINAL BY: E.E. WARD DATE: 2-2-98  
 MODIFIED BY: \_\_\_\_\_ DATE: \_\_\_\_\_  
 CHECKED BY: \_\_\_\_\_ DATE: \_\_\_\_\_  
 FILE SPEC.: eric:/usr/details/metric/stand/stlcvr2.dgn

07-DEC-2018 09:57  
 S:\Contracts\Special Details\Jhoverton\Steel Cover.dgn  
 Jhoverton AT USD-292595