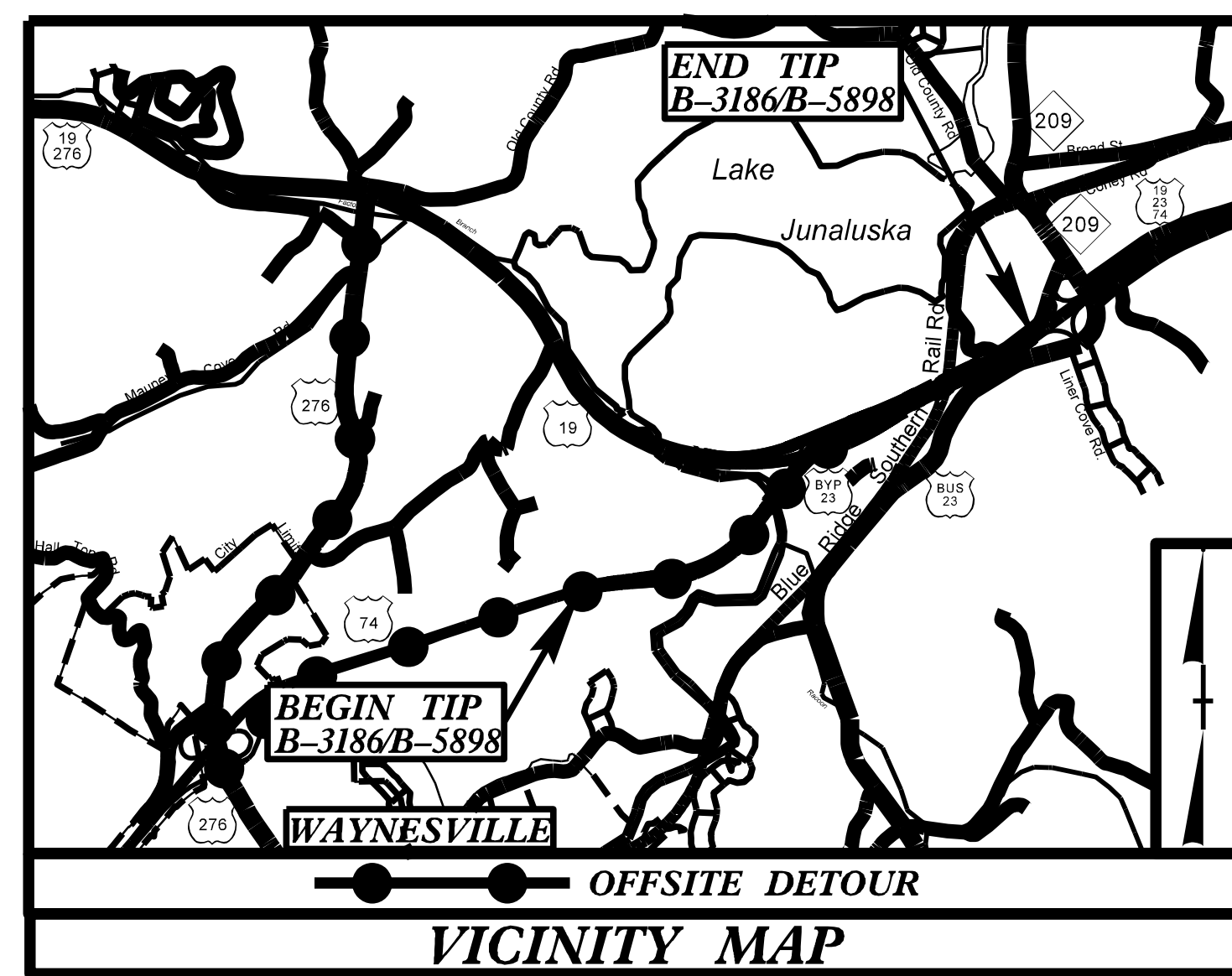


09/08/2011

CONTRACT: C204684 **TIP PROJECT: B-3186 / B-5898**

PLOT DRIVER: NCDOT_pnf_mono_eng_50.plt
 USER: BDEATRICH
 FILE: \PENTABLE: NCDOT_pshpfl UTIL_UC_MODIFIED.tbl
 TIME: 5:40:15 PM
 DATE: 1/26/2022



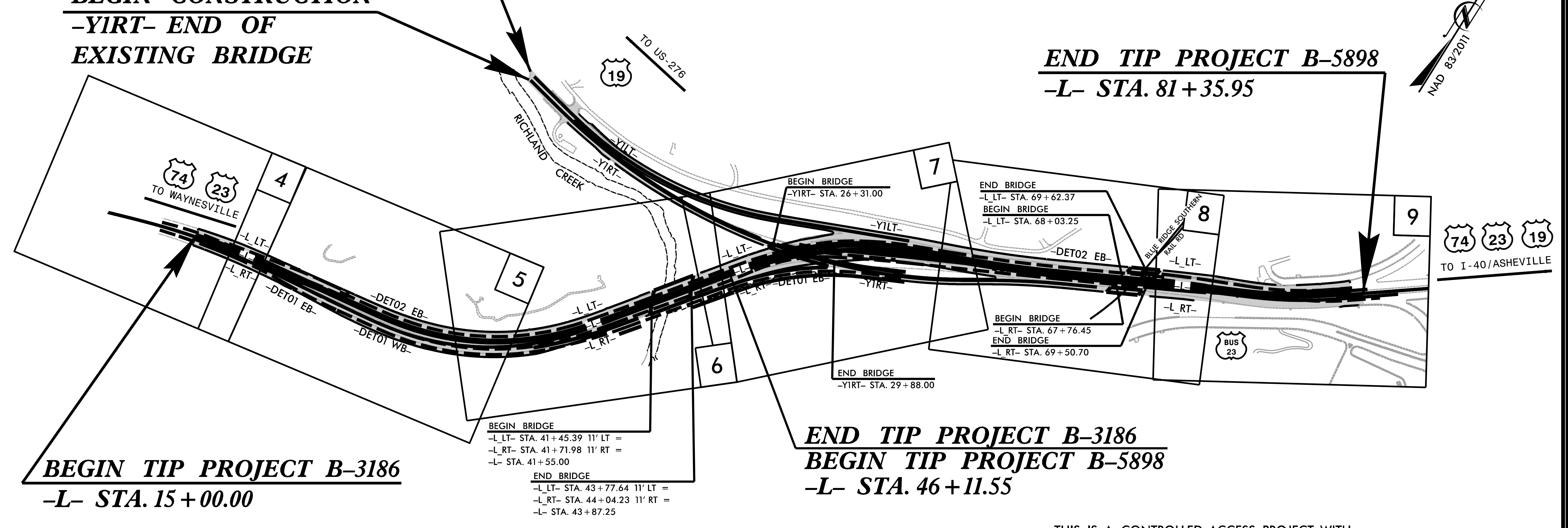
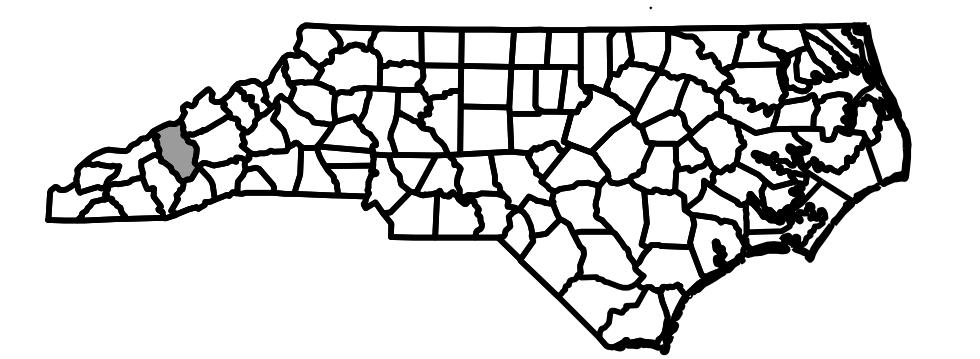
BEGIN CONSTRUCTION
-YIRT- END OF
EXISTING BRIDGE

STATE OF NORTH CAROLINA
 DIVISION OF HIGHWAYS
HAYWOOD COUNTY

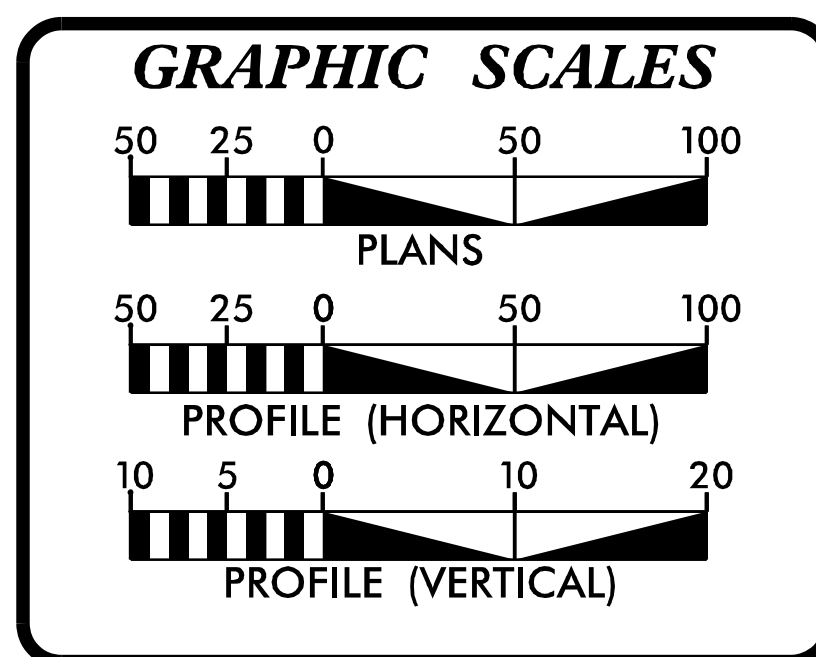
LOCATION: US 23/US 74/US 19 (GREAT SMOKY MOUNTAIN HWY)
FROM WEST OF NC 209(CRABTREE RD.) TO EAST OF RUSS AVE.
TYPE OF WORK: RELOCATION OF POWER AND COMMUNICATION LINES

T.I.P.NO.	SHEET NO.
B-3186 /B-5898	UO-1

NOTE:
 ALL UTILITY WORK SHOWN ON THIS SHEET WILL BE DONE BY OTHERS.
 NO PAYMENT WILL BE MADE TO THE CONTRACTOR FOR UTILITY WORK SHOWN ON THIS SHEET.



THIS IS A CONTROLLED-ACCESS PROJECT WITH ACCESS BEING LIMITED TO INTERCHANGES



INDEX OF SHEETS

SHEET NO.:	DESCRIPTION
UO-1	TITLE SHEET
UO-4 TO UO-9	UBO PLAN SHEETS

UTILITY OWNERS WITH CONFLICTS

(A) POWER - DUKE ENERGY
 (B) COMMUNICATIONS - AT&T


PREPARED IN THE OFFICE OF:

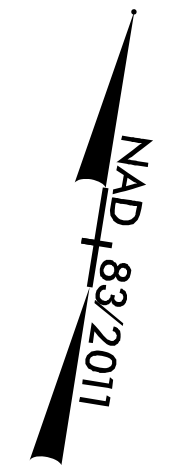
HDR Engineering, Inc. of the Carolinas
 555 Fayetteville St, Suite 900 Raleigh, N.C. 27601
 N.C.B.E.L.S. License Number: F-0116

PHILLIP ROGERS PROJECT MANAGER

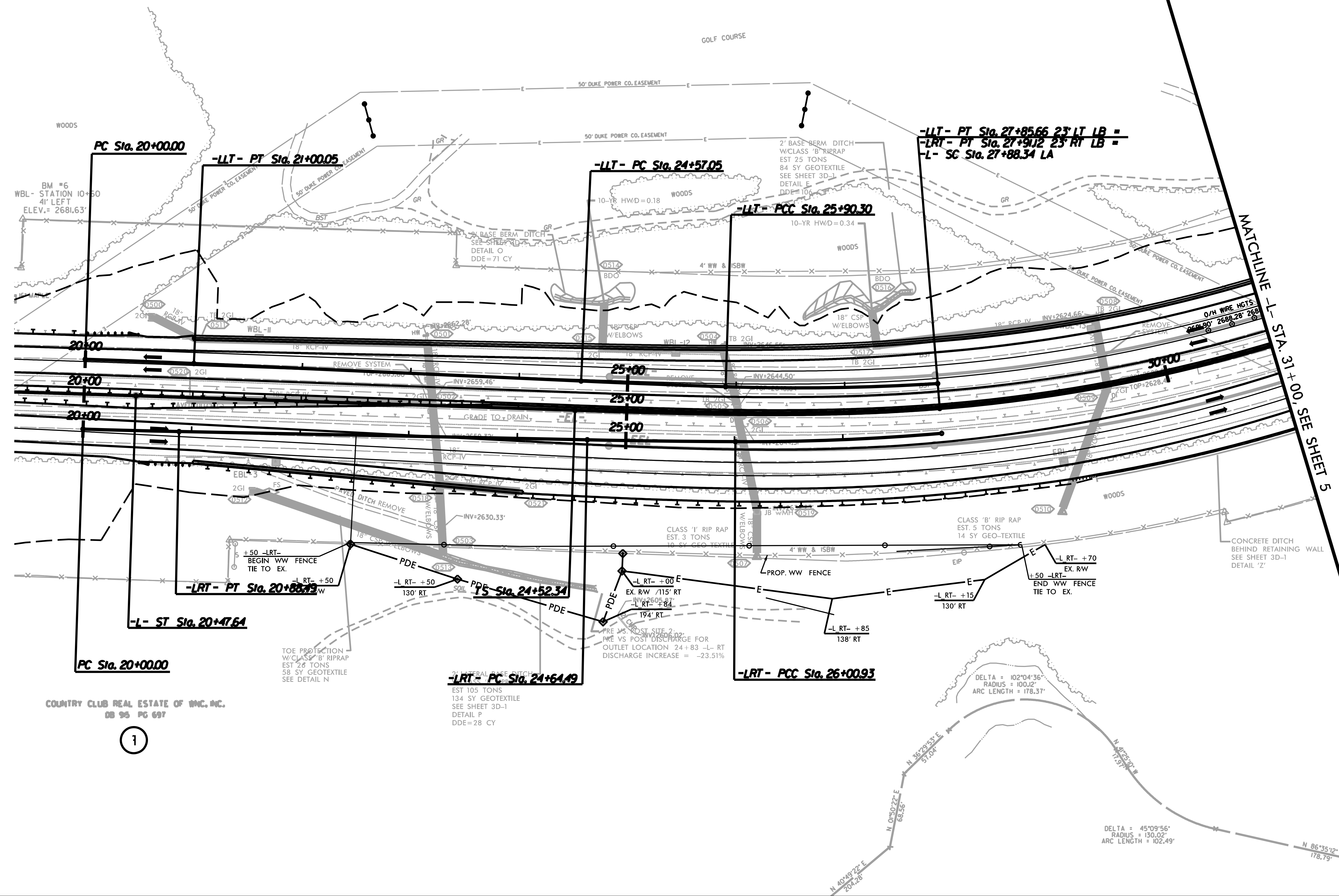
DIVISION OF HIGHWAYS
 UTILITIES UNIT
 558 GILLESPIE STREET
 FAYETTEVILLE, NC 28301

GARRETT HIGDON DISTRICT CONTACT #1
BOB GOLDING DISTRICT CONTACT #2

PROJECT REFERENCE NO.	SHEET NO.
B-3186 /B-5898	UO-4
THIS SHEET CORRESPONDS TO RDY-4	
UTILITIES BY OTHERS	
 HDR Engineering, Inc. of the Carolinas 555 Fayetteville St. Suite 900 Raleigh, N.C. 27601 N.C.B.E.L.S. License Number: F-0116	



LAKE JUMALUSKA
ASSEMBLY, INC
DB 34 PG 476



MATCHLINE - L - STA. 31+00. SEE SHEET 5

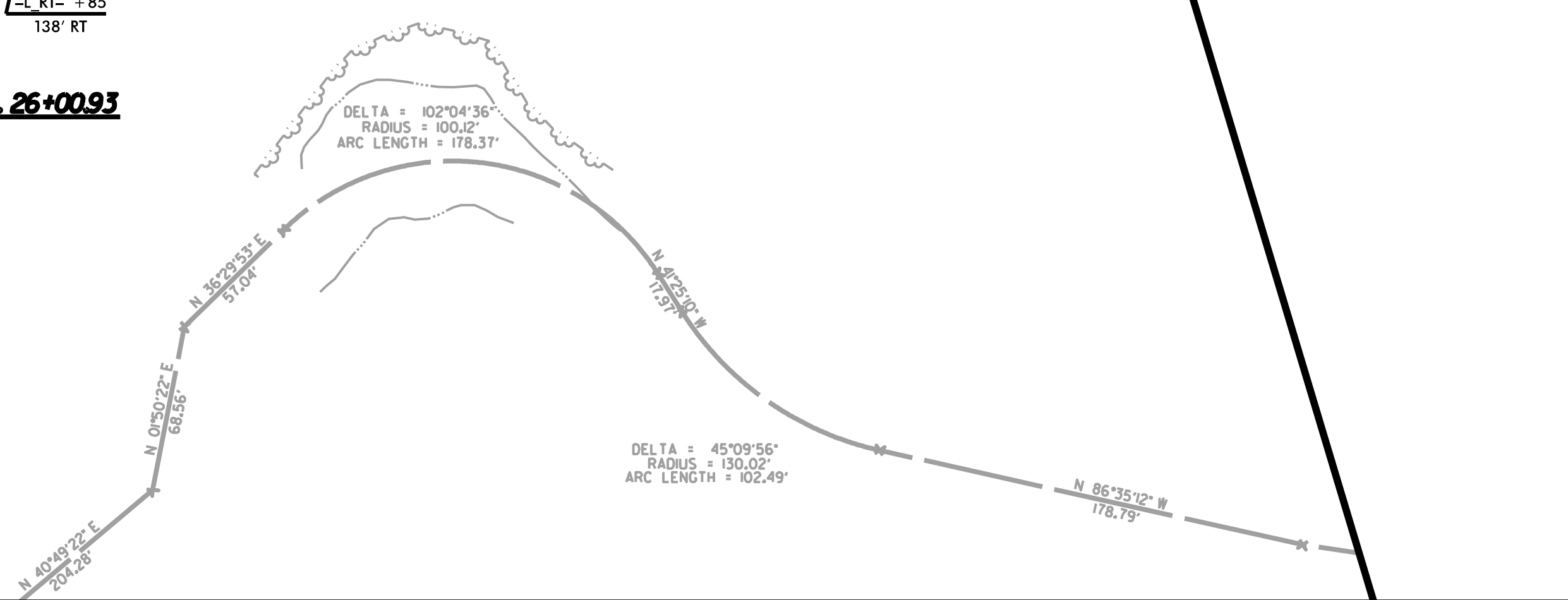
COUNTRY CLUB REAL ESTATE OF WNC, INC.
DB 96 PG 697

1

REVISIONS

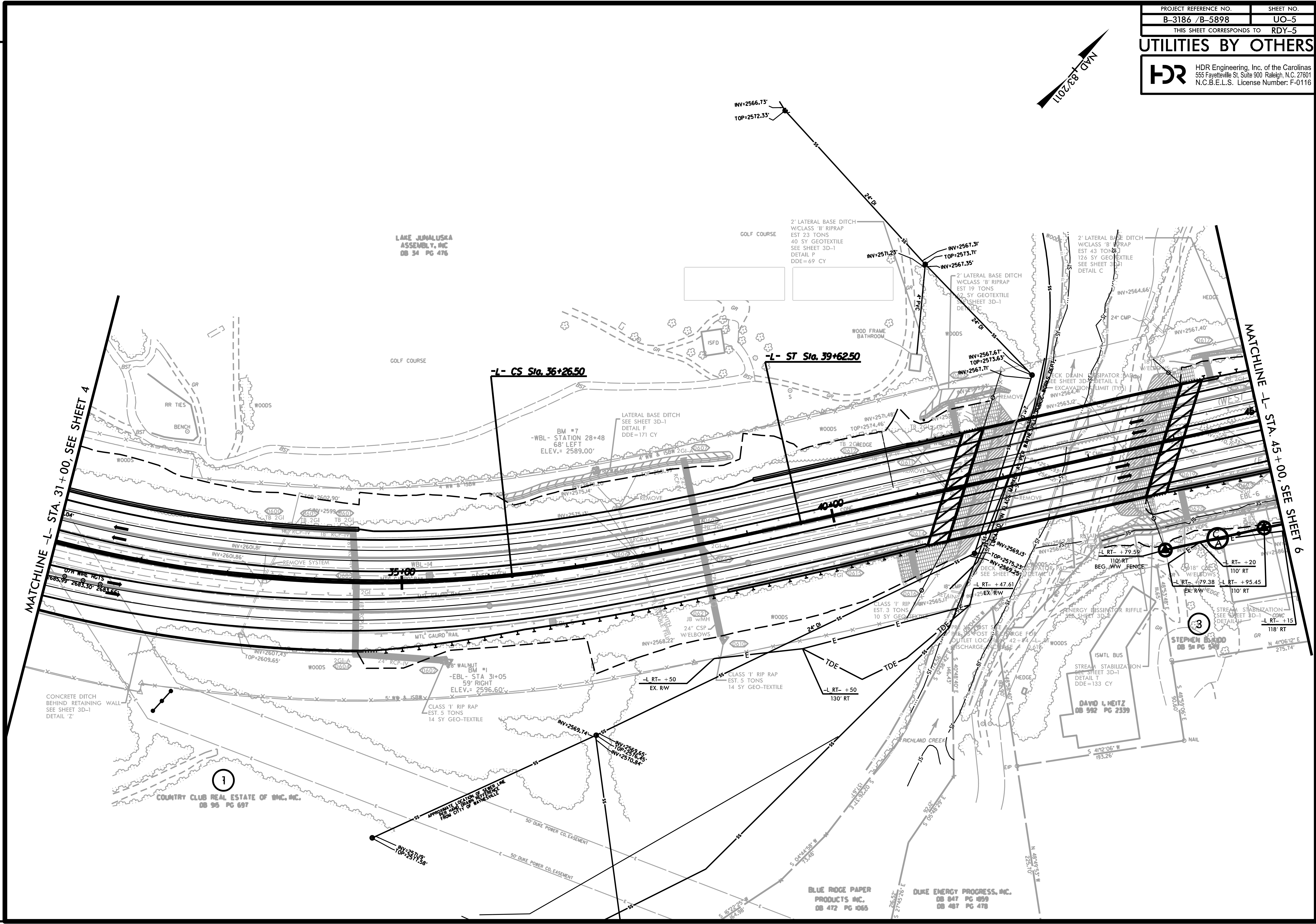
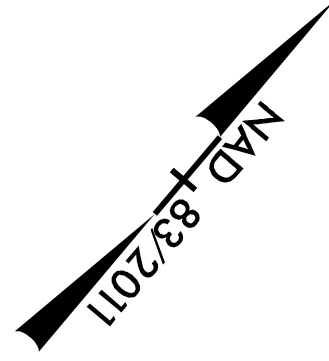
PENTABLE: NCDOT_pshpfl.LTL_UC_MODIFIED.tbl
TIME: 9:40:59 AM

PLOT DRIVER: NCDOT_pdf_mono_eng_50.plt
USER: BEATRICH DATE: 1/11/2022
FILE:



DELTA = 45°09'56"
RADIUS = 130.02'
ARC LENGTH = 102.49'

DELTA = 102°04'36"
RADIUS = 100.12'
ARC LENGTH = 178.37'



MATCHLINE -L- STA. 31+00, SEE SHEET 4

MATCHLINE -L- STA. 45+00, SEE SHEET 6

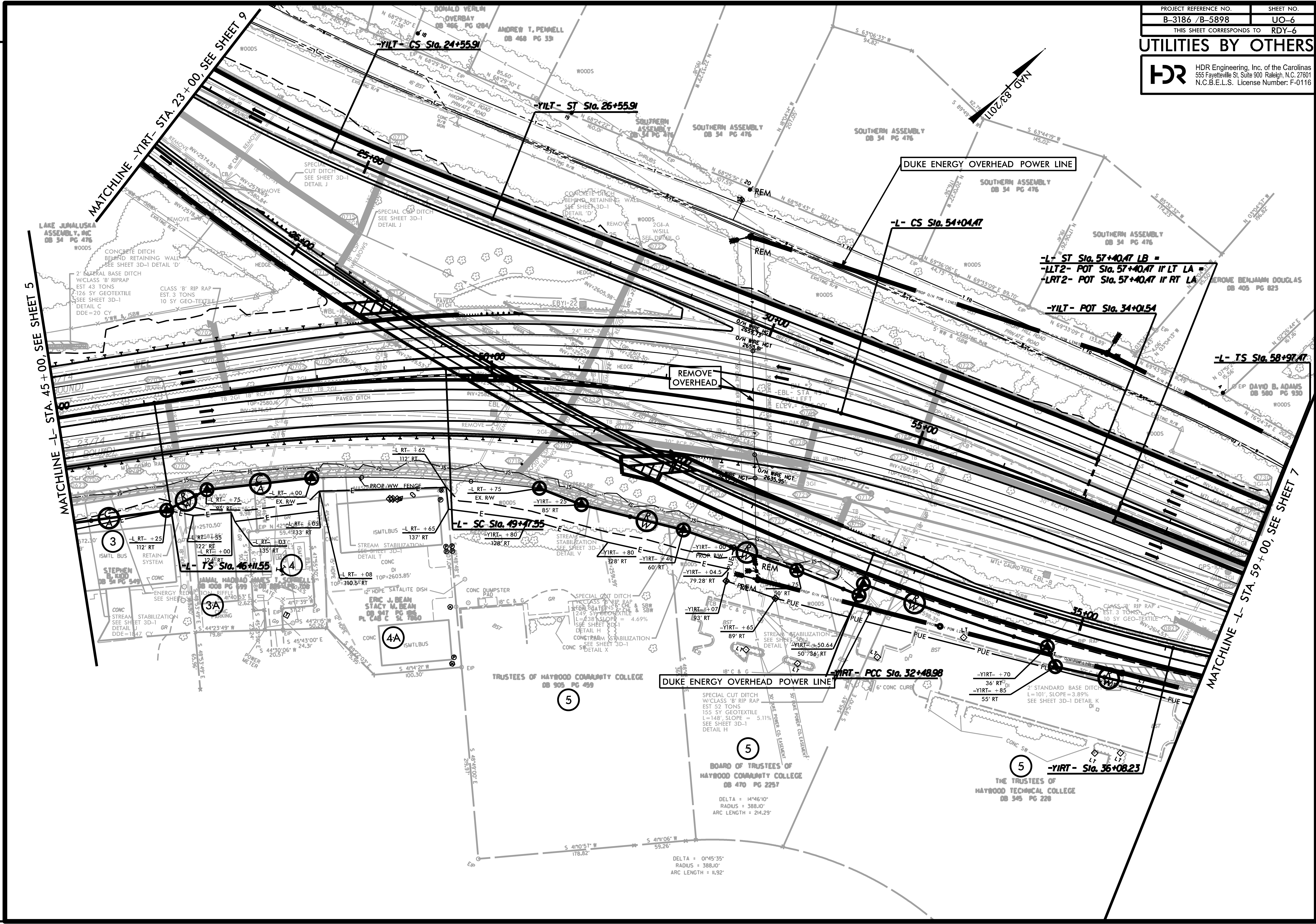
PENTABLE: NCDOT_psdppf_lutl_uc_modif_ied.tbl
 USER: BDEATRICH
 DATE: 1/11/2022
 TIME: 9:41:02 AM

PLOT DRIVER: NCDOT_pdf_mono_eng_50.plt
 USER: BDEATRICH
 DATE: 1/11/2022
 TIME: 9:41:02 AM

REVISIONS

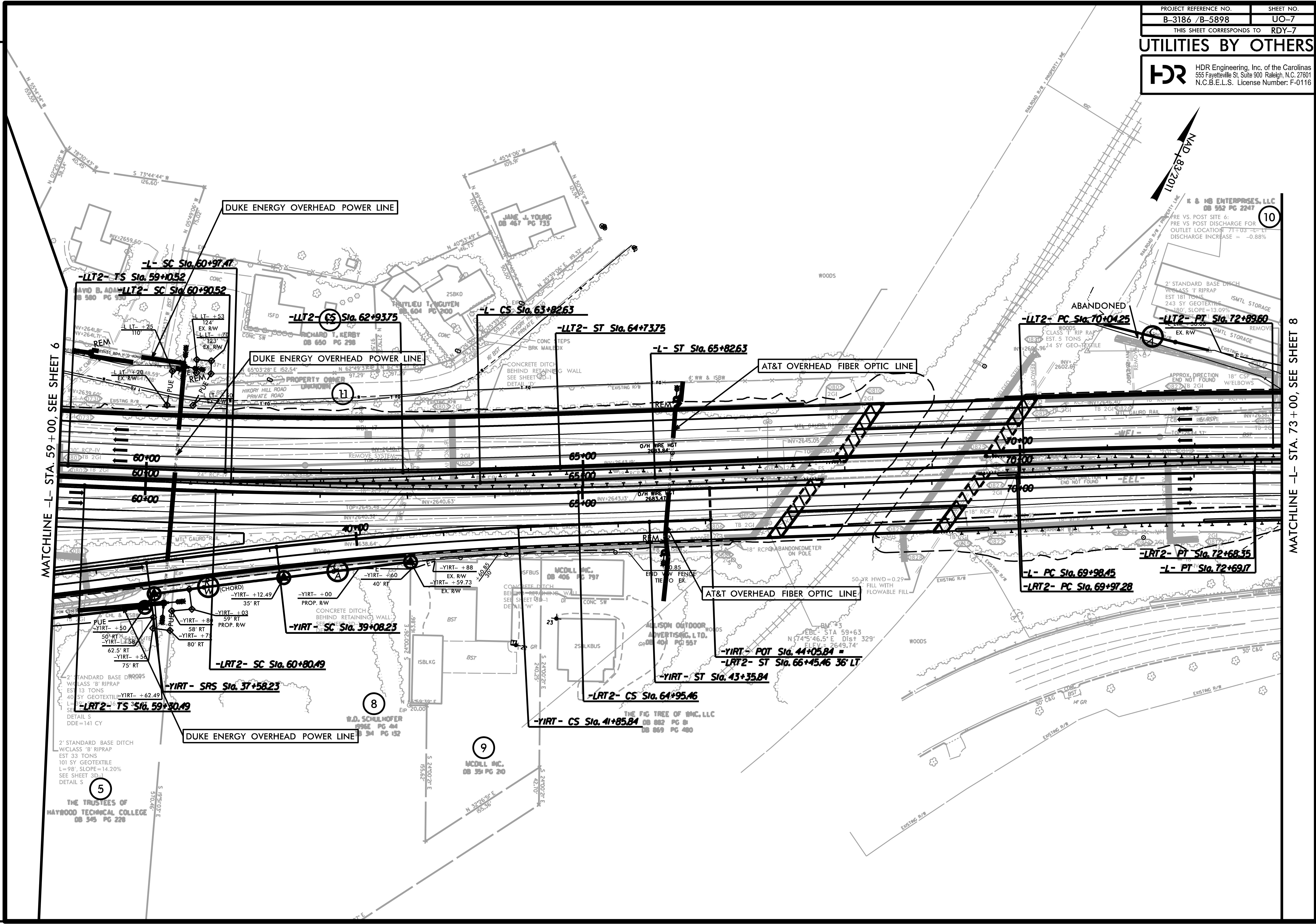
1

3



PLOT DRIVER: NCDOT...
 USER: BBEATRICH
 DATE: 1/11/2022
 TIME: 9:41:07 AM

REVISIONS



MATCHLINE -L- STA. 59+00, SEE SHEET 6

MATCHLINE -L- STA. 73+00, SEE SHEET 8

PLOT DRIVER: NCDOT...
USER: BEATRICH
DATE: 1/11/2022

REVISIONS

5
2' STANDARD BASE DITCH
W/CLASS 'B' RIPRAP
EST 33 TONS
101 SY GEOTEXTILE
L=98', SLOPE=14.20%
SEE SHEET 3D
DETAIL S

THE TRUSTEES OF
HAYWOOD TECHNICAL COLLEGE
DB 345 PG 228

6
2' STANDARD BASE DITCH
W/CLASS 'B' RIPRAP
EST 181 TONS
243 SY GEOTEXTILE
L=100', SLOPE=13.09%
SEE SHEET 3D
DETAIL S

K & H8 ENTERPRISES, LLC
DB 952 PG 2247

PRE VS POST SITE 6:
PRE VS POST DISCHARGE FOR
OUTLET LOCATION 71+03 -L-
DISCHARGE INCREASE = -0.88%

7
2' STANDARD BASE DITCH
W/CLASS 'B' RIPRAP
EST 181 TONS
243 SY GEOTEXTILE
L=100', SLOPE=13.09%
SEE SHEET 3D
DETAIL S

ABANDONED

2' STANDARD BASE DITCH
W/CLASS 'B' RIPRAP
EST 181 TONS
243 SY GEOTEXTILE
L=100', SLOPE=13.09%
SEE SHEET 3D
DETAIL S

APPROX. DIRECTION
END NOT FOUND

18" CSP
WELBOWS

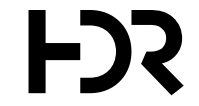
8
W.D. SCHULHOFER
DB 394 PG 132

9
MCOLL INC.
DB 393 PG 200

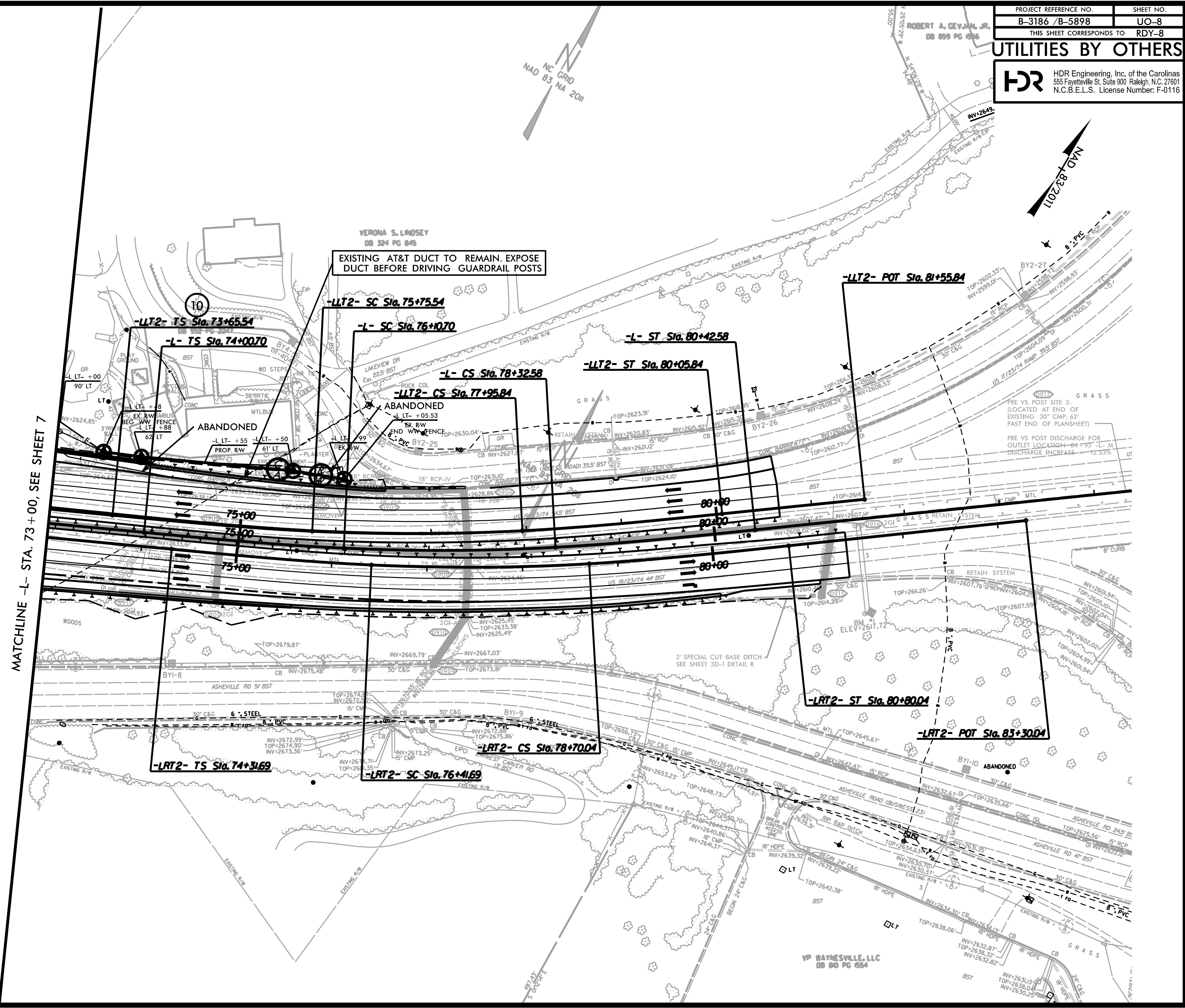
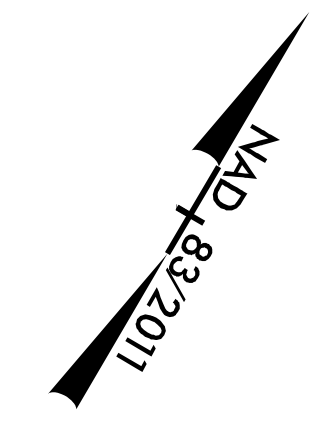
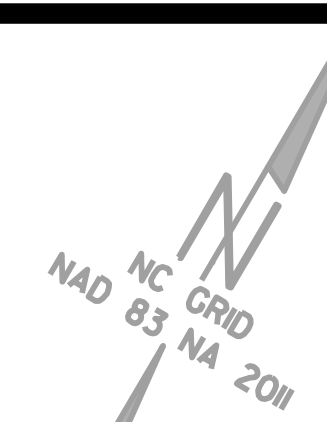
10
K & H8 ENTERPRISES, LLC
DB 952 PG 2247

PROJECT REFERENCE NO.	SHEET NO.
B-3186 / B-5898	UO-8
THIS SHEET CORRESPONDS TO RDY-8	

UTILITIES BY OTHERS



HDR Engineering, Inc. of the Carolinas
555 Fayetteville St. Suite 900 Raleigh, N.C. 27601
N.C.B.E.L.S. License Number: F-0116



MATCHLINE -L- STA. 73+00, SEE SHEET 7

REVISIONS

PENTABLE: NCDOT_pshpfl.LTL_UC_MODIFIED.tbl
USER: BDEATRICH
DATE: 1/11/2022
TIME: 9:41:25 AM

PLOT DRIVER: NCDOT_pdf_mono_eng_50.plt
USER: BDEATRICH
DATE: 1/11/2022
TIME: 9:41:25 AM

NC GRID
NAD 83 NA 2011

UTILITY OWNERS

DUKE ENERGY CAROLINAS
217 CRAIG MANOR ROAD
LANCASTER, S.C. 29720

AT&T
P.O. BOX 53704
ATLANTA, GA. 30353

TOWN OF WAYNESVILLE
16 SOUTH MAIN STREET
P.O. BOX 100
WAYNESVILLE, N.C. 28786

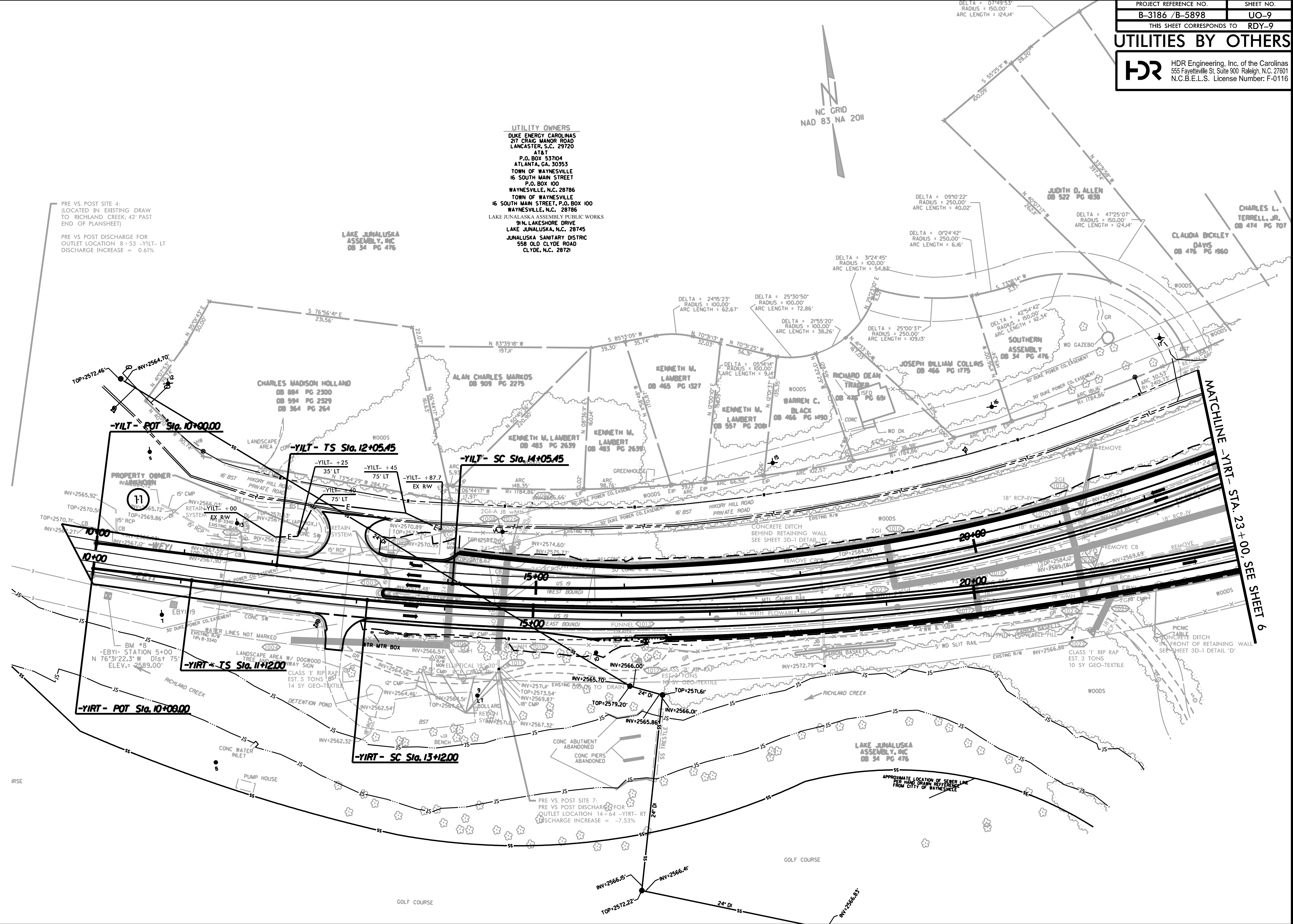
TOWN OF WAYNESVILLE
16 SOUTH MAIN STREET, P.O. BOX 100
WAYNESVILLE, N.C. 28786

LAKE JUNALUSKA ASSEMBLY PUBLIC WORKS
511 LAKESHORE DRIVE
LAKE JUNALUSKA, N.C. 28745

JUNALUSKA SANITARY DISTRICT
558 OLD CLYDE ROAD
CLYDE, N.C. 28721

PRE VS. POST SITE 4:
(LOCATED IN EXISTING DRAW
TO RICHLAND CREEK; 42' PAST
END OF PLANSHEET)

PRE VS POST DISCHARGE FOR
OUTLET LOCATION 8+53 -YILT- LT
DISCHARGE INCREASE = 0.61%



REVISIONS

PENTABLE: NCDOT_dspdpfl_ltl_uc_modif.ied.tbl
TIME: 9:41:27 AM

PLOT DRIVER: NCDOT_pdf_mono_eng_50.plt
USER: BDEATRICH
DATE: 1/11/2022
FILE:

MACHINE
-YIRT- STA. 23+00, SEE SHEET 6

PRE VS POST SITE 7:
PRE VS POST DISCHARGE FOR
OUTLET LOCATION 14+64 -YIRT- RT
DISCHARGE INCREASE = -7.53%

APPROXIMATE LOCATION OF SEWER LINE
PER HAND DRAWN REFERENCE