

PROJECT REFERENCE NO.	SHEET NO.
B-3186 / B-5898	EC-10Const. 10
RW SHEET NO.	
ROADWAY DESIGN ENGINEER	HYDRAULICS ENGINEER

HDR HDR Engineering, Inc. of the Carolinas
 555 Fayetteville St. Suite 900 Raleigh, N.C. 27601
 N.C.B.E.L.S. License Number: F-0116

NOTE:
 PLACE TEMPORARY ROCK SEDIMENT DAMS TYPE - B AND TEMPORARY ROCK SILT CHECKS TYPE - A AT DRAINAGE OUTLETS.

CLEARING AND GRUBBING EROSION CONTROL FOR CONSTRUCTION SHEET 10

UTILIZE FABRIC INSERT INLET PROTECTION (HIGH FLOW) FOR DRAINAGE INLETS CLOSE TO TRAFFIC AS NEEDED

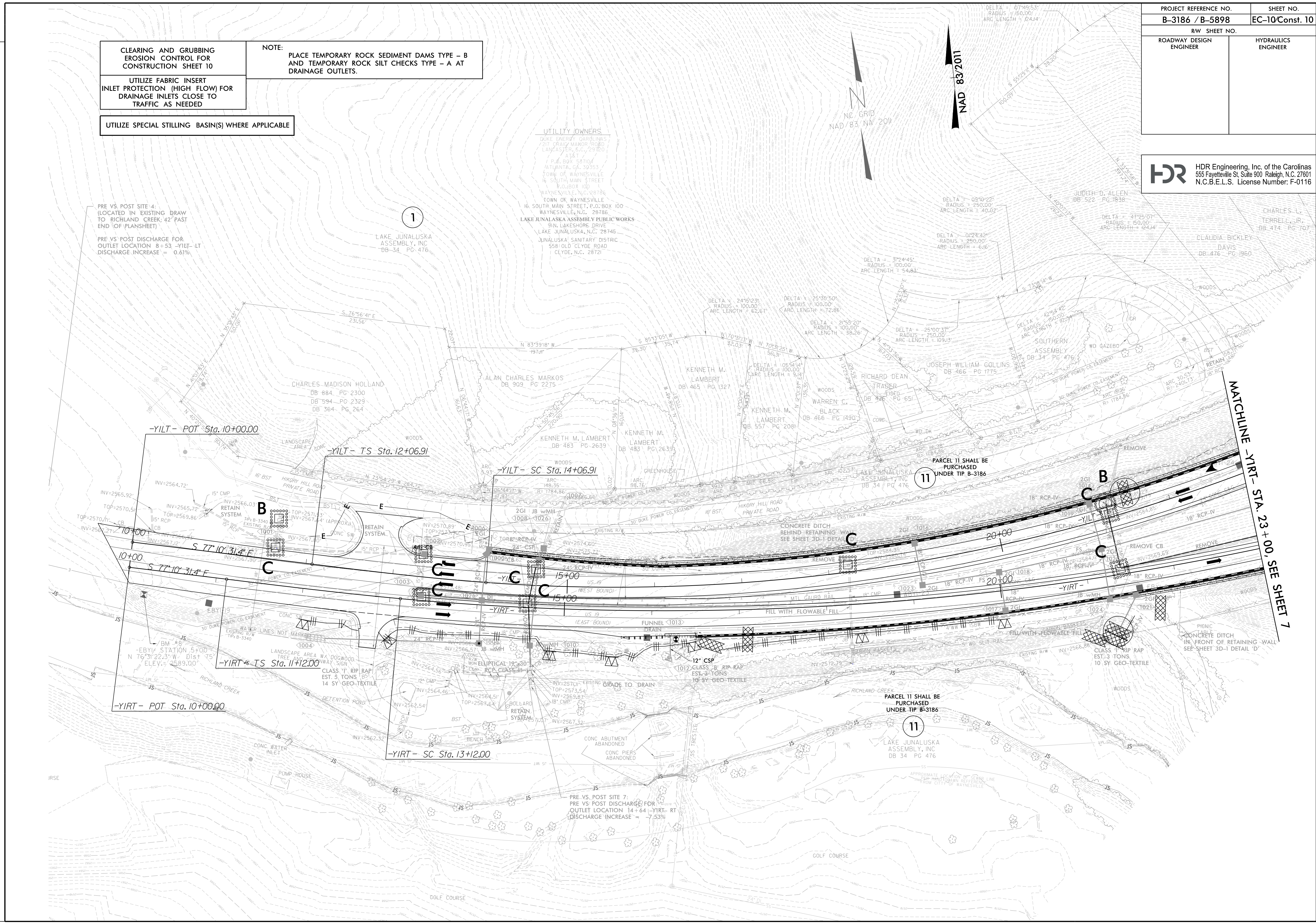
UTILIZE SPECIAL STILLING BASIN(S) WHERE APPLICABLE

REVISIONS

RIGHT-OF-WAY REVISION 11-9-2021 : ADDED PARCEL 11 FOR LAKE JUNALUSKA ASSEMBLY
 ADDED NOTE FOR TIP ACQUISITION

PLOT DRIVER: NCDOT_pdf_color_eng_100.plt
 USER: MWELVERT
 FILE: NCDOT\NCDOT\B3186_T02.cad

PENTABLE: NCDOT_EC.C&G_BW.tbl
 TIME: 10:08:40 AM
 DATE: 11/30/2021
 DATE: 11/30/2021
 DATE: 11/30/2021



-DETOI_EB-		-DETOI_WB-	
PI Sta 15+18.36	PI Sta 18+51.60	PI Sta 13+60.49	PI Sta 16+83.35
$\Delta = 3^{\circ}09'23.8''$ (RT)	$\Delta = 8^{\circ}37'37.9''$ (RT)	$\Delta = 1^{\circ}59'19.4''$ (RT)	$\Delta = 15^{\circ}33'49.8''$ (RT)
D = 1'30"28.0"	D = 2'19"10.8"	D = 1'38"38.6"	D = 2'59"03.0"
L = 209.35'	L = 371.92'	L = 120.96'	L = 521.55'
T = 104.70'	T = 186.31'	T = 60.49'	T = 262.39'
R = 3,800.00'	R = 2,470.00'	R = 3,485.00'	R = 1,920.00'
SE = EX.	SE = EX.	SE = EX.	SE = 0.06
			DS = 55mph

DETOUR EROSION CONTROL

UTILIZE FABRIC INSERT INLET PROTECTION (HIGH FLOW) FOR DRAINAGE INLETS CLOSE TO TRAFFIC AS NEEDED

PROJECT REFERENCE NO.	SHEET NO.
B-3186 / B-5898	EC-11/Const.2B-2
RW SHEET NO.	
ROADWAY DESIGN ENGINEER	HYDRAULICS ENGINEER

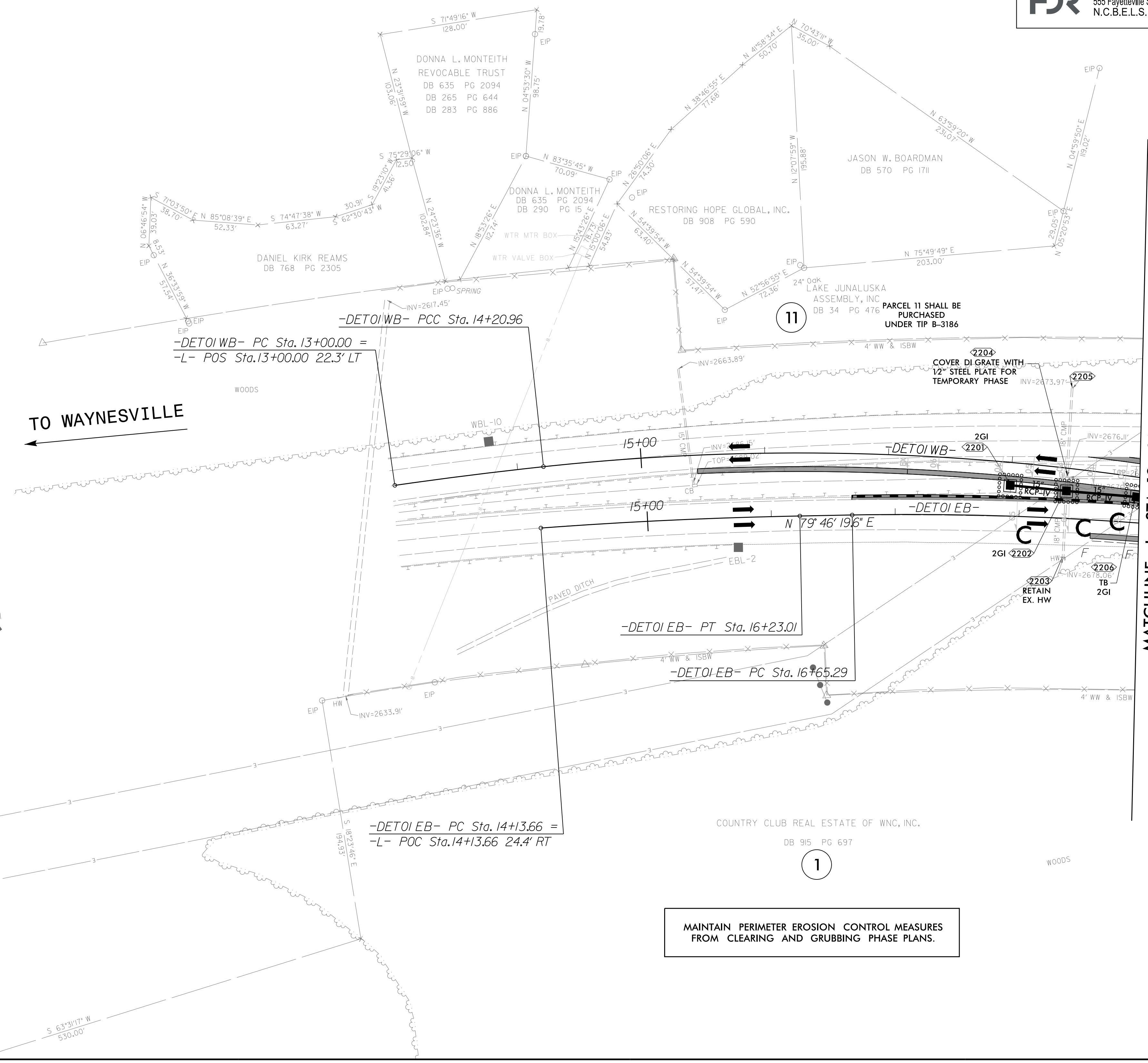
HDR HDR Engineering, Inc. of the Carolinas
 555 Fayetteville St. Suite 900 Raleigh, N.C. 27601
 N.C.B.E.L.S. License Number: F-0116



PLOT DRIVER: NCDOT_color_eng_100.plt
 USER: WYELVERT
 FILE: NCDOT\NCDOT-B3186_T02.c. \6.0.CAD.BTM\6.2.Work.In.Prog\ress\B-3186-B-5898\Erosion Control\B3186-HYD-EC.PSH_INTERMEDIATE.dgn
 PENTABLE: NCDOT_EC_FINAL_BW.tbl
 DATE: 11/30/2021
 TIME: 10:31:36 AM
 REVISIONS

BM #5
 -WBL- STA 5+00
 S 76°10'26.7" W Dist 626'
 ELEV. = 2709.07'

TO WAYNESVILLE



MAINTAIN PERIMETER EROSION CONTROL MEASURES FROM CLEARING AND GRUBBING PHASE PLANS.

MATCHLINE -L- STA. 19+00, SEE SHEET 2B-3

DETOUR EROSION CONTROL

MAINTAIN TEMPORARY SILT FENCE FOR ALL PHASES OF CONSTRUCTION

UTILIZE FABRIC INSERT INLET PROTECTION (HIGH FLOW) FOR DRAINAGE INLETS CLOSE TO TRAFFIC AS NEEDED

UTILIZE SPECIAL STILLING BASIN(S) WHERE APPLICABLE

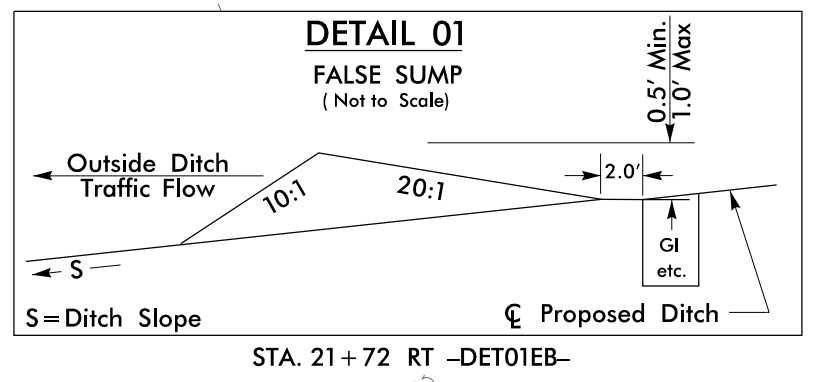
PROJECT REFERENCE NO. B-3186 / B-5898	SHEET NO. EC-12/Const.2B-3
RW SHEET NO.	
ROADWAY DESIGN ENGINEER	HYDRAULICS ENGINEER

HDR HDR Engineering, Inc. of the Carolinas
 555 Fayetteville St. Suite 900 Raleigh, N.C. 27601
 N.C.B.E.L.S. License Number: F-0116

LAKE JUNALUSKA ASSEMBLY, INC
 DB 34 PG 476

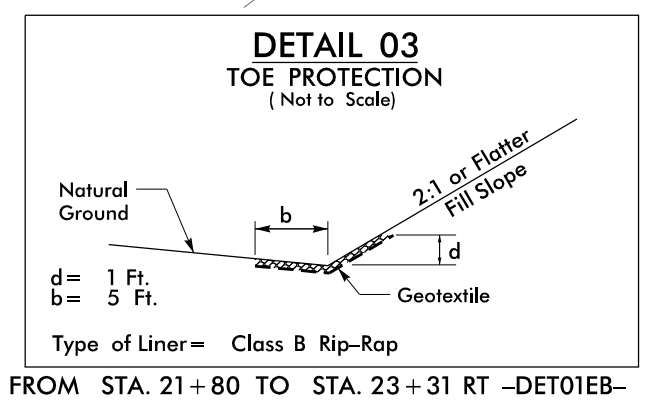
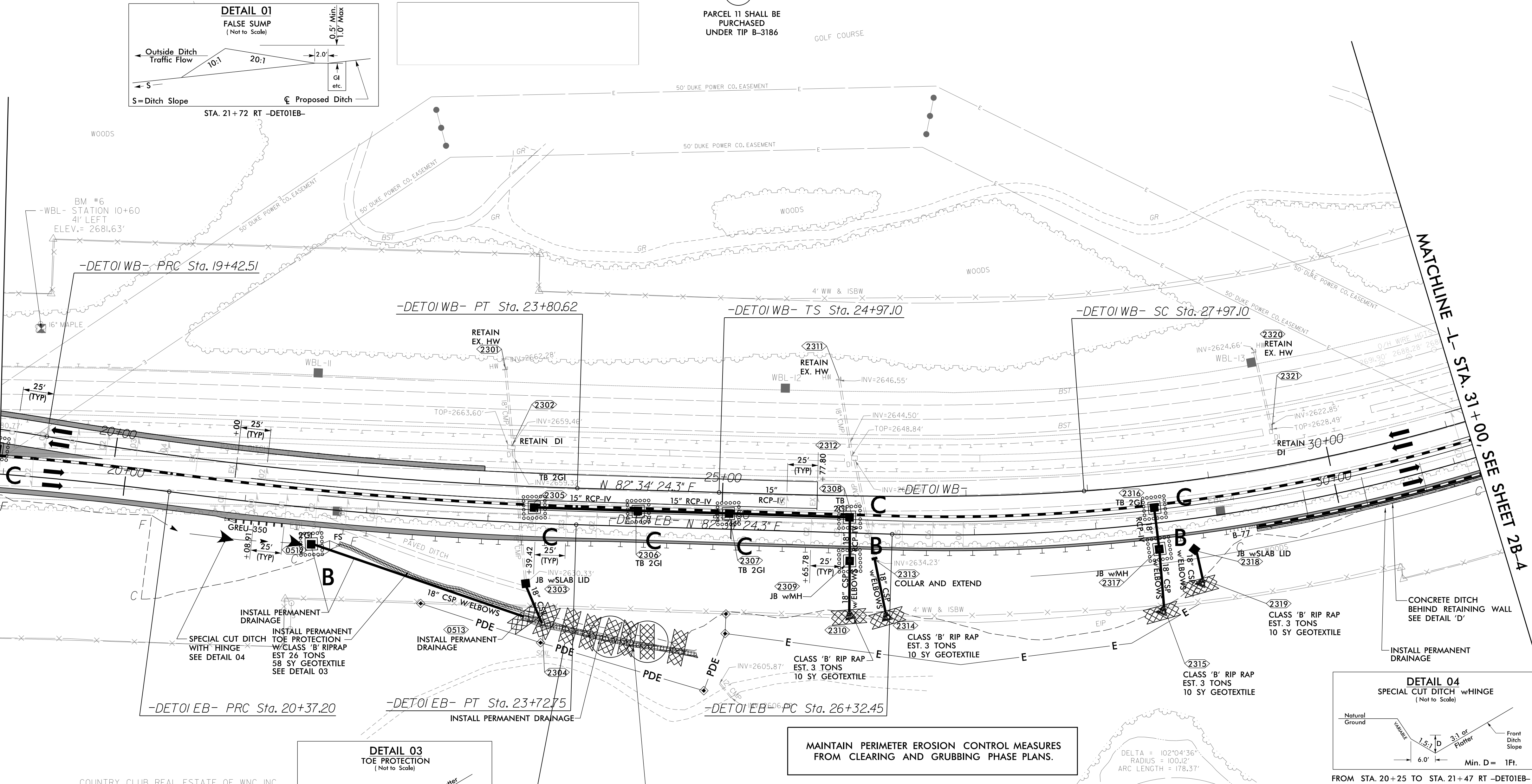
11
 PARCEL 11 SHALL BE PURCHASED UNDER TIP B-3186

NAD 83/2011



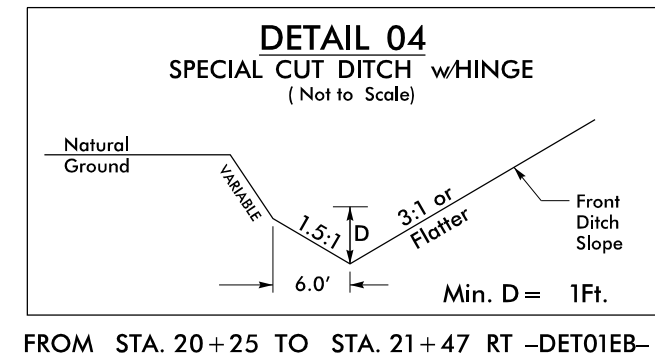
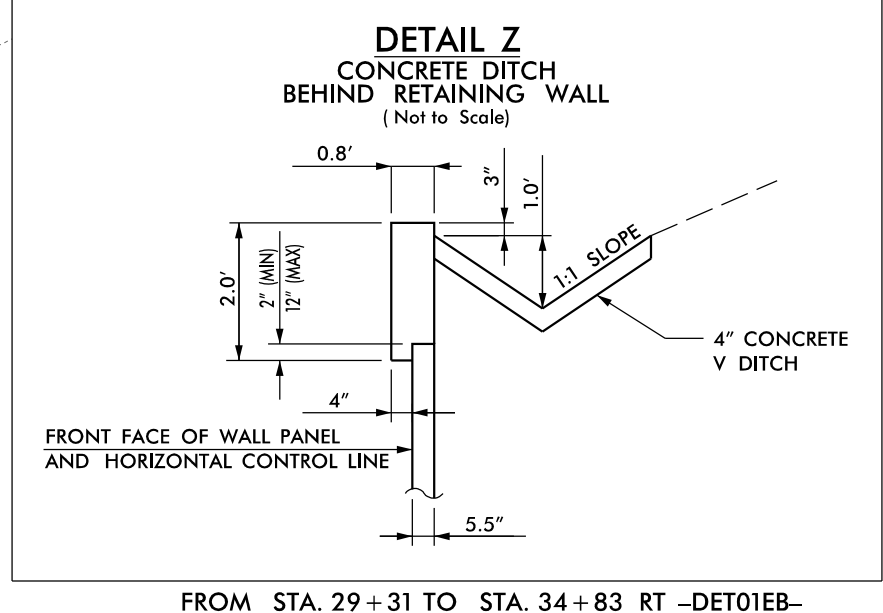
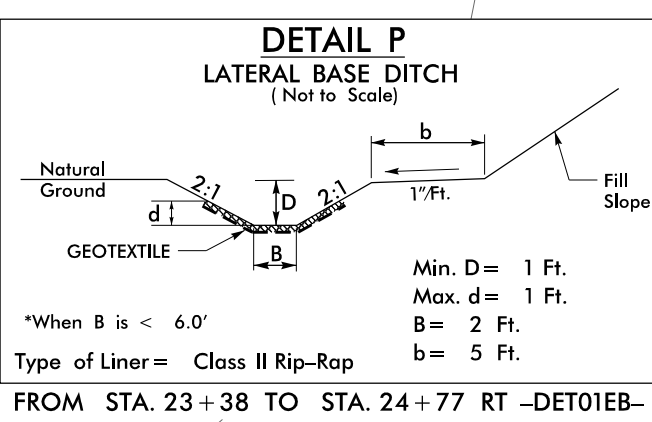
MATCHLINE -L- STA. 19+00, SEE SHEET 2B-2

MATCHLINE -T- STA. 31+00, SEE SHEET 2B-A



MAINTAIN ROCK CHECKS TYPE A IN DITCH LINE AFTER INSTALLING PERMANENT RIP RAP LINER

MAINTAIN PERIMETER EROSION CONTROL MEASURES FROM CLEARING AND GRUBBING PHASE PLANS.



REVISIONS
 PLOT DRIVER: NCDOT...
 USER: MYELVERT
 DATE: 11/30/2021
 TIME: 10:46:07 AM
 FILE: NCDOT\NCDOT\B3186_102_c_v6.0_CAD_BITMAP6.2_Work_In_Progress\B-3186-B-5898\Erosion Control\B3186-B-5898-HYD-EC_PSH_INTERMEDIATE.dgn

PROJECT REFERENCE NO.	SHEET NO.
B-3186 / B-5898	EC-13Const.2B-4
RW SHEET NO.	
ROADWAY DESIGN ENGINEER	HYDRAULICS ENGINEER

HDR HDR Engineering, Inc. of the Carolinas
555 Fayetteville St. Suite 900 Raleigh, N.C. 27601
N.C.B.E.L.S. License Number: F-0116

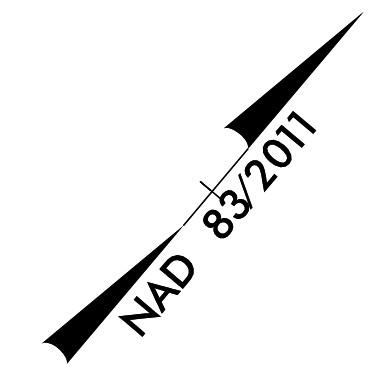
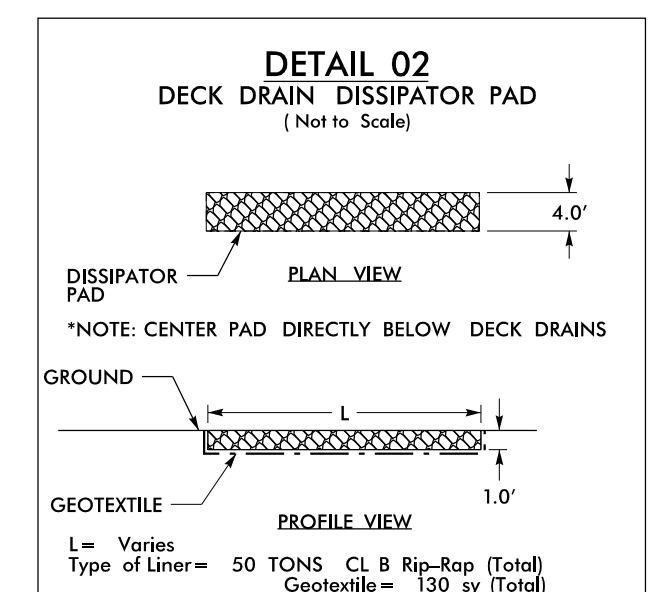
DETOUR EROSION CONTROL

Place Matting for Erosion Control on Slope as Work Allows.
Sta. 36+50 to Sta. 39+50 -DETO1_EB- RT

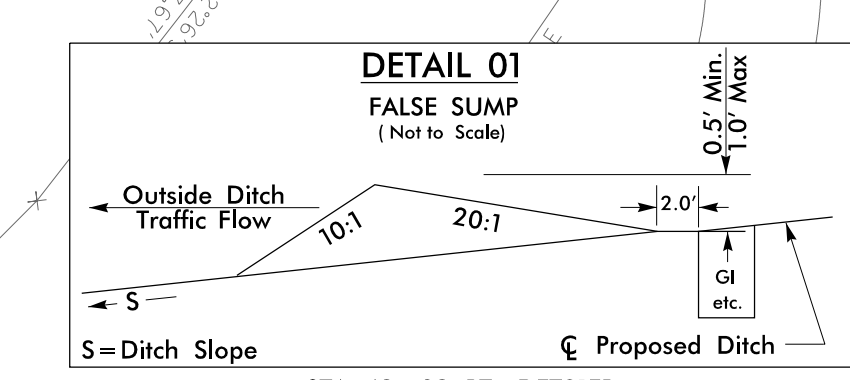
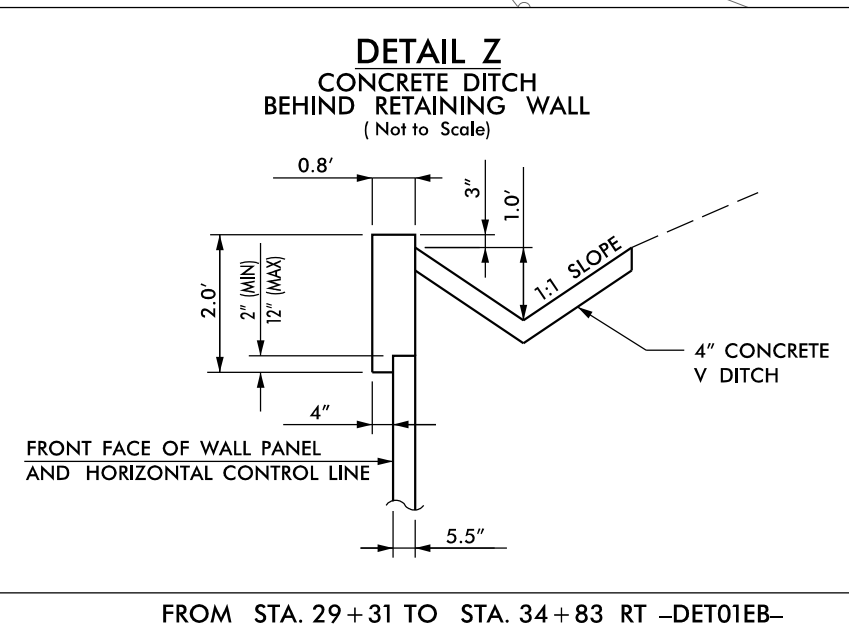
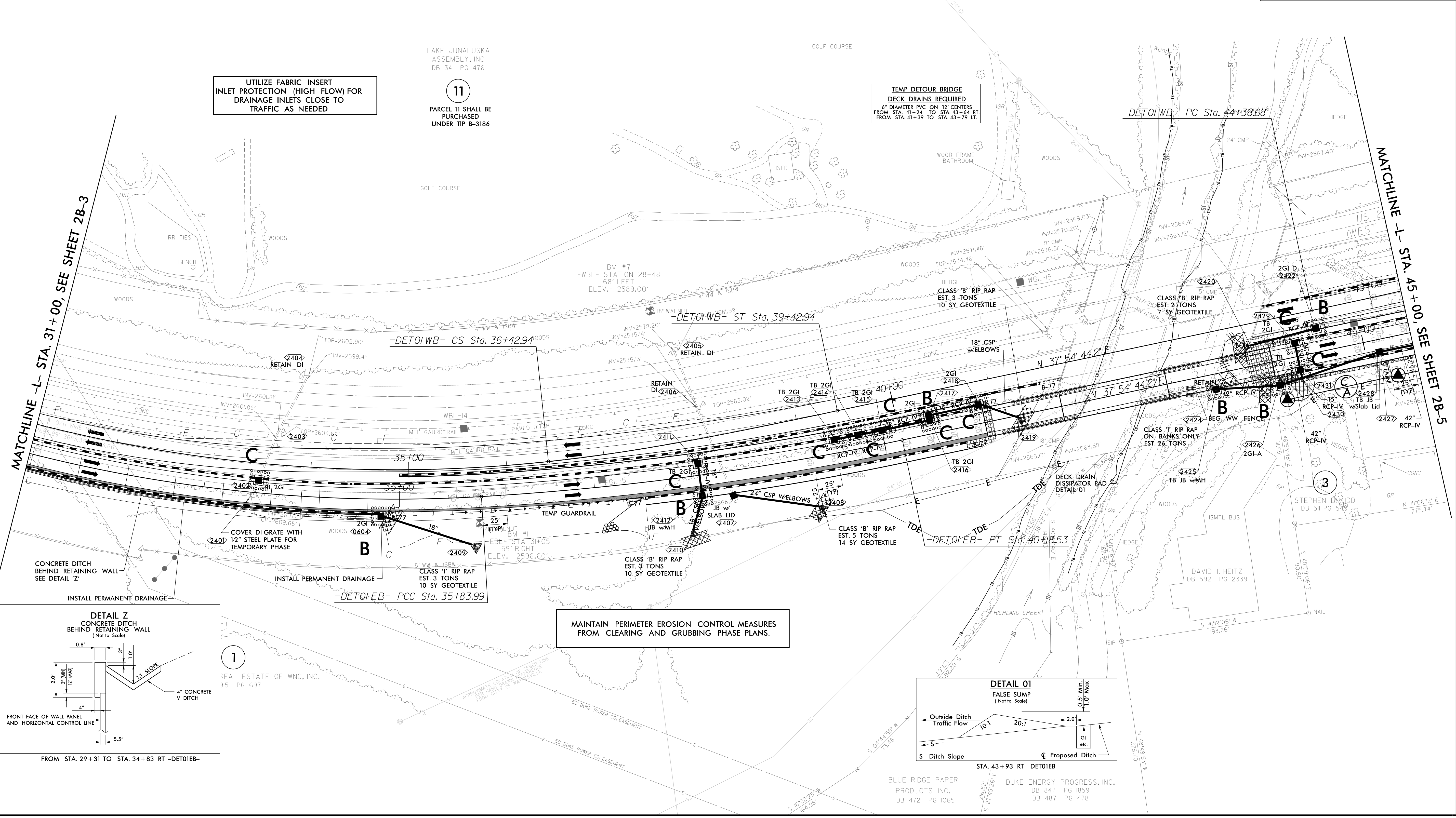
UTILIZE PUMP AROUND OPERATION AS NEEDED TO MANAGE JURISDICTIONAL FLOW DURING CONSTRUCTION OF DETOUR DRAINAGE SYSTEM.

UTILIZE SPECIAL STILLING BASIN(S) WHERE APPLICABLE

UTILIZE FABRIC INSERT INLET PROTECTION (HIGH FLOW) FOR DRAINAGE INLETS CLOSE TO TRAFFIC AS NEEDED



FROM STA. 41+24 TO STA. 41+99 RT -DETO1EB-
FROM STA. 42+65 TO STA. 43+07 RT -DETO1EB-
FROM STA. 43+37 TO STA. 43+67 RT -DETO1EB-
FROM STA. 41+36 TO STA. 42+14 LT -DETO1EB-
FROM STA. 42+91 TO STA. 43+34 LT -DETO1EB-
FROM STA. 43+52 TO STA. 43+82 LT -DETO1EB-



PLOT DRIVER: NCDOT_pdf_color_eng_100.pht
 USER: WYELVERT
 FILE: NCDOT\NCDOT-B3186_T02.c. \6.0.CAD.BTM\6.2.Work.In.Progress\B-3186-B-5898\Erosion Control\B3186-HYD-EC.PSH_INTERMEDIATE.dgn
 DATE: 11/30/2021
 TIME: 10:47:55 AM
 REVISIONS

PENTABLE: NCDOT_EC_FINAL_BW.tbl
 DATE: 11/30/2021
 TIME: 10:47:55 AM

MATCHLINE -L- STA. 31+00, SEE SHEET 2B-3

MATCHLINE -L- STA. 45+00, SEE SHEET 2B-5

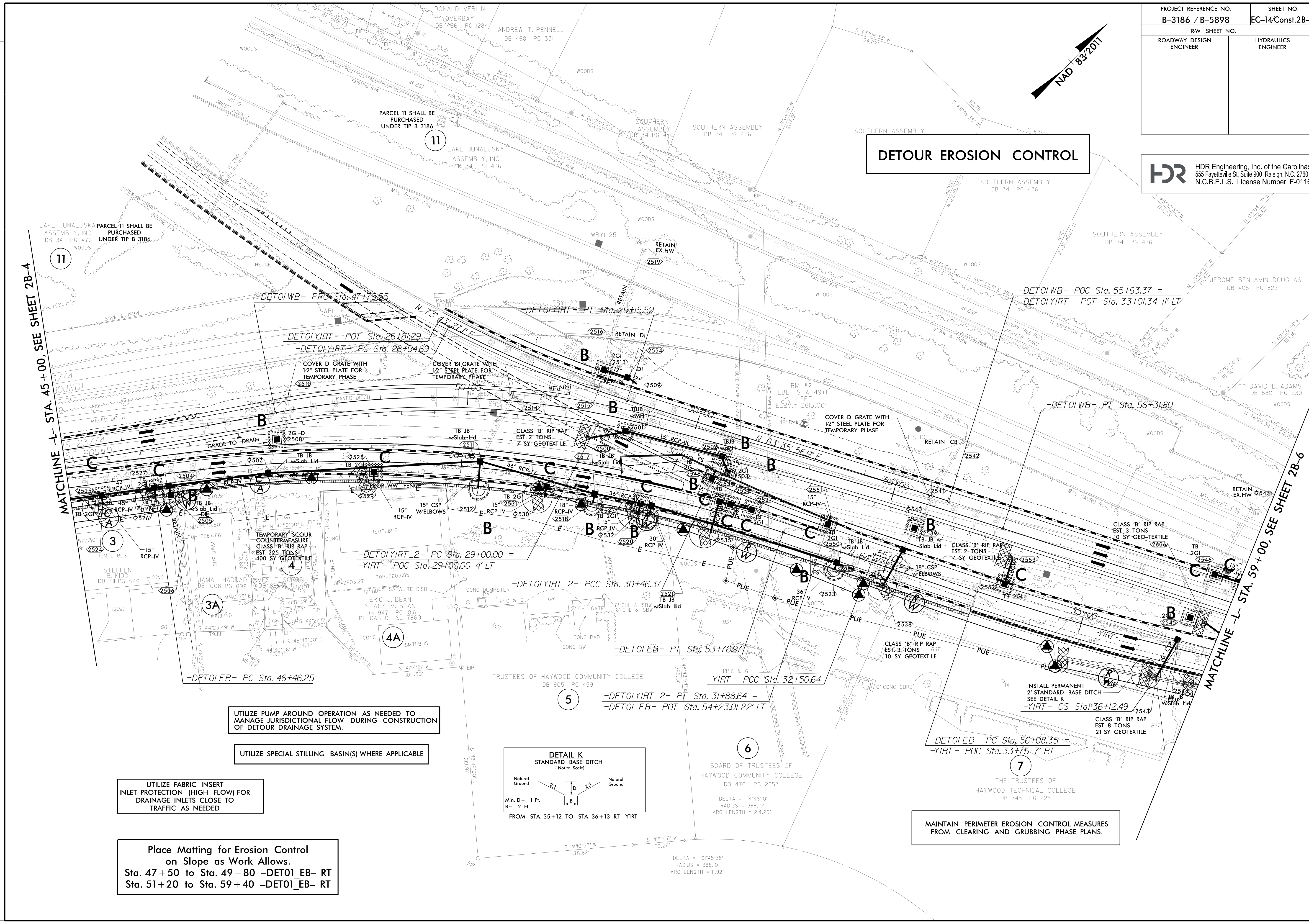
FROM STA. 29+31 TO STA. 34+83 RT -DETO1EB-

BLUE RIDGE PAPER PRODUCTS INC. DB 472 PG 1065
DUKE ENERGY PROGRESS, INC. DB 847 PG 1859 DB 487 PG 478

PROJECT REFERENCE NO. B-3186 / B-5898	SHEET NO. EC-14/Const.2B-5
RW SHEET NO.	
ROADWAY DESIGN ENGINEER	HYDRAULICS ENGINEER

HDR HDR Engineering, Inc. of the Carolinas
555 Fayetteville St. Suite 900 Raleigh, N.C. 27601
N.C.B.E.L.S. License Number: F-0116

DETOUR EROSION CONTROL



MATCHLINE -L- STA. 45+00, SEE SHEET 2B-4

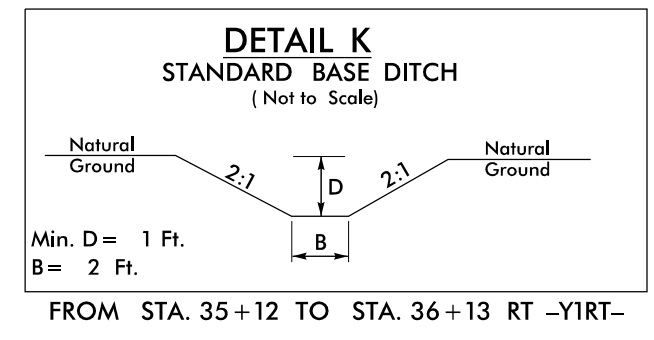
MATCHLINE -L- STA. 59+00, SEE SHEET 2B-6

UTILIZE PUMP AROUND OPERATION AS NEEDED TO MANAGE JURISDICTIONAL FLOW DURING CONSTRUCTION OF DETOUR DRAINAGE SYSTEM.

UTILIZE SPECIAL STILLING BASIN(S) WHERE APPLICABLE

UTILIZE FABRIC INSERT INLET PROTECTION (HIGH FLOW) FOR DRAINAGE INLETS CLOSE TO TRAFFIC AS NEEDED

Place Matting for Erosion Control on Slope as Work Allows.
Sta. 47+50 to Sta. 49+80 -DETOI_EB- RT
Sta. 51+20 to Sta. 59+40 -DETOI_EB- RT



6
BOARD OF TRUSTEES OF HAYWOOD COMMUNITY COLLEGE
DB 470 PG 2257
DELTA = 14°46'10"
RADIUS = 388.10'
ARC LENGTH = 24.29'

MAINTAIN PERIMETER EROSION CONTROL MEASURES FROM CLEARING AND GRUBBING PHASE PLANS.

PLOT DRIVER: NCDOT_ncdot_eng_100.plt
 USER: WYELVERT
 FILE: NCDOT\NCDOT-B3186_T02.c. v6.0.CAD_BITMAP.6.2_Work_In_Progress\B-3186-B-5898\Erosion Control\B3186-HYD-EC.PSH-INTERMEDIATE.dgn
 PENTABLE: NCDOT_EC_FINAL_EW.tbl
 DATE: 11/30/2021
 TIME: 10:52:47 AM
 REVISIONS

DETOUR EROSION CONTROL

UTILIZE FABRIC INSERT
INLET PROTECTION (HIGH FLOW) FOR
DRAINAGE INLETS CLOSE TO
TRAFFIC AS NEEDED

PROJECT REFERENCE NO. B-3186 / B-5898	SHEET NO. EC-15Const.2B-6
RW SHEET NO.	
ROADWAY DESIGN ENGINEER	HYDRAULICS ENGINEER

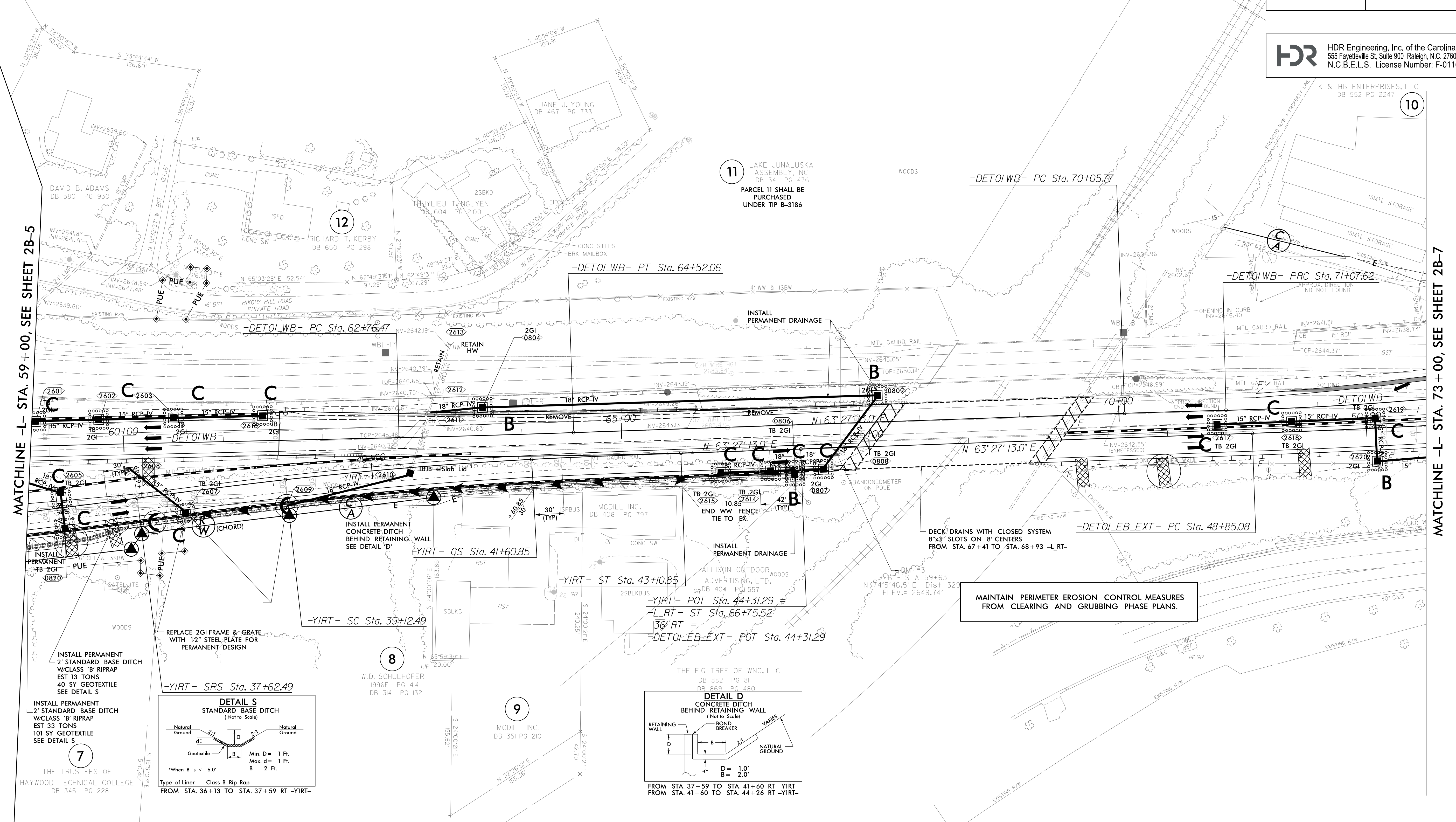
HDR HDR Engineering, Inc. of the Carolinas
555 Fayetteville St. Suite 900 Raleigh, N.C. 27601
N.C.B.E.L.S. License Number: F-0116

K & HB ENTERPRISES, LLC
DB 552 PG 2247

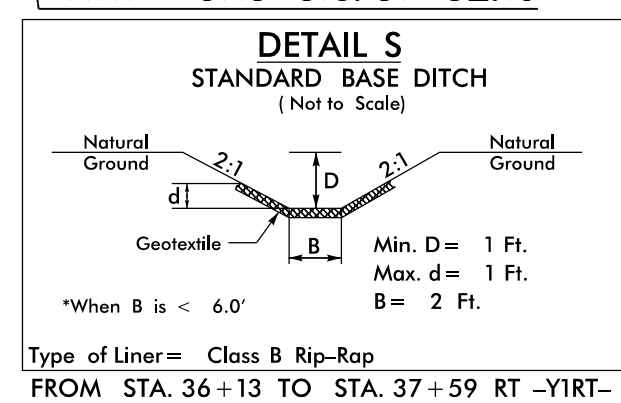
10

MATCHLINE -L- STA. 59+00, SEE SHEET 2B-5

MATCHLINE -L- STA. 73+00, SEE SHEET 2B-7

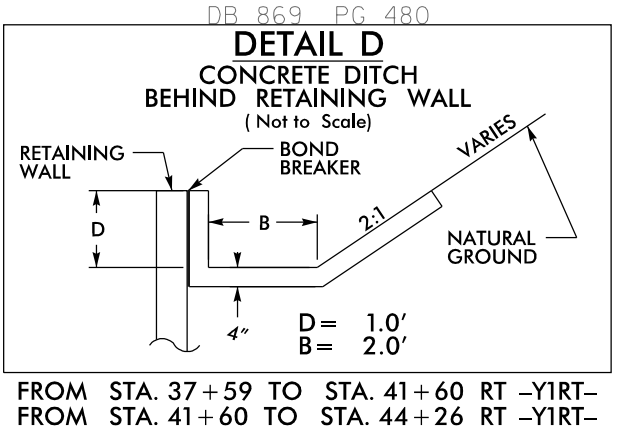


7
INSTALL PERMANENT
2' STANDARD BASE DITCH
W/CLASS 'B' RIPRAP
EST 33 TONS
101 SY GEOTEXTILE
SEE DETAIL S



8
W.D. SCHULHOFER
1996E PG 414
DB 314 PG 132

9
MCDILL, INC.
DB 351 PG 210



MAINTAIN PERIMETER EROSION CONTROL MEASURES
FROM CLEARING AND GRUBBING PHASE PLANS.

DECK DRAINS WITH CLOSED SYSTEM
8"x3" SLOTS ON 8' CENTERS
FROM STA. 67+41 TO STA. 68+93 -L-RT-

11 LAKE JUNALUSKA
ASSEMBLY, INC
DB 34 PG 476
PARCEL 11 SHALL BE
PURCHASED
UNDER TIP B-3186

12
RICHARD T. KERBY
DB 650 PG 298

PLOT DRIVER: NCDOT_color_eng_100.plt
USER: WYELVERT
FILE: NCDOT\NCDOT-B3186_102.c\6.0.CAD.BTM\6.2.Work.In.Progress\B-5898\Erosion Control\B3186-HYD-EC.PSH_INTERMEDIATE.dgn
PENTABLE: NCDOT_EC_FINAL_BW.tbl
TIME: 11/30/2021 11:06:37 AM
DATE: 11/30/2021
DATE: 11/30/2021

REVISIONS

FO
FO
FO

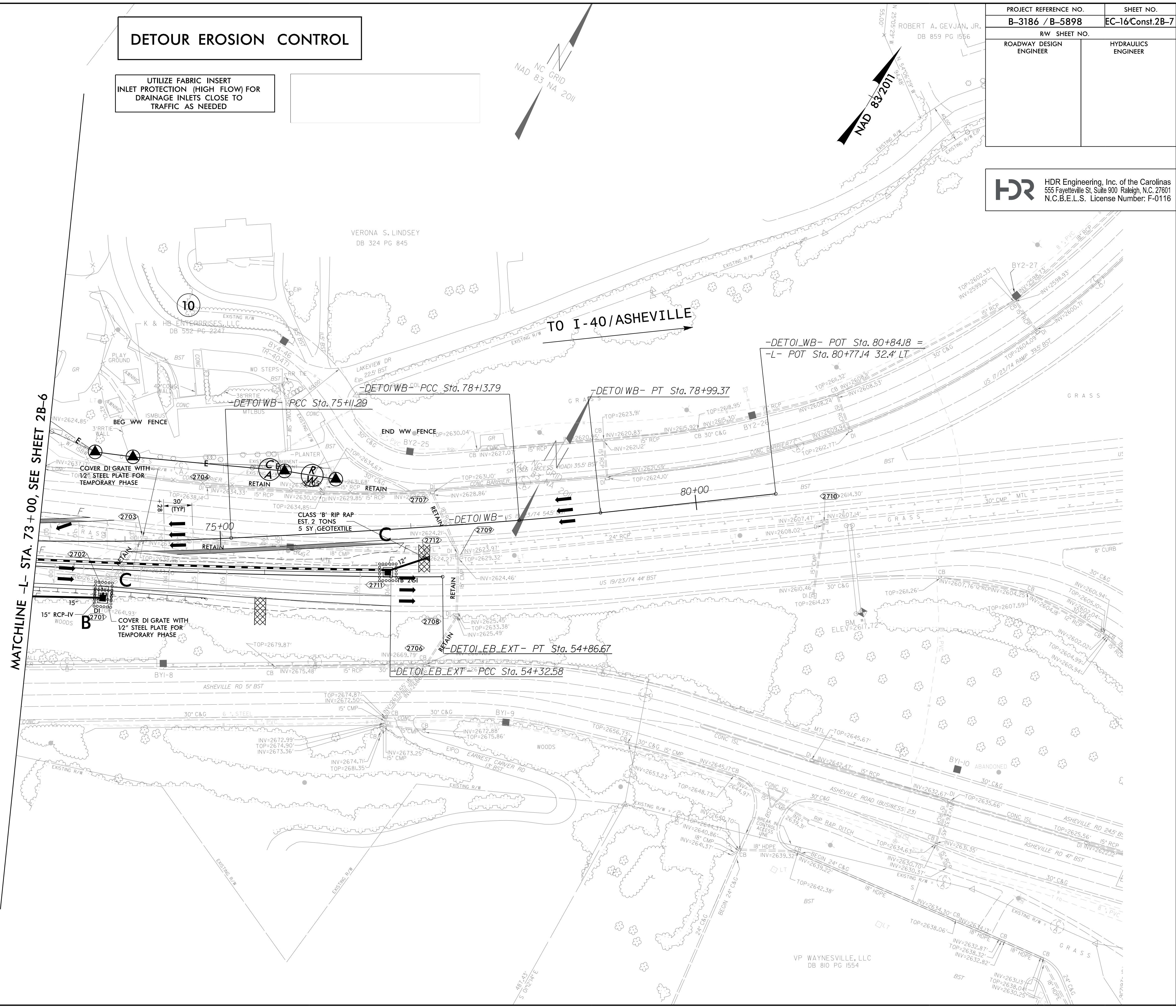
DETOUR EROSION CONTROL

UTILIZE FABRIC INSERT
INLET PROTECTION (HIGH FLOW) FOR
DRAINAGE INLETS CLOSE TO
TRAFFIC AS NEEDED



PROJECT REFERENCE NO. B-3186 / B-5898	SHEET NO. EC-16Const.2B-7
RW SHEET NO.	
ROADWAY DESIGN ENGINEER	HYDRAULICS ENGINEER

HDR HDR Engineering, Inc. of the Carolinas
555 Fayetteville St. Suite 900 Raleigh, N.C. 27601
N.C.B.E.L.S. License Number: F-0116



PLOT DRIVER: NCDOT_color_eng_100.plt
 USER: WYELVERT
 FILE: NCDOT\NCDOT-B3186_T02.c. \6.0.CAD.BTM.6.2.Work.In.Progress\B-5898\B-3186-B-5898\B-3186-B-5898\B-3186-B-5898\Hyd.EC.PSH.INTERMEDIATE.dgn
 DATE: 11/30/2021
 TIME: 11:09:21 AM
 PENTABLE: NCDOT_EC_FINAL_BW.tbl
 REVISIONS

PROJECT REFERENCE NO.	SHEET NO.
B-3186 / B-5898	EC-17Const. 4
RW SHEET NO.	
ROADWAY DESIGN ENGINEER	HYDRAULICS ENGINEER

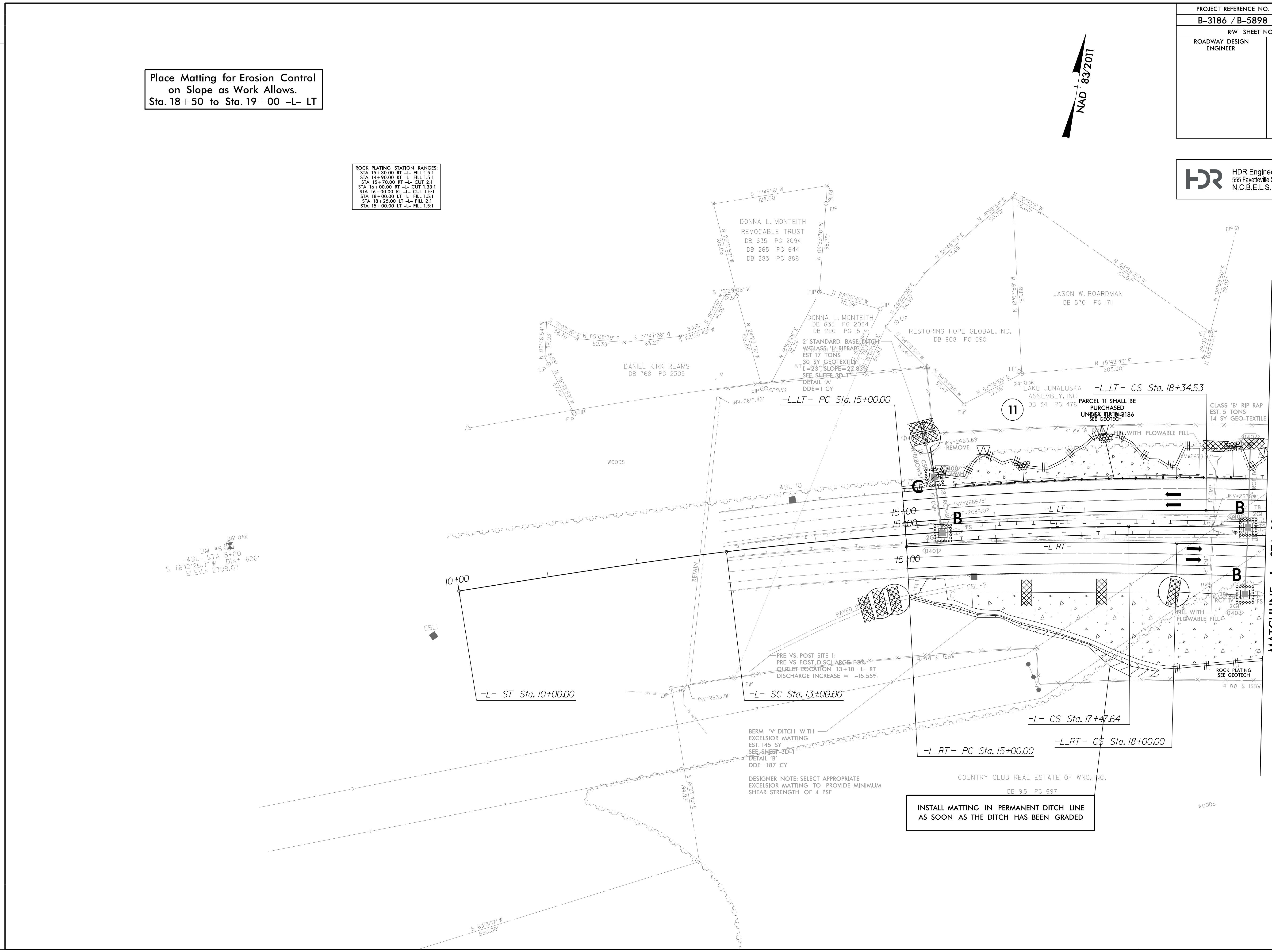
HDR HDR Engineering, Inc. of the Carolinas
 555 Fayetteville St. Suite 900 Raleigh, N.C. 27601
 N.C.B.E.L.S. License Number: F-0116

Place Matting for Erosion Control
 on Slope as Work Allows.
 Sta. 18+50 to Sta. 19+00 -L- LT

ROCK PLATING STATION RANGES:
 STA 15+30.00 RT -L- FILL 1.5:1
 STA 14+90.00 RT -L- FILL 1.5:1
 STA 15+70.00 RT -L- CUT 2:1
 STA 16+00.00 RT -L- CUT 1.33:1
 STA 16+00.00 RT -L- CUT 1.5:1
 STA 18+00.00 LT -L- FILL 1.5:1
 STA 18+75.00 LT -L- FILL 2:1
 STA 15+00.00 LT -L- FILL 1.5:1



PLOT DRIVER: NCDOT_color_eng_100.plt
 USER: WYELVERT
 FILE: NCDOT\NCDOT-B3186_T02.c. \6.0.CAD.BTM\6.2.Work_In_Progress\B-3186-B-5898\Erosion Control\B3186-HYD-EC.PSH_FINAL.dgn
 PENTABLE: NCDOT_EC_FINAL_BW.tbl
 DATE: 11/30/2021
 TIME: 10:12:51 AM
 RIGHT-OF-WAY REVISION 11-9-2021 : ADDED PARCEL 11 FOR LAKE JUNALUSKA ASSEMBLY
 ADDED NOTE FOR TIP ACQUISITION



MATCHLINE -L- STA. 19+00, SEE SHEET 5

PROJECT REFERENCE NO.	SHEET NO.
B-3186 / B-5898	EC-18/Const. 5
RW SHEET NO.	
ROADWAY DESIGN ENGINEER	HYDRAULICS ENGINEER

HDR HDR Engineering, Inc. of the Carolinas
 555 Fayetteville St. Suite 900 Raleigh, N.C. 27601
 N.C.B.E.L.S. License Number: F-0116

Place Matting for Erosion Control
 on Slope as Work Allows.
 Sta. 19+00 to Sta. 24+75 -L- LT
 Sta. 20+25 to Sta. 22+20 -L- RT

UTILIZE SPECIAL STILLING BASIN(S) WHERE APPLICABLE

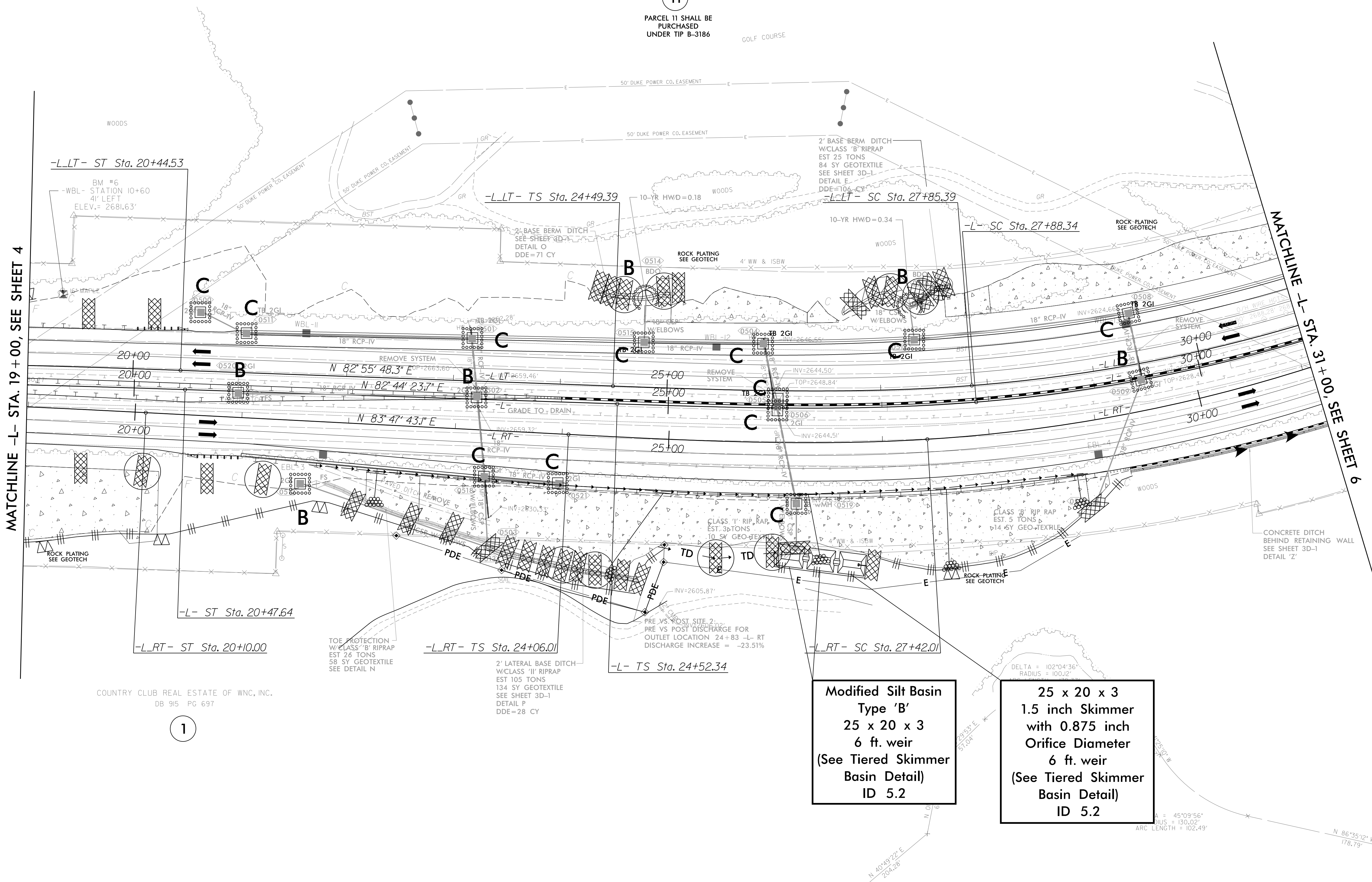
ROCK PLATING STATION RANGES:

STA 20+00.00 RT -L- CUT 1.5:1
STA 20+25.00 RT -L- CUT 2:1
STA 22+20.00 RT -L- FILL 2:1
STA 28+79.00 RT -L- FILL 1.5:1
STA 22+70.00 RT -L- FILL 1.5:1
STA 29+00.00 RT -L- FILL 2:1
STA 26+55.00 LT -L- CUT 2:1
STA 27+85.00 LT -L- CUT 1.5:1
STA 28+10.00 LT -L- CUT 1.3:1
STA 24+75.00 LT -L- CUT 2:1
STA 25+00.00 LT -L- CUT 1.5:1
STA 26+30.00 LT -L- CUT 1.5:1
STA 26+60.00 LT -L- CUT 2:1

LAKE JUNALUSKA
 ASSEMBLY, INC
 DB 34 PG 476

11
 PARCEL 11 SHALL BE
 PURCHASED
 UNDER TIP B-3186

NAD 83/2011



MATCHLINE -L- STA. 19+00, SEE SHEET 4

MATCHLINE -L- STA. 31+00, SEE SHEET 6

Modified Silt Basin
 Type 'B'
 25 x 20 x 3
 6 ft. weir
 (See Tiered Skimmer
 Basin Detail)
 ID 5.2

25 x 20 x 3
 1.5 inch Skimmer
 with 0.875 inch
 Orifice Diameter
 6 ft. weir
 (See Tiered Skimmer
 Basin Detail)
 ID 5.2

COUNTRY CLUB REAL ESTATE OF WNC, INC.
 DB 915 PG 697

1

REVISIONS

RIGHT-OF-WAY REVISION 11-9-2021 : ADDED PARCEL 11 FOR LAKE JUNALUSKA ASSEMBLY
 ADDED NOTE FOR TIP ACQUISITION

PLOT DRIVER: NCDOT_color_eng_100.plt
 USER: WYELVERT
 FILE: NCDOT\NCDOT-B3186_T02.c. \6.0.CAD.BTM\6.2.Work.In.Prog\B-3186-B-5898\Erosion Control\B3186-B5898-HYD-EC.PSH_FINAL.dgn

PENTABLE: NCDOT_EC_FINAL_BW.tbl
 DATE: 11/30/2021
 TIME: 10:15:40 AM

PROJECT REFERENCE NO.	SHEET NO.
B-3186 / B-5898	EC-19/Const. 6
RW SHEET NO.	
ROADWAY DESIGN ENGINEER	HYDRAULICS ENGINEER

HDR HDR Engineering, Inc. of the Carolinas
 555 Fayetteville St. Suite 900 Raleigh, N.C. 27601
 N.C.B.E.L.S. License Number: F-0116

Place Matting for Erosion Control on Slope as Work Allows.
 Sta. 35+50 to Sta. 40+75 -L- RT
 Sta. 39+00 to Sta. 42+00 -L- LT

UTILIZE SPECIAL STILLING BASIN(S) WHERE APPLICABLE

40 x 16 x 3
 1.5 inch Skimmer
 with 0.875 inch
 Orifice Diameter
 5 ft. weir
 (See Tiered Skimmer
 Basin Detail)
 ID 6.2

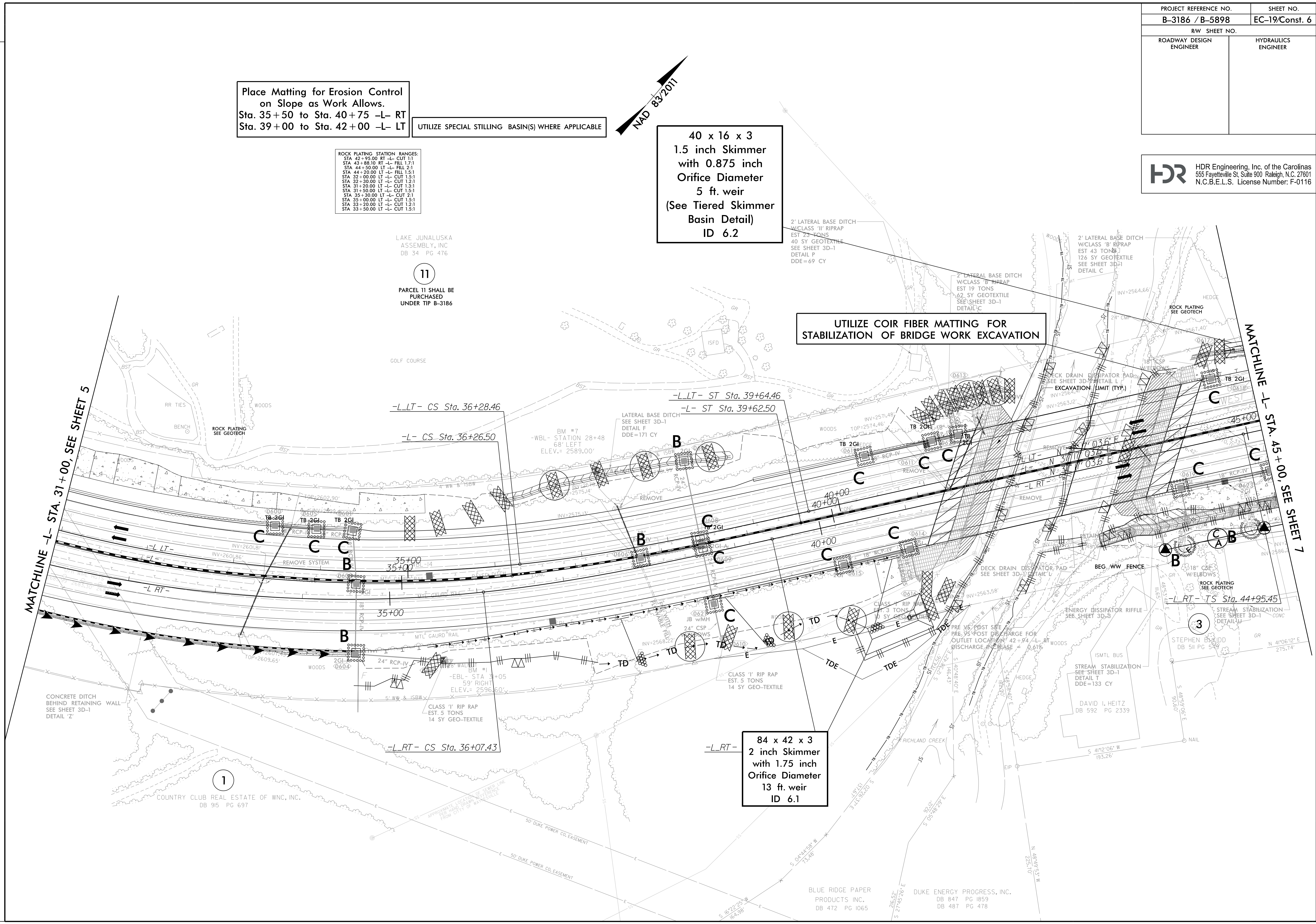
ROCK PLATING STATION RANGES:
 STA 42+95.00 RT -L- CUT 1:1
 STA 43+88.10 RT -L- FILL 1.5:1
 STA 44+50.00 LT -L- FILL 2:1
 STA 44+30.00 LT -L- FILL 1.5:1
 STA 32+00.00 LT -L- CUT 1.5:1
 STA 32+30.00 LT -L- CUT 1.2:1
 STA 31+20.00 LT -L- CUT 1.3:1
 STA 31+50.00 LT -L- CUT 1.5:1
 STA 35+30.00 LT -L- CUT 2:1
 STA 35+00.00 LT -L- CUT 1.5:1
 STA 33+20.00 LT -L- CUT 1.2:1
 STA 33+50.00 LT -L- CUT 1.5:1

LAKE JUNALUSKA
 ASSEMBLY, INC
 DB 34 PG 476

11
 PARCEL 11 SHALL BE
 PURCHASED
 UNDER TIP B-3186

UTILIZE COIR FIBER MATTING FOR
 STABILIZATION OF BRIDGE WORK EXCAVATION

84 x 42 x 3
 2 inch Skimmer
 with 1.75 inch
 Orifice Diameter
 13 ft. weir
 ID 6.1



PLOT DRIVER: NCDOT_color_eng_100.plt
 USER: WYELVERT
 FILE: NCDOT\NCDOT-B3186_T02.c. \6.0.CAD.BTM\6.2_Work.In_Progress\B-3186-B-5898-Erosion_Contra\B3186-B5898-HYD-EC_PSH_FINAL.dgn

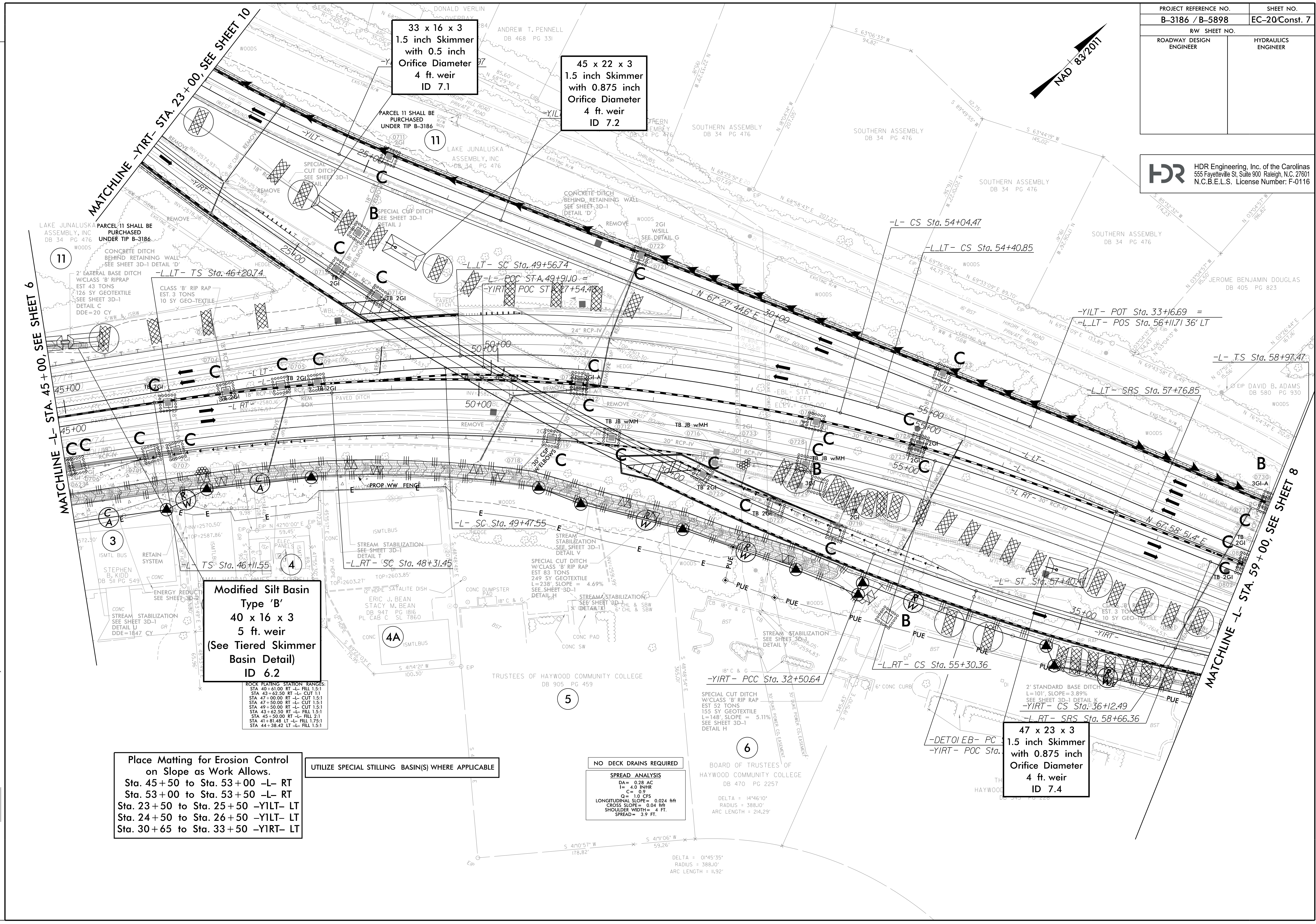
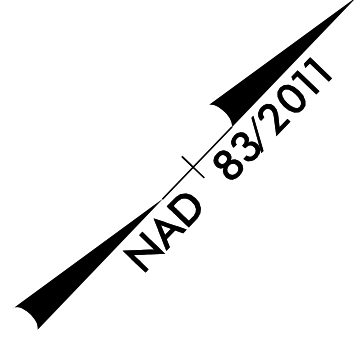
PENTABLE: NCDOT_EC_FINAL_BW.tbl
 TIME: 10:16:38 AM
 DATE: 11/30/2021

RIGHT-OF-WAY REVISION 11-9-2021 : ADDED PARCEL 11 FOR LAKE JUNALUSKA ASSEMBLY
 RIGHT-OF-WAY REVISION 11-9-2021 : ADDED NOTE FOR TIP ACQUISITION
 RIGHT-OF-WAY REVISION 11-9-2021 : ELIMINATED PARCEL 2

REVISIONS

PROJECT REFERENCE NO. B-3186 / B-5898	SHEET NO. EC-20Const. 7
RW SHEET NO.	
ROADWAY DESIGN ENGINEER	HYDRAULICS ENGINEER

HDR HDR Engineering, Inc. of the Carolinas
555 Fayetteville St. Suite 900 Raleigh, N.C. 27601
N.C.B.E.L.S. License Number: F-0116



Place Matting for Erosion Control on Slope as Work Allows.
Sta. 45+50 to Sta. 53+00 -L- RT
Sta. 53+00 to Sta. 53+50 -L- RT
Sta. 23+50 to Sta. 25+50 -YILT- LT
Sta. 24+50 to Sta. 26+50 -YILT- LT
Sta. 30+65 to Sta. 33+50 -YIRT- LT

UTILIZE SPECIAL STILLING BASIN(S) WHERE APPLICABLE

NO DECK DRAINS REQUIRED
SPREAD ANALYSIS
DA = 0.28 AC
I = 4.0 IN/HR
C = 0.9
Q = 1.0 CFS
LONGITUDINAL SLOPE = 0.024 H/H
CROSS SLOPE = 0.04 H/H
SHOULDER WIDTH = 4 FT.
SPREAD = 3.9 FT.

Modified Silt Basin Type 'B'
40 x 16 x 3
5 ft. weir
(See Tiered Skimmer Basin Detail)
ID 6.2

ROCK PLACING STATION RANGES:
STA 40+61.00 RT -L- FILL 1.5:1
STA 43+62.50 RT -L- CUT 1:1
STA 47+00.00 RT -L- CUT 1.5:1
STA 47+50.00 RT -L- CUT 1.5:1
STA 49+50.00 RT -L- CUT 1.5:1
STA 45+62.50 RT -L- FILL 1.5:1
STA 45+50.00 RT -L- FILL 2:1
STA 41+81.48 LT -L- FILL 1.75:1
STA 44+38.42 LT -L- FILL 1.5:1

REVISIONS

RIGHT-OF-WAY REVISION 11-4-2021 : NEW SURVEY AND TOPOGRAPHY, ADDED PARCEL 3A
RIGHT-OF-WAY REVISION 11-9-2021 : ADDED PARCEL 11 FOR LAKE JUNALUSKA ASSEMBLY
RIGHT-OF-WAY REVISION 11-9-2021 : ADDED NOTE FOR TIP ACQUISITION
RIGHT-OF-WAY REVISION 11-9-2021 : NEW SURVEY AND TOPOGRAPHY, ADDED PARCEL 4A

PLOT DRIVER: NCDOT_color_eng_100.plt
USER: WYELVERT
FILE: NCDOT\NCDOT-B3186_T02.cad

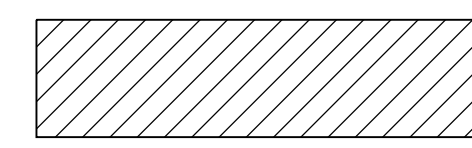
PENTABLE: NCDOT_EC_FINAL_BW.tbl
DATE: 11/30/2021
TIME: 10:18:52 AM

PROJECT: Erosion Control\B3186-B-5898-Erosion Control\B3186-HYD-EC.PSH.FINAL.dgn

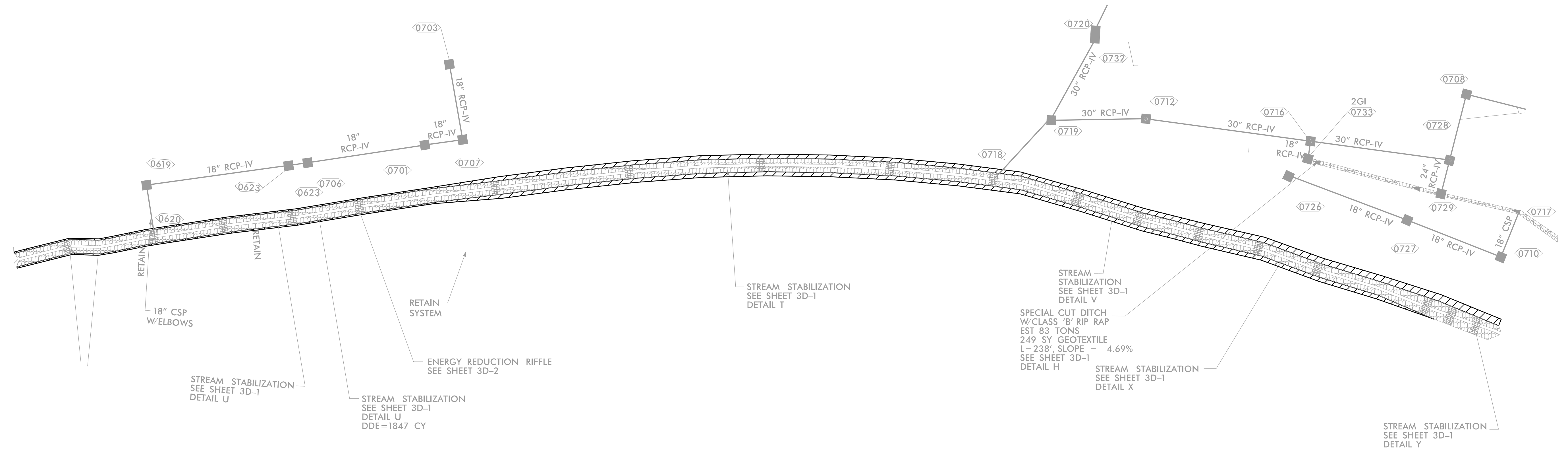
PROJECT REFERENCE NO.		SHEET NO.	
B-3186 / B-5898		EC-20A/CONST.7	
RW SHEET NO.			
ROADWAY DESIGN ENGINEER		HYDRAULICS ENGINEER	

0.13 ACRE STREAMBANK REFORESTATION

LEGEND



STREAMBANK REFORESTATION (TYPE II) – 0.13 AC



NOT TO SCALE

SEE RF-2, RF-3 AND PROJECT SPECIAL PROVISIONS