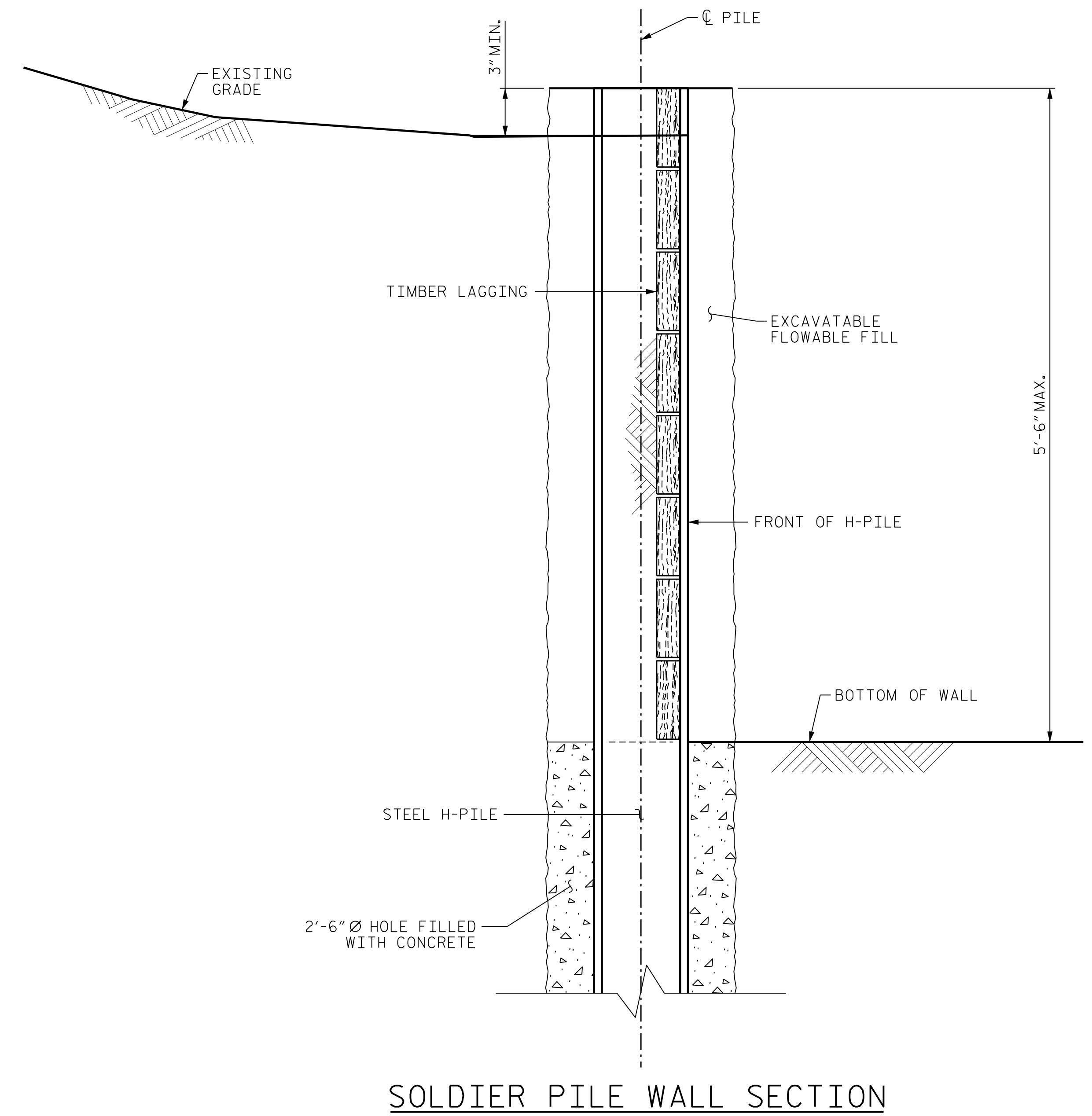


PLOT DRIVER: NCDOT_STRUCTURE_DEFAULT_PLOTTER.plt
 PENTABLE: NCDOT_STRUCTURE_DEFAULT_PEN.tbl
 USER: PETERSON DATE: 1/24/2022 TIME: 2:48:40 PM
 FILE: ...\\404.300.B58983186.SMU.RW.061.430107.dgn



SOLDIER PILE WALL SECTION

NOTES:

FOR TEMPORARY RAILROAD SHORING, SEE SPECIAL PROVISIONS.
 FOR SOLDIER PILE RETAINING WALLS, SEE SPECIAL PROVISIONS.
 BEFORE BEGINNING SOLDIER PILE WALL DESIGN FOR RETAINING WALL NO. 2, SURVEY WALL LOCATION AND SUBMIT A REVISED WALL PROFILE VIEW (WALL ENVELOPE) FOR REVIEW. DO NOT START WALL DESIGN OR CONSTRUCTION UNTIL THE REVISED WALL ENVELOPE IS ACCEPTED.
 DESIGN RETAINING WALL NO. 2 FOR THE FOLLOWING:
 1. DESIGN HEIGHT (H) = WALL HEIGHT
 2. IN-SITU ASSUMED MATERIAL PARAMETERS ABOVE ELEVATION 2600 FT:
 a. Unit Weight = 120 PCF
 b. Friction Angle = 28 DEGREES
 c. Cohesion = 0 PSF
 3. IN-SITU ASSUMED MATERIAL PARAMETERS BELOW ELEVATION 2600 FT:
 a. Unit Weight = 125 PCF
 b. Friction Angle = 34 DEGREES
 c. Cohesion = 0 PSF
 4. ASSUMED GROUNDWATER ELEVATION 2620 FT.
 DESIGN RETAINING WALL NO. 2 FOR A COOPER E80 RAILROAD LIVE LOAD.
 DRILLED-IN H-PILES ARE REQUIRED FOR RETAINING WALL NO. 2.
 NO SPLICES ARE PERMITTED IN H-PILES EXCEPT WHERE LOW VERTICAL CLEARANCE IS AN ISSUE.
 FOR PILE SPLICE DETAILS, SEE "SUBSTRUCTURE END BENT 1 SECTIONS AND DETAILS" SHEET.
 CURE CONCRETE AND EXCAVATABLE FLOWABLE FILL AT LEAST 7 DAYS BEFORE EXCAVATING IN FRONT OF TEMPORARY SHORING.
 EXCAVATE IN FRONT OF PILES FROM THE TOP DOWN AND IMMEDIATELY INSTALL TIMBER LAGGING BETWEEN PILES TO RETAIN THE SOIL AS EXCAVATION PROGRESSES.
 POSITION LAGGING WITH AT LEAST 3" OF CONTACT IN THE HORIZONTAL DIRECTION BETWEEN LAGGING AND H-PILE FLANGES.
 REMOVE TEMPORARY RAILROAD SHORING WHEN NO LONGER NEEDED TO A MINIMUM OF TWO FEET BELOW PROPOSED GROUND.

ESTIMATED PILE LENGTH			
TYPE	NO.	LENGTH/EA.	TOTAL
HP14x89	9	34'	306'

PROJECT NO. B-3186/B-5898
HAYWOOD COUNTY
 STATION: 68+65.75± -L-RT-

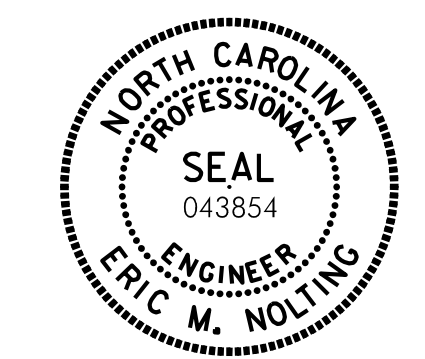
SHEET 2 OF 2

STATE OF NORTH CAROLINA
 DEPARTMENT OF TRANSPORTATION
 RALEIGH

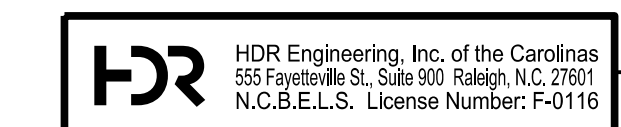
**TEMPORARY SHORING
 SOLDIER PILE
 WALL DETAILS**

REVISIONS					
NO.	BY:	DATE:	NO.	BY:	DATE:
1	--	--	3	--	--
2	--	--	4	--	--

SHEET NO. S03R-61
 TOTAL SHEETS 61



Eric Nolting 1/25/2022



**DOCUMENT NOT CONSIDERED FINAL
 UNLESS ALL SIGNATURES COMPLETED**

DES BY: <u>E. NOLTING</u>	DATE: <u>09/21</u>	DWG BY: <u>B. PETERSON</u>	DATE: <u>09/21</u>
DES CHK: <u>F. CORDOVA</u>	DATE: <u>09/21</u>	CHK BY: <u>F. CORDOVA</u>	DATE: <u>09/21</u>