

**NOTES**

THE FOAM JOINTS SHALL MEET THE MANUFACTURER'S RECOMMENDATION.

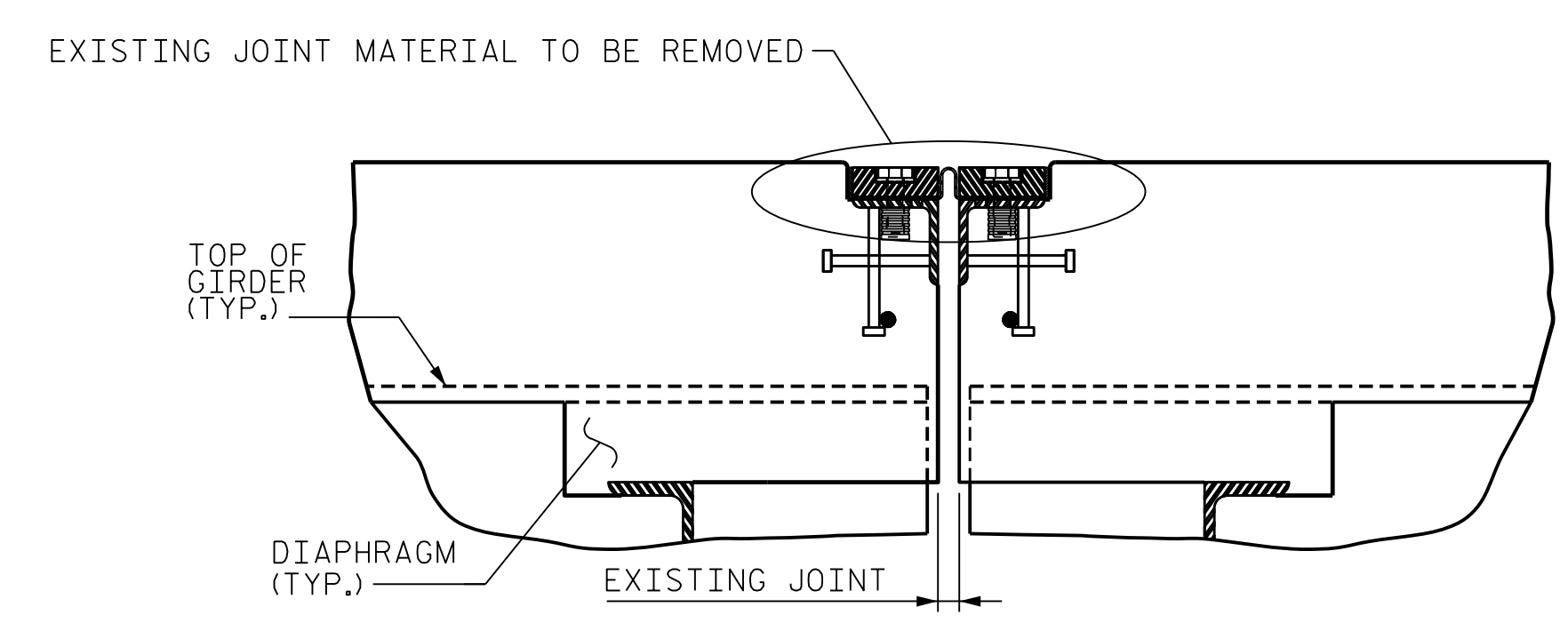
THE UNCOMPRESSED FOAM JOINT SEAL WIDTH SHALL MEET THE MANUFACTURER'S RECOMMENDATION FOR THE SIZE OF OPENING ON THE PLANS, AND ACCOMMODATE THE MINIMUM EXPANSION SHOWN ON THE PLANS.

CONTRACTOR SHALL FIELD VERIFY THE EXISTING JOINT OPENING PRIOR TO ORDERING JOINT SEAL MATERIAL. IF ACTUAL JOINT OPENING VARIES FROM OPENING INDICATED IN DETAIL BY MORE THAN 1/4", NOTIFY ENGINEER.

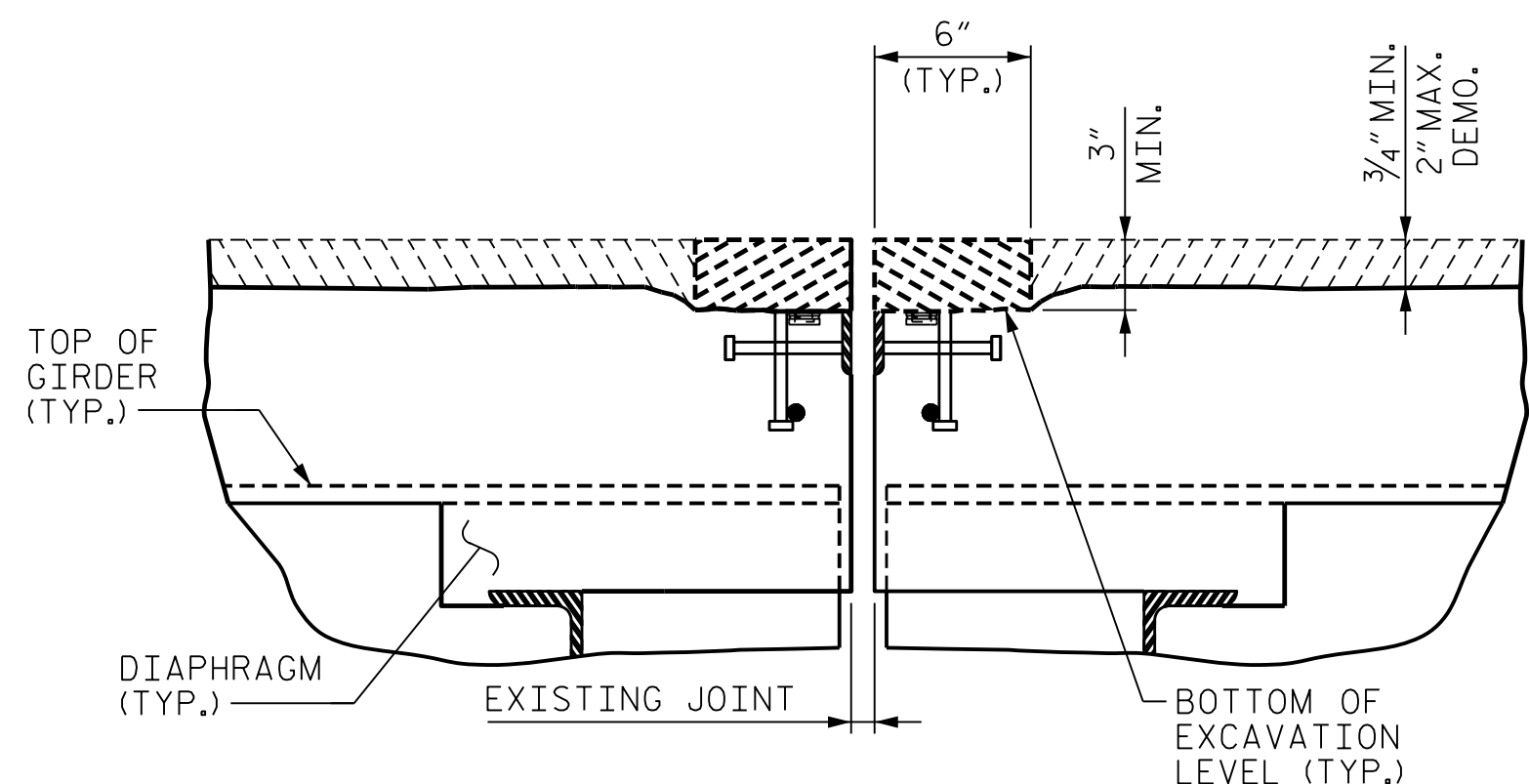
THE INSTALLED FOAM JOINTS SHALL BE WATER TIGHT.

FOR FOAM JOINT SEALS FOR PRESERVATION, SEE SPECIAL PROVISIONS.

THE CONTRACTOR WILL NOT BE PERMITTED TO FORM THE JOINTS IN LIEU OF SAWING THE JOINT.



**SECTION B-B**  
(EXISTING JOINT)

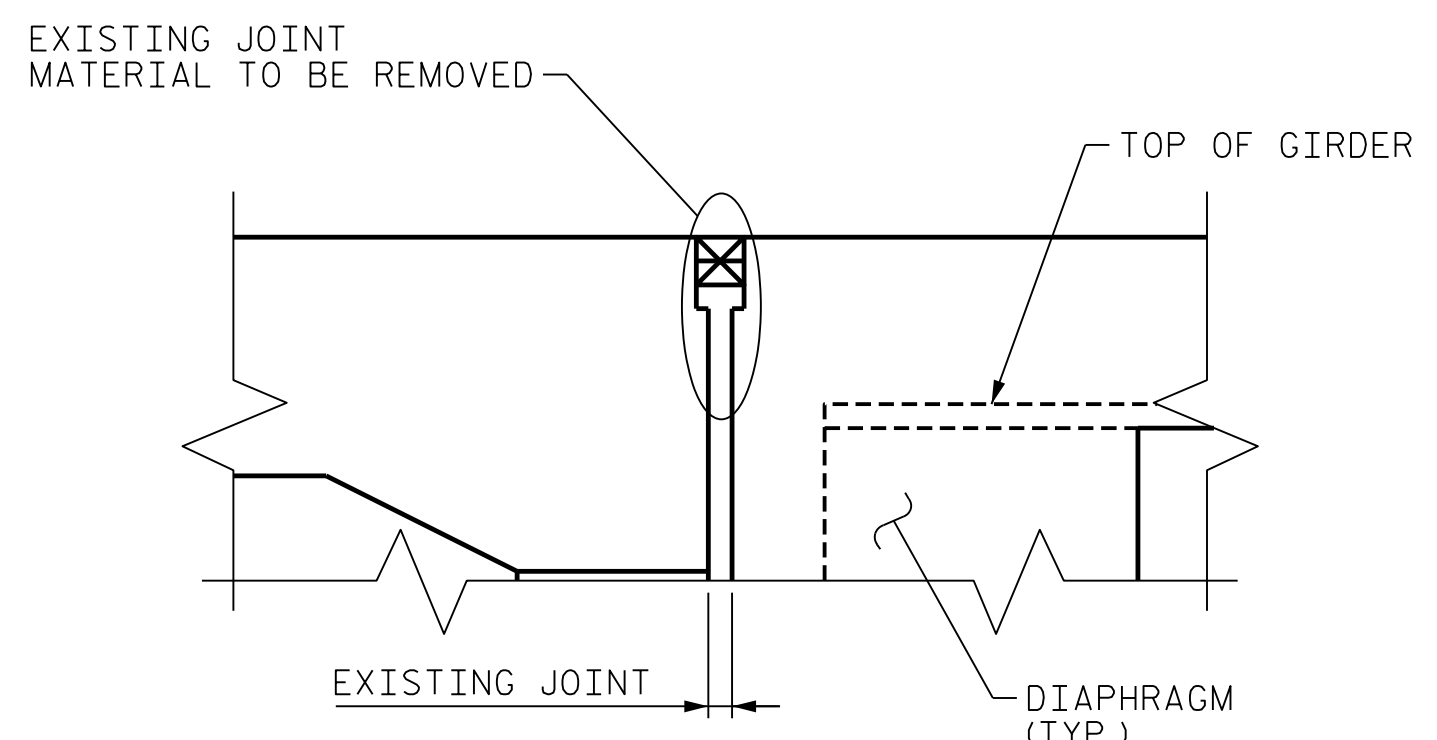


**SECTION B-B**  
(MINIMUM EXISTING JOINT DEMOLITION)

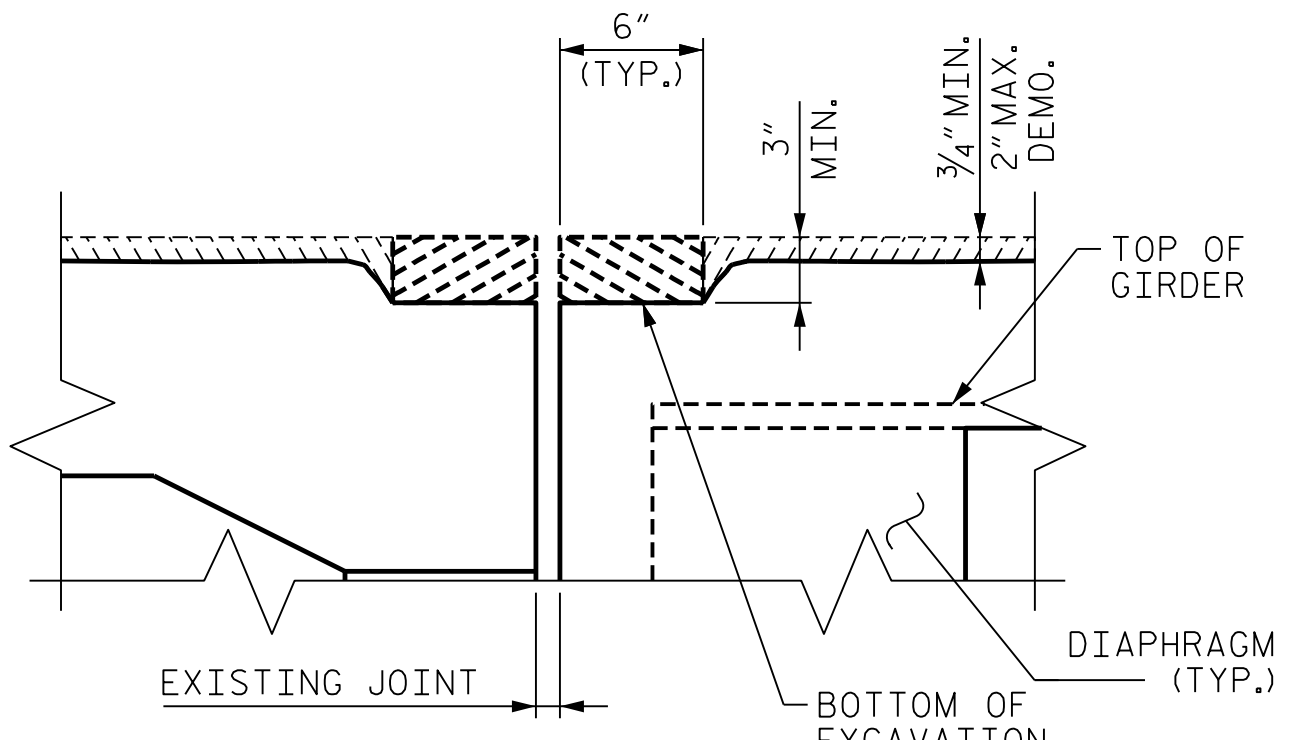
DEMOLITION OF THE EXISTING EXPANSION JOINT SEAL SHOULD BE TO A MINIMUM DEPTH OF 3" AND INCLUDE THE REMOVAL OF THE HORIZONTAL LEG OF THE EMBEDDED ANGLE.

DEMOLISH BRIDGE JOINT AREA TO THE NECESSARY DEPTH, SUCH THAT ELASTOMERIC CONCRETE SHALL BE FOUNDED ON CONCRETE OR REPAIR CONCRETE SUBSTRATE, NOT LATEX MODIFIED CONCRETE. BOTTOM OF EXCAVATION SHALL BE REASONABLY FLAT AND LEVEL TO PROVIDE PROPER SUBSTRATE FOR ELASTOMERIC CONCRETE HEADER.

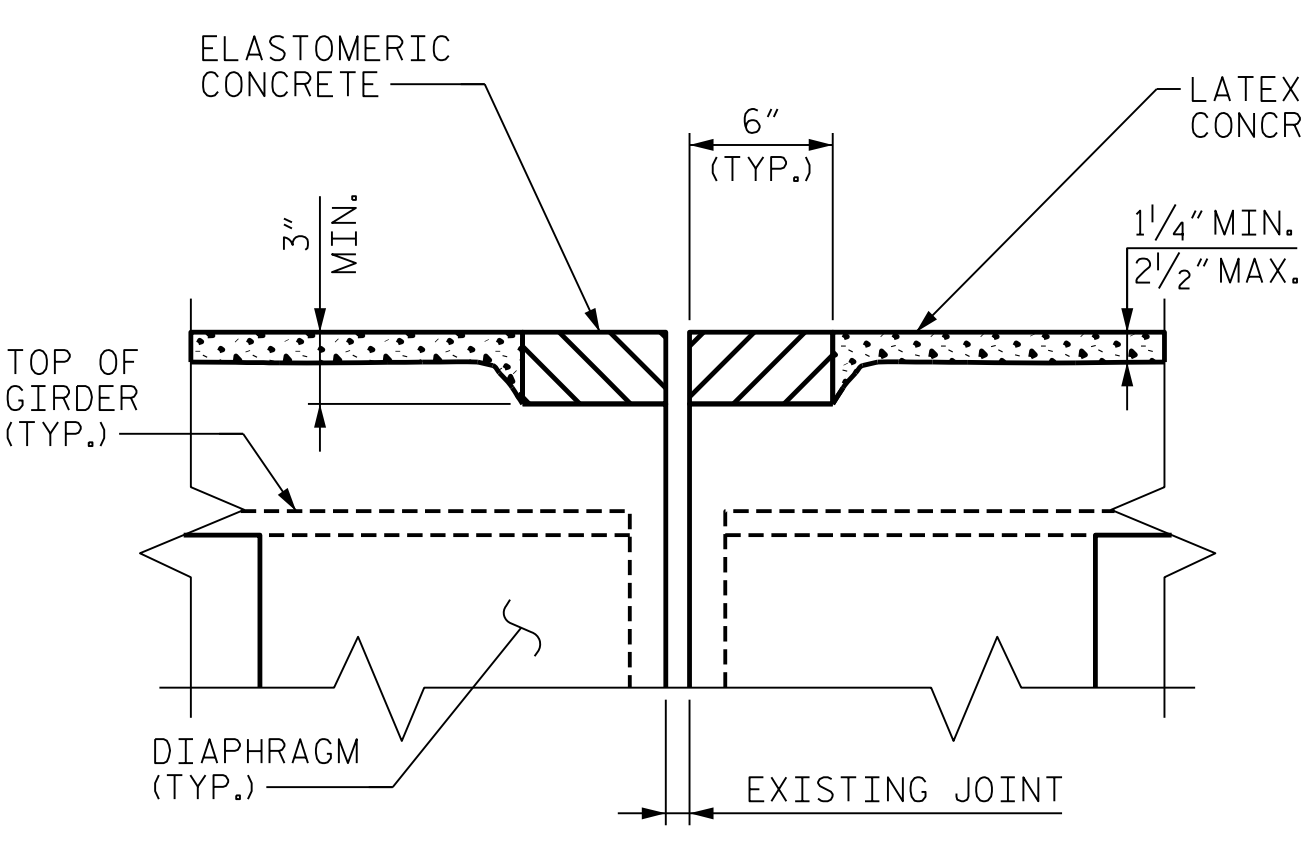
ELASTOMERIC CONCRETE FOR PRESERVATION		
LOCATION	ESTIMATED CU. FT.	ACTUAL CU. FT.
END BENT 1	20.5	
BENT 1	20.5	
BENT 2	20.5	
END BENT 2	20.5	
<b>TOTAL</b>	<b>82.0</b>	



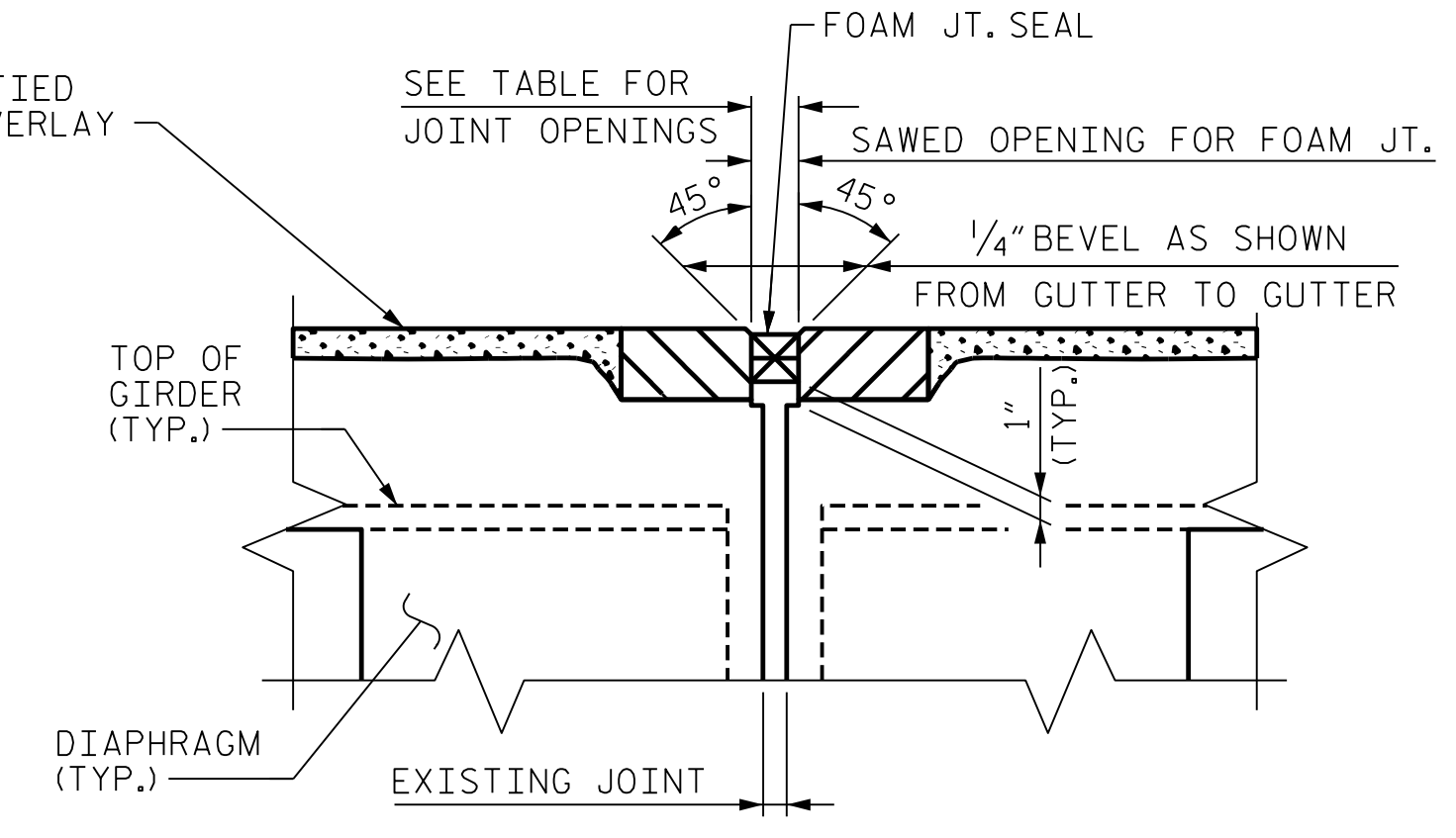
**SECTION A-A**  
(EXISTING JOINT)



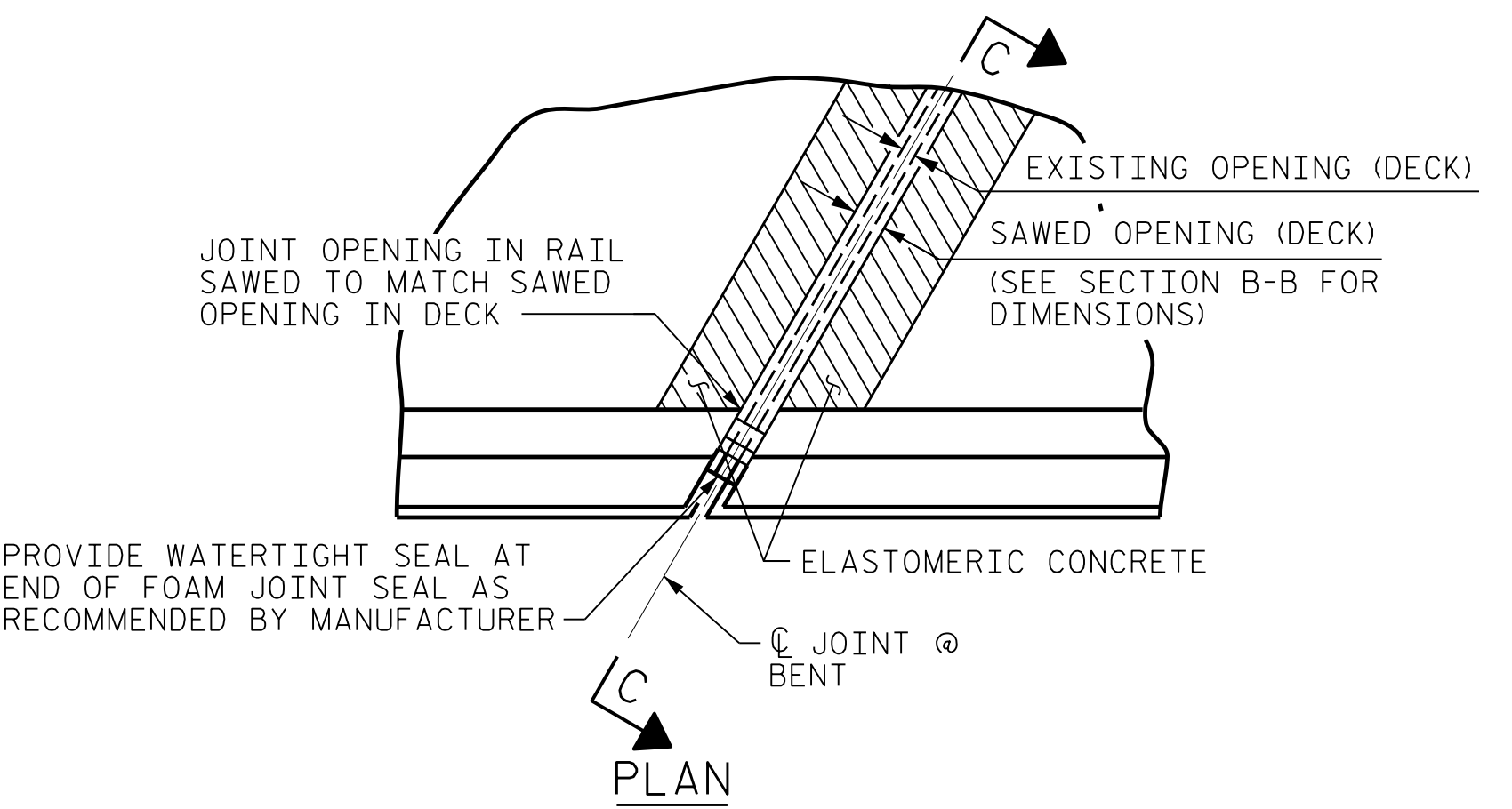
**SECTION A-A**  
(MINIMUM EXISTING JOINT DEMOLITION)



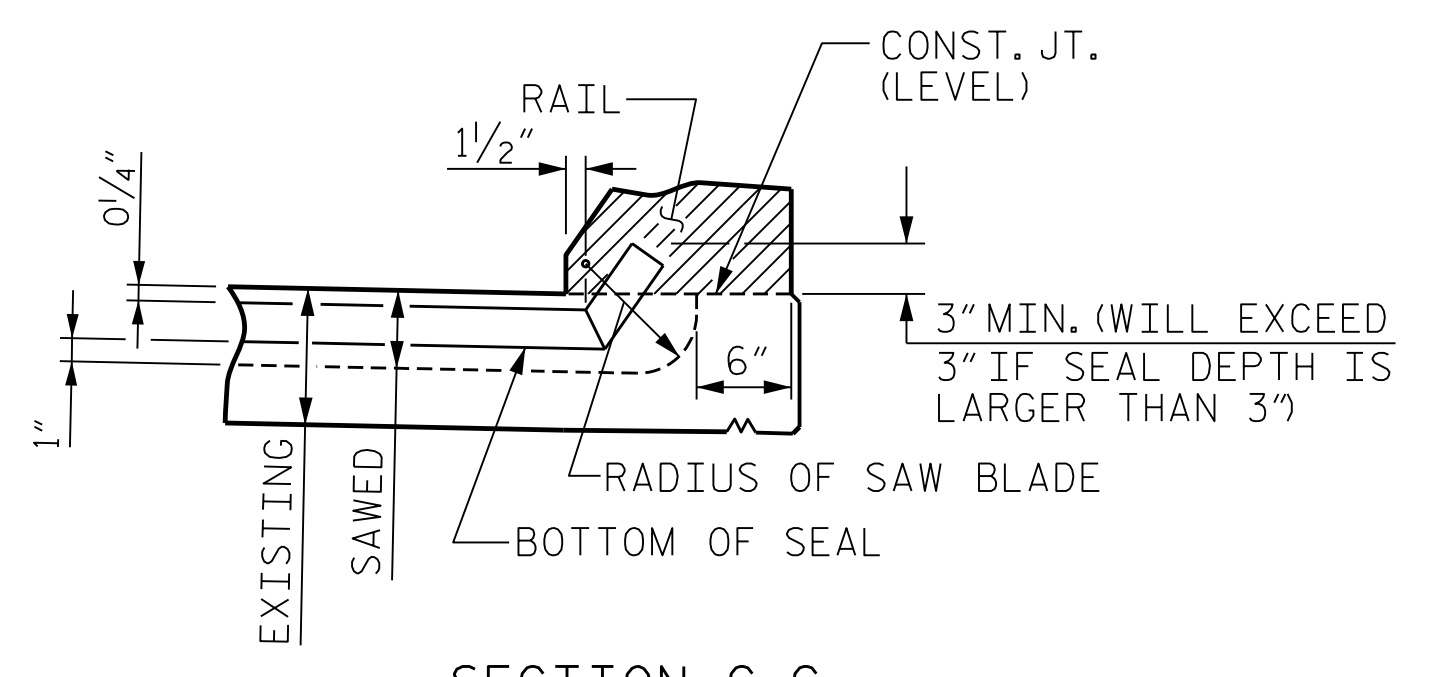
**SECTION A-A OR B-B**  
(PROPOSED JOINT PRE-SAWED)  
(CONDITION AT SECTION B-B SHOWN)



**SECTION A-A OR B-B**  
(PROPOSED FOAM JOINT SEAL)  
(CONDITION AT SECTION B-B SHOWN)



**PLAN**



**SECTION C-C**

FOAM JOINT SEAL SHALL BE CUT, HEAT WELDED AND TURNED UP PARALLEL TO FACE OF RAIL.

JOINT REPAIR QUANTITY TABLE		
	ESTIMATED LIN. FT.	ACTUAL LIN. FT.
FOAM JOINT SEALS FOR PRESERVATION	327.9	

LOCATION	SAWED JT. OPENING (PERPENDICULAR TO JT.)		
	AT 45°	AT 60°	AT 90°
END BENT 1	1 1/16"	1 3/16"	1 1/2"
BENT 1	1 5/8"	1 3/16"	1 1/16"
BENT 2	1 5/8"	1 3/16"	1 1/16"
END BENT 2	1 1/16"	1 3/16"	1 1/2"

PROJECT NO. B-3186/B-5898  
HAYWOOD COUNTY  
 STATION: 68+65.75± -L-RT-

SHEET 6 OF 6

STATE OF NORTH CAROLINA  
 DEPARTMENT OF TRANSPORTATION  
 RALEIGH

**OVERLAY JOINT DETAILS**



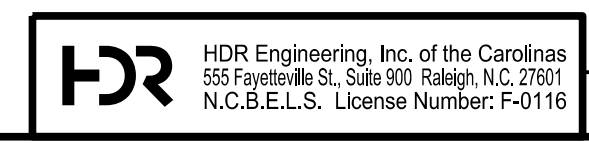
Eric M. Nolting 1/25/2022

REVISIONS					
NO.	BY:	DATE:	NO.	BY:	DATE:
1	--	--	3	--	--
2	--	--	4	--	--

SHEET NO. S03R-56  
 TOTAL SHEETS 61

PLOT DRIVER: NCDOT STRUCTURES DEFAULT PLOTTER.pht  
 USER: PPETERSO  
 DATE: 1/24/2022  
 TIME: 2:47:54 PM  
 FILE: ...\\404.275-B5898B3186-SMU\_JT\_056-430107.dgn

DES BY: G. MYERS DATE: 08/21  
 DES CHK: E. NOLTING DATE: 08/21  
 DWG BY: B. PETERSON DATE: 08/21  
 CHK BY: S. NIFONG DATE: 08/21



DOCUMENT NOT CONSIDERED FINAL  
 UNLESS ALL SIGNATURES COMPLETED