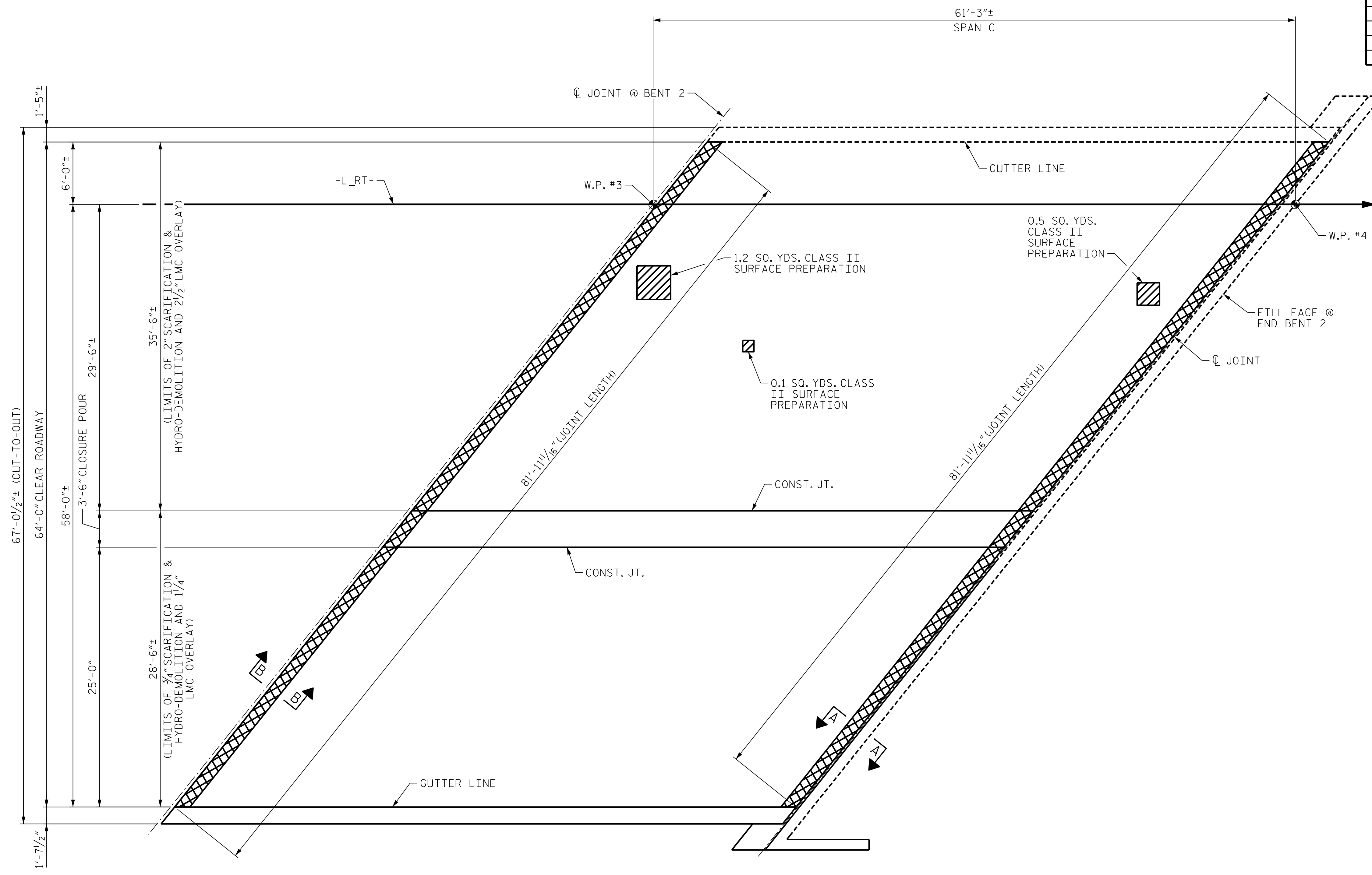


AS-BUILT REPAIR QUANTITY TABLE		
DECK SURFACE REPAIR SPAN C		
	ESTIMATE	ACTUAL
CONCRETE FOR DECK REPAIR	0.0 CU.FT.	
CLASS II SURFACE PREPARATION	1.8 SQ. YDS.	
LMC MATERIALS	22.5 CU. YDS.	
PLACING & FINISHING LMC OVERLAY	425.7 SQ. YDS.	
SCARIFYING BRIDGE DECK	425.7 SQ. YDS.	
HYDRO-DEMOLITION OF BRIDGE DECK	425.7 SQ. YDS.	
GROOVING BRIDGE FLOORS	3565.2 SQ. FT.	
BRIDGE JOINT DEMOLITION	82.0 SQ. FT.	






PLAN OF SPAN C

PAYMENT FOR CLASS II SURFACE PREPARATION IS BASED ON THE SQUARE FEET OF ADDITIONAL DEMOLITION REQUIRED FOLLOWING INITIAL HYDRO-DEMOLITION OF THE BRIDGE DECK, SEE SPECIAL PROVISIONS

REPAIR LOCATIONS AND ESTIMATED QUANTITIES ARE BASED ON THE BEST INFORMATION AVAILABLE. IF ADDITIONAL REPAIRS NOT SHOWN ON THE DRAWINGS ARE DEEMED NECESSARY BY THE ENGINEER, THE ENGINEER WILL NOTE ON THE DRAWING THE APPROXIMATE LOCATIONS AND DESCRIPTION REPAIR QUANTITIES INTO THE AS-BUILT REPAIR QUANTITY TABLE.

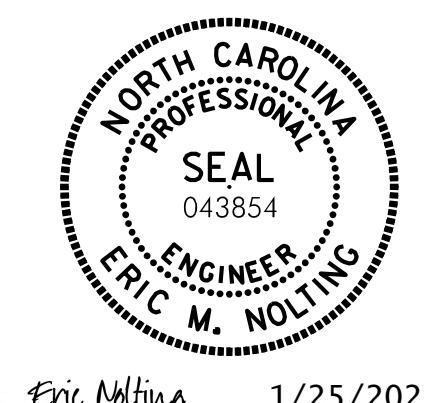
FOR SECTION A-A AND B-B, SEE "JOINT DETAILS" SHEET.

AFTER INITIAL HYDRO-DEMOLITION, BRIDGE DECK SHALL BE CLEANED WELL ENOUGH FOR IDENTIFICATION OF CLASS II SURFACE PREPARATION AREAS NOT SUFFICIENTLY REMOVED BY INITIAL HYDRO-DEMOLITION. A SECONDARY PASS WITH HYDRO-DEMOLITION SHALL BE USED IN THE CLASS II SURFACE PREPARATION AREAS TO REMOVE CONCRETE BRIDGE DECK TO THE REQUIRED CLASS II SURFACE PREPARATION DEPTH AND TO REMOVE DETERIORATED CONCRETE. IF THE SECONDARY HYDRO-DEMOLITION DOES NOT REMOVE PATCHES OR DETERIORATED MATERIAL TO THE REQUIRED DEPTH, COMPLETE REMOVAL IN CLASS II SURFACE PREPARATION AREAS WITH HAND TOOLS. ADDITIONAL HYDRO-DEMOLITION USED TO ACHIEVE CLASS II SURFACE PREPARATION DEPTH AND ADDITIONAL REMOVAL BY HAND TOOLS, IF NECESSARY, WILL BE PAID FOR AS CLASS II SURFACE PREPARATION.

-  SCARIFYING BRIDGE DECK
-  CLASS II SURFACE PREPARATION
-  BRIDGE JOINT DEMOLITION

PROJECT NO. B-3186/B-5898  
HAYWOOD COUNTY  
 STATION: 68+65.75± -L\_RT-

SHEET 4 OF 6



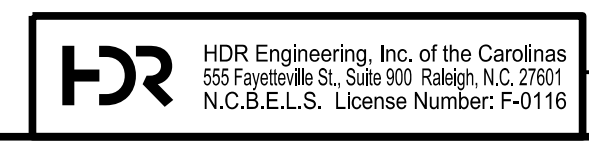
STATE OF NORTH CAROLINA  
 DEPARTMENT OF TRANSPORTATION  
 RALEIGH

**OVERLAY  
 DECK SURFACE REPAIR  
 SPAN C**

REVISIONS						SHEET NO. S03R-54
NO.	BY:	DATE:	NO.	BY:	DATE:	
1	--	--	3	--	--	TOTAL SHEETS 61
2	--	--	4	--	--	

PLOT DRIVER: NCDOT\_STRUCTURES\_DEFAULT\_PLOTTER.plt PENTABLE: NCDOT\_STRUCTURES\_DEFAULT\_PEN.tbl  
 USER: PPETERSO DATE: 1/24/2022 TIME: 2:47:16 PM  
 FILE: ... \404.265.85898B3186.SMU.DSR\_054\_430107.dgn

DES BY: <u>G. MYERS</u>	DATE: <u>08/21</u>	DWG BY: <u>F. CORDOVA</u>	DATE: <u>08/21</u>
DES CHK: <u>S. NIFONG</u>	DATE: <u>08/21</u>	CHK BY: <u>S. NIFONG</u>	DATE: <u>08/21</u>



Eric Nolting 1/25/2022  
 DOCUMENT NOT CONSIDERED FINAL  
 UNLESS ALL SIGNATURES COMPLETED