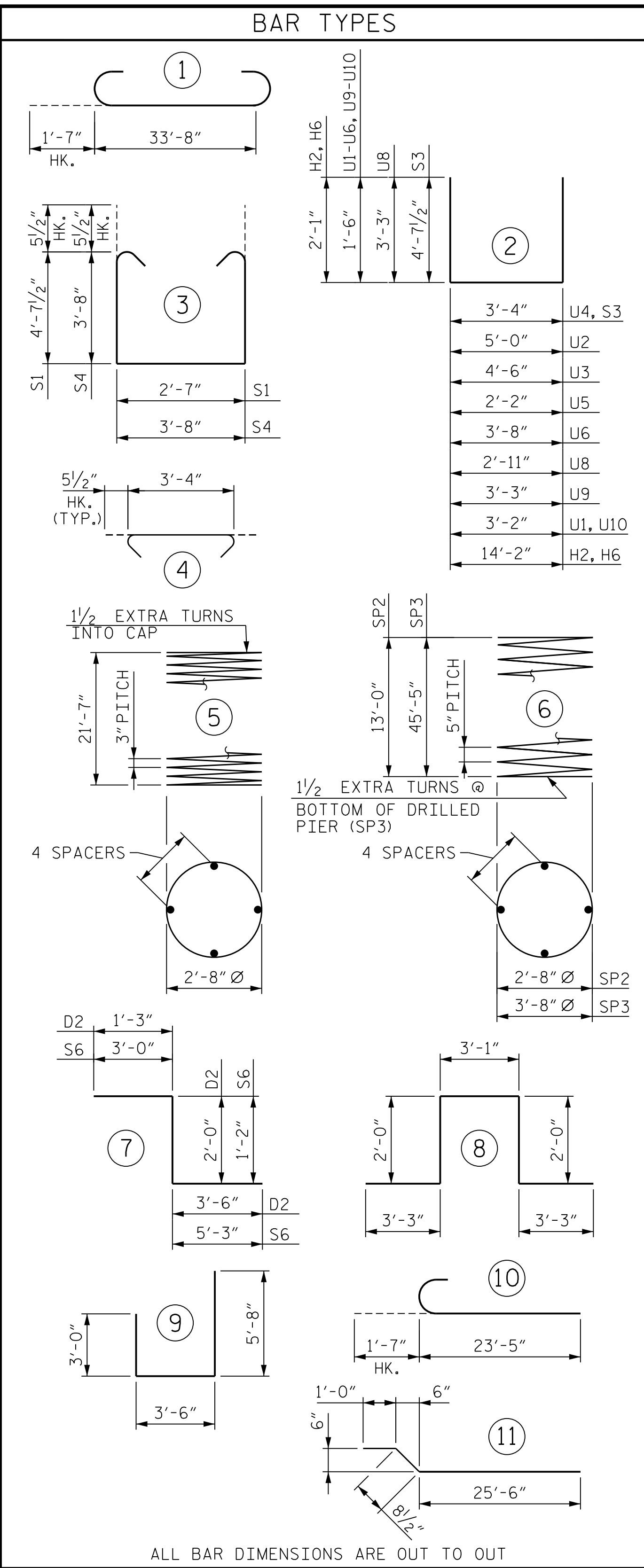
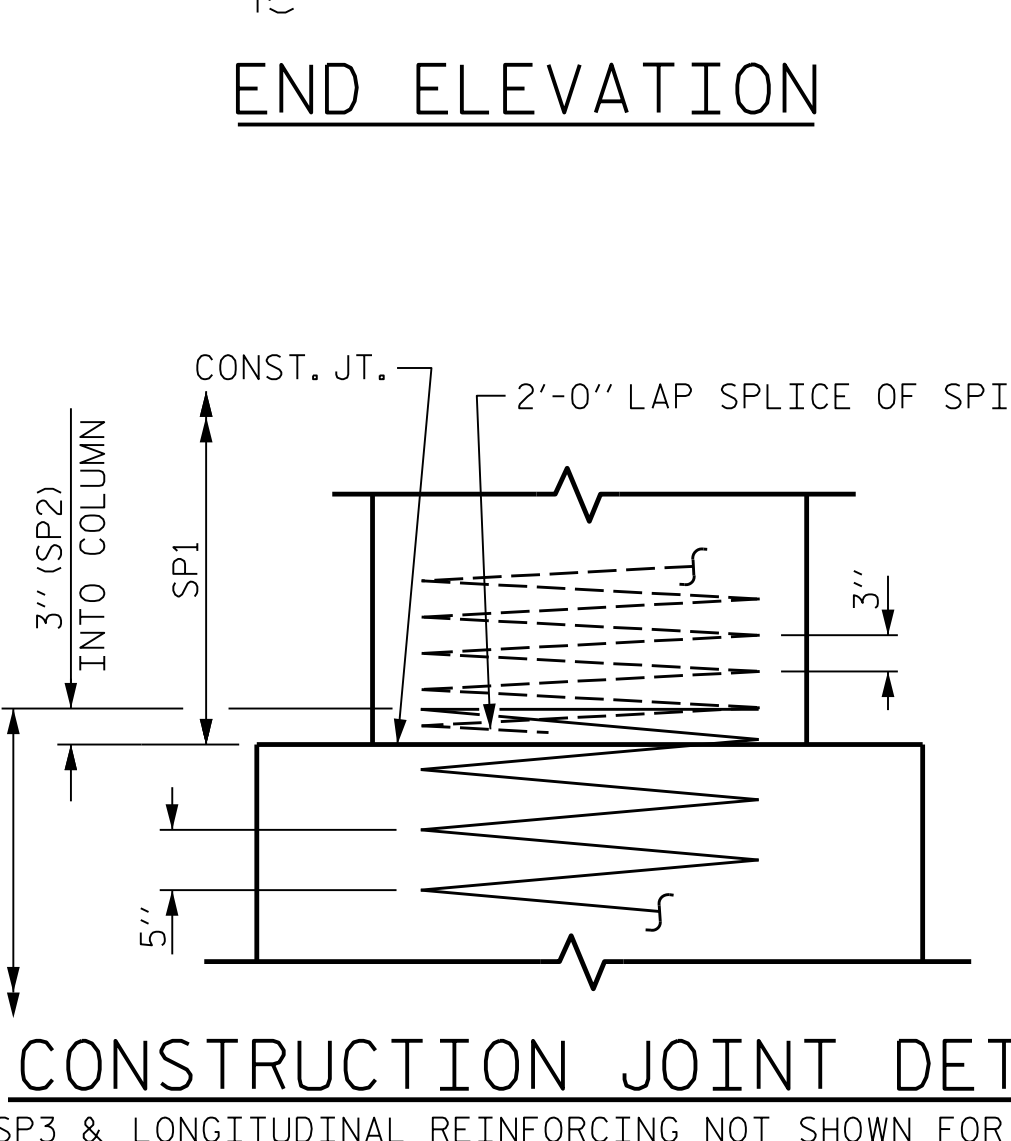
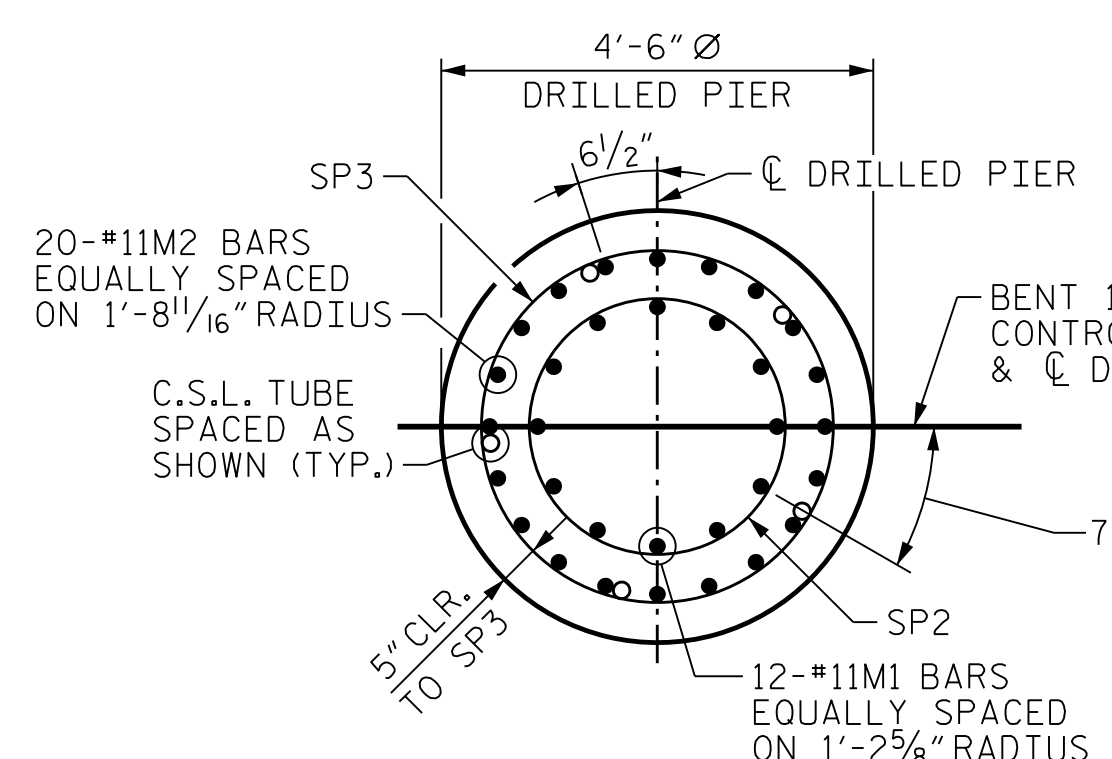
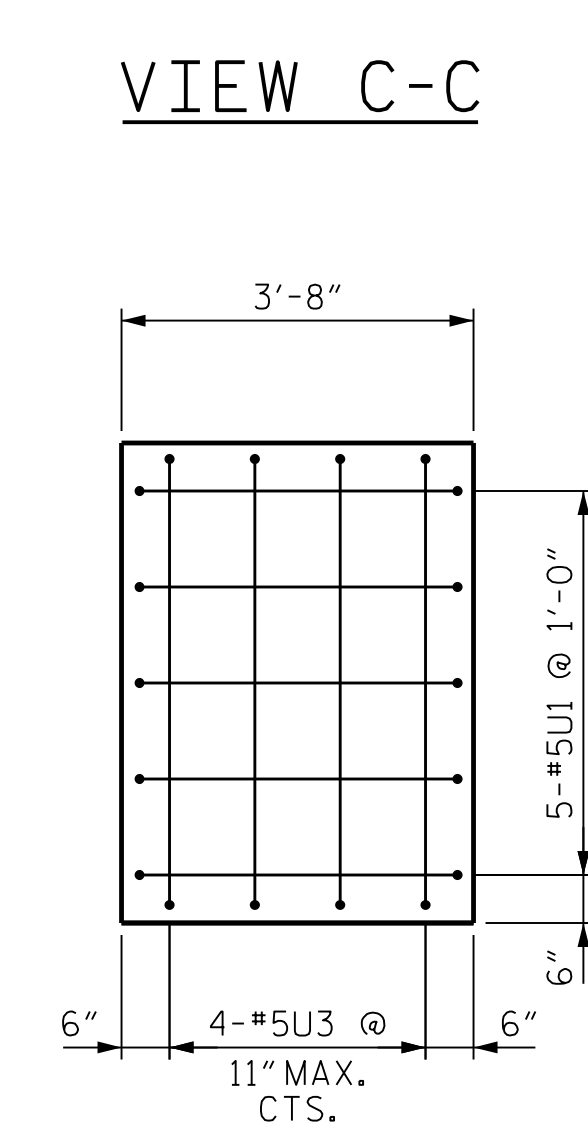
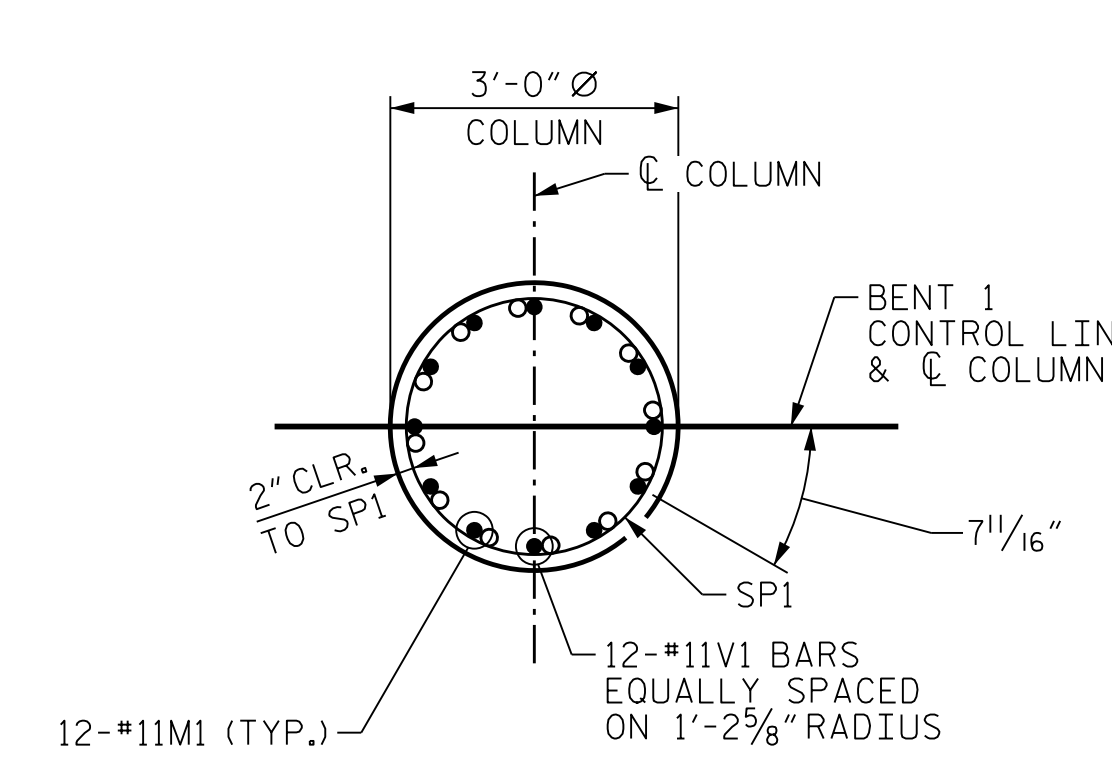
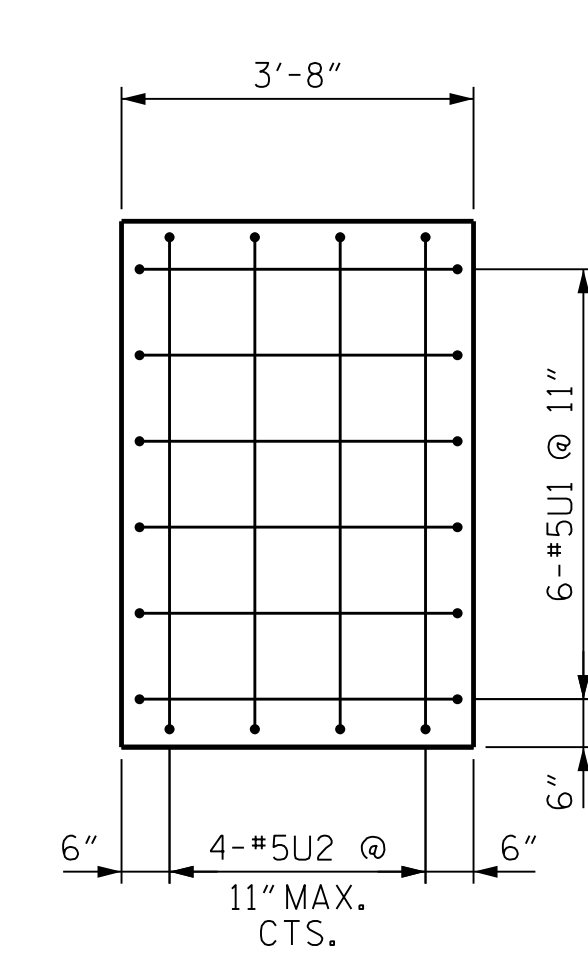
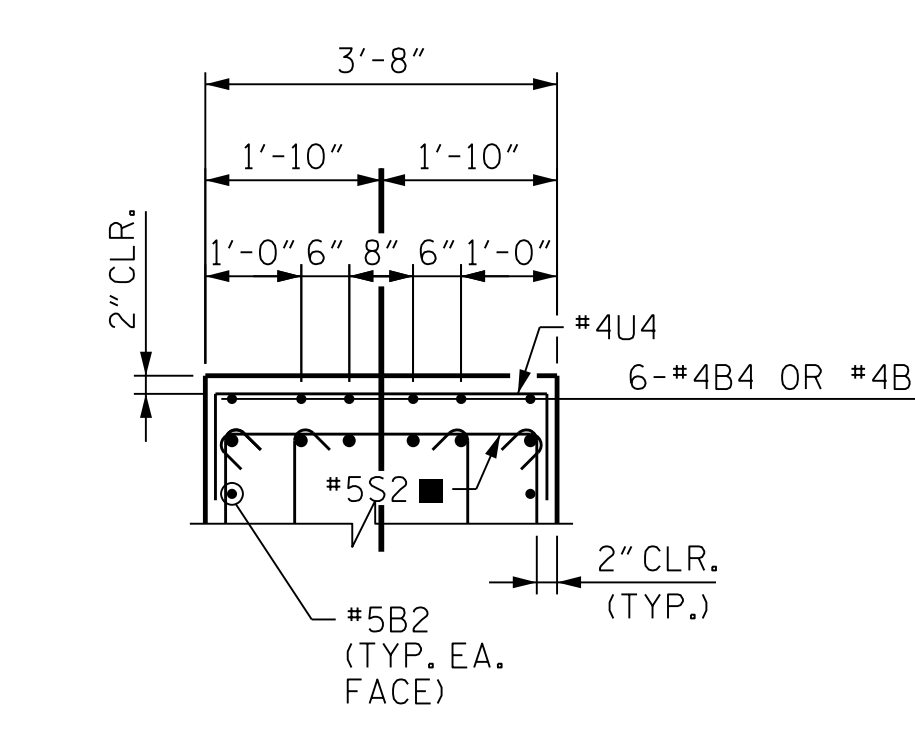
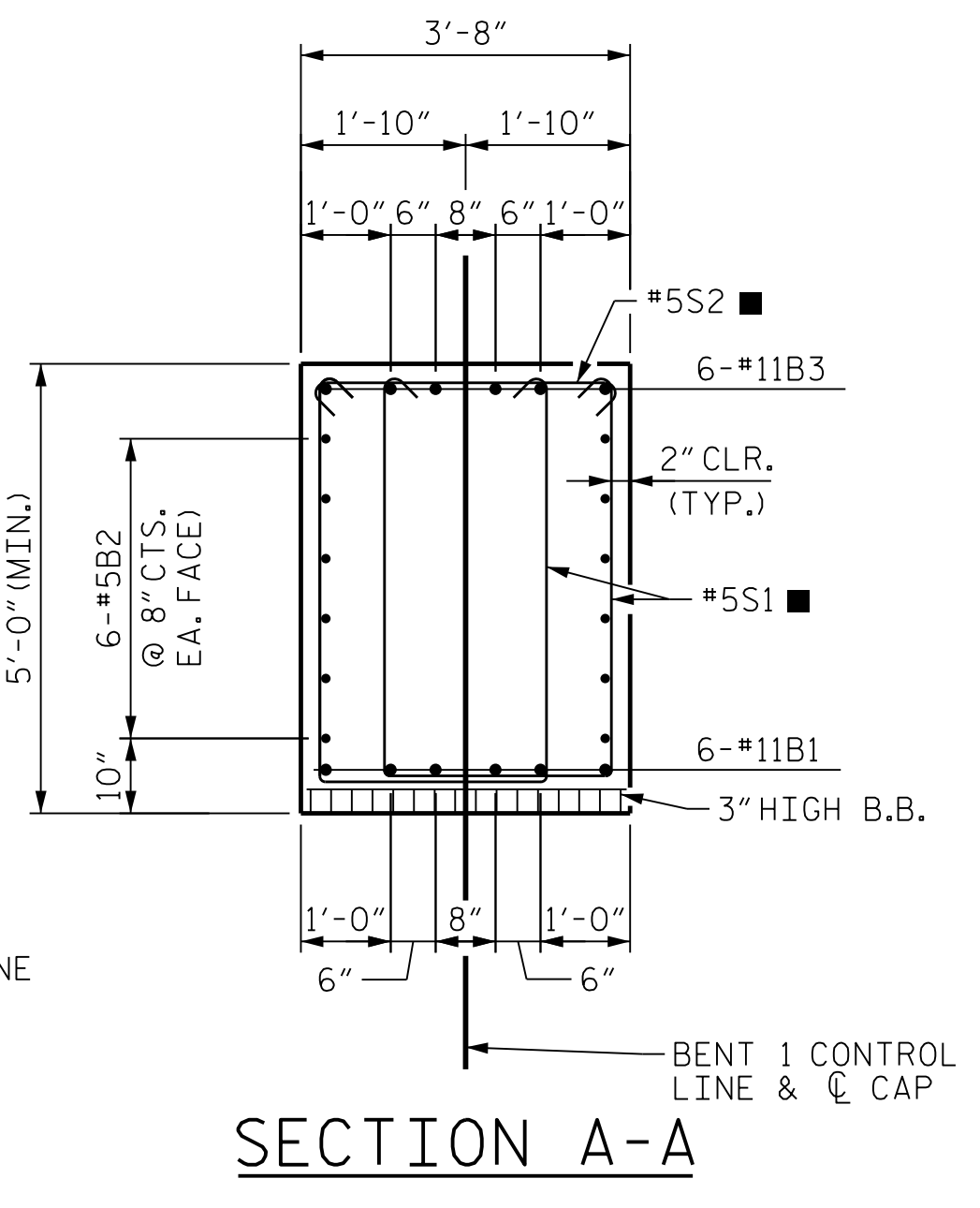
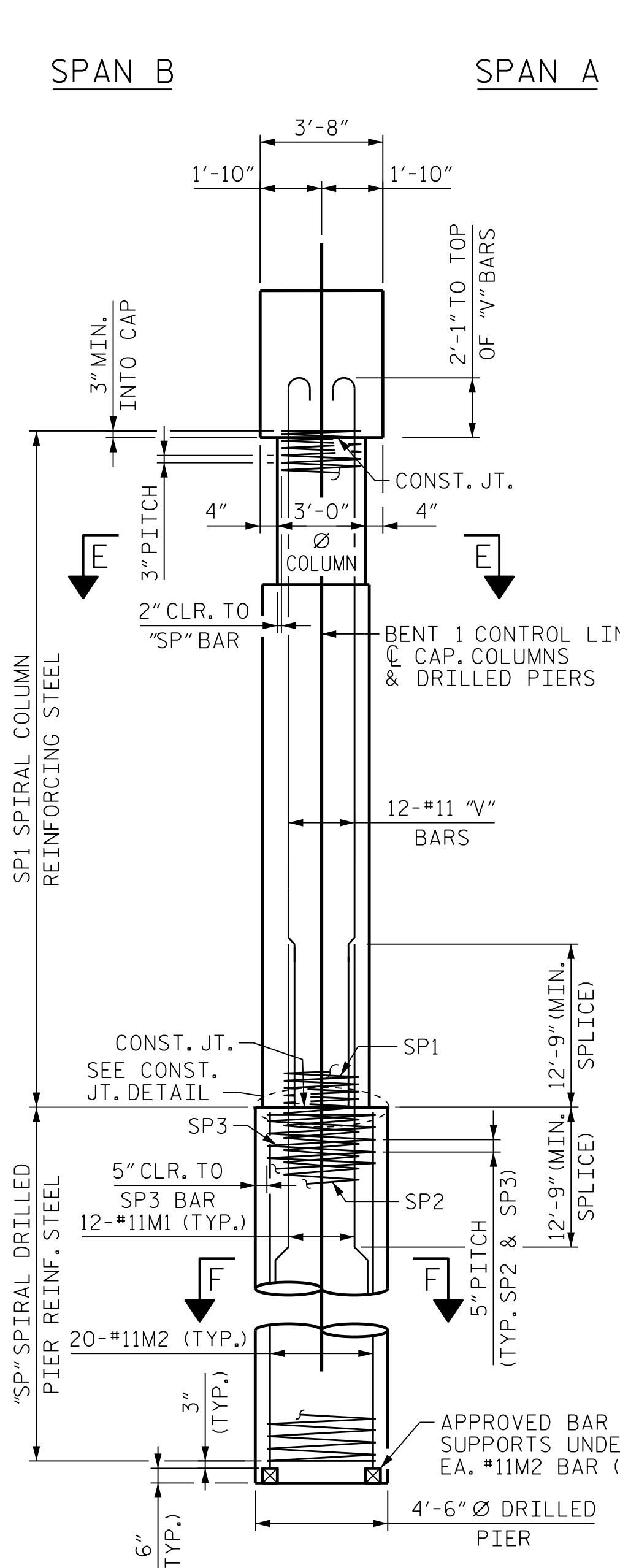


PLOT DRIVER: NCDOT STRUCTURES DEFAULT PLOTTER.plt PENTABLE: NCDOT STRUCTURES DEFAULT PEN.tbl
USER: PETERSON DATE: 1/24/2022 TIME: 2:42:47 PM
FILE: ... \404.185.B58983186.SMU.B1.038_430107.dgn



BILL OF MATERIAL

BENT 1									
BAR NO.	SIZE	TYPE	LENGTH	WEIGHT	BAR NO.	SIZE	TYPE	LENGTH	WEIGHT
B1	#6	STR	33'-8"	1074	U1	#5	2	6'-2"	71
B2	#5	STR	33'-8"	422	U2	#5	2	8'-0"	34
B3	#11	1	36'-10"	1175	U3	#5	2	7'-6"	32
B4	#4	STR	12'-3"	50	U4	#4	2	6'-4"	199
B5	#4	STR	5'-0"	21	U5	#5	2	5'-2"	388
					U6	#5	2	6'-8"	28
D1	#5	STR	6'-6"	123	U7	#5	9	12'-2"	267
D2	#5	7	6'-9"	127	U8	#5	2	9'-5"	177
D3	#5	STR	4'-3"	133	U9	#5	2	6'-3"	27
					U10	#5	2	6'-2"	116
H1	#5	STR	40'-8"	849					
H2	#5	2	18'-4"	651	V1	#11	10	25'-0"	3188
H3	#6	STR	2'-2"	10	V2	#5	STR	19'-1"	1394
H4	#6	STR	40'-8"	62	V3	#5	STR	4'-5"	157
H5	#6	STR	14'-2"	43	V4	#5	STR	11'-6"	408
H6	#6	2	18'-4"	56	V5	#5	STR	16'-7"	1661
H7	#5	STR	39'-2"	1389					
H8	#5	STR	5'-3"	6					
H9	#6	STR	39'-2"	177					
M1	#11	11	27'-3"	3475					
M2	#11	STR	48'-4"	10272					
S1	#5	3	12'-9"	931					
S2	#5	4	4'-4"	159					
S3	#5	2	12'-7"	79					
S4	#5	3	11'-11"	784					
S5	#5	8	13'-7"	426					
S6	#5	7	9'-5"	177					

REINFORCING STEEL LBS. 30818

BAR NO.	SIZE	TYPE	LENGTH	WEIGHT
SP1	#5	5	726'-1"	971
SP2	#5	6	263'-3"	550
SP3	#5	6	1261'-4"	2632

SPIRAL REINF. STEEL LBS. 4153

CLASS A CONCRETE
POUR 2
(COLUMNS & CRASHWALL) CU. YDS. 70.7
POUR 3 (CAP) CU. YDS. 24.1

CRASHWALL AT EXISTING BENT CU. YDS. 73.9
TOTAL CLASS A CONCRETE CU. YDS. 168.7

DRILLED PIER CONCRETE
POUR 1 (DRILLED PIERS) CU. YDS. 54.2

CSL TUBES LIN. FT. 480.0

4'-6" DIA. DRILLED PIERS IN SOIL LIN. FT. 83.0

4'-6" DIA. DRILLED PIERS NOT IN SOIL LIN. FT. 9.0

* THE SP1 SPIRAL REINFORCING STEEL SHALL BE W20 OR D-20 COLD DRAWN WIRE OR #4 PLAIN OR DEFORMED BAR.
** THE SP2 AND SP3 SPIRAL REINFORCING STEEL SHALL BE W31 OR D-31 COLD DRAWN WIRE OR #5 PLAIN OR DEFORMED BAR.

PROJECT NO. B-3186/B-5898
HAYWOOD COUNTY
STATION: 68+65.75 ± -L-RT-

SHEET 4 OF 4

STATE OF NORTH CAROLINA
DEPARTMENT OF TRANSPORTATION
RALEIGH

**SUBSTRUCTURE
BENT 1
SECTIONS AND DETAILS**



Eric M. Nolting 1/25/2022

DES BY: D. MAST	DATE: 07/21	DWG BY: D. CARTER	DATE: 07/21
DES CHK: M. NEHEISEL	DATE: 07/21	CHK BY: E. NOLTING	DATE: 08/21

HDR HDR Engineering, Inc. of the Carolinas
555 Fayetteville St., Suite 900 Raleigh, N.C. 27601
N.C.B.E.L.S. License Number: P-0116

DOCUMENT NOT CONSIDERED FINAL
UNLESS ALL SIGNATURES COMPLETED

REVISIONS					
NO.	BY:	DATE:	NO.	BY:	DATE:
1	--	--	3	--	--
2	--	--	4	--	--

SHEET NO. S03R-38
TOTAL SHEETS 61