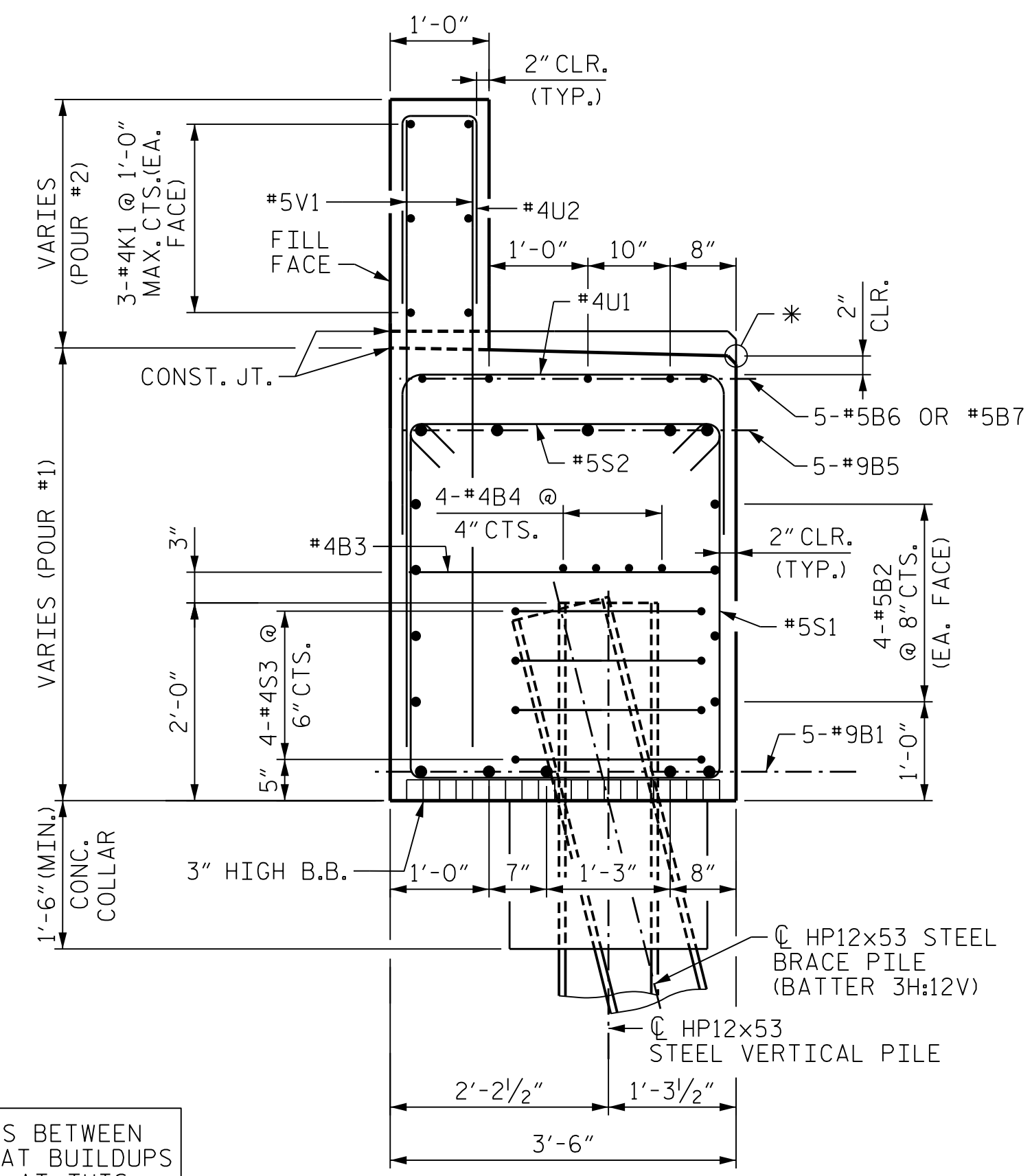
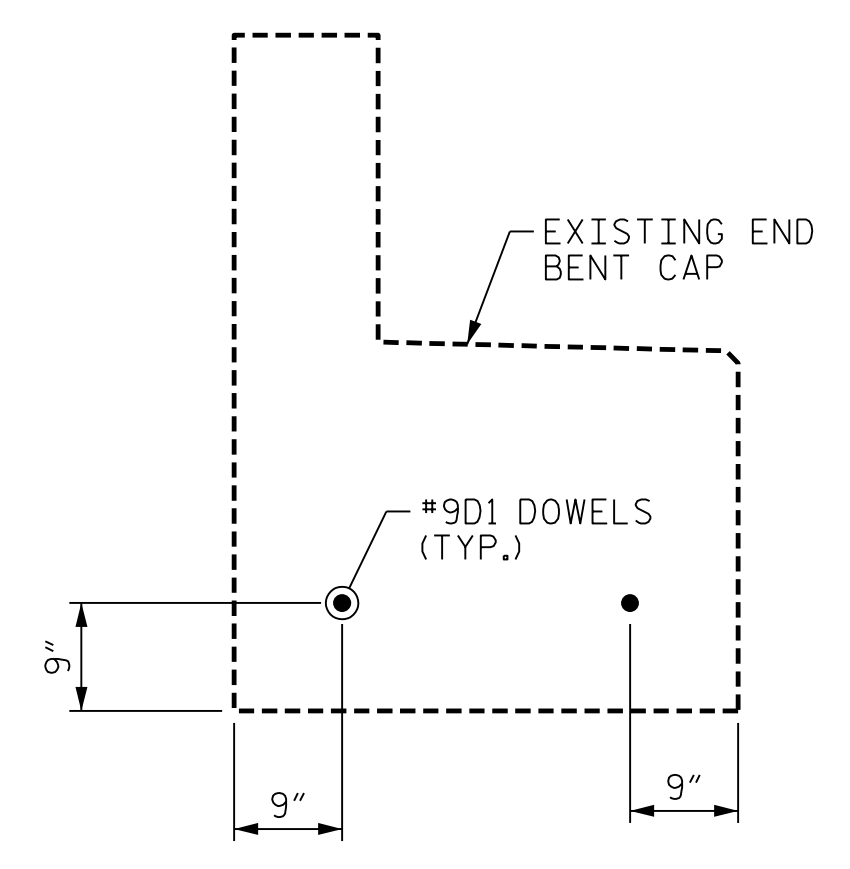


SECTION A-A

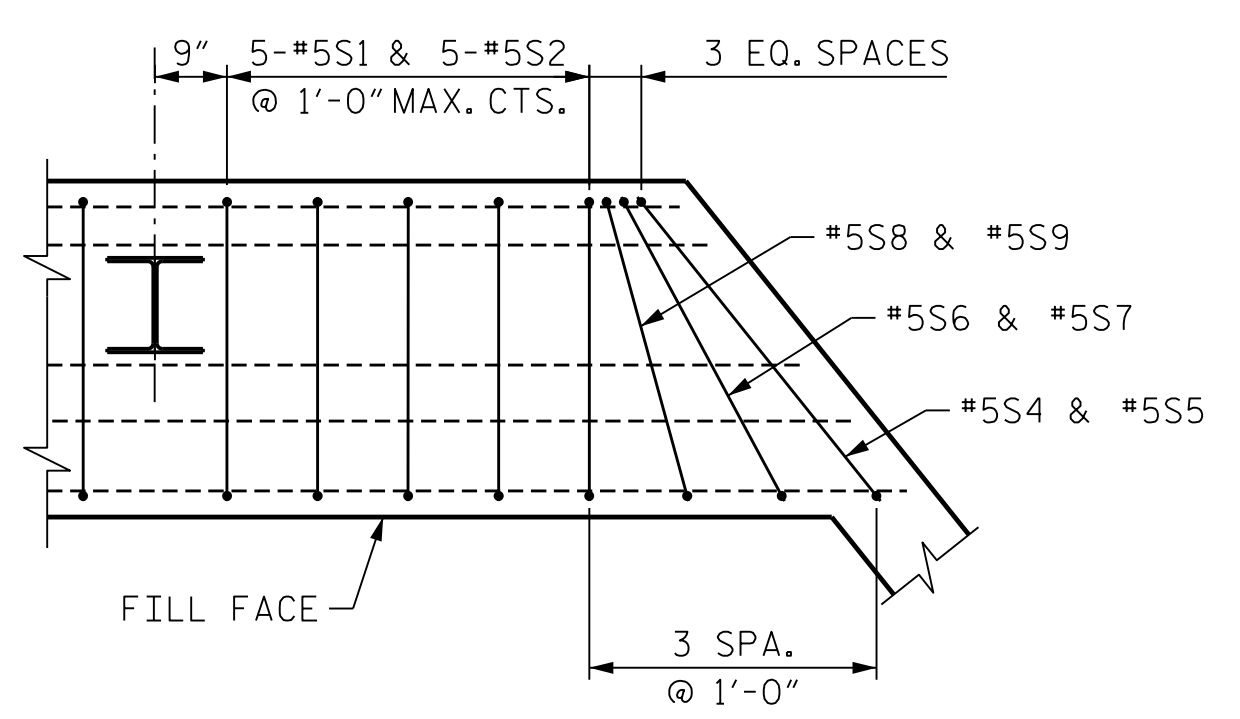


SECTION B-B

\* ELEVATIONS BETWEEN BRIDGE SEAT BUILDUPS ARE SHOWN AT THIS POINT



VIEW E-E



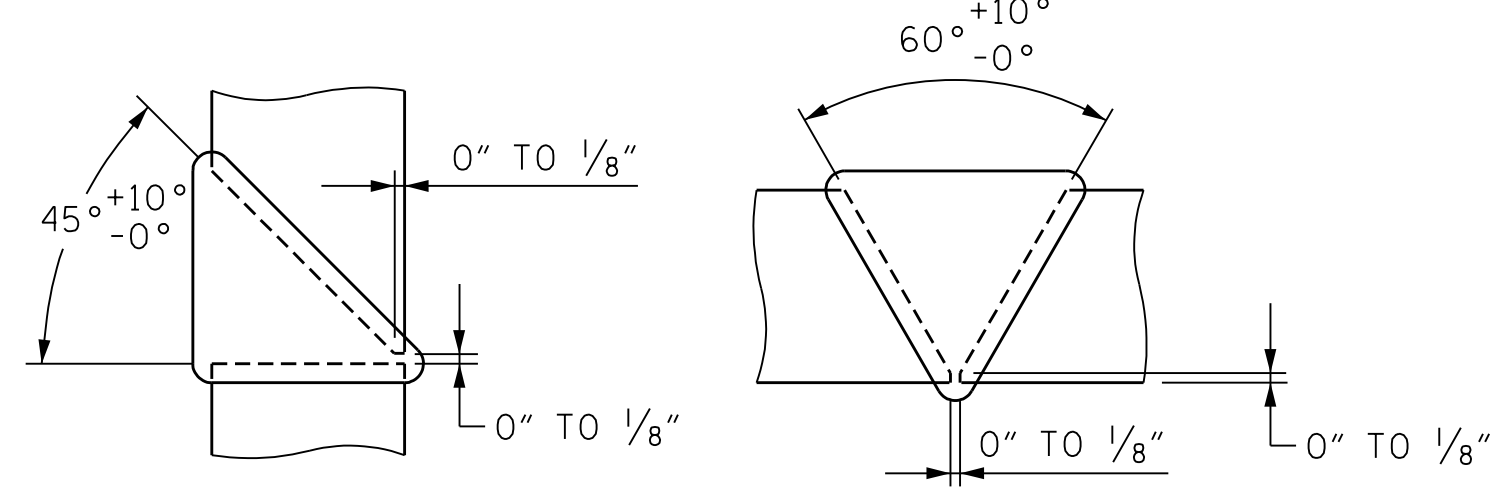
DETAIL "B"



\* PILE VERTICAL

\* PILE HORIZONTAL OR VERTICAL

\* POSITION OF PILE DURING WELDING

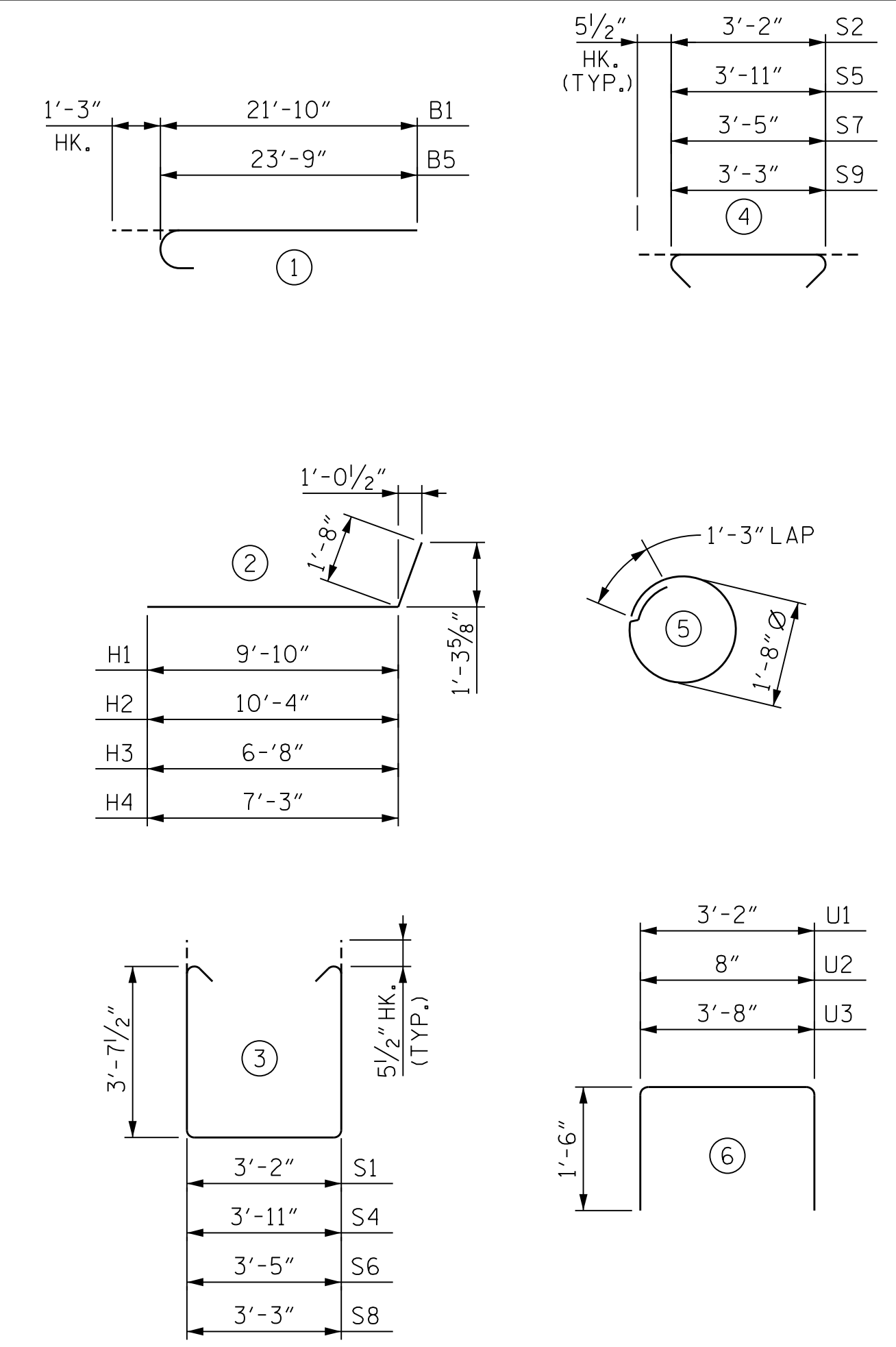


DETAIL "F"

DETAIL "G"

PILE SPLICE DETAILS

BAR TYPES



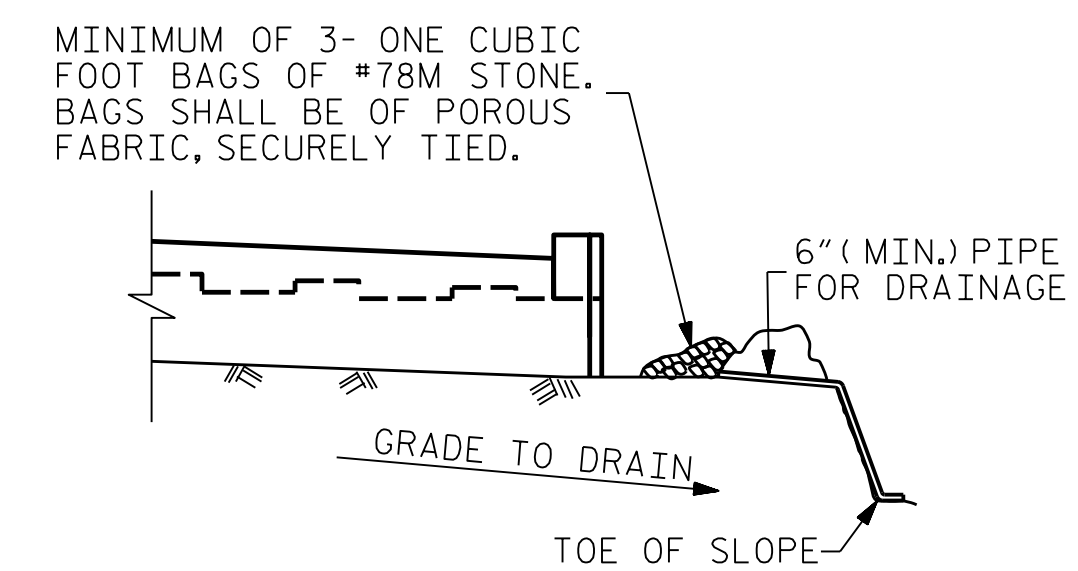
ALL BAR DIMENSIONS ARE OUT TO OUT

BILL OF MATERIAL

END BENT 1					
BAR	NO.	SIZE	TYPE	LENGTH	WEIGHT
B1	10	#9		23'-1"	785
B2	16	#5	STR	21'-4"	356
B3	10	#4	STR	3'-2"	21
B4	8	#4	STR	21'-0"	112
B5	10	#9		23'-9"	808
B6	5	#5	STR	12'-3"	64
B7	5	#5	STR	2'-2"	11
K1	12	#4	STR	21'-0"	168
H1	5	#4		11'-6"	38
H2	5	#4		12'-0"	40
H3	5	#4		8'-4"	28
H4	5	#4		8'-11"	30
H5	4	#4	STR	3'-4"	9
V1	73	#5	STR	5'-10"	444
V2	24	#4	STR	7'-2"	115
S1	37	#5		11'-4"	437
S2	37	#5		4'-1"	158
S3	16	#4		6'-6"	69
S4	1	#5		12'-1"	13
S5	1	#5		4'-10"	5
S6	1	#5		11'-7"	12
S7	1	#5		4'-4"	5
S8	1	#5		11'-5"	12
S9	1	#5		4'-2"	4
U1	14	#5		6'-2"	90
U2	36	#4		3'-8"	88
U3	4	#5		6'-8"	28
D1	2	#9	STR	4'-10"	33

REINFORCING STEEL		LBS.	3983
CLASS A CONCRETE			
POUR #1 (COLLARS, CAP, LOWER PART OF WING)		CU. YDS.	22.2
POUR #2 (BACKWALL & UPPER PART OF WING)		CU. YDS.	3.9
TOTAL		CU. YDS.	26.1
HP 12x53 STEEL PILES ▲		NO.	4
		LIN. FT.	240
STEEL H-PILE POINTS		NO.	4

▲ PILE LENGTHS ARE BASED ON ESTIMATED TIP ELEVATIONS

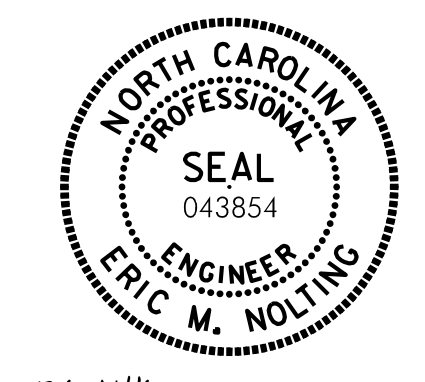


BAGGED STONE AND PIPE SHALL BE PLACED IMMEDIATELY AFTER COMPLETION OF END BENT EXCAVATION. PIPE MAY BE EITHER CONCRETE, CORRUGATED STEEL, CORRUGATED ALUMINUM ALLOY, OR CORRUGATED PLASTIC. PERFORATED PIPE WILL NOT BE ALLOWED.

BAGGED STONE SHALL REMAIN IN PLACE UNTIL THE ENGINEER DIRECTS THAT IT BE REMOVED. THE CONTRACTOR SHALL REMOVE AND DISPOSE OF SILT ACCUMULATIONS AT BAGGED STONE WHEN SO DIRECTED BY THE ENGINEER. BAGS SHALL BE REMOVED AND REPLACED WHENEVER THE ENGINEER DETERMINES THAT THEY HAVE DETERIORATED AND LOST THEIR EFFECTIVENESS.

NO SEPARATE PAYMENT WILL BE MADE FOR THIS WORK AND THE ENTIRE COST OF THIS WORK SHALL BE INCLUDED IN THE UNIT CONTRACT PRICE BID FOR THE SEVERAL PAY ITEMS.

TEMPORARY DRAINAGE AT END BENT



Eric M. Nolting 1/25/2022

PROJECT NO. B-3186/B-5898  
HAYWOOD COUNTY  
STATION: 68+65.75 ± -L-RT-

SHEET 3 OF 3

STATE OF NORTH CAROLINA  
DEPARTMENT OF TRANSPORTATION  
RALEIGH

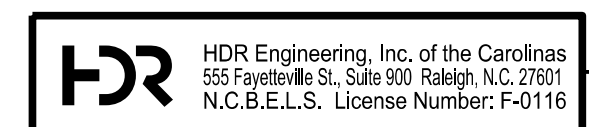
SUBSTRUCTURE  
END BENT 1  
SECTIONS AND DETAILS

REVISIONS					
NO.	BY:	DATE:	NO.	BY:	DATE:
1	--	--	3	--	--
2	--	--	4	--	--

SHEET NO.	S03R-34
TOTAL SHEETS	61

PLOT DRIVER: NCDOT STRUCTURES DEFAULT PLOTTER.plt  
 USER: PPETERSO DATE: 1/24/2022 TIME: 2:40:50 PM  
 FILE: ... \404.165.B5898B3186.SMU.E1.034.430107.dgn

DES BY: B. ROGERS	DATE: 05/21	DWG BY: B. PETERSON	DATE: 05/21
DES CHK: F. CORDOVA	DATE: 06/21	CHK BY: F. CORDOVA	DATE: 06/21



DOCUMENT NOT CONSIDERED FINAL UNLESS ALL SIGNATURES COMPLETED