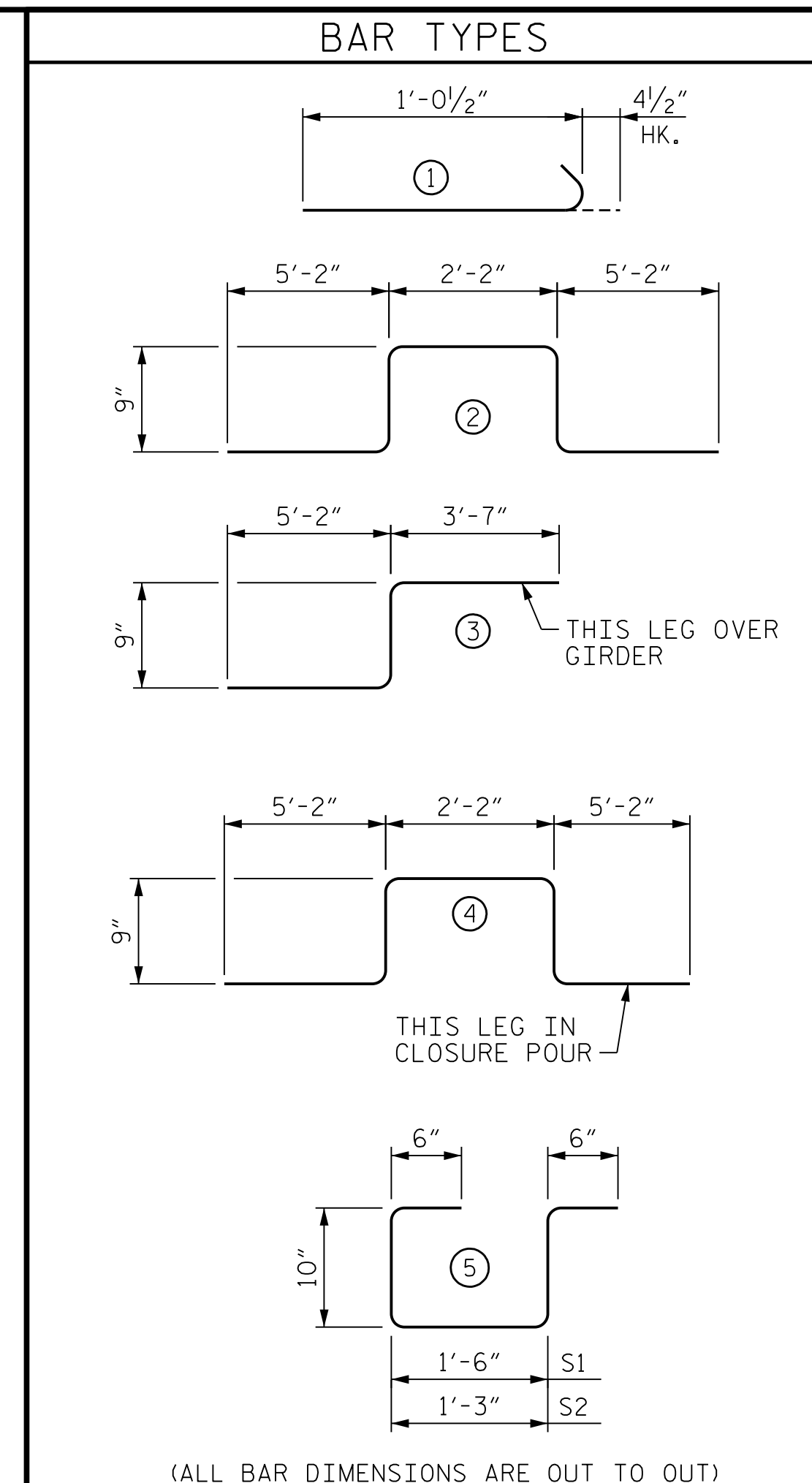
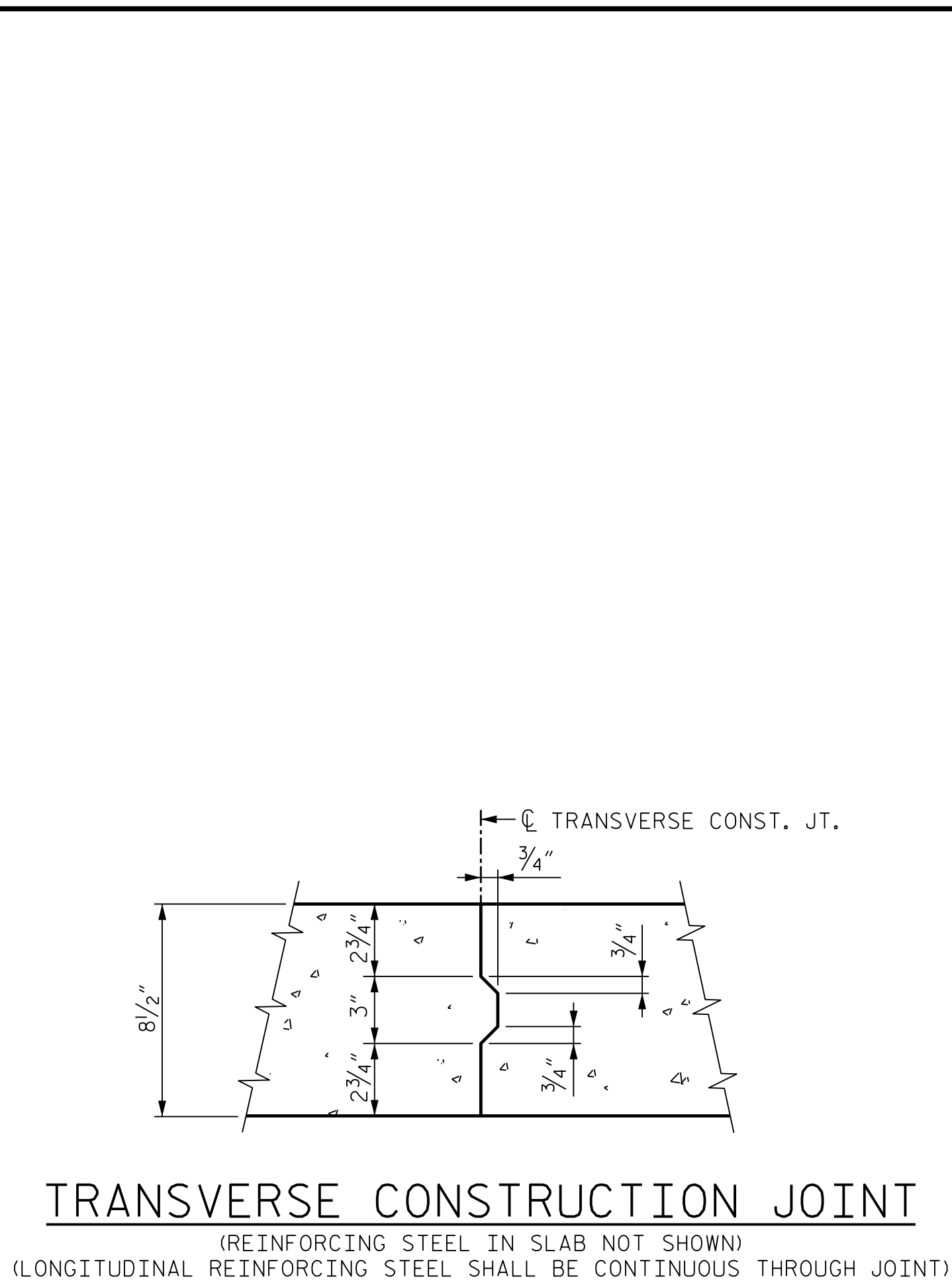
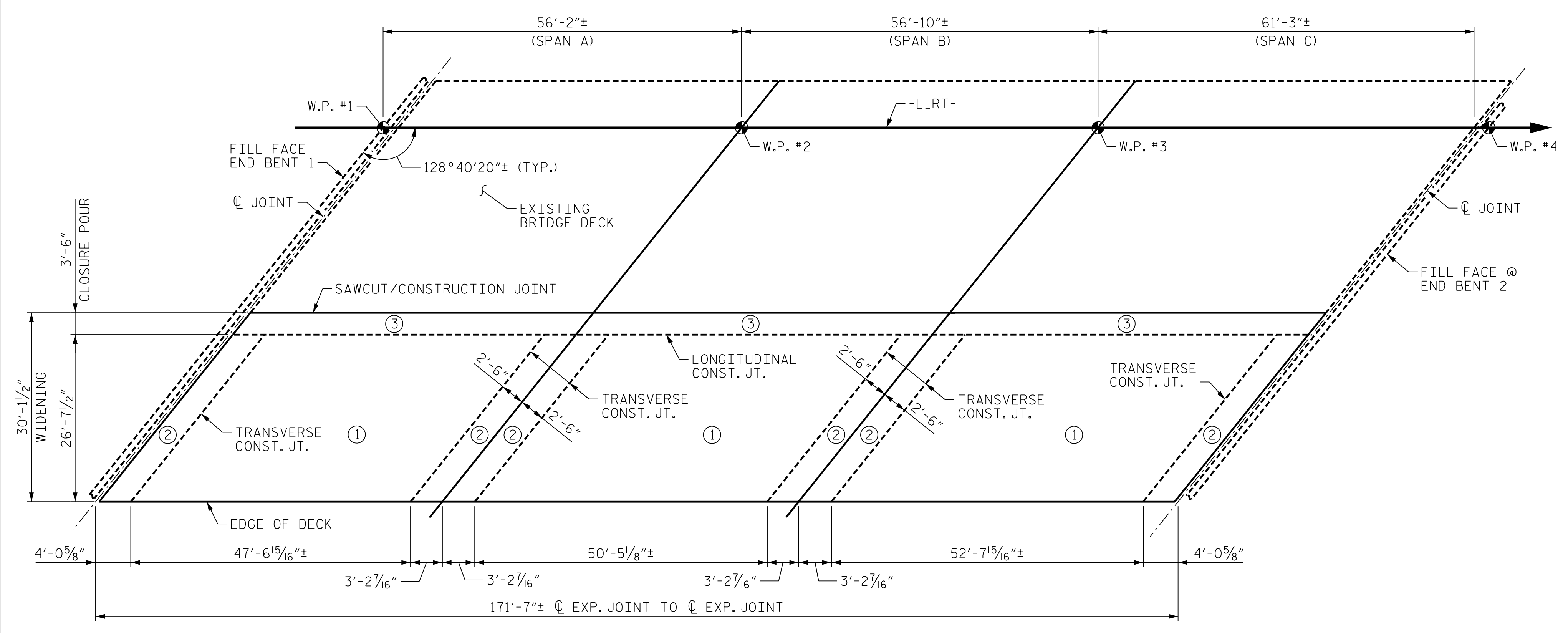


PLOT DRIVER: NCDOT STRUCTURES DEFAULT PLOTTER.plt PENTABLE: NCDOT STRUCTURES DEFAULT PEN.tbl  
 USER: PETERSON DATE: 1/24/2022 TIME: 2:40:01 PM  
 FILE: ... \404.145.B58983186.SMU.BM.030.430107.dgn

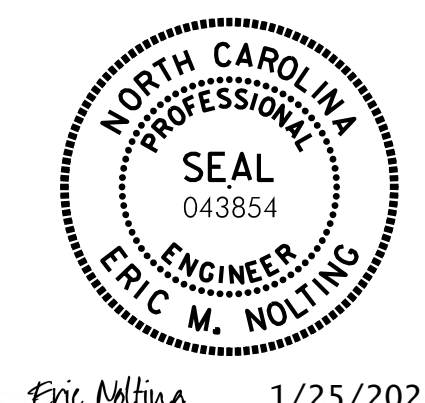


BILL OF MATERIAL											
SPAN A											
BAR	NO.	SIZE	TYPE	LENGTH	WEIGHT	BAR	NO.	SIZE	TYPE	LENGTH	WEIGHT
* A1	53	#6	STR	26'-3"	2090	A110	2	#6	STR	19'-8"	60
* A2	2	#6	STR	25'-11"	78	A111	2	#6	STR	18'-11"	57
* A3	2	#6	STR	25'-2"	76	A112	2	#6	STR	18'-1"	55
* A4	2	#6	STR	24'-4"	74	A113	2	#6	STR	17'-4"	53
* A5	2	#6	STR	23'-7"	71	A114	2	#6	STR	16'-7"	50
* A6	2	#6	STR	22'-10"	69	A115	2	#6	STR	15'-9"	48
* A7	2	#6	STR	22'-0"	67	A116	2	#6	STR	15'-0"	46
* A8	2	#6	STR	21'-3"	64	A117	2	#6	STR	14'-2"	43
* A9	2	#6	STR	20'-5"	62	A118	2	#6	STR	13'-5"	41
* A10	2	#6	STR	19'-8"	60	A119	2	#6	STR	12'-8"	39
* A11	2	#6	STR	18'-11"	57	A120	2	#6	STR	11'-10"	36
* A12	2	#6	STR	18'-1"	55	A121	2	#6	STR	11'-1"	34
* A13	2	#6	STR	17'-4"	53	A122	2	#6	STR	10'-4"	32
* A14	2	#6	STR	16'-7"	50	A123	2	#6	STR	9'-6"	29
* A15	2	#6	STR	15'-9"	48	A124	2	#6	STR	8'-9"	27
* A16	2	#6	STR	15'-0"	46	A125	2	#6	STR	7'-11"	25
* A17	2	#6	STR	14'-2"	43	A126	2	#6	STR	7'-2"	22
* A18	2	#6	STR	13'-5"	41	A127	2	#6	STR	6'-5"	20
* A19	2	#6	STR	12'-8"	39	A128	2	#6	STR	5'-7"	18
* A20	2	#6	STR	11'-10"	36	A129	2	#6	STR	4'-10"	15
* A21	2	#6	STR	11'-1"	34	A130	2	#6	STR	4'-1"	13
* A22	2	#6	STR	10'-4"	32	A131	2	#6	STR	3'-4"	11
* A23	2	#6	STR	9'-6"	29						
* A24	2	#6	STR	8'-9"	27	* B1	44	#4	STR	28'-2"	828
* A25	2	#6	STR	7'-11"	25	B2	41	#5	STR	54'-3"	2320
* A26	2	#6	STR	7'-2"	22						
* A27	2	#6	STR	6'-5"	20	* D1	83	#6	STR	1'-7"	198
* A28	2	#6	STR	5'-7"	18	* D2	87	#6	STR	6'-4"	828
* A29	2	#6	STR	4'-10"	15	D101	83	#6	STR	1'-7"	198
* A30	2	#6	STR	4'-1"	13	D102	87	#6	STR	6'-0"	785
* A31	2	#6	STR	3'-4"	11						
* A32	3	#6	STR	12'-4"	56	* G1	2	#5	STR	33'-8"	71
						* G2	2	#5	STR	6'-11"	15
A101	53	#6	STR	26'-3"	2090						
A102	2	#6	STR	25'-11"	78	* J1	37	#4	1	1'-5"	36
A103	2	#6	STR	25'-2"	76						
A104	2	#6	STR	24'-4"	74	* K1	8	#5	2	14'-0"	117
A105	2	#6	STR	23'-7"	71	* K2	4	#5	4	14'-0"	59
A106	2	#6	STR	22'-10"	69	* K3	4	#5	3	9'-6"	40
A107	2	#6	STR	22'-0"	67						
A108	2	#6	STR	21'-3"	64	* S1	26	#4	5	4'-2"	73
A109	2	#6	STR	20'-5"	62	* S2	26	#4	5	3'-11"	69



\* DENOTES EPOXY COATED REINFORCING STEEL

PROJECT NO. B-3186/B-5898  
HAYWOOD COUNTY  
 STATION: 68+65.75 ± -L-RT-  
 SHEET 1 OF 2

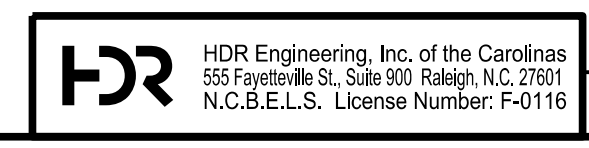


STATE OF NORTH CAROLINA  
 DEPARTMENT OF TRANSPORTATION  
 RALEIGH

**SUPERSTRUCTURE  
 BILL OF MATERIAL**

REVISIONS						SHEET NO.	
NO.	BY:	DATE:	NO.	BY:	DATE:	S03R-30	
1	--	--	3	--	--	TOTAL SHEETS	
2	--	--	4	--	--	61	

DES BY: F. CORDOVA DATE: 04/21 DWG BY: B. PETERSON DATE: 03/21  
 DES CHK: M. NEIHEISEL DATE: 07/21 CHK BY: M. NEIHEISEL DATE: 07/21



Eric Nolting 1/25/2022  
 DOCUMENT NOT CONSIDERED FINAL  
 UNLESS ALL SIGNATURES COMPLETED