

TEMPORARY DECK DRAIN AND DRAINAGE SYSTEM ELEVATION
(DIMENSIONS ALONG OUTSIDE EDGE OF DECK)

- AT THE CONTRACTOR'S OPTION, GUTTER DRAIN MAY BE SUPPORTED USING BLOCKING ON TOP OF THE OVERHANG FALSEWORK OR OTHER MEANS PROPOSED BY THE CONTRACTOR, SUBJECT TO REVIEW BY THE ENGINEER.
- ▲ 0.5% GUTTER DRAIN SLOPE

NOTES

FOR STRUCTURE DRAINAGE SYSTEM, SEE SPECIAL PROVISIONS.

THE SUPPORT BRACKETS SHALL CONFORM TO AASHTO M270 GRADE 36 STEEL OR APPROVED EQUAL AND SHALL BE GALVANIZED IN ACCORDANCE WITH THE STANDARD SPECIFICATIONS.

GUTTER DRAIN AND DECK DRAINS SHALL BE SHOP FABRICATED FROM GALVANIZED STEEL SHEET CONFORMING TO ASTM A653 STRUCTURAL STEEL (SS) GRADE 33 WITH G165 COATING.

GUTTER DRAIN SHALL BE SPLICED, WHEN NECESSARY, ONLY AT SUPPORT BRACKETS. GUTTER DRAIN SPLICES SHALL BE SEALED WITH JOINT SEALER.

VERTICAL SLOTS ARE PROVIDED IN THE SUPPORT BRACKETS TO ALLOW ADJUSTMENT OF THE GUTTER DRAIN GRADE. THE GUTTER DRAIN GRADE SHALL BE 0.5%.

THE JOINT SEALER MATERIAL SHALL CONFORM TO THE REQUIREMENTS OF TYPE B LOW MODULUS SILICONE SEALANT ACCORDING TO SECTION 1028 OF THE STANDARD SPECIFICATIONS.

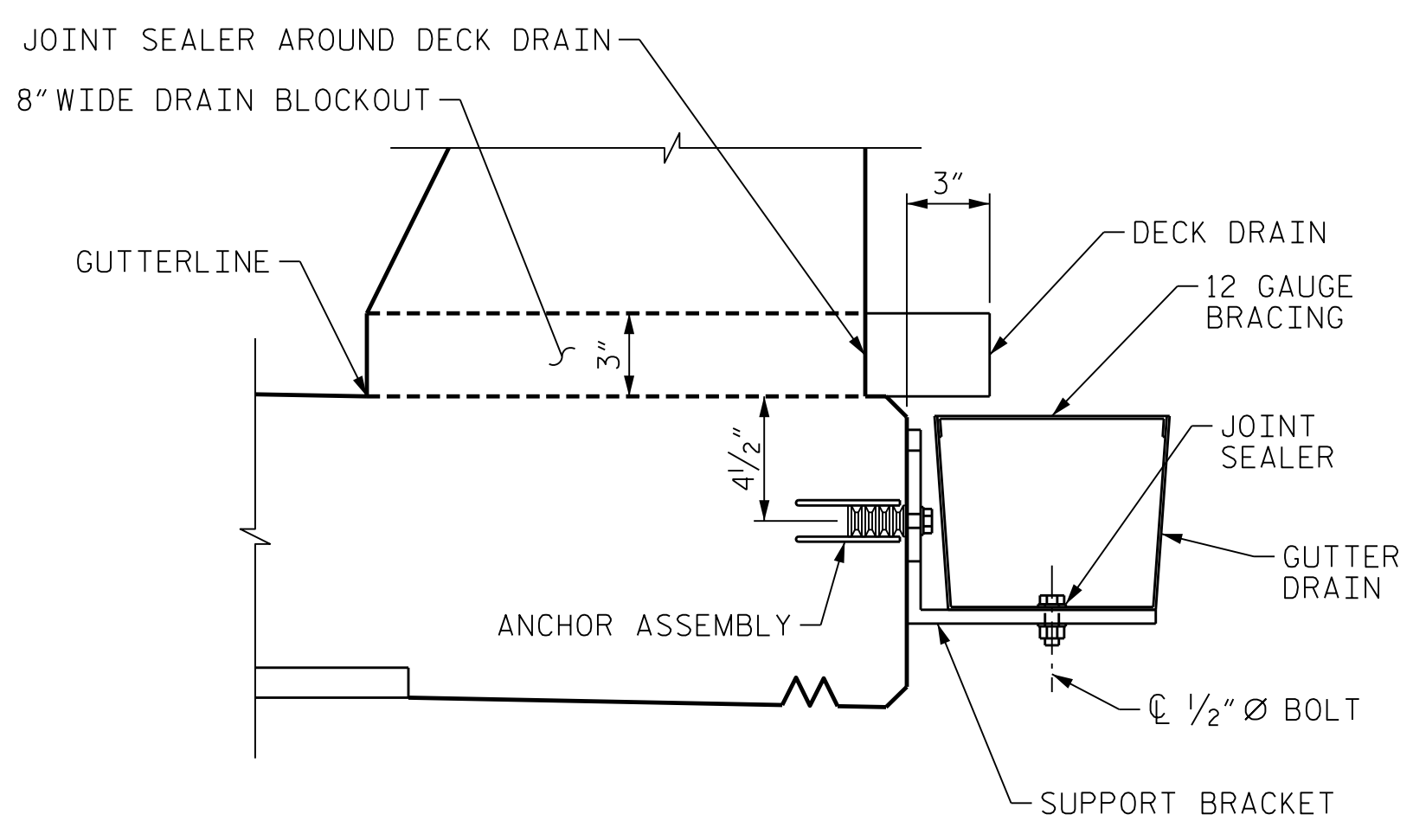
THE 1/2" Ø BOLTS SHALL CONFORM TO THE REQUIREMENTS OF ASTM A307 AND NUTS SHALL CONFORM TO THE REQUIREMENTS OF AASHTO M291. BOLTS, NUTS AND WASHERS SHALL BE GALVANIZED. AT THE CONTRACTOR'S OPTION, STAINLESS STEEL BOLTS, NUTS AND WASHERS MAY BE USED AS AN ALTERNATE. THEY SHALL CONFORM TO OR EXCEED THE MECHANICAL REQUIREMENTS OF ASTM A307. THE USE OF THIS ALTERNATE SHALL BE APPROVED BY THE ENGINEER.

THE STRUCTURAL CONCRETE ANCHOR ASSEMBLY SHALL CONSIST OF THE FOLLOWING COMPONENTS:

- FERRULES SHALL BE MADE FROM STEEL MEETING THE REQUIREMENTS OF AASHTO M169, GRADE 12L14 AND SHALL HAVE A MINIMUM LENGTH OF THREADS OF 1 1/4" FOR 1/2" Ø FERRULES.
- 2 - 1/2" Ø X 1 3/4" BOLTS WITH WASHERS.
- WIRE STRUT SHOWN IN THE CONCRETE ANCHOR ASSEMBLY DETAIL IS THE MINIMUM ALLOWABLE SIZE AND SHALL HAVE A MINIMUM TENSILE STRENGTH OF 100,000 PSI.
- THE ANCHOR ASSEMBLY SHALL BE GALVANIZED IN ACCORDANCE WITH THE STANDARD SPECIFICATIONS.

THE CONTRACTOR SHALL SUBMIT WORKING DRAWINGS FOR THE DRAINAGE SYSTEM, INCLUDING, BUT NOT LIMITED TO, ATTACHMENTS TO THE BRIDGE, DECK DRAINS, GUTTER DRAIN, DOWNSPOUTS AND SUPPORT BRACKETS.

DRAINAGE SYSTEM INSTALLATION AND REMOVAL SHALL BE PAID FOR AS A LUMP SUM UNDER THE PAY ITEM "STRUCTURE DRAINAGE SYSTEM."



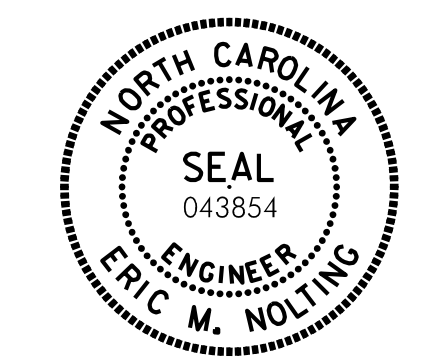
DECK DRAIN DETAIL

PROJECT NO. B-3186/B-5898
HAYWOOD COUNTY
STATION: 68+65.75± -L-RT-

SHEET 1 OF 2

STATE OF NORTH CAROLINA
DEPARTMENT OF TRANSPORTATION
RALEIGH

**SUPERSTRUCTURE
TEMPORARY DRAINAGE
SYSTEM DETAILS**



Eric Nolting 1/25/2022

REVISIONS						SHEET NO. 503R-28 TOTAL SHEETS 61
NO.	BY:	DATE:	NO.	BY:	DATE:	
1	--	--	3	--	--	
2	--	--	4	--	--	



DOCUMENT NOT CONSIDERED FINAL
UNLESS ALL SIGNATURES COMPLETED

PLOT DRIVER: NCDOT_STRUCTURE_DEFAULT_PLOTTER.plt
 USER: PPETERSO
 DATE: 1/24/2022
 TIME: 2:39:29 PM
 FILE: ... \404.135-B5898B3186-SMU-UT-028-430107.dgn

DES BY: <u>E. NOLTING</u>	DATE: <u>07/21</u>	DWG BY: <u>B. PETERSON</u>	DATE: <u>07/21</u>
DES CHK: <u>F. CORDOVA</u>	DATE: <u>07/21</u>	CHK BY: <u>F. CORDOVA</u>	DATE: <u>07/21</u>