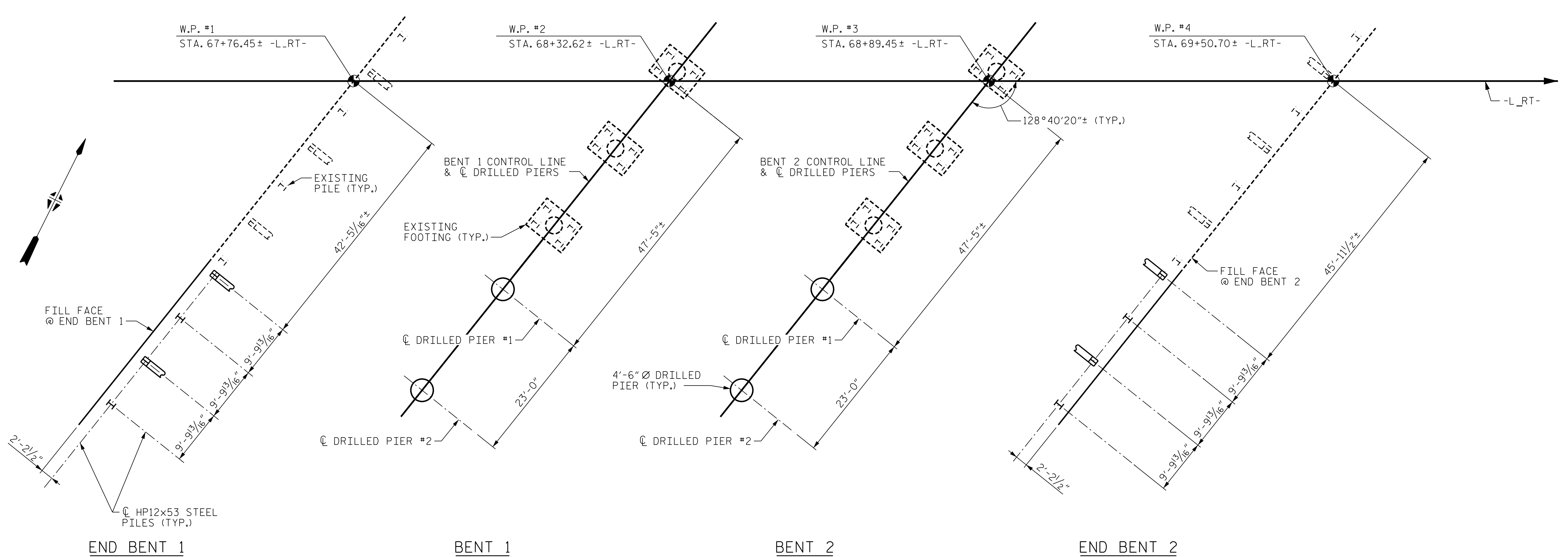


PLOT DRIVER: NCDOT STRUCTURES DEFAULT PLOTTER.plt
PENTABLE: NCDOT STRUCTURES DEFAULT PEN.tbl
USER: PETERSON DATE: 1/24/2022 TIME: 2:34:58 PM
FILE: ... \404_005_858983186_SMU_FL_002_430107.dgn



FOUNDATION LAYOUT

NOTES

FOR PILES, SEE SECTION 450 OF THE STANDARD SPECIFICATIONS.

PILES AT END BENTS NO.1 AND 2 ARE DESIGNED FOR A FACTORED RESISTANCE OF 125 TONS PER PILE.

DRIVE PILES AT END BENTS NO.1 AND 2 TO A REQUIRED DRIVING RESISTANCE OF 210 TONS PER PILE.

STEEL H-PILE POINTS ARE REQUIRED FOR STEEL H-PILES AT END BENTS NO.1 AND 2. FOR STEEL PILE POINTS, SEE SECTION 450 OF THE STANDARD SPECIFICATIONS.

TESTING PILES WITH THE PDA DURING DRIVING, RESTRIKING OR REDRIVING MAY BE REQUIRED. THE ENGINEER WILL DETERMINE THE NEED FOR PDA TESTING. FOR PDA TESTING, SEE SECTION 450 OF THE STANDARD SPECIFICATIONS (AND FOR PILE DRIVING CRITERIA, SEE PILE DRIVING CRITERIA PROVISION).

FOR DRILLED PIERS, SEE SECTION 411 OF THE STANDARD SPECIFICATIONS.

DRILLED PIERS AT BENTS NO.1 AND 2 ARE DESIGNED FOR FACTORED RESISTANCE OF 420 TONS PER PIER. CHECK FIELD CONDITIONS FOR THE REQUIRED TIP RESISTANCE OF 20 TSF.

INSTALL DRILLED PIERS AT BENT NO.1 AND 2 TO A TIP ELEVATION NO HIGHER THAN 2581 FT AND WITH THE REQUIRED TIP RESISTANCE AND PENETRATION OF AT LEAST 9 FT INTO WEATHERED ROCK/ROCK AS DEFINED BY ARTICLE 411-1 OF THE STANDARD SPECIFICATIONS.

SID INSPECTIONS MAY BE REQUIRED FOR DRILLED PIERS. THE ENGINEER WILL DETERMINE THE NEED FOR SID INSPECTIONS. FOR SID INSPECTIONS, SEE SECTION 411 OF THE STANDARD SPECIFICATIONS.

CSL TUBES ARE REQUIRED AND CSL TESTING MAY BE REQUIRED FOR DRILLED PIERS. THE ENGINEER WILL DETERMINE THE NEED FOR CSL TESTING. FOR CSL TESTING, SEE SECTION 411 OF THE STANDARD SPECIFICATIONS.

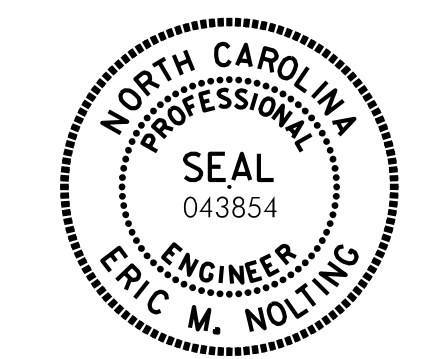
WEATHERED ROCK ELEVATIONS ARE ANTICIPATED TO BE AT 2583 FEET AT BENTS NO.1 AND 2. DRILLED PIER TIP ELEVATIONS ARE ANTICIPATED TO BE AT 2574 FEET AT BENTS NO.1 AND 2. THE CONTRACTOR CAN RAISE DRILLED PIER TIP ELEVATIONS IF WEATHERED ROCK IS ENCOUNTERED HIGHER THAN 2583 FEET AS LONG AS DRILLED PIERS PENETRATES AT LEAST 9 FEET OF WEATHERED ROCK/ROCK.

LEGEND

- H HP12X53 VERTICAL PILE
- HP12X53 BRACE PILE (BATTER 3H:12V)

PROJECT NO. B-3186/B-5898
HAYWOOD COUNTY
 STATION: 68+65.75± -L_RT-

SHEET 2 OF 5



Eric Nolting 1/25/2022

STATE OF NORTH CAROLINA
 DEPARTMENT OF TRANSPORTATION
 RALEIGH

**GENERAL DRAWING
 FOUNDATION LAYOUT**

DES BY: M. NEHEISEL	DATE: 07/21	DWG BY: B. PETERSON	DATE: 06/21
DES CHK: E. NOLTING	DATE: 07/21	CHK BY: E. NOLTING	DATE: 07/21

HDR HDR Engineering, Inc. of the Carolinas
 555 Fayetteville St., Suite 900 Raleigh, N.C. 27601
 N.C.B.E.L.S. License Number: F-0116

DOCUMENT NOT CONSIDERED FINAL
UNLESS ALL SIGNATURES COMPLETED

REVISIONS						SHEET NO. S03R-02 TOTAL SHEETS 61
NO.	BY:	DATE:	NO.	BY:	DATE:	
1	--	--	3	--	--	
2	--	--	4	--	--	