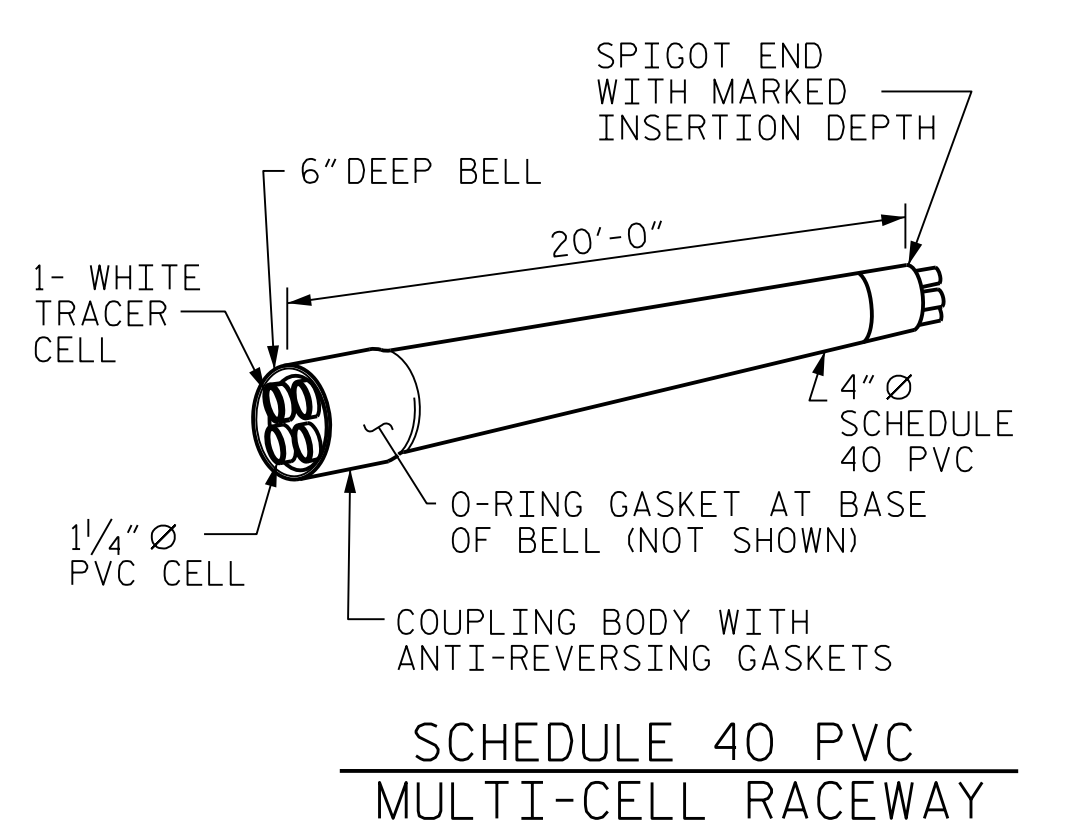
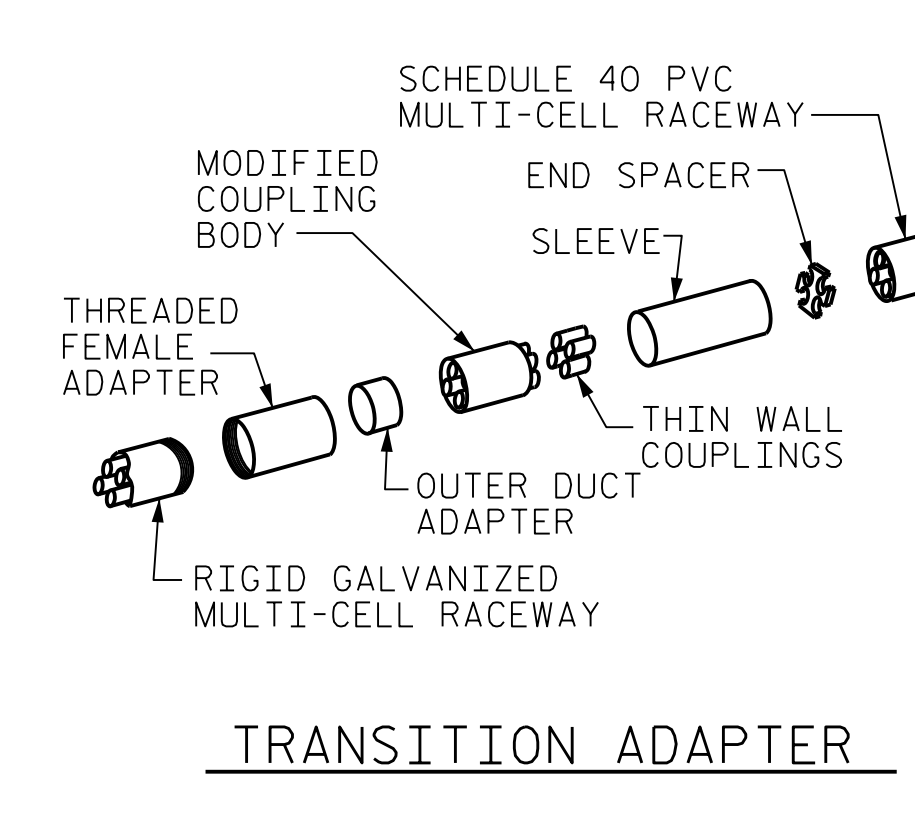


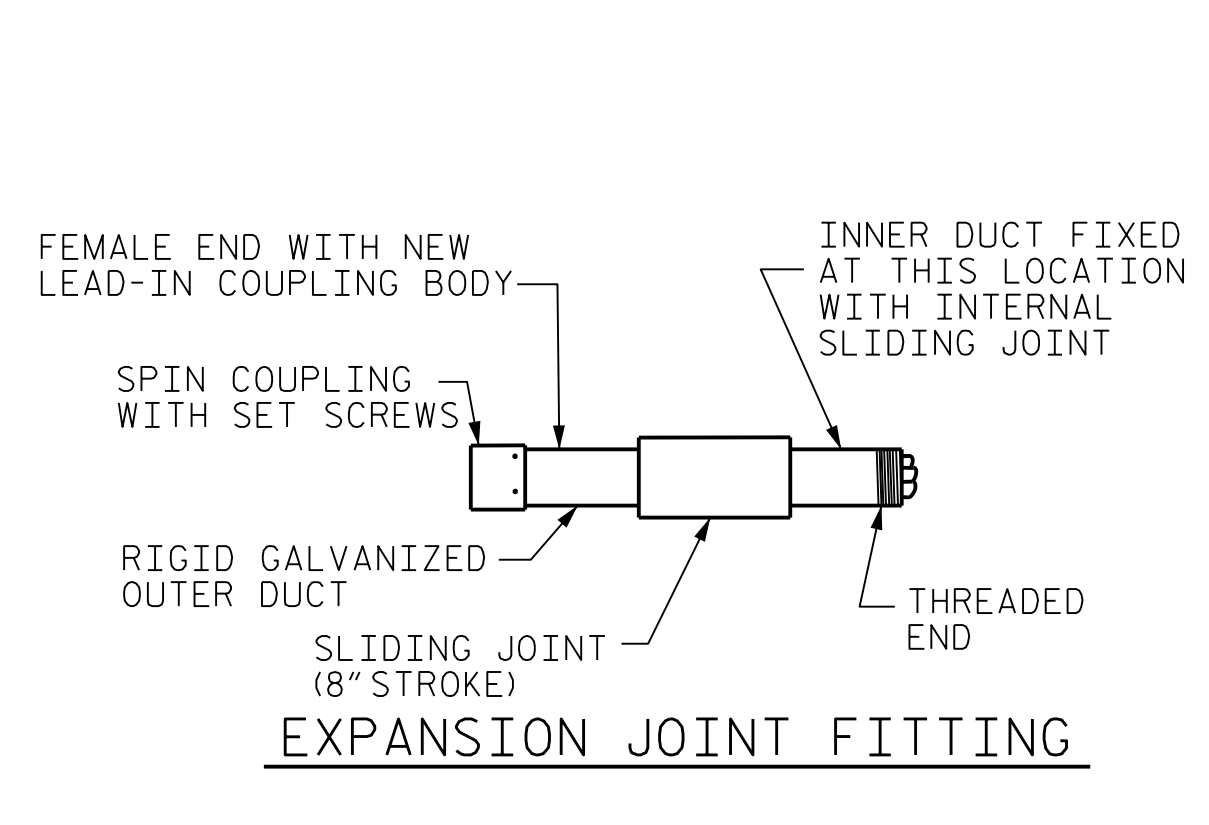
RIGID GALVANIZED (RGC) MULTI-CELL RACEWAY



SCHEDULE 40 PVC MULTI-CELL RACEWAY



TRANSITION ADAPTER



EXPANSION JOINT FITTING

NOTES

THE CONTRACTOR SHALL BE RESPONSIBLE FOR DETERMINING THE TOTAL QUANTITY OF CONDUIT NEEDED TO COMPLETE THE WORK AND THAT THE CONDUIT(S) ARE PLACED AT THE NOTED DIMENSION AND ABOVE THE BOTTOM OF THE GIRDER.

THE INSTALLATION OF THE CONDUIT SYSTEM SHALL BE PAID FOR AS LUMP SUM. THE PRICE SHALL INCLUDE ALL CONDUIT, HANGERS, STABILIZERS, EXPANSION JOINTS, CONCRETE INSERTS, PVC SLEEVES AND ALL NECESSARY HARDWARE TO COMPLETE THE WORK.

THE CONTRACTOR SHALL FIELD VERIFY THAT THE CONDUIT SYSTEM IS NOT IN CONFLICT WITH THE GUARDRAIL POSTS.

SEE DETAIL "C" FOR HANGER ASSEMBLY INSTALLATION.

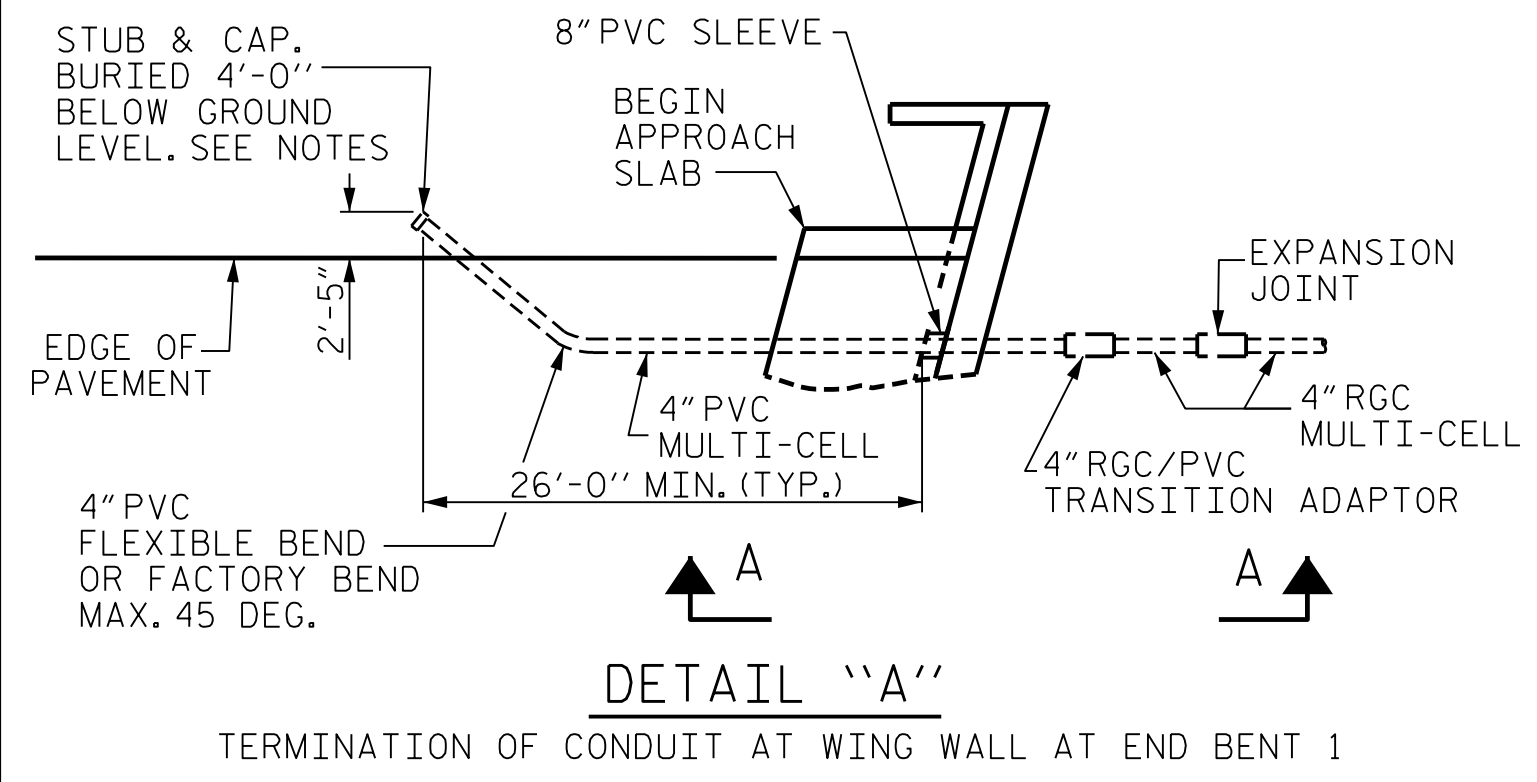
INSTALL SLEEVES PARALLEL TO GIRDERS. SEE DETAIL "B" FOR SLEEVE INSTALLATION.

PROVIDE TRANSITION ADAPTOR (AND EXPANSION JOINT) FOR CONDUIT AT END BENT 1 (AND END BENT 2).

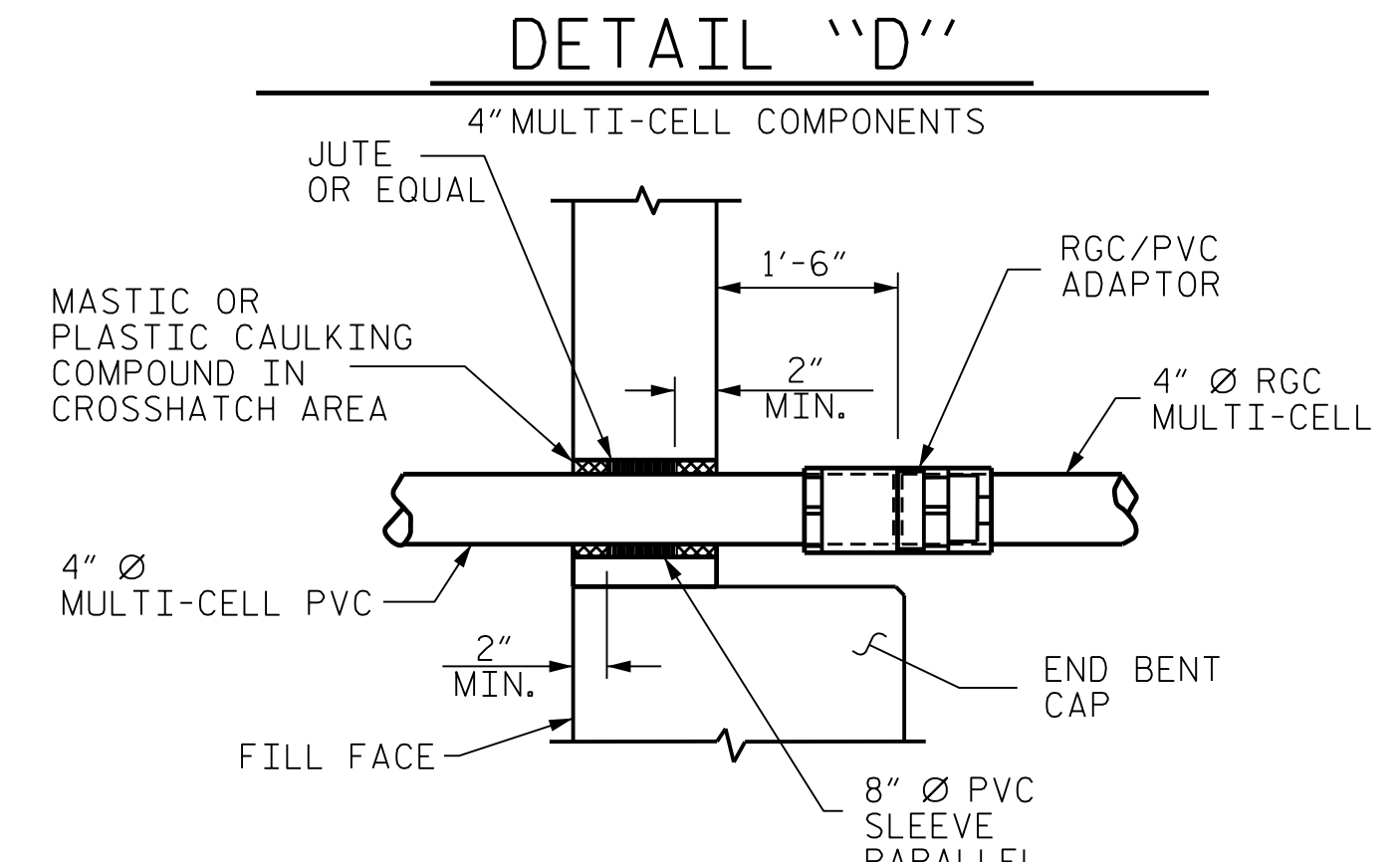
INSTALL STABILIZER'S MIDWAY BETWEEN DECK EXPANSION JOINTS. STABILIZER CAN NOT BE USED INSTEAD OF A HANGER ASSEMBLY.

THE CONCRETE SCREW INSERT SHALL HAVE A ROD SIZE OF 5/8" AND A PULL FORCE OF 1260 lbs.

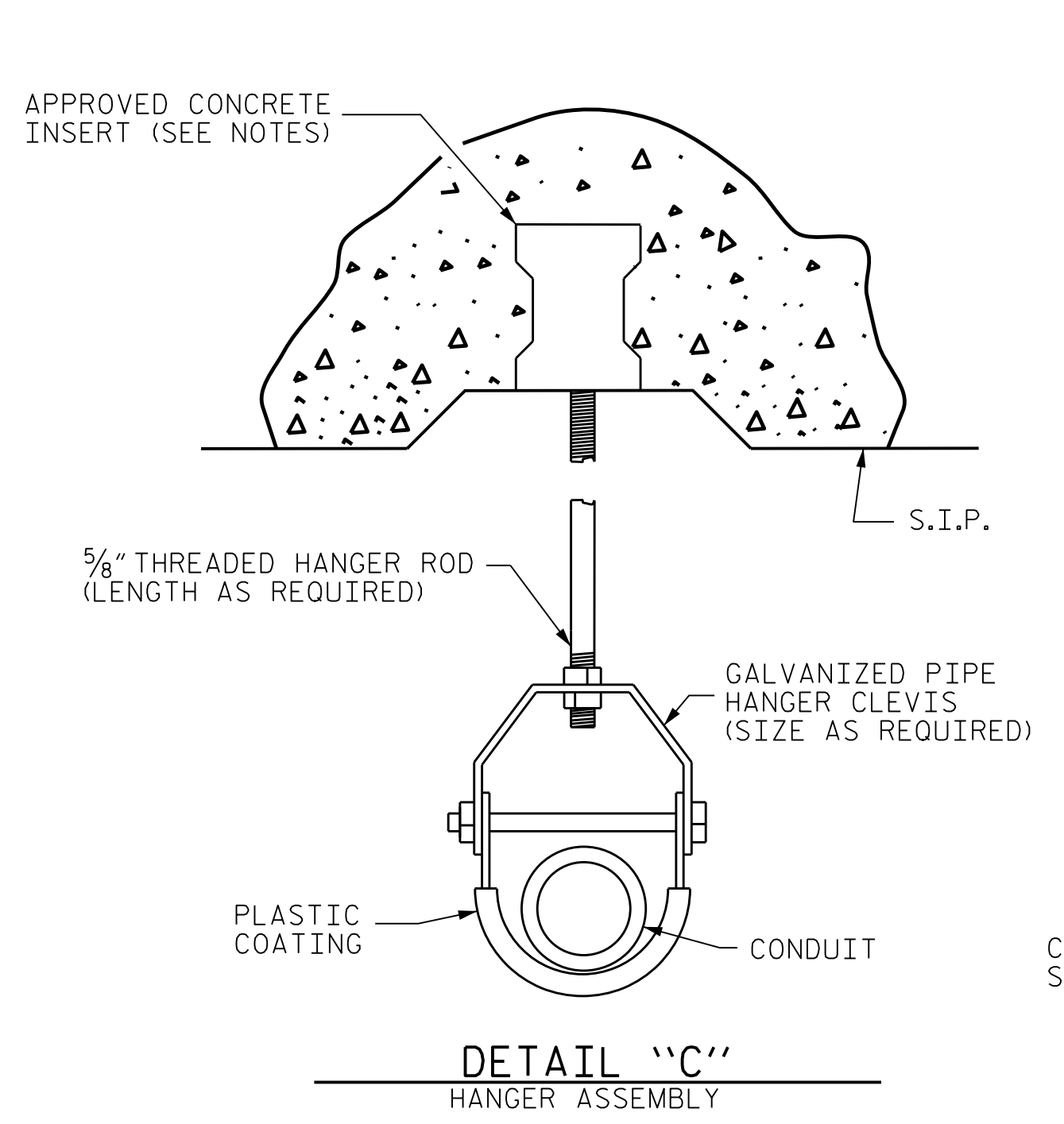
FOR ELECTRICAL CONDUIT SYSTEM, SEE SPECIAL PROVISIONS.



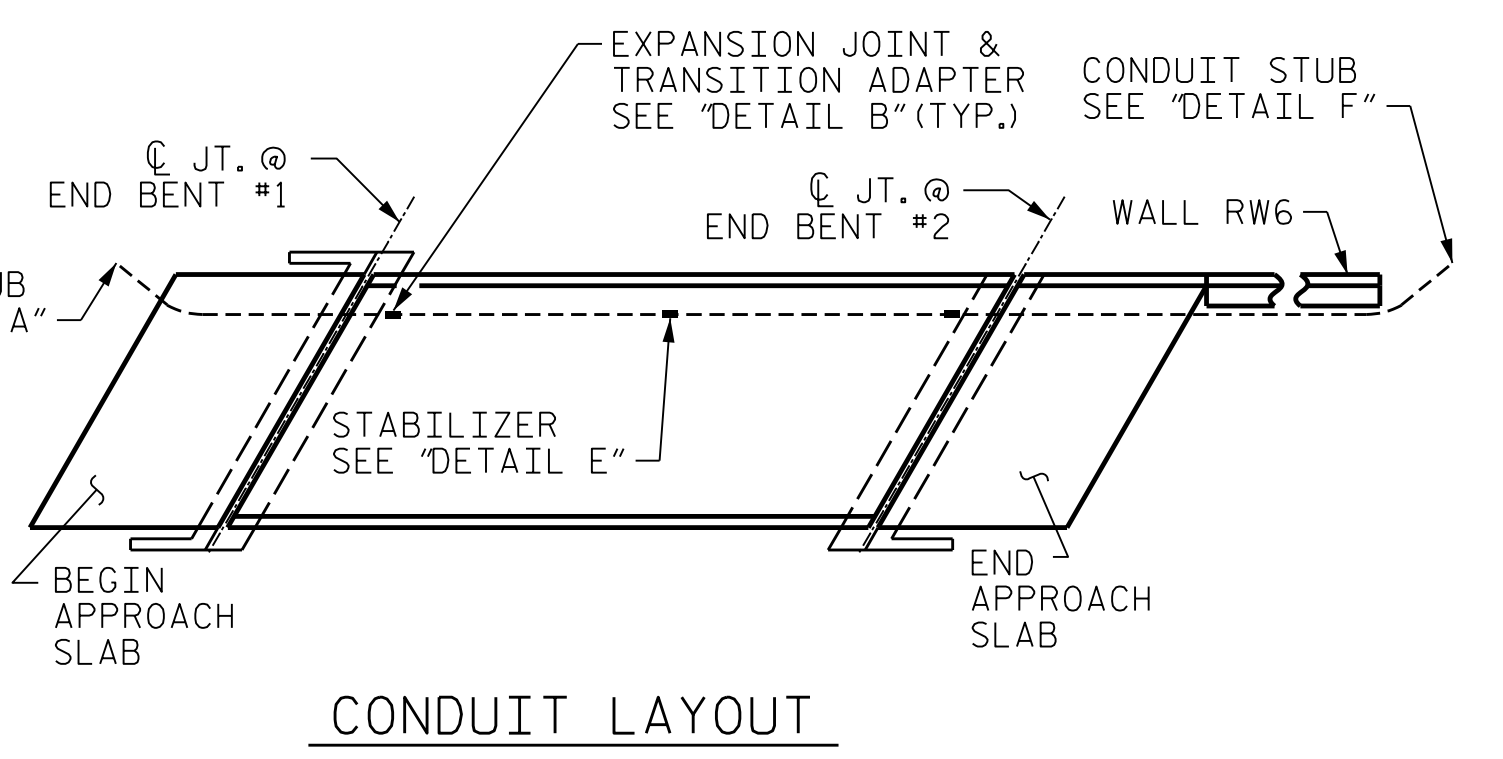
DETAIL "A"



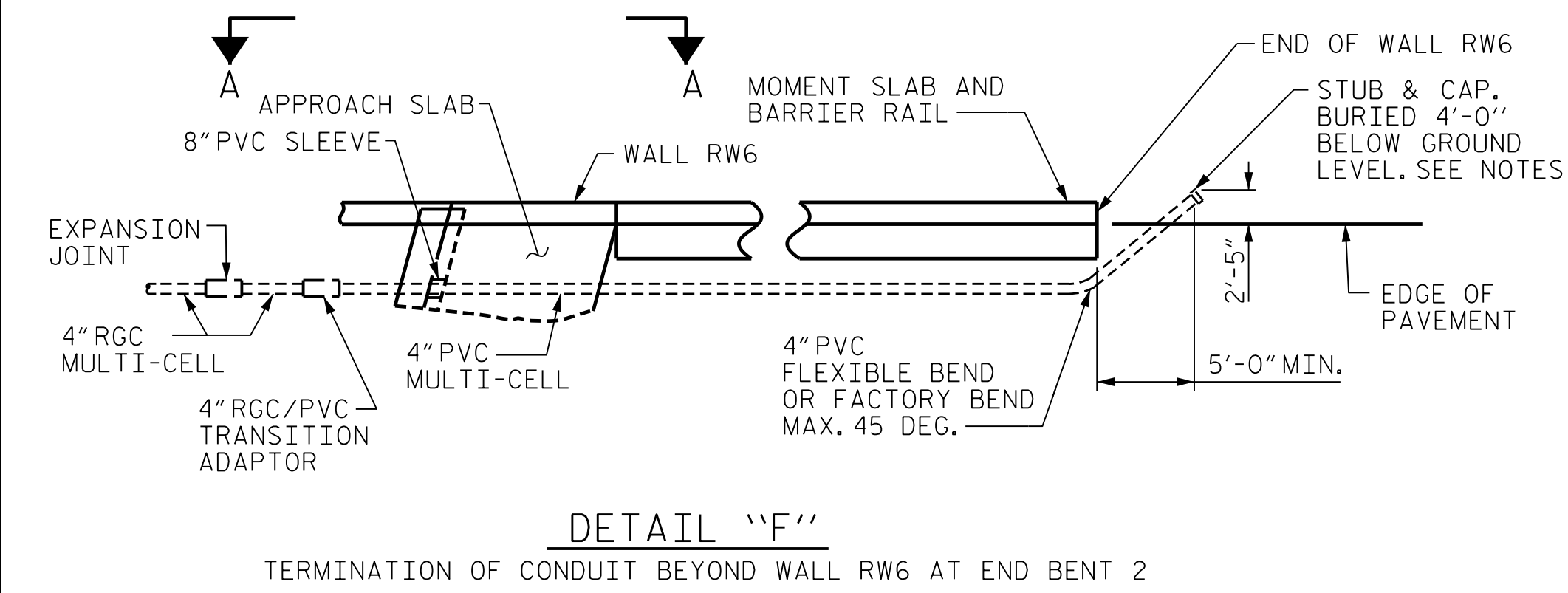
DETAIL "D"



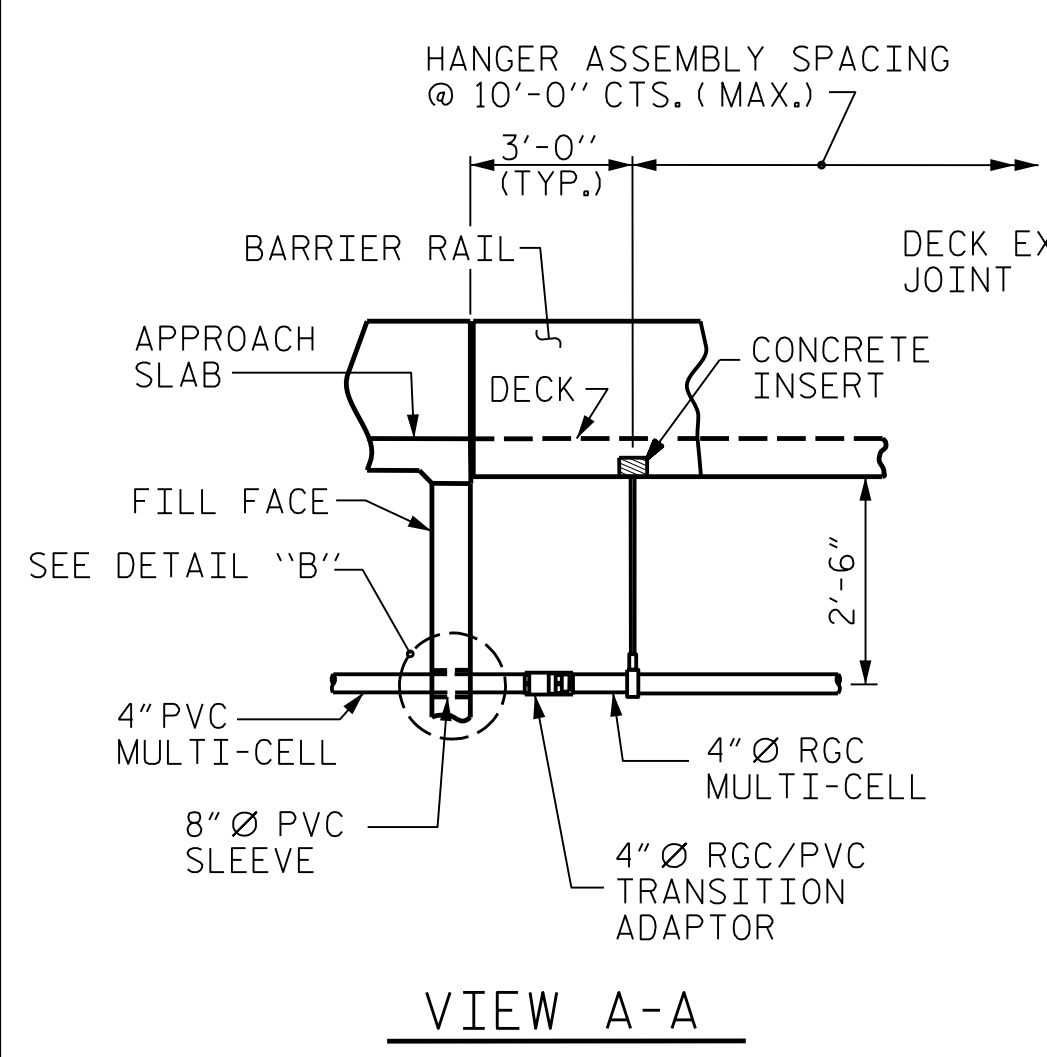
DETAIL "C"



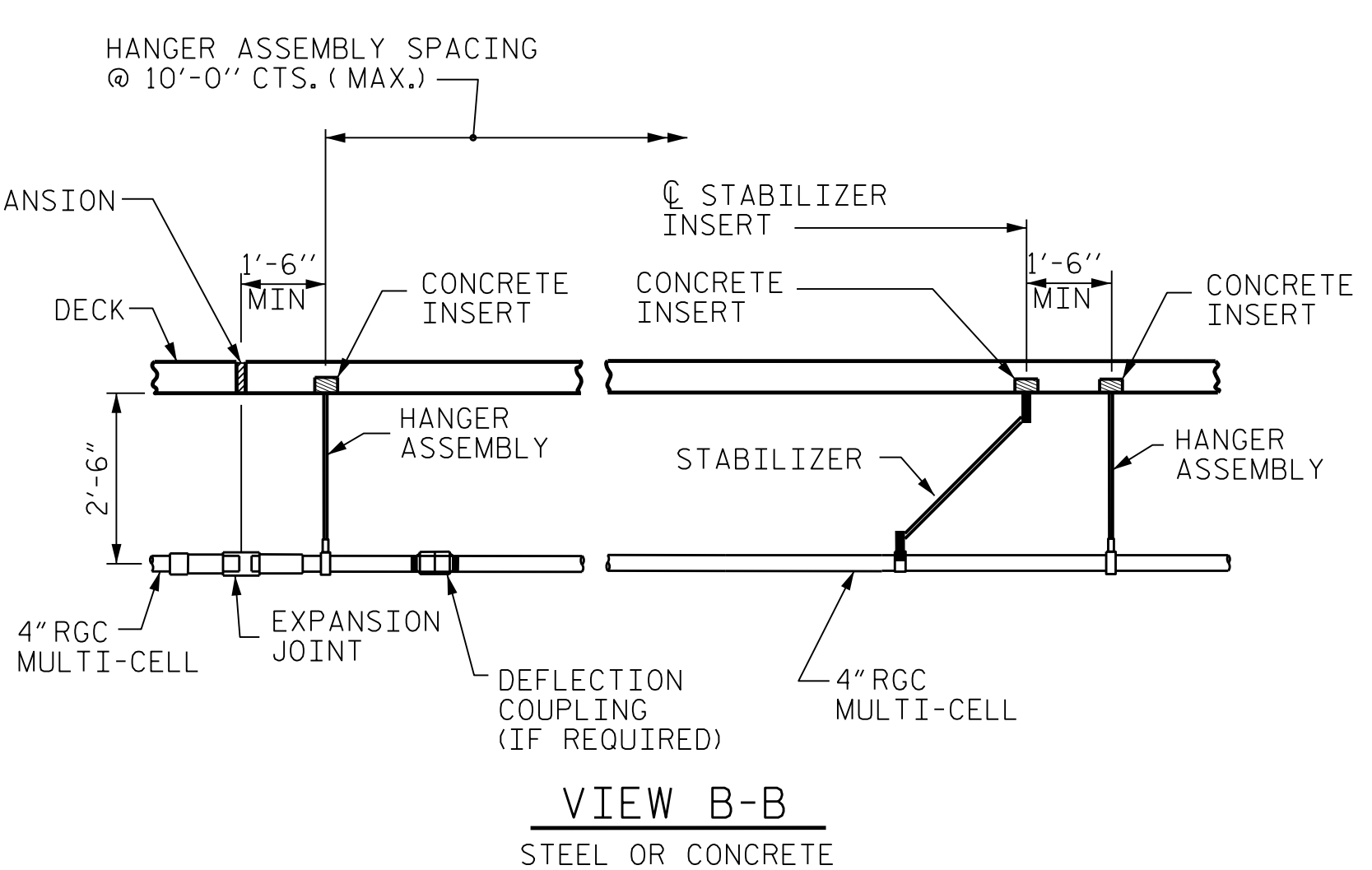
CONDUIT LAYOUT



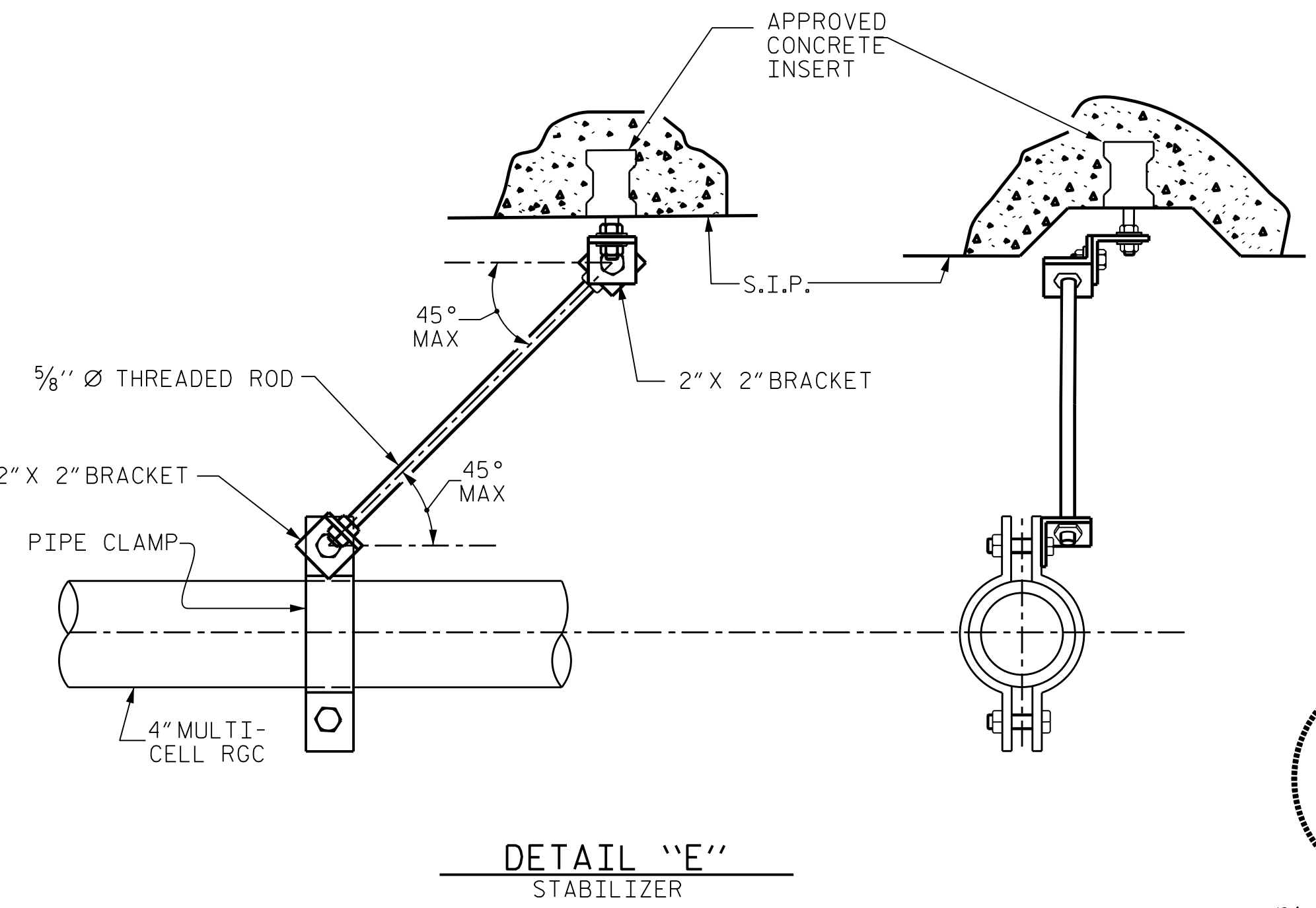
DETAIL "F"



VIEW A-A



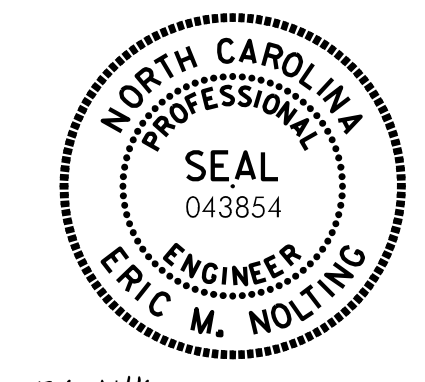
VIEW B-B



DETAIL "E"

ELECTRIC CONDUIT DETAILS

PROJECT NO. B-3186/B-5898
HAYWOOD COUNTY
 STATION: 68+82.30 ± -L-LT-



STATE OF NORTH CAROLINA
 DEPARTMENT OF TRANSPORTATION
 RALEIGH

ELECTRICAL CONDUIT SYSTEM FOR SIGNALS

REVISIONS						SHEET NO. SO3L-44
NO.	BY:	DATE:	NO.	BY:	DATE:	
1	--	--	3	--	--	TOTAL SHEETS 44
2	--	--	4	--	--	

PLOT DRIVER: NCDOT STRUCTURES DEFAULT PLOTTER.plt
 PEN TABLE: NCDOT STRUCTURES DEFAULT PEN.tbl
 USER: PETERSON
 DATE: 1/24/2022
 TIME: 1:54:22 PM
 FILE: ... \403.215.B5898B3186.SMU.LT.044.430110.dgn

DES BY: <u>E. NOLTING</u>	DATE: <u>10/21</u>	DWG BY: <u>B. PETERSON</u>	DATE: <u>10/21</u>
DES CHK: <u>K. DICKENS</u>	DATE: <u>10/21</u>	CHK BY: <u>E. NOLTING</u>	DATE: <u>10/21</u>



Eric Nolting 1/24/2022
 DOCUMENT NOT CONSIDERED FINAL
 UNLESS ALL SIGNATURES COMPLETED