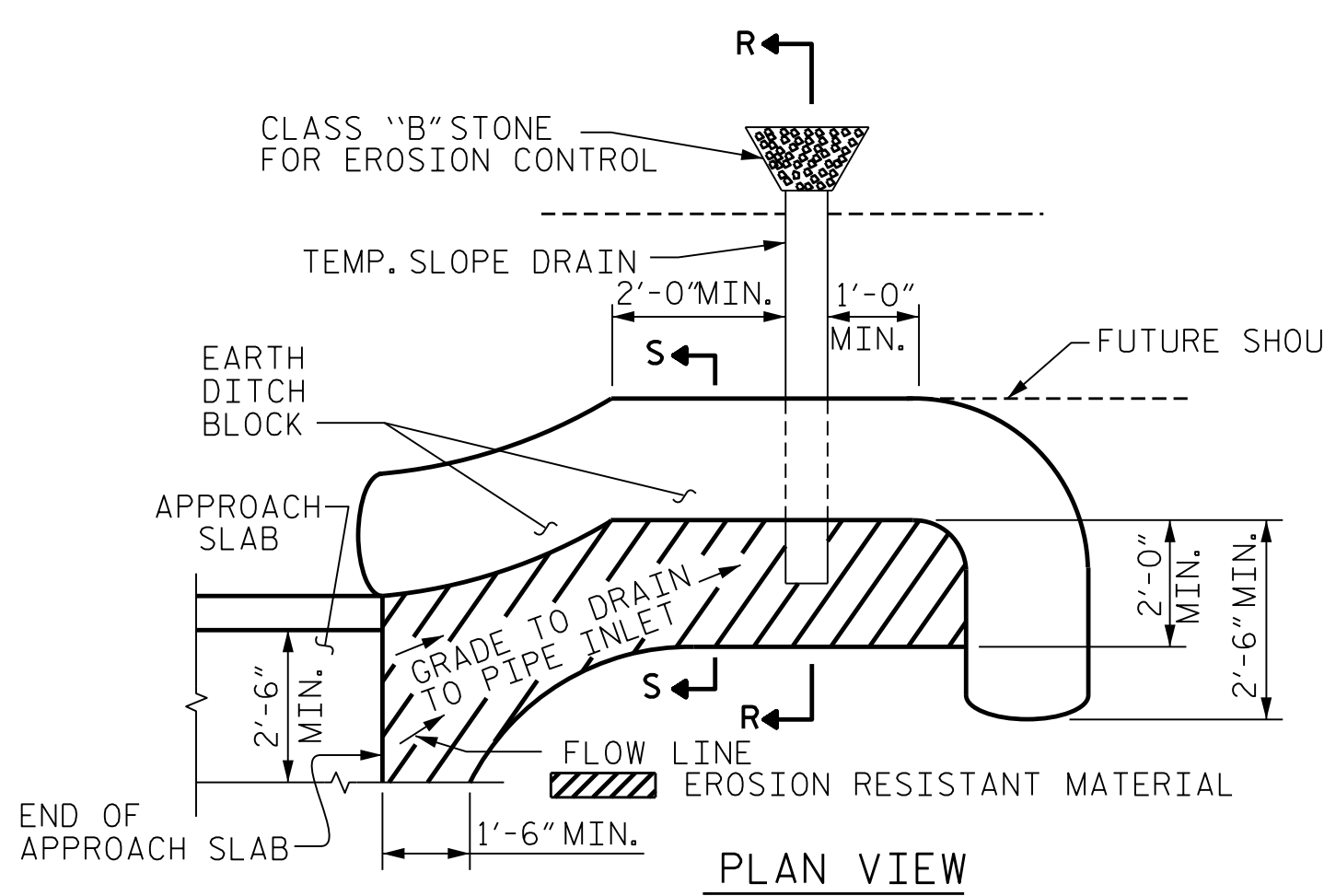
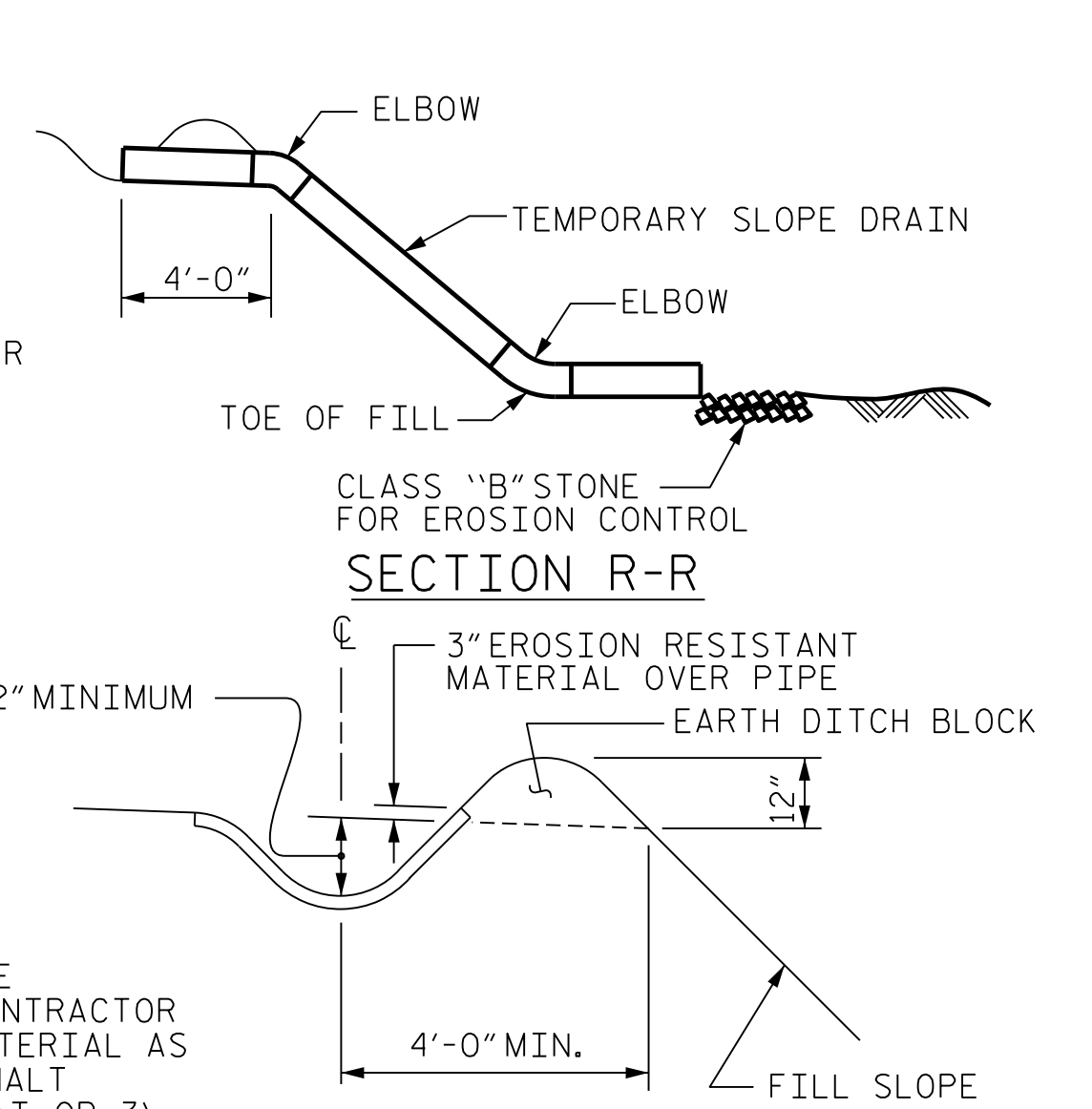


NOTE: IF THE APPROACH SLAB IS NOT CONSTRUCTED IMMEDIATELY AFTER THE BACKFILLING OF THE END BENT EXCAVATION, GRADE TO DRAIN TO THE BOTTOM OF THE SLOPE AND PROVIDE EROSION RESISTANT MATERIAL, SUCH AS FIBERGLASS ROVING OR AS DIRECTED BY THE ENGINEER TO PREVENT SOIL EROSION AND TO PROTECT THE AREA ADJACENT TO THE STRUCTURE. THE CONTRACTOR WILL BE REQUIRED TO REMOVE THESE MATERIALS PRIOR TO CONSTRUCTION OF THE APPROACH SLAB.

**TEMPORARY DRAINAGE DETAIL**

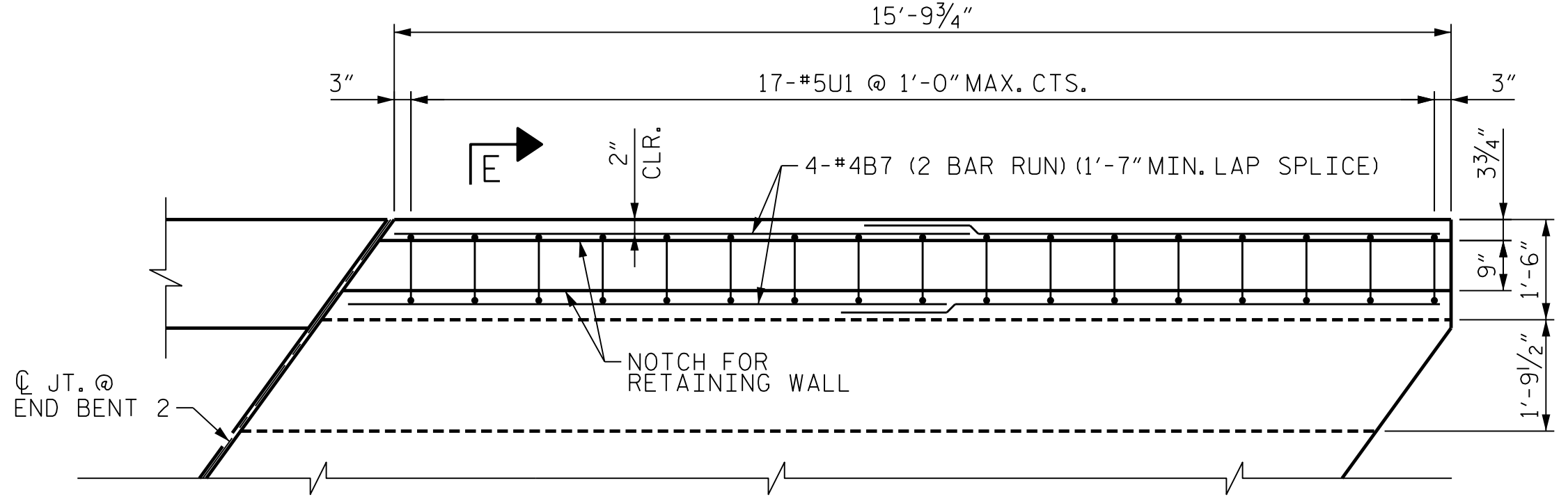


NOTE: IMMEDIATELY AFTER THE CONSTRUCTION OF THE APPROACH SLAB, THE CONTRACTOR SHALL PROVIDE TEMPORARY BERM AND SLOPE DRAIN. CONTRACTOR SHALL GRADE TO PIPE INLET AND PROVIDE EROSION RESISTANT MATERIAL AS SHOWN. THE EROSION RESISTANT MATERIAL SHALL BE EITHER 1) ASPHALT PLANT MIX, TYPE 1 OR TYPE 2, MIN. 2" DEPTH, 2) EROSION CONTROL MAT, OR 3) CONCRETE, AS DIRECTED BY THE ENGINEER. THE SLOPE DRAIN SHALL CONSIST OF A NON-PERFORATED TEMPORARY DRAINAGE PIPE, 12 INCHES IN DIAMETER.



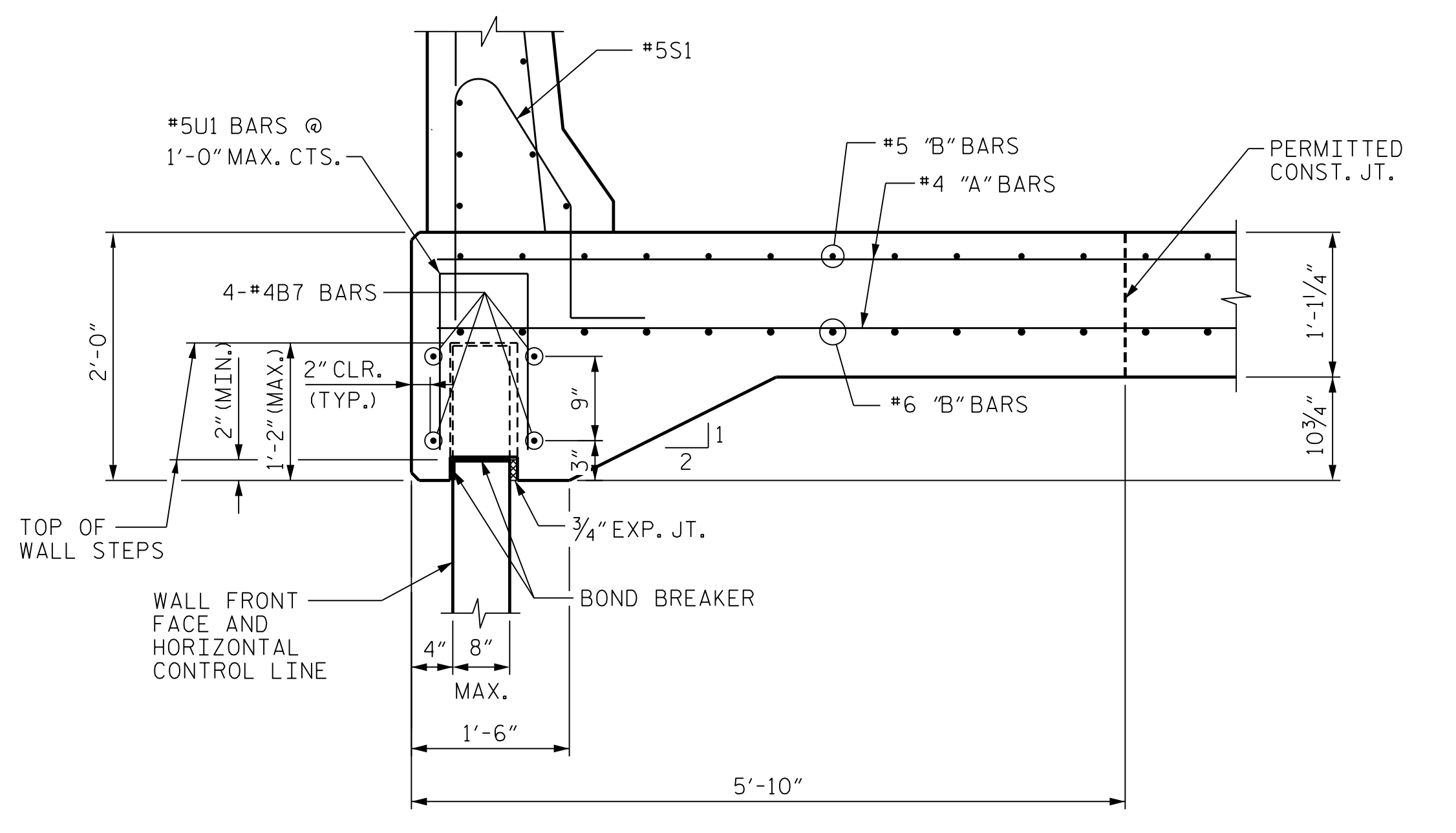
**TEMPORARY BERM AND SLOPE DRAIN DETAILS**

(TO BE USED WHEN SHOULDER BERM GUTTER IS REQUIRED)



**DETAIL "A"**

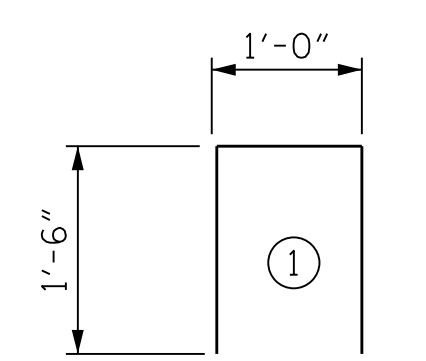
MAIN APPROACH SLAB AND BARRIER RAIL STEEL NOT SHOWN FOR CLARITY



**SECTION E-E**

BILL OF MATERIAL					
APPROACH SLAB AT END BENT 1					
BAR	NO.	SIZE	TYPE	LENGTH	WEIGHT
* A1	17	#4	STR	36'-5"	414
A2	18	#4	STR	36'-5"	438
* A3	7	#4	STR	7'-1"	34
A4	8	#4	STR	6'-10"	37
* B1	48	#5	STR	15'-3"	764
B2	48	#6	STR	16'-6"	1190
* B3	24	#5	STR	11'-4"	284
B4	24	#6	STR	11'-7"	418
REINFORCING STEEL				LBS.	2,083
* EPOXY COATED REINFORCING STEEL				LBS.	1,496
CLASS AA CONCRETE				C. Y.	26.3
APPROACH SLAB AT END BENT 2					
BAR	NO.	SIZE	TYPE	LENGTH	WEIGHT
* A1	17	#4	STR	36'-5"	414
A2	18	#4	STR	36'-5"	438
* B1	57	#5	STR	15'-3"	907
B2	57	#6	STR	16'-6"	1413
* B5	6	#5	STR	9'-2"	58
B6	6	#6	STR	9'-6"	86
B7	8	#4	STR	9'-1"	49
U1	17	#5	1	4'-0"	71
REINFORCING STEEL				LBS.	2,057
* EPOXY COATED REINFORCING STEEL				LBS.	1,379
CLASS AA CONCRETE				C. Y.	27.0

**BAR TYPES**



ALL DIMENSIONS ARE OUT TO OUT

PROJECT NO. B-3186/B-5898  
HAYWOOD COUNTY  
 STATION: 68+82.30 ± -L-LT-

SHEET 3 OF 3

STATE OF NORTH CAROLINA  
 DEPARTMENT OF TRANSPORTATION  
 RALEIGH

**BRIDGE APPROACH  
 SLAB DETAILS**



Eric Nolting 1/24/2022

REVISIONS					
NO.	BY:	DATE:	NO.	BY:	DATE:
1	--	--	3	--	--
2	--	--	4	--	--

SHEET NO. 303L-36  
 TOTAL SHEETS 44



DOCUMENT NOT CONSIDERED FINAL UNLESS ALL SIGNATURES COMPLETED

PLOT DRIVER: NCDOT\_STRUCTURES\_DEFAULT\_PLOTTER.plt  
 USER: PETERSON DATE: 1/24/2022  
 FILE: ... \403.175.B5898B3186.5MU.AS.036.430110.dgn

DES BY: F. CORDOVA	DATE: 07/21	DWG BY: B. PETERSON	DATE: 03/21
DES CHK: G. MYERS	DATE: 07/21	CHK BY: G. MYERS	DATE: 07/21