

NOTES

FOR BRIDGE APPROACH FILL INCLUDING GEOTEXTILE, 6" Ø DRAINAGE PIPE, AND SELECT MATERIAL BACKFILL, SEE ROADWAY PLANS.

GEOTEXTILE SHALL BE TYPE I IN ACCORDANCE WITH THE STANDARD SPECIFICATIONS SECTION 1056.

SELECT MATERIAL BACKFILL (CLASS V OR CLASS VI) SHALL BE IN ACCORDANCE WITH STANDARD SPECIFICATIONS SECTION 1016.

SELECT MATERIAL BACKFILL IS TO BE CONTINUOUS ALONG FILL FACE OF BACKWALL FROM OUTSIDE EDGE TO OUTSIDE EDGE OF APPROACH SLAB.

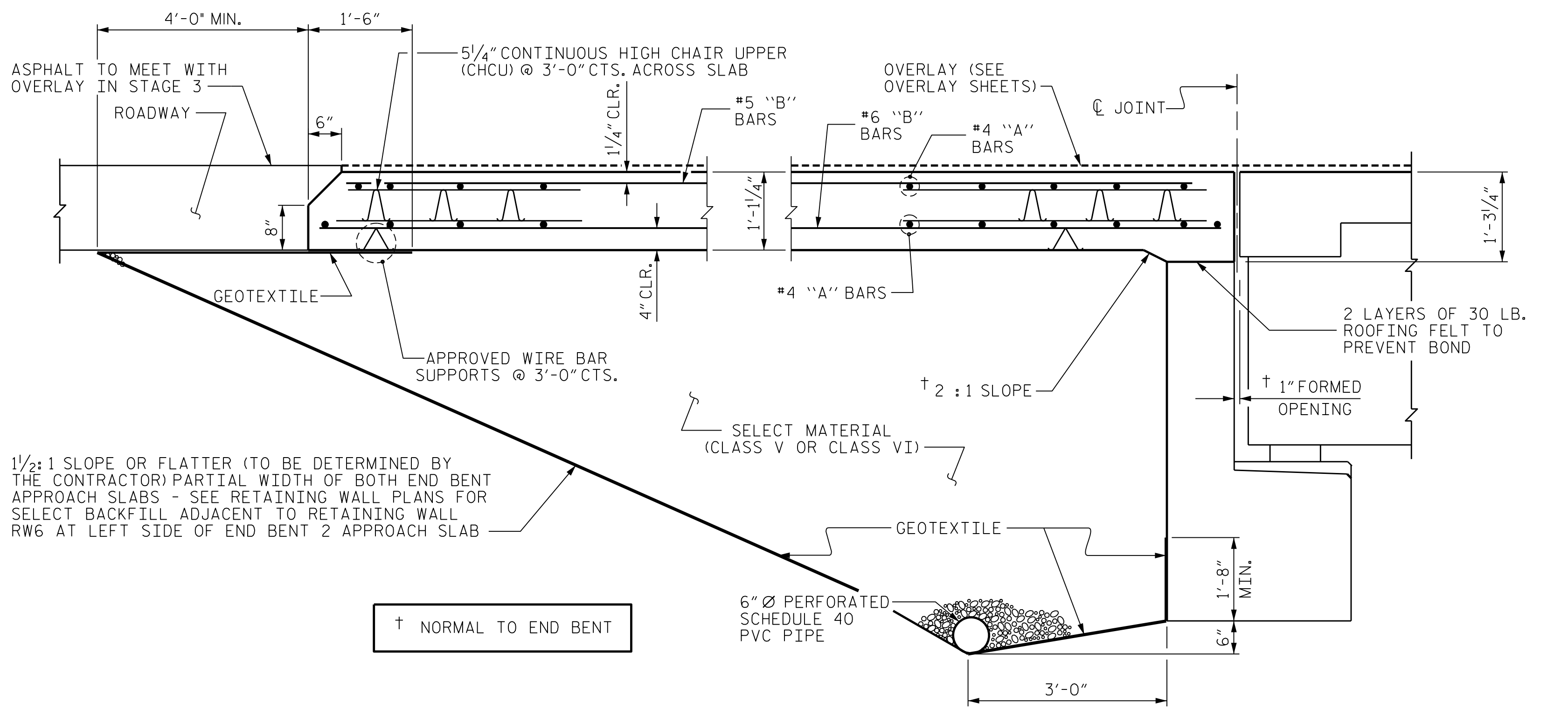
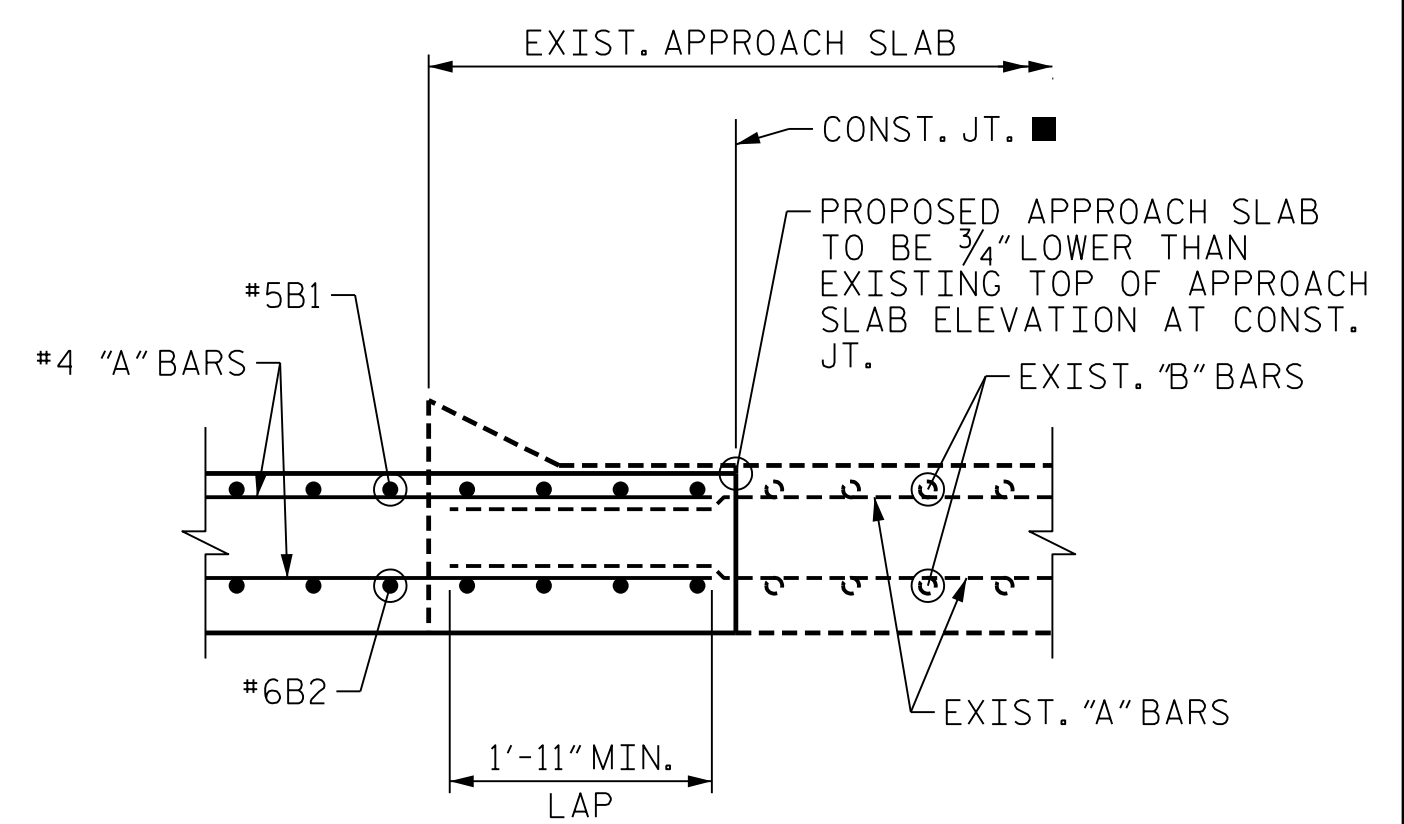
APPROACH SLAB SHALL NOT BE CONSTRUCTED PRIOR TO COMPLETION OF THE BRIDGE DECK.

THE JOINT SHALL BE SAWED PRIOR TO THE CASTING OF THE BARRIER RAIL.

FOR THE 6" Ø DRAINAGE PIPE OUTLET(S), SEE ROADWAY STANDARD DRAWINGS.

AREA BETWEEN THE WINGWALL AND APPROACH SLAB SHALL BE GRADED TO DRAIN THE WATER AWAY FROM THE FILL FACE OF THE BRIDGE AND SHALL BE PAVED. SEE ROADWAY PLANS.

FOR DETAIL "A" AND SECTION E-E, SEE "BRIDGE APPROACH SLAB DETAILS" SHEET 3 OF 3.



1 1/2" DEEP SAWCUT IN TOP OF DECK. REMOVE REMAINING CONCRETE USING MEANS THAT AVOID DAMAGE TO THE EXISTING TRANSVERSE REINFORCING.

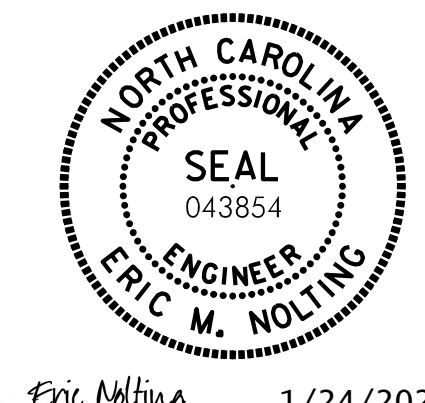
SPLICE LENGTHS		
BAR SIZE	EPOXY COATED	UNCOATED
#4	1'-11"	1'-7"
#5	2'-5"	2'-0"
#6	3'-7"	2'-5"

PROJECT NO. B-3186/B-5898

HAYWOOD COUNTY

STATION: 68+82.30 ± -L-LT-

SHEET 1 OF 3



Eric Nolting 1/24/2022

STATE OF NORTH CAROLINA
DEPARTMENT OF TRANSPORTATION
RALEIGH

BRIDGE APPROACH SLAB PLAN AND SECTION

REVISIONS						SHEET NO. SO3L-34 TOTAL SHEETS 44
NO.	BY:	DATE:	NO.	BY:	DATE:	
1	--	--	3	--	--	44
2	--	--	4	--	--	

HDR HDR Engineering, Inc. of the Carolinas
555 Fayetteville St., Suite 900 Raleigh, N.C. 27601
N.C.B.E.L.S. License Number: F-0116

DOCUMENT NOT CONSIDERED FINAL UNLESS ALL SIGNATURES COMPLETED

PLOT DRIVER: NCDOT_STRUCTURES_DEFAULT_PLOTTER.plt
 USER: PETERSON DATE: 1/24/2022
 FILE: ... \403.165.B5898B3186.SMU.AS.034.430110.dgn
 PENTABLE: NCDOT_STRUCTURES_DEFAULT_PEN.tbl
 TIME: 2:20:09 PM

DES BY: F. CORDOVA DATE: 03/21
 DES CHK: G. MYERS DATE: 07/21
 DWG BY: B. PETERSON DATE: 03/21
 CHK BY: G. MYERS DATE: 07/21