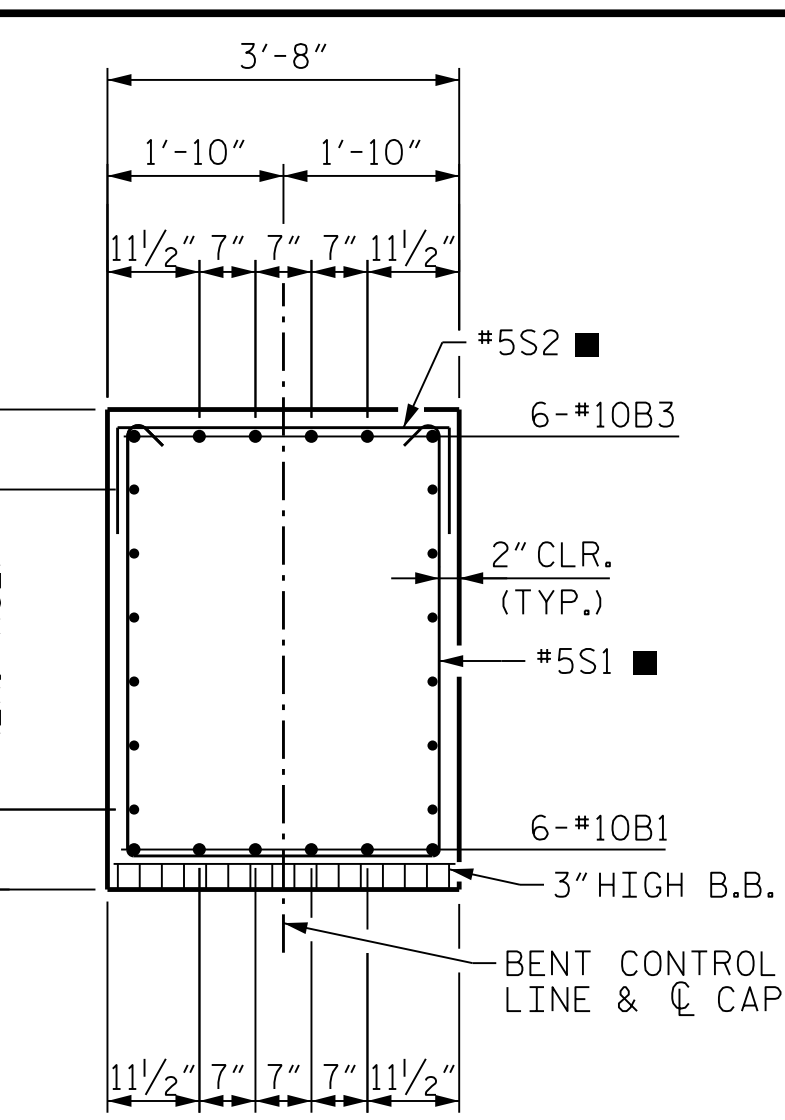
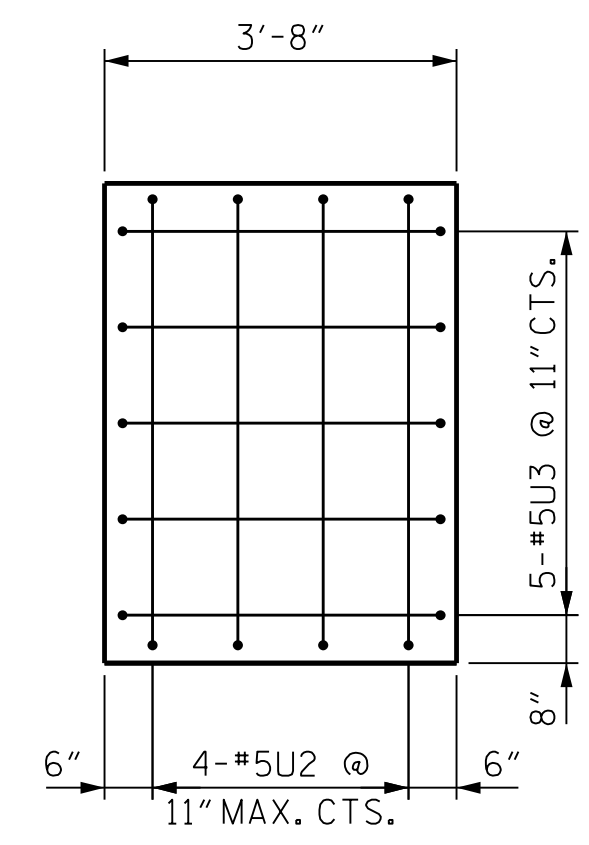


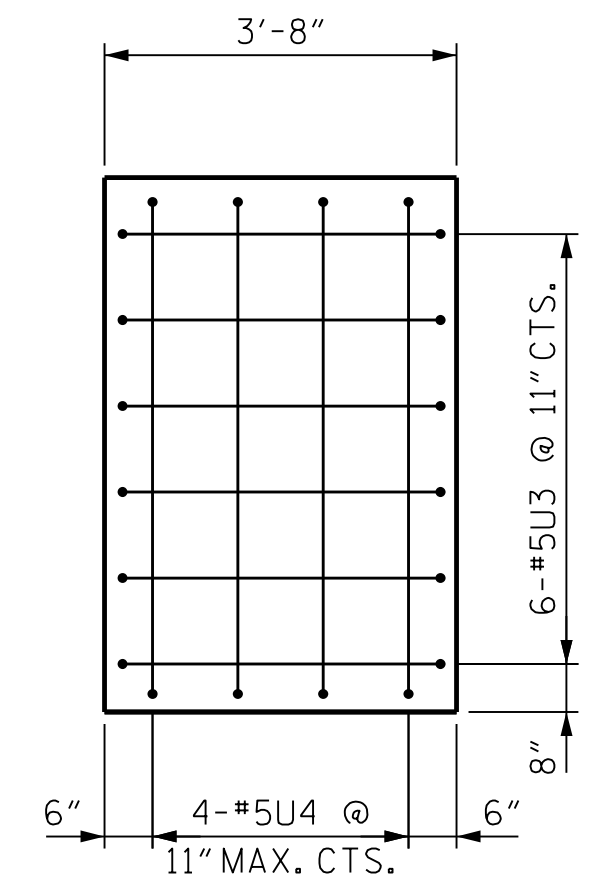
END ELEVATION
 # TYP. SP-2, SP-4 & SP-5



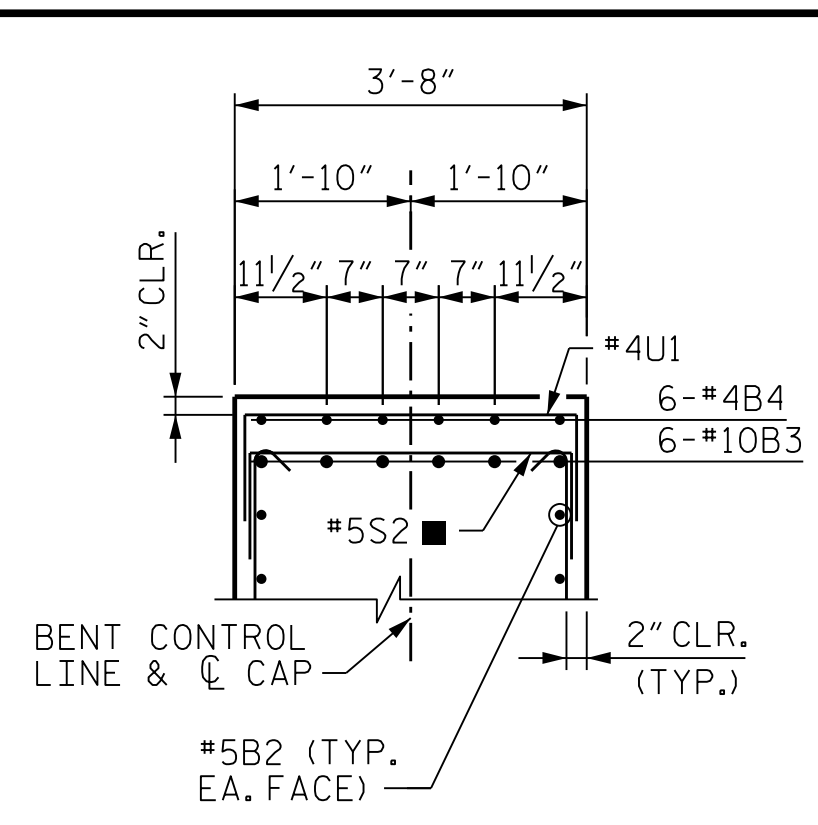
SECTION A-A



VIEW C-C

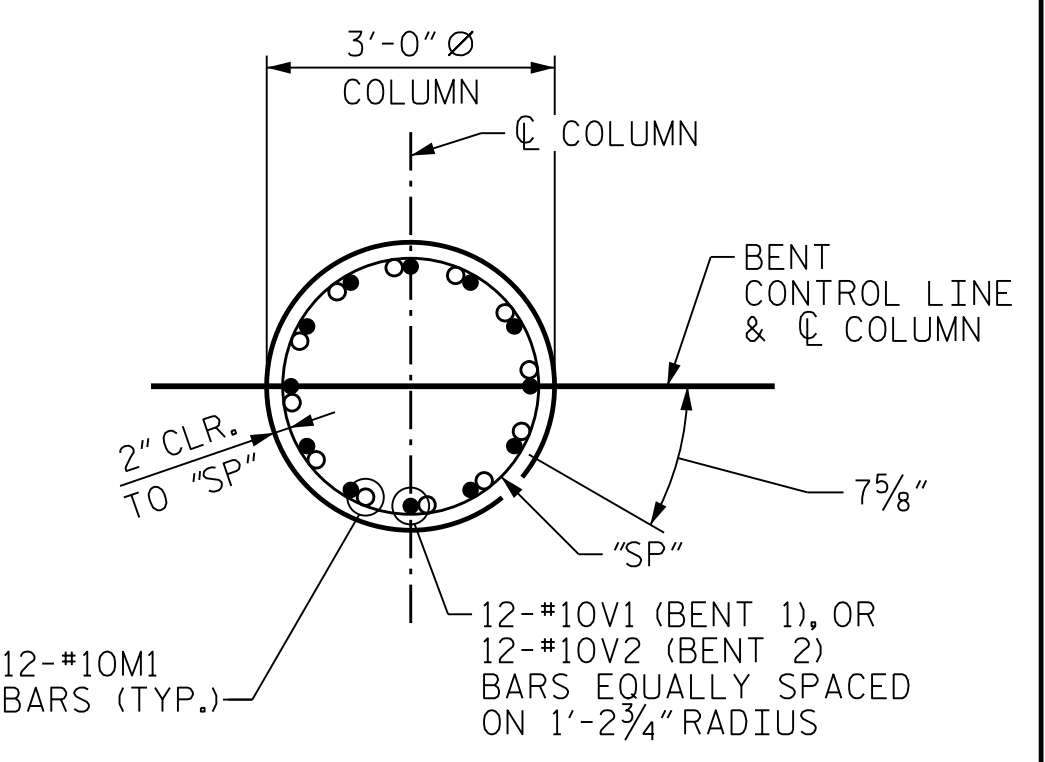


VIEW D-D

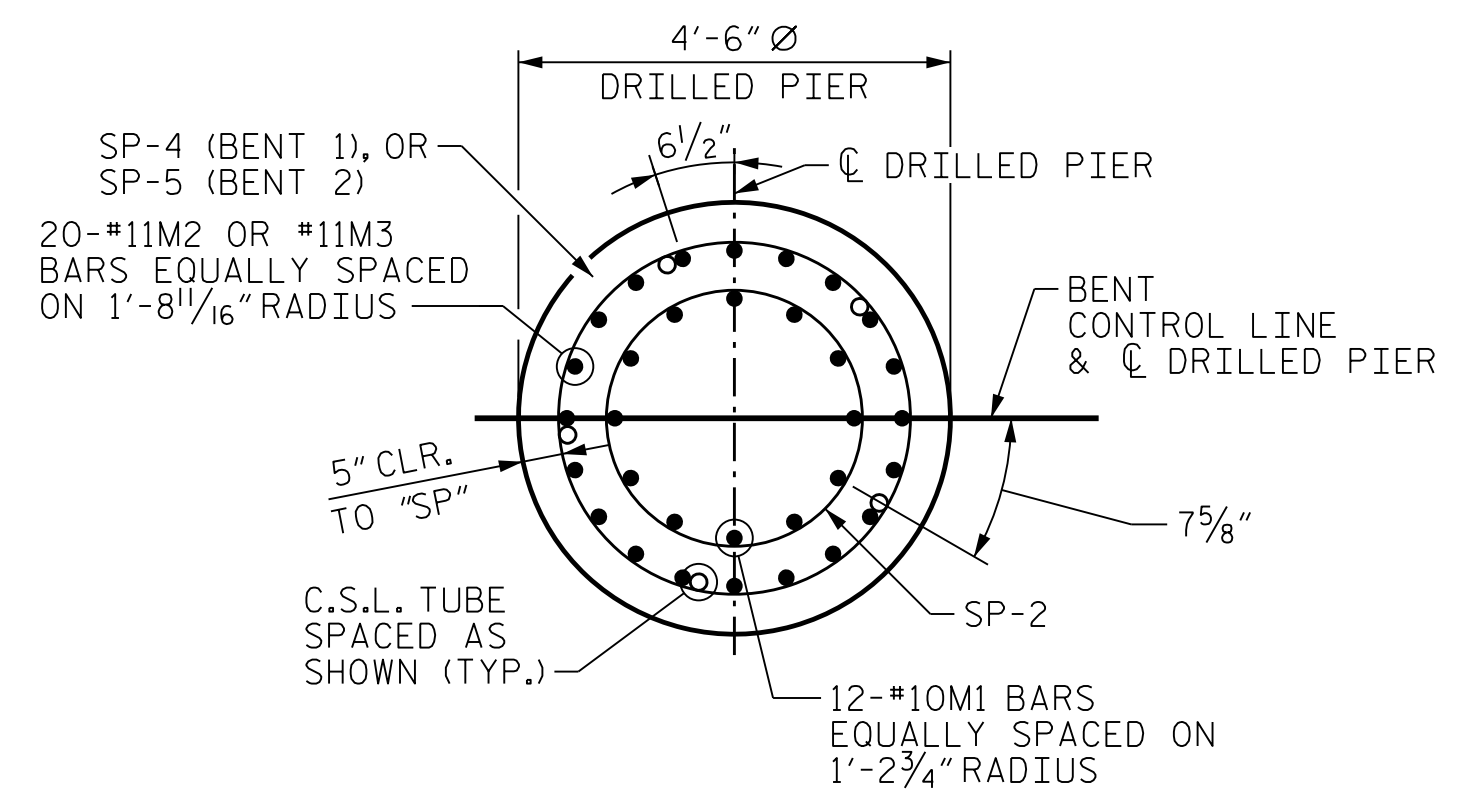


SECTION B-B

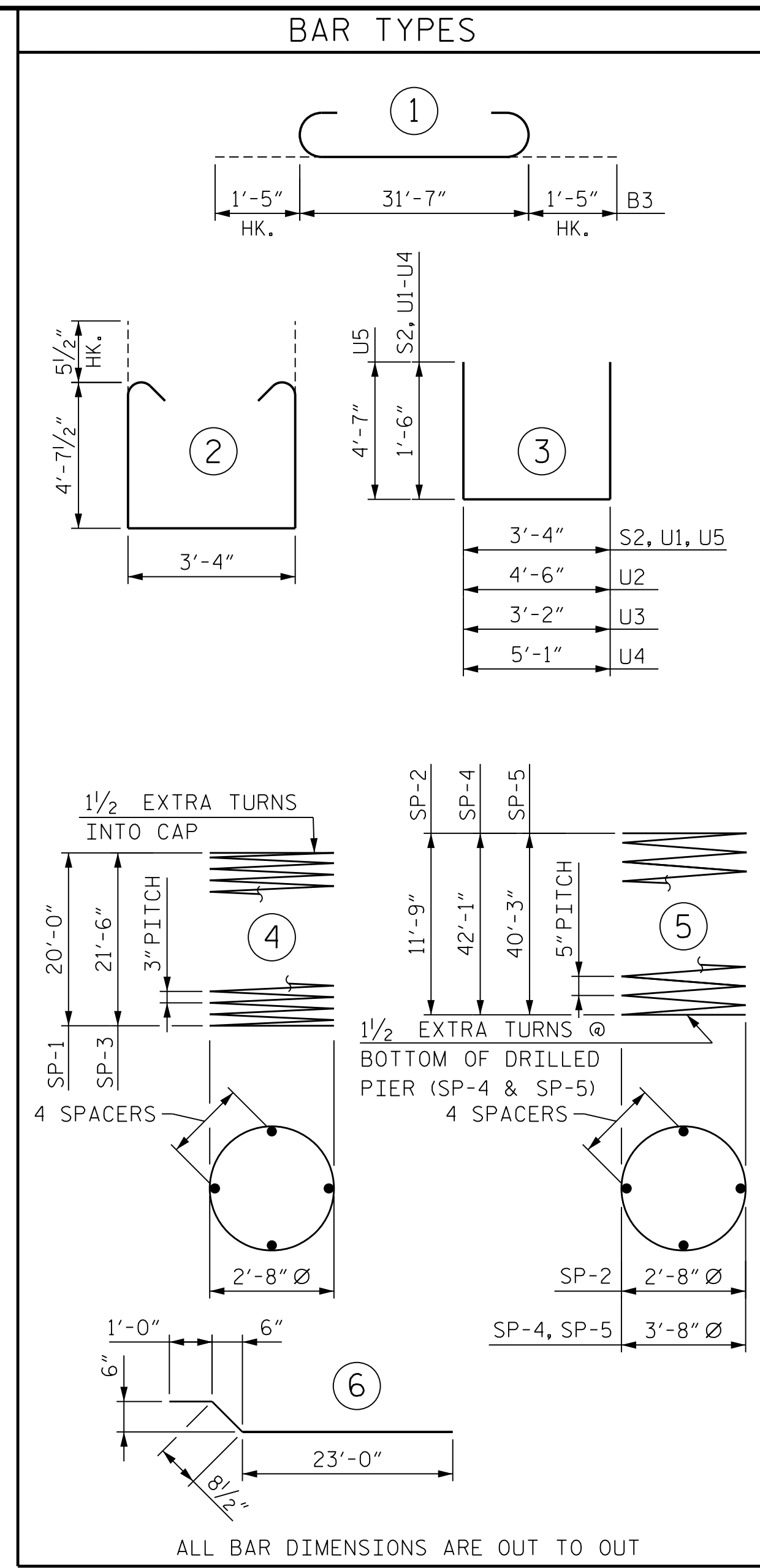
■ = INVERT ALTERNATE STIRRUPS



SECTION E-E



SECTION F-F



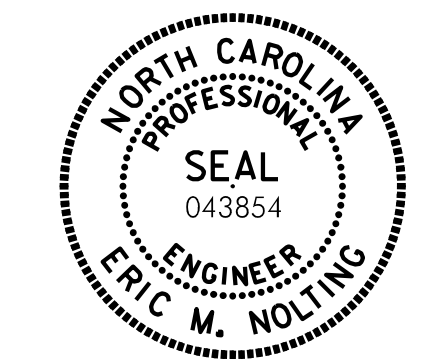
ALL BAR DIMENSIONS ARE OUT TO OUT

BILL OF MATERIAL						BILL OF MATERIAL					
BENT 1						BENT 2					
BAR NO.	SIZE	TYPE	LENGTH	WEIGHT		BAR NO.	SIZE	TYPE	LENGTH	WEIGHT	
B1	6	#10	STR	31'-8"	818	B1	6	#10	STR	31'-8"	818
B2	12	#5	STR	31'-8"	397	B2	12	#5	STR	31'-8"	397
B3	6	#10	1	34'-5"	889	B3	6	#10	1	34'-5"	889
B4	6	#4	STR	11'-8"	47	B4	6	#4	STR	11'-8"	47
B5	6	#4	STR	3'-11"	16	B5	6	#4	STR	3'-11"	16
M1	24	#10	6	24'-9"	2556	M1	24	#10	6	24'-9"	2556
M2	40	#11	STR	45'-4"	9635	M3	40	#11	STR	43'-4"	9210
S1	32	#5	2	13'-6"	451	S1	32	#5	2	13'-6"	451
S2	32	#5	3	6'-4"	212	S2	32	#5	3	6'-4"	212
U1	43	#4	3	6'-4"	182	U1	43	#4	3	6'-4"	182
U2	4	#5	3	7'-6"	32	U2	4	#5	3	7'-6"	32
U3	11	#5	3	6'-2"	71	U3	11	#5	3	6'-2"	71
U4	4	#5	3	8'-1"	34	U4	4	#5	3	8'-1"	34
U5	6	#5	3	12'-6"	79	U5	6	#5	3	12'-6"	79
V1	24	#10	STR	24'-4"	2513	V2	24	#10	STR	25'-10"	2668
REINFORCING STEEL LBS. 17,932						REINFORCING STEEL LBS. 17,662					
BAR NO.	SIZE	TYPE	LENGTH	WEIGHT		BAR NO.	SIZE	TYPE	LENGTH	WEIGHT	
SP-1	2	*	4	672'-5"	899	SP-2	2	**	5	232'-0"	484
SP-2	2	**	5	232'-0"	484	SP-3	2	*	4	721'-11"	965
SP-4	2	**	5	1164'-9"	2430	SP-5	2	**	5	1114'-9"	2326
SPIRAL REINF. STEEL LBS. 3,813						SPIRAL REINF. STEEL LBS. 3,775					
CLASS A CONCRETE						CLASS A CONCRETE					
POUR 2 (COLUMNS)			CU. YDS.	10.3		POUR 2 (COLUMNS)			CU. YDS.	11.1	
POUR 3 (CAP)			CU. YDS.	22.8		POUR 3 (CAP)			CU. YDS.	22.8	
TOTAL CLASS A CONCRETE CU. YDS. 33.1						TOTAL CLASS A CONCRETE CU. YDS. 33.9					
DRILLED PIER CONCRETE						DRILLED PIER CONCRETE					
POUR 1 (DRILLED PIERS)			CU. YDS.	50.6		POUR 1 (DRILLED PIERS)			CU. YDS.	48.2	
CSL TUBES LIN. FT. 444.8						CSL TUBES LIN. FT. 424.2					
4'-6" DIA. DRILLED PIERS IN SOIL			LIN. FT.	79.0		4'-6" DIA. DRILLED PIERS IN SOIL			LIN. FT.	74.8	
4'-6" DIA. DRILLED PIERS NOT IN SOIL			LIN. FT.	7.0		4'-6" DIA. DRILLED PIERS NOT IN SOIL			LIN. FT.	7.0	

* THE SP-1 AND SP-3 SPIRAL REINFORCING STEEL SHALL BE W20 OR D-20 COLD DRAWN WIRE OR #4 PLAIN OR DEFORMED BAR.
 ** THE SP-2, SP-4 & SP-5 SPIRAL REINFORCING STEEL SHALL BE W31 OR D-31 COLD DRAWN WIRE OR #5 PLAIN OR DEFORMED BAR.

PROJECT NO. B-3186/B-5898
HAYWOOD COUNTY
 STATION: 68+82.30 ± -L-LT-

SHEET 2 OF 2

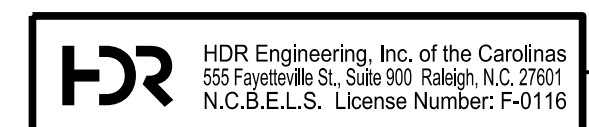


Eric Nolting 1/24/2022

STATE OF NORTH CAROLINA
 DEPARTMENT OF TRANSPORTATION
 RALEIGH

SUBSTRUCTURE BENTS 1 & 2 SECTIONS AND DETAILS

REVISIONS						SHEET NO. 303L-30	
NO.	BY:	DATE:	NO.	BY:	DATE:	TOTAL SHEETS 44	
1	--	--	3	--	--		
2	--	--	4	--	--		



DOCUMENT NOT CONSIDERED FINAL UNLESS ALL SIGNATURES COMPLETED

PLOT DRIVER: NCDOT STRUCTURES DEFAULT PLOTTER.plt PENTABLE: NCDOT STRUCTURES DEFAULT PEN.tbl
 USER: PETERSON DATE: 1/24/2022 TIME: 1:49:54 PM
 FILE: ... \403.145.B5898B3186.SMU.B1.030_430110.dgn

DES BY: <u>M. NEHEISEL</u>	DATE: <u>06/21</u>	DWG BY: <u>D. CARTER</u>	DATE: <u>06/21</u>
DES CHK: <u>G. MYERS</u>	DATE: <u>07/21</u>	CHK BY: <u>G. MYERS</u>	DATE: <u>07/21</u>