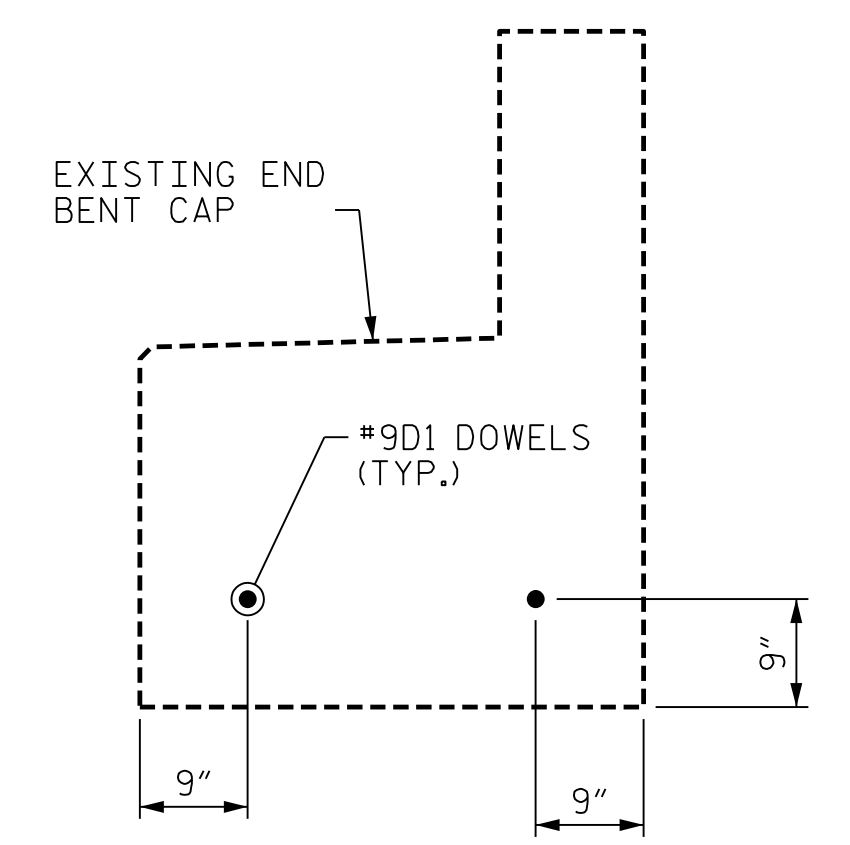


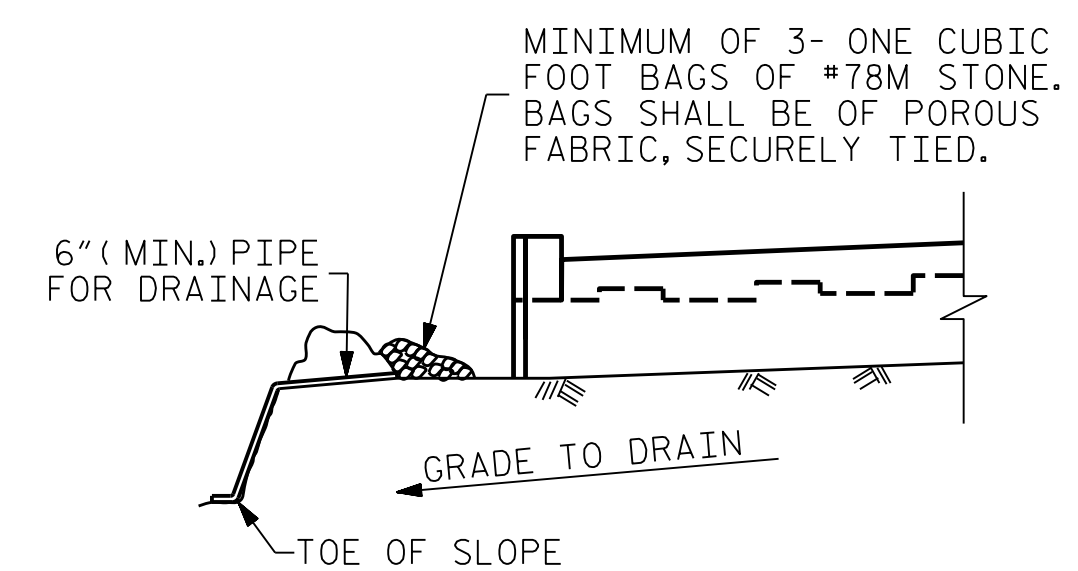
SECTION A-A

SECTION B-B

* ELEVATIONS BETWEEN BRIDGE SEAT BUILDUPS ARE SHOWN AT THIS POINT



VIEW E-E

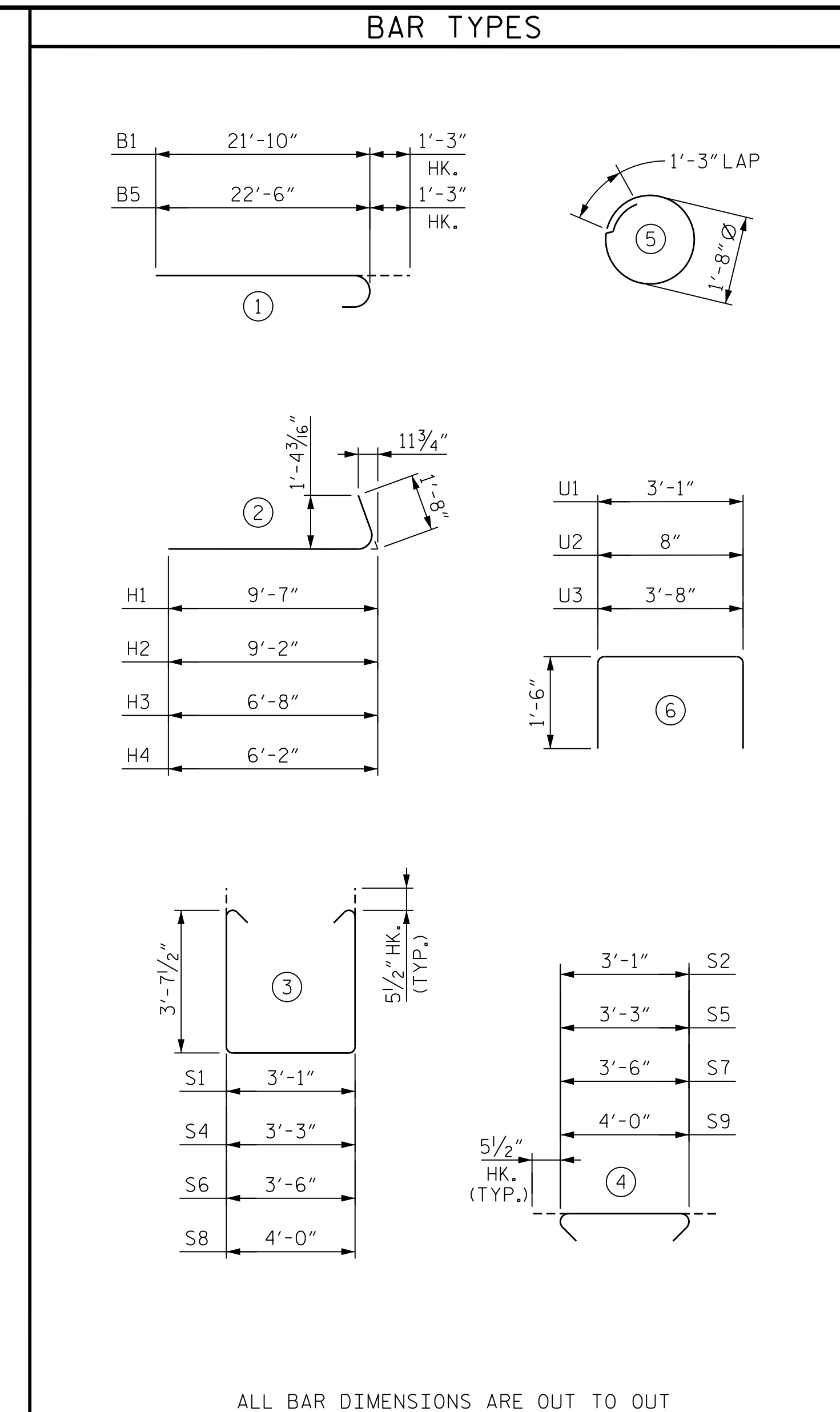


BAGGED STONE AND PIPE SHALL BE PLACED IMMEDIATELY AFTER COMPLETION OF END BENT EXCAVATION. PIPE MAY BE EITHER CONCRETE, CORRUGATED STEEL, CORRUGATED ALUMINUM ALLOY, OR CORRUGATED PLASTIC. PERFORATED PIPE WILL NOT BE ALLOWED.

BAGGED STONE SHALL REMAIN IN PLACE UNTIL THE ENGINEER DIRECTS THAT IT BE REMOVED. THE CONTRACTOR SHALL REMOVE AND DISPOSE OF SILT ACCUMULATIONS AT BAGGED STONE WHEN SO DIRECTED BY THE ENGINEER. BAGS SHALL BE REMOVED AND REPLACED WHENEVER THE ENGINEER DETERMINES THAT THEY HAVE DETERIORATED AND LOST THEIR EFFECTIVENESS.

NO SEPARATE PAYMENT WILL BE MADE FOR THIS WORK AND THE ENTIRE COST OF THIS WORK SHALL BE INCLUDED IN THE UNIT CONTRACT PRICE BID FOR THE SEVERAL PAY ITEMS.

TEMPORARY DRAINAGE AT END BENT

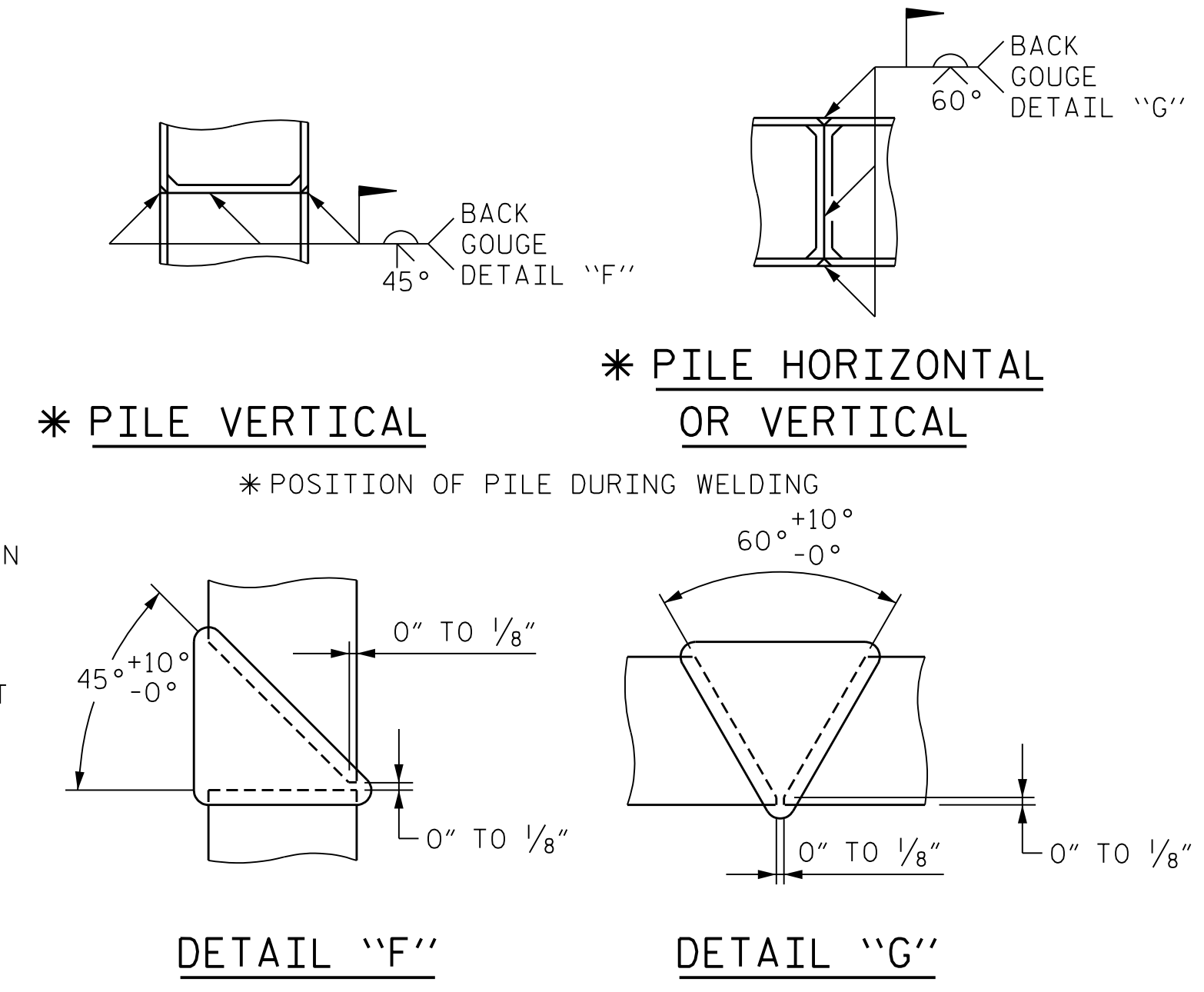


BAR TYPES

BILL OF MATERIAL						
END BENT 1						
BAR	NO.	SIZE	TYPE	LENGTH	WEIGHT	
B1	10	#9	1	23'-1"	785	
B2	16	#5	STR	21'-4"	356	
B3	10	#4	STR	3'-1"	21	
B4	8	#4	STR	21'-0"	112	
B5	10	#9	1	23'-9"	808	
B6	5	#5	STR	13'-10"	72	
B7	5	#5	STR	2'-2"	11	
B8	8	#4	STR	3'-9"	20	
D1	2	#9	STR	4'-10"	33	
H1	5	#4	2	11'-3"	38	
H2	5	#4	2	10'-10"	36	
H3	5	#4	2	8'-4"	28	
H4	5	#4	2	7'-10"	26	
H5	4	#4	STR	3'-3"	9	
K1	16	#4	STR	21'-0"	224	
S1	35	#5	3	11'-3"	411	
S2	35	#5	4	4'-0"	146	
S3	16	#4	5	6'-6"	69	
S4	1	#5	3	11'-5"	12	
S5	1	#5	4	4'-2"	4	
S6	1	#5	3	11'-8"	12	
S7	1	#5	4	4'-5"	5	
S8	1	#5	3	12'-2"	13	
S9	1	#5	4	4'-11"	5	
U1	17	#5	6	6'-1"	108	
U2	34	#4	6	3'-8"	83	
U3	3	#5	6	6'-8"	21	
V1	69	#5	STR	6'-3"	450	
V2	22	#4	STR	7'-7"	111	
REINFORCING STEEL					LBS.	4029
CLASS A CONCRETE						
POUR #1 (COLLARS, CAP, LOWER PART OF WINGS)				CU. YDS.	22.0	
POUR #2 (BACKWALL & UPPER PART OF WINGS)				CU. YDS.	3.6	
TOTAL				CU. YDS.	25.6	
▲ HP12x53 STEEL PILES					NO.	4
					LIN. FT.	240
STEEL H-PILE POINTS					NO.	4

ALL BAR DIMENSIONS ARE OUT TO OUT

▲ PILE LENGTHS ARE BASED ON ESTIMATED TIP ELEVATIONS



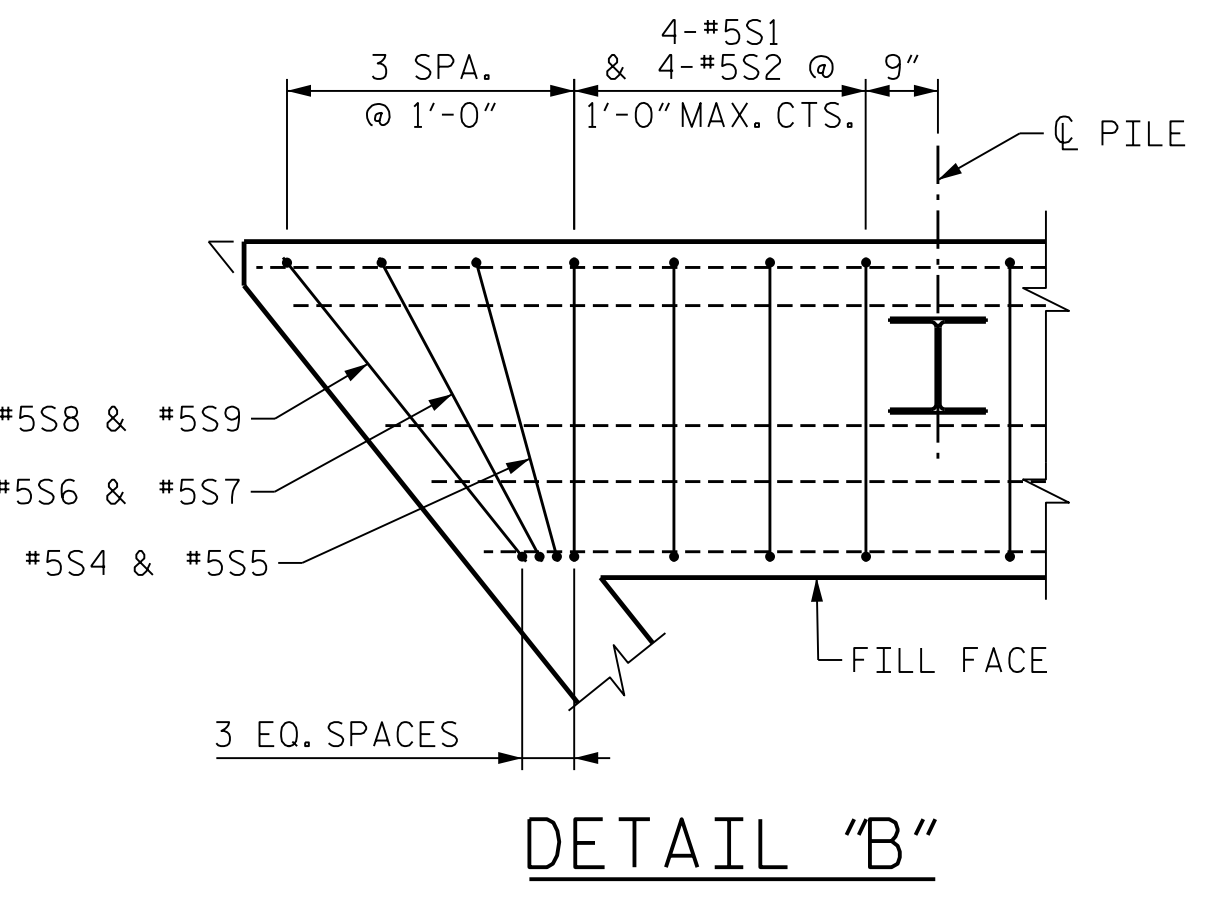
* PILE VERTICAL

* PILE HORIZONTAL OR VERTICAL

DETAIL "F"

DETAIL "G"

PILE SPLICE DETAILS



DETAIL "B"



Eric Nolting 1/24/2022

PROJECT NO. B-3186/B-5898
HAYWOOD COUNTY
 STATION: 68+82.30 ± -L-LT-

SHEET 3 OF 3

STATE OF NORTH CAROLINA
 DEPARTMENT OF TRANSPORTATION
 RALEIGH

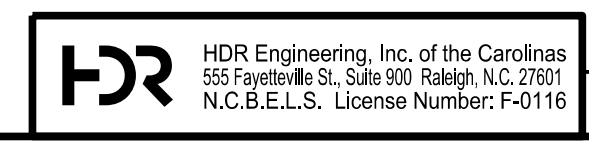
SUBSTRUCTURE
 END BENT 1
 SECTIONS AND DETAILS

REVISIONS					
NO.	BY:	DATE:	NO.	BY:	DATE:
1	--	--	3	--	--
2	--	--	4	--	--

SHEET NO.
SO3L-2B
TOTAL SHEETS
44

PLOT DRIVER: NCDOT STRUCTURES DEFAULT PLOTTER.plt
 PENTABLE: NCDOT STRUCTURES DEFAULT PEN.tbl
 USER: PETERSON
 DATE: 1/24/2022
 TIME: 4:28:36 PM
 FILE: ... \403.135-B5898B3186-SMU-E1.028-430110.dgn

DES BY: <u>B. ROGERS</u>	DATE: <u>06/21</u>	DWG BY: <u>B. PETERSON</u>	DATE: <u>06/21</u>
DES CHK: <u>F. CORDOVA</u>	DATE: <u>06/21</u>	CHK BY: <u>F. CORDOVA</u>	DATE: <u>06/21</u>



DOCUMENT NOT CONSIDERED FINAL
 UNLESS ALL SIGNATURES COMPLETED