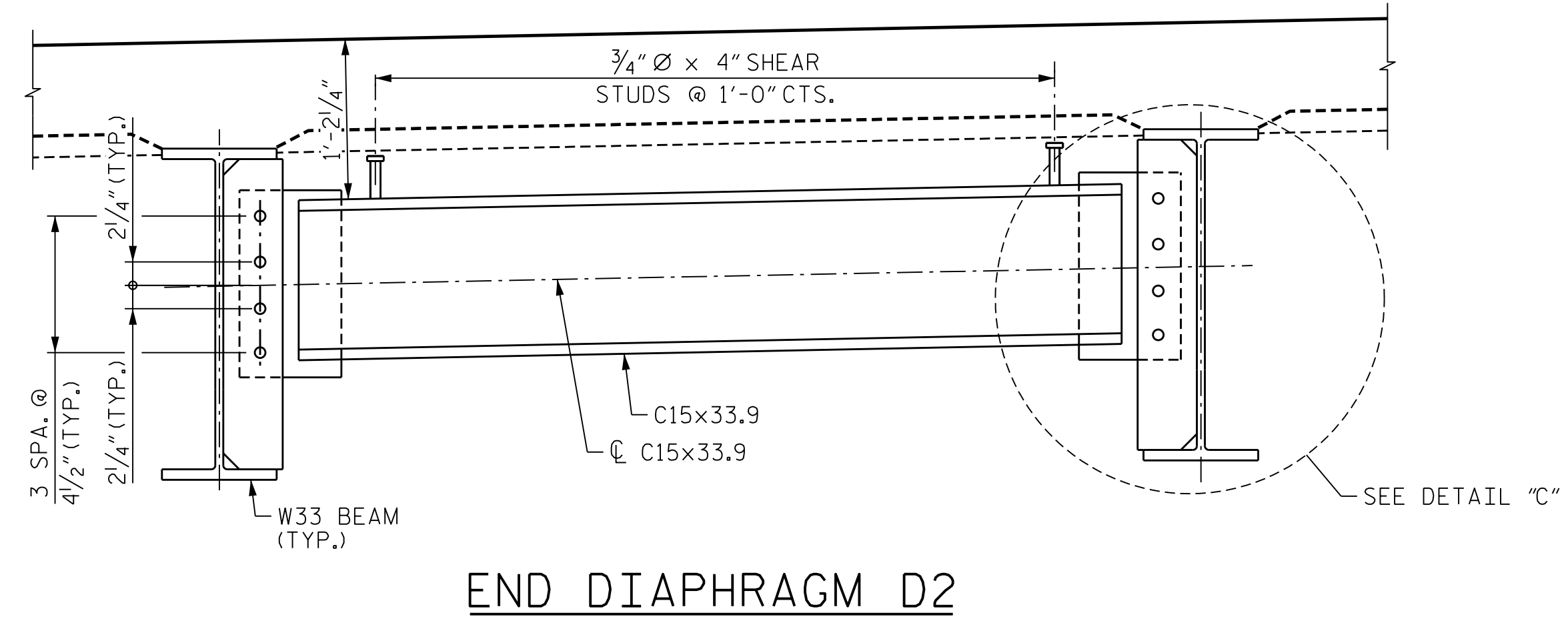
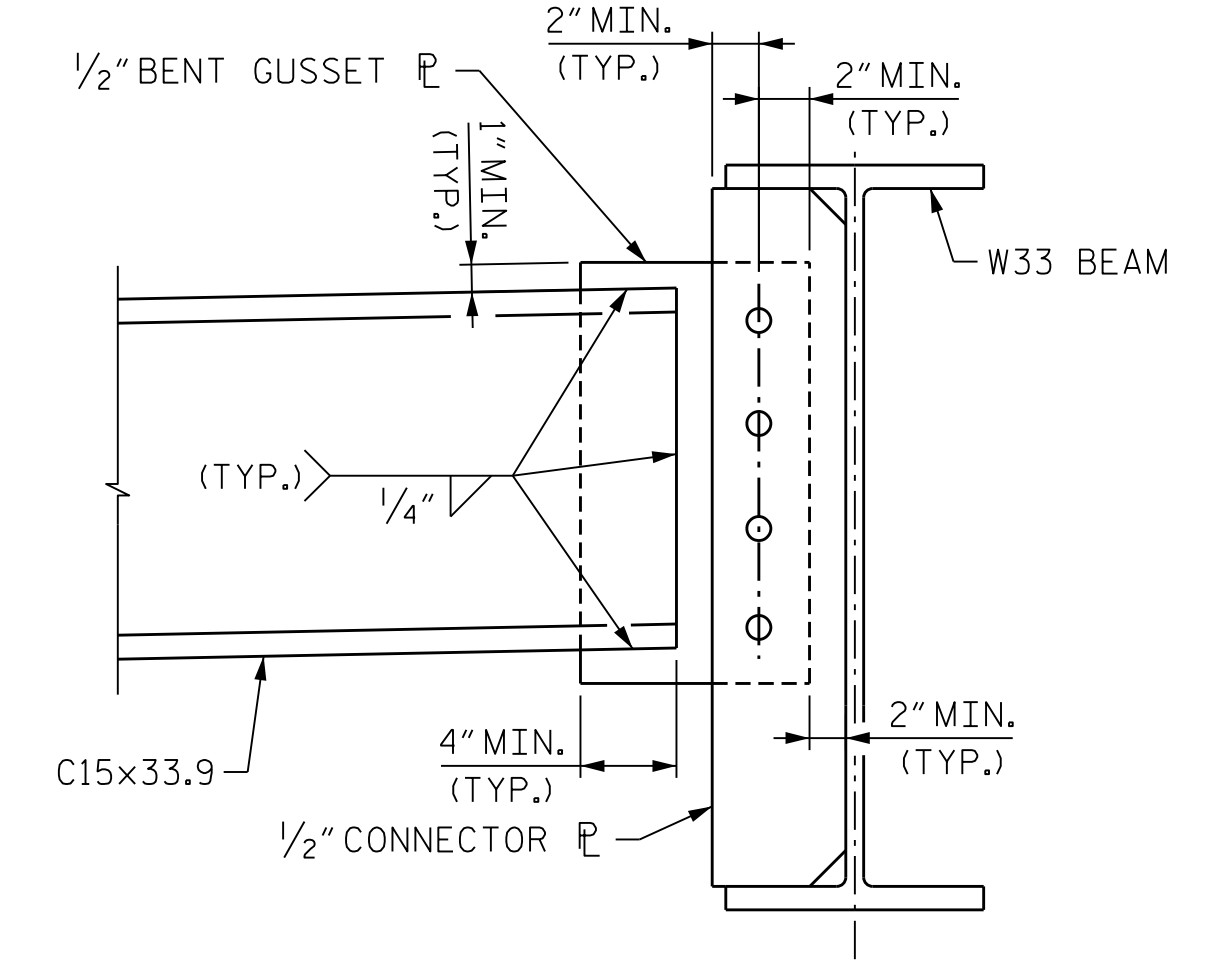


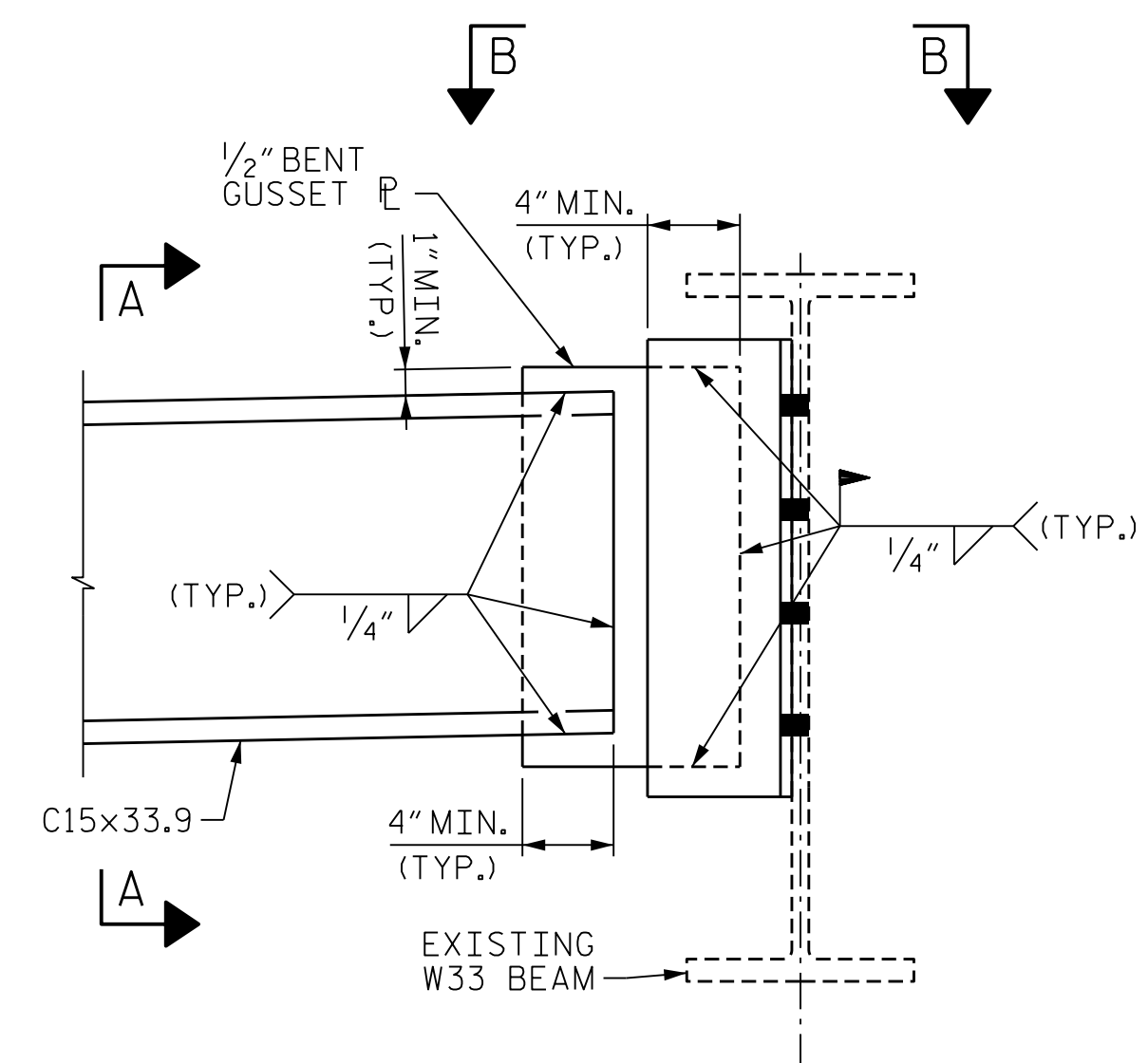
END DIAPHRAGM D1



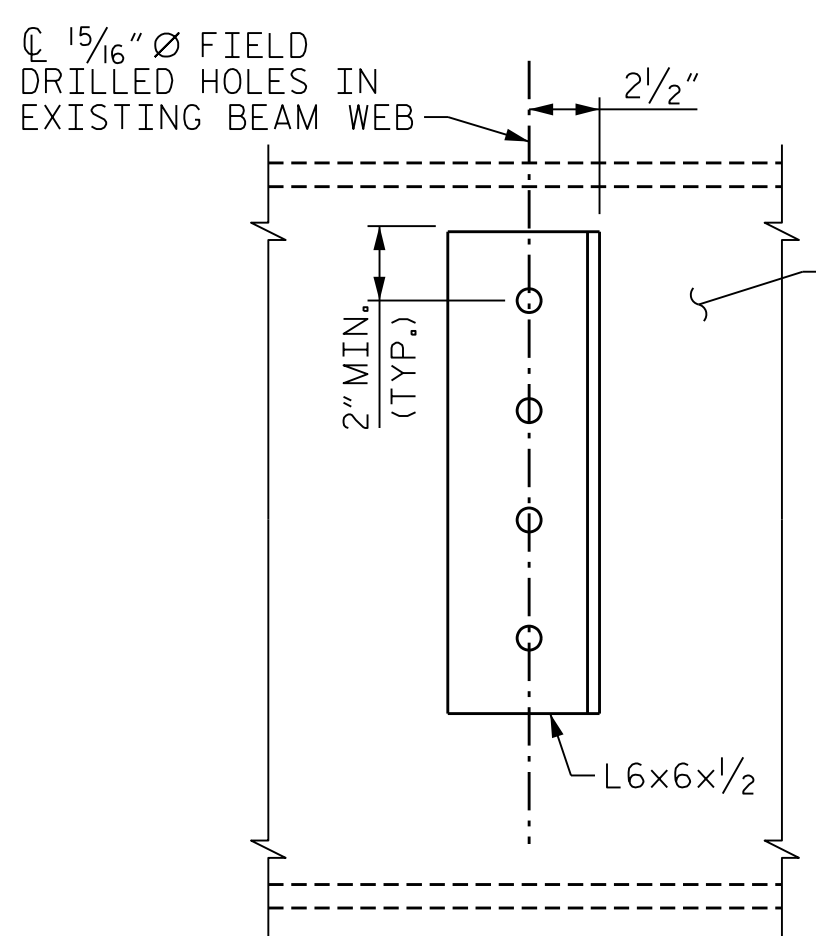
END DIAPHRAGM D2



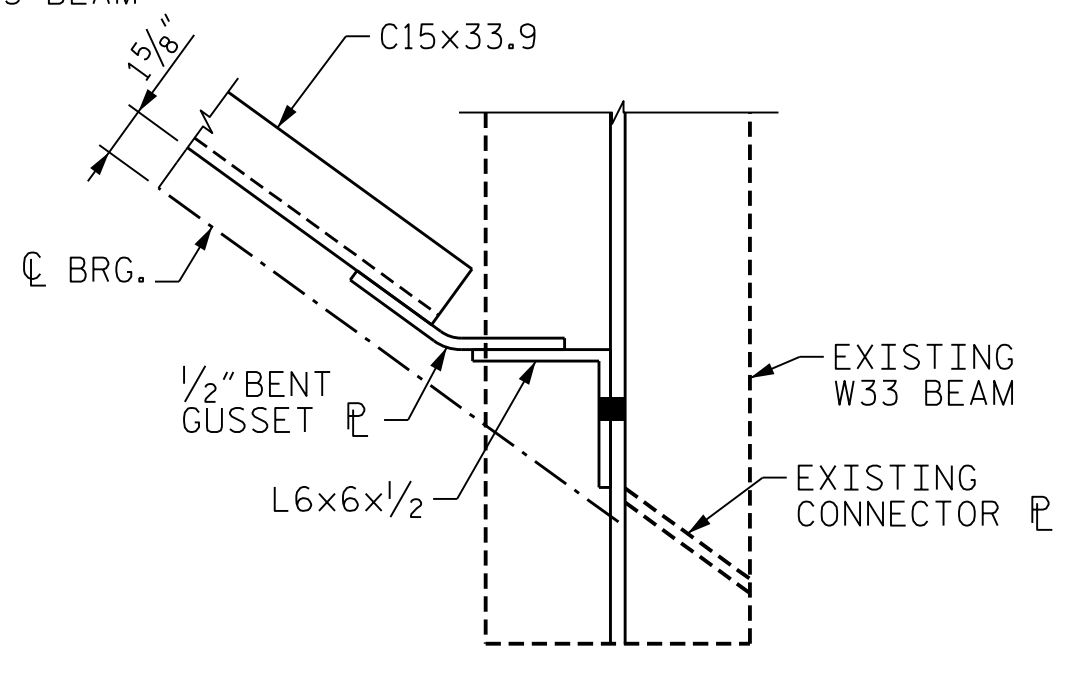
DETAIL "C"



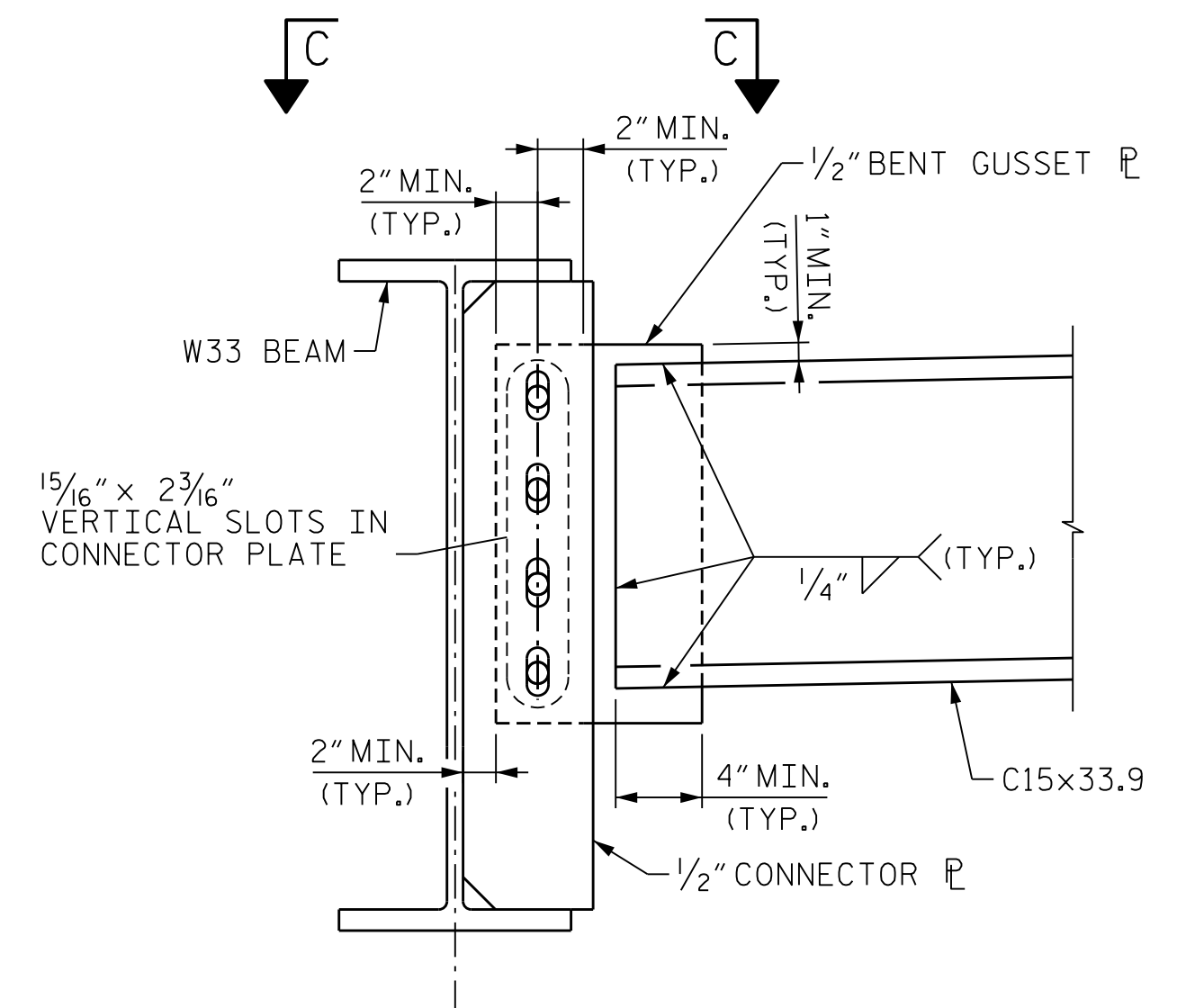
DETAIL "A"



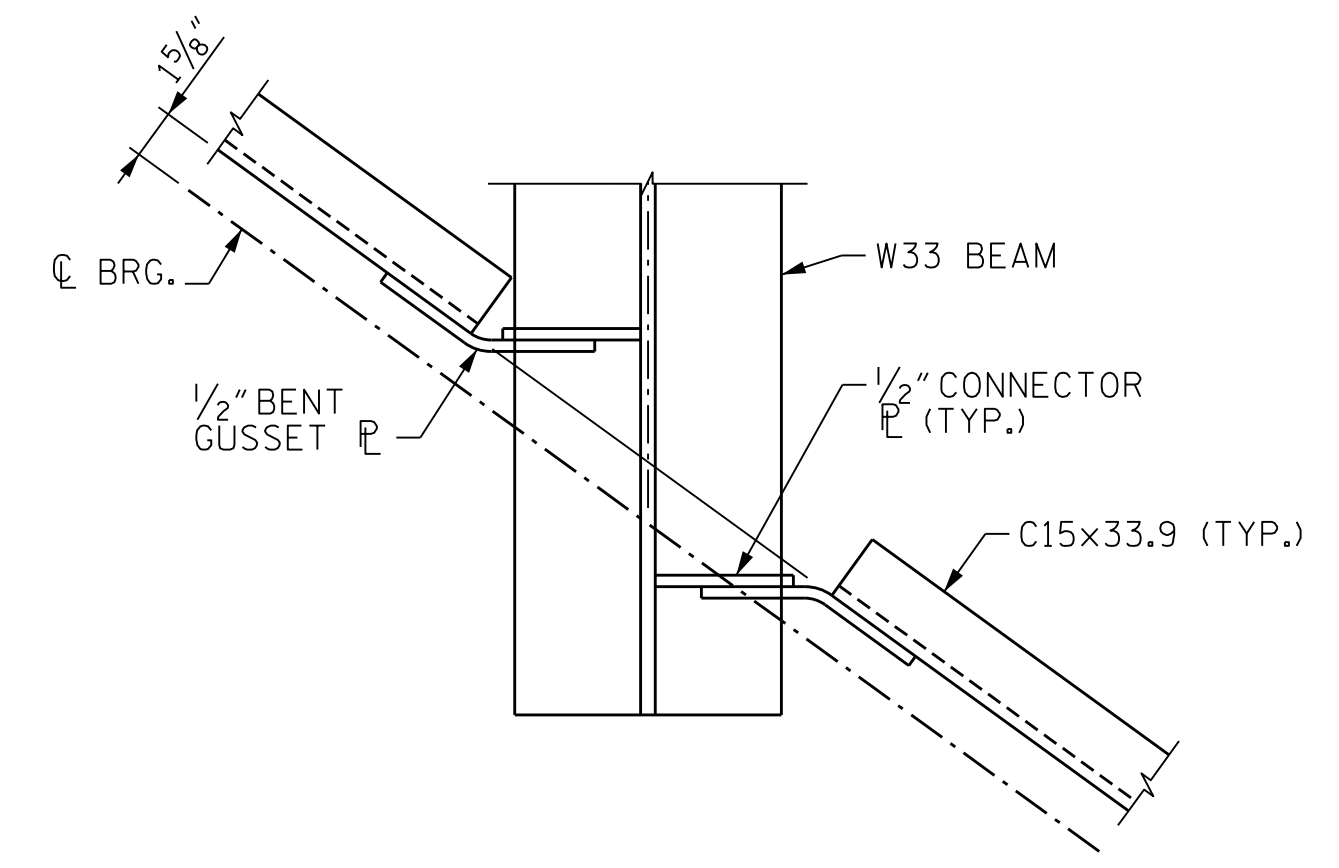
VIEW A-A



VIEW B-B



DETAIL "B"



VIEW C-C

PROJECT NO. B-3186/B-5898
HAYWOOD COUNTY
 STATION: 68+82.30± -L-LT-

SHEET 2 OF 5



Eric Nolting 1/24/2022

STATE OF NORTH CAROLINA
 DEPARTMENT OF TRANSPORTATION
 RALEIGH

**SUPERSTRUCTURE
 STRUCTURAL STEEL
 DETAILS**

DES BY: E. NOLTING	DATE: 04/21	DWG BY: B. PETERSON	DATE: 06/21
DES CHK: B. ROGERS	DATE: 05/21	CHK BY: B. ROGERS	DATE: 06/21



DOCUMENT NOT CONSIDERED FINAL UNLESS ALL SIGNATURES COMPLETED

REVISIONS					
NO.	BY:	DATE:	NO.	BY:	DATE:
1	--	--	3	--	--
2	--	--	4	--	--

SHEET NO. 303L-16
TOTAL SHEETS 44

PLOT DRIVER: NCDOT_STRUCTURES_DEFAULT_PLOTTER.plt
 PENTABLE: NCDOT_STRUCTURES_DEFAULT_PEN.tbl
 USER: PETERSON DATE: 1/24/2022 TIME: 1:45:26 PM
 FILE: ... \403.075.B5898B3186.SMU.SS.016.430110.dgn