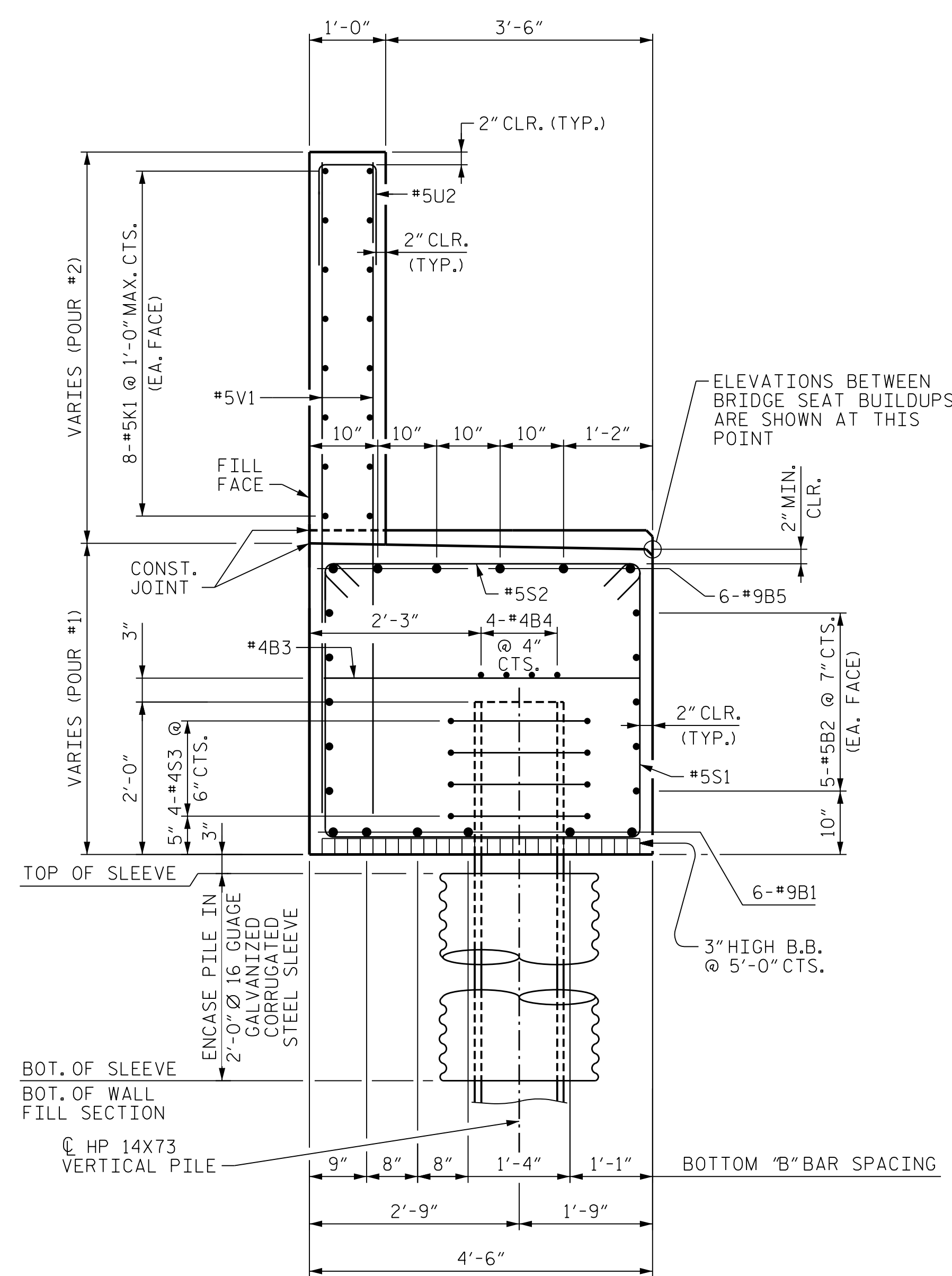
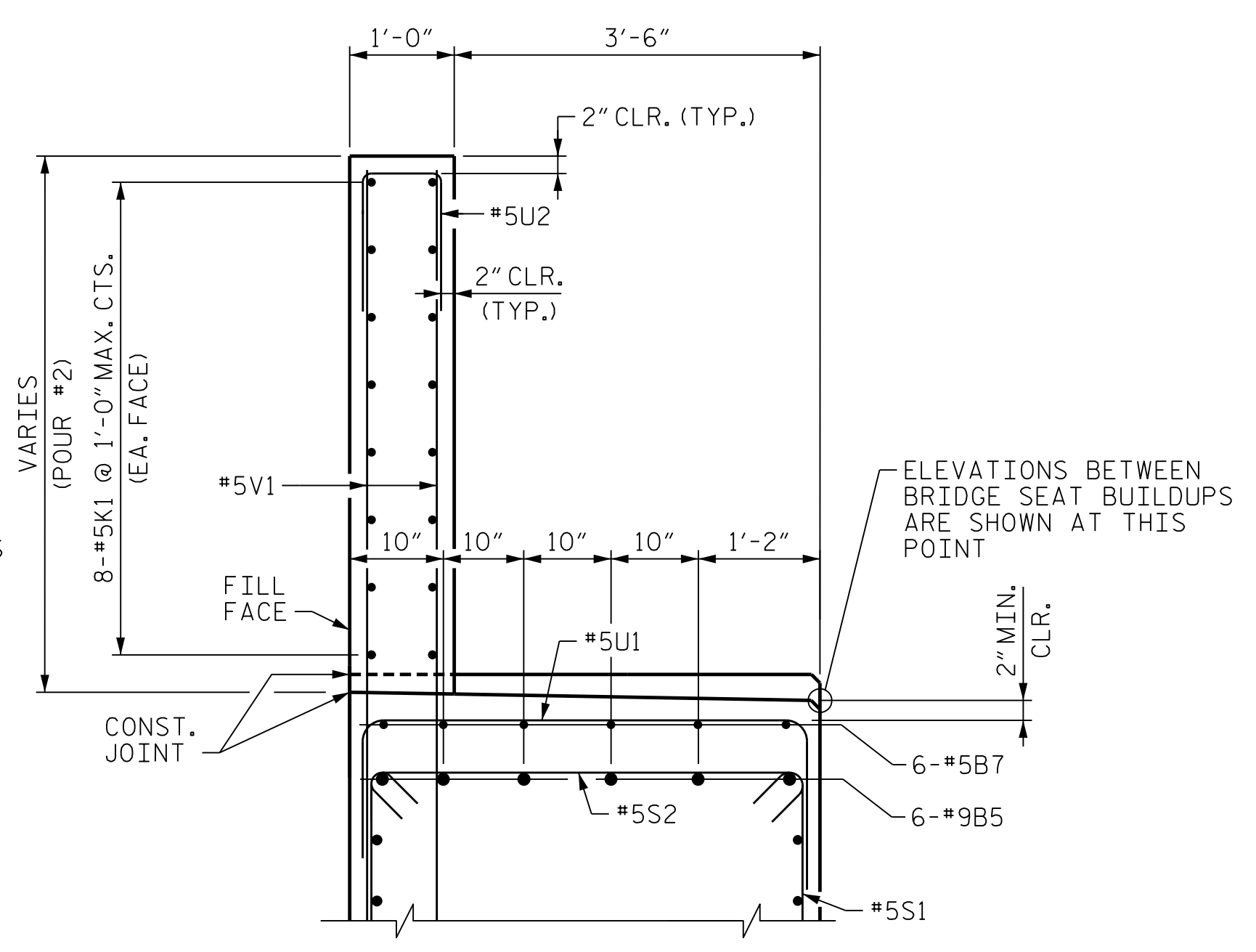


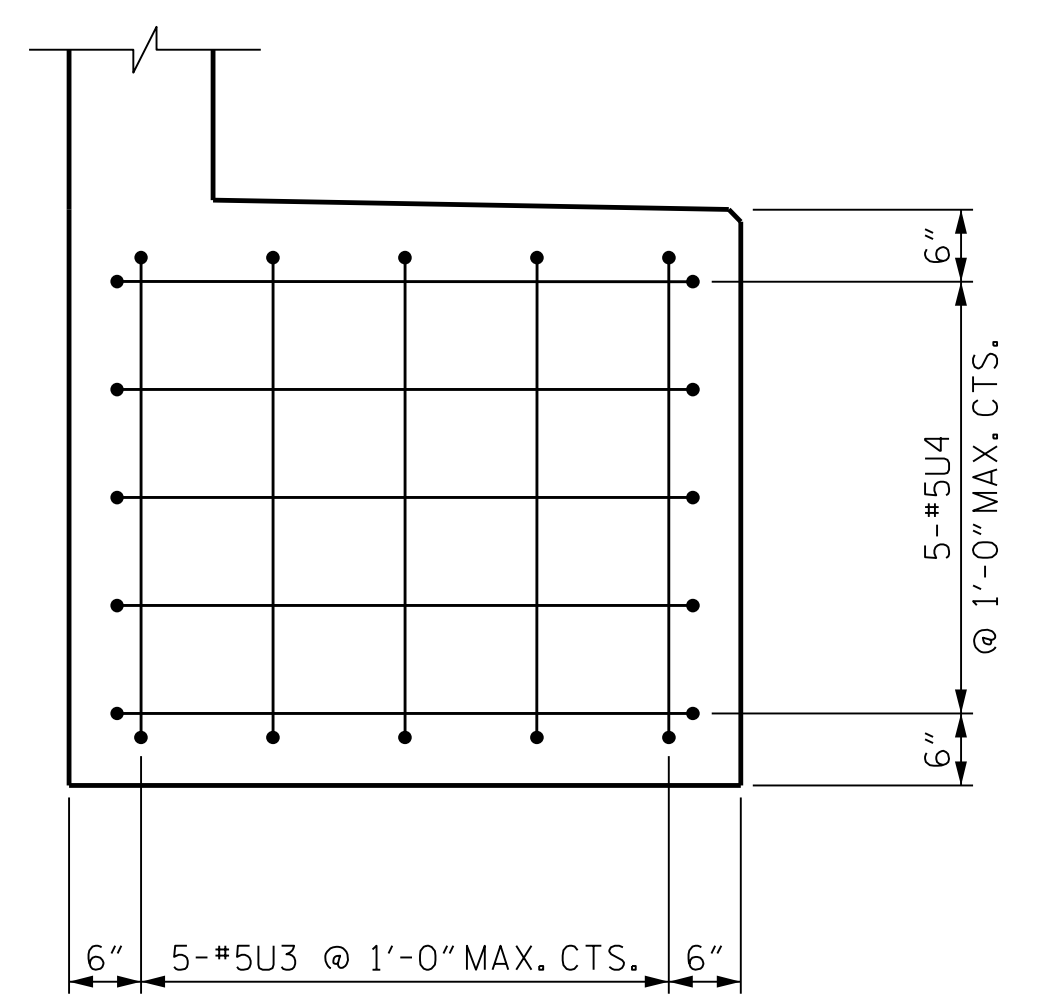
PLOT DRIVER: NCDOT STRUCTURES DEFAULT PLOTTER.plt PENTABLE: NCDOT STRUCTURES DEFAULT PEN.tbl  
 USER: PETERSON DATE: 1/24/2022 TIME: 1:36:03 PM  
 FILE: ... \402\_210\_B3186-B5898\_SMLL.E2\_043\_430168.dgn



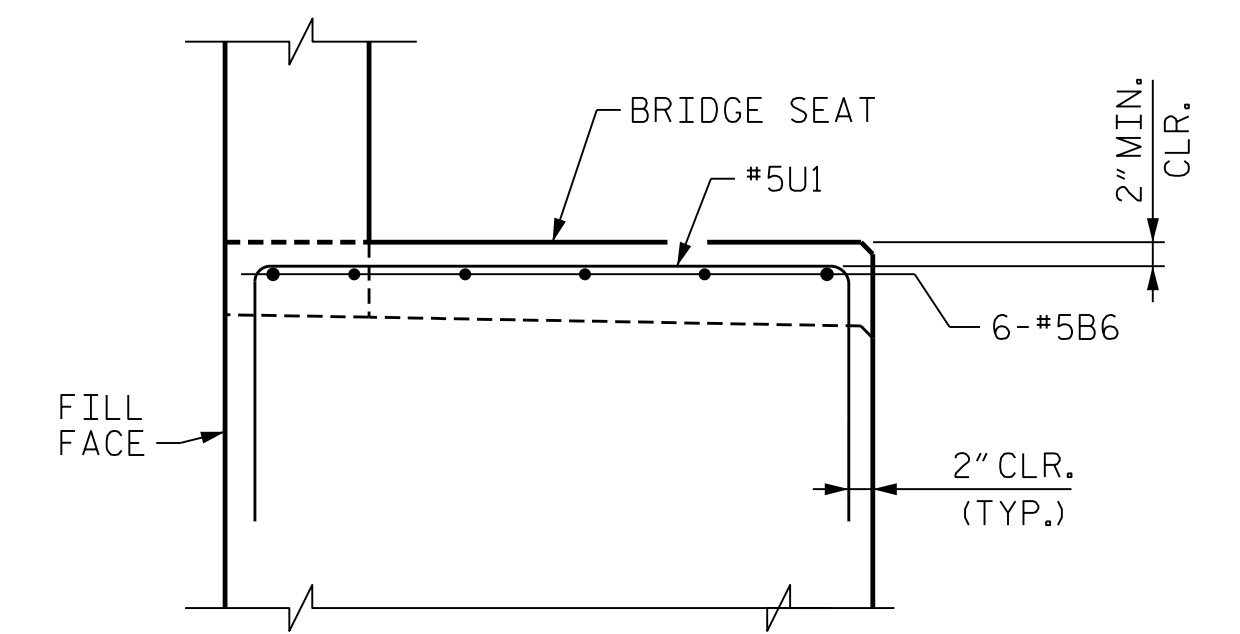
**SECTION A-A**



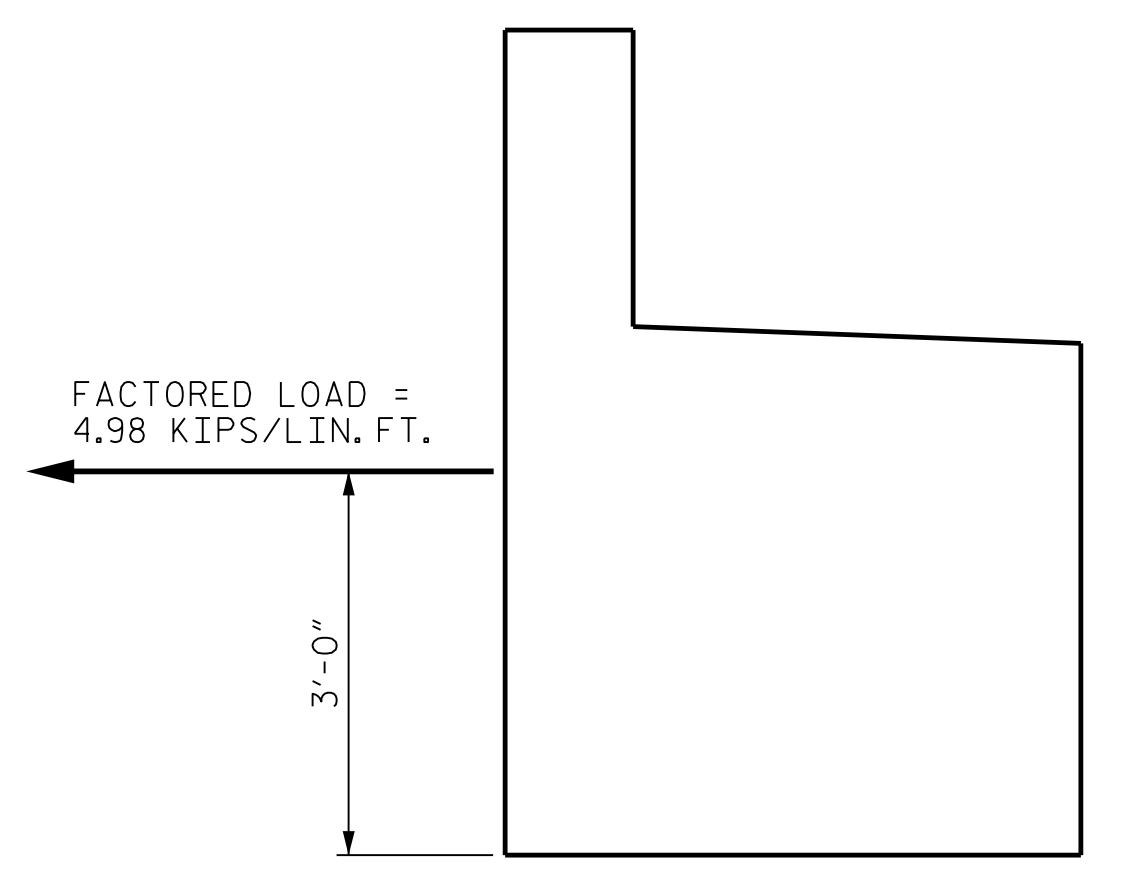
**PARTIAL SECTION B-B**



**VIEW D-D**



**PARTIAL SECTION C-C**  
(TYPICAL WHERE INDICATED AT BRIDGE SEATS)



**TIE BACK DETAIL**  
(SEE MSE RETAINING WALL PLANS FOR NOTES)

**BAR TYPES**

**BILL OF MATERIAL**

BAR NO.	NO.	SIZE	TYPE	LENGTH	WEIGHT
B1	12	#9		38'-7"	1575
B2	20	#5	STR.	36'-9"	767
B3	18	#4	STR.	4'-2"	51
B4	8	#4	STR.	36'-6"	196
B5	12	#9		39'-2"	1598
B6	18	#5	STR.	2'-5"	46
B7	6	#5	STR.	20'-4"	128
B8	6	#5	STR.	15'-0"	94
H1	28	#5		5'-2"	151
H2	28	#5	STR.	5'-9"	168
H3	8	#5		6'-11"	58
K1	32	#5	STR.	36'-9"	1227
K2	2	#5	STR.	2'-9"	6
K3	2	#5	STR.	3'-6"	8
K4	4	#5	STR.	2'-9"	12
S1	69	#5		12'-4"	888
S2	69	#5		5'-1"	366
S3	48	#4		7'-7"	244
U1	43	#5		7'-2"	322
U2	64	#5		3'-8"	245
U3	5	#5		7'-0"	37
U4	5	#5		7'-2"	38
V1	134	#5	STR.	10'-4"	1445
V2	23	#5	STR.	12'-0"	288
V3	7	#5	STR.	12'-7"	92
<b>REINFORCING STEEL</b>					<b>LBS. 10,050</b>
<b>CLASS A CONCRETE</b>					
POUR #1 (CAP, LOWER PART OF WINGS)				CU. YDS.	50.6
POUR #2 (BACKWALL & UPPER PART OF WINGS)				CU. YDS.	22.1
<b>TOTAL</b>				CU. YDS.	72.7
<b>HP 14x73 STEEL PILES</b>		NO. 12	LIN. FT.	840	
<b>STEEL PILE POINTS</b>				EA.	12
<b>PILE DRIVING EQUIPMENT SETUP FOR HP14x73 STEEL PILES</b>				EA.	12

ALL BAR DIMENSIONS ARE OUT TO OUT

**NOTES**

THE TOP SURFACE OF THE END BENT CAP SHALL BE CURED IN ACCORDANCE WITH THE STANDARD SPECIFICATIONS EXCEPT THAT THE MEMBRANE CURING COMPOUND METHOD SHALL NOT BE USED.

THE TOP SURFACE OF THE END BENT CAP EXCEPT THE BRIDGE SEAT BUILDUPS SHALL BE SLOPED TRANSVERSELY FROM THE FILL FACE TO THE BACK FACE AT THE RATE OF 2%.

STIRRUPS IN CAP MAY BE SHIFTED AS NECESSARY TO CLEAR ANCHOR BOLTS.

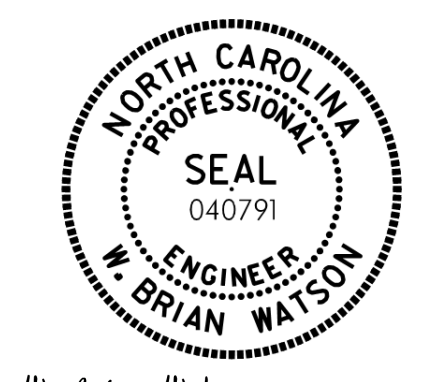
BACKWALL SHALL BE PLACED BEFORE APPLYING THE PROTECTIVE COATING.

SEE "GENERAL DRAWING FOUNDATION LAYOUT" FOR ADDITIONAL NOTES FOR DRIVING PILES.

THE 2'-0" Ø 16 GAUGE GALVANIZED CORRUGATED STEEL SLEEVE SHALL MEET THE REQUIREMENTS SPECIFIED IN ARTICLE 1032-3 OF THE STANDARD SPECIFICATIONS AND SHALL BE GALVANIZED IN ACCORDANCE WITH SECTION 1076 OF THE STANDARD SPECIFICATIONS.

FOR PILE SPLICE DETAILS AND TEMPORARY DRAINAGE AT END BENT DETAIL, SEE "SUBSTRUCTURE END BENT 1 CHEEKWALL DETAILS" SHEET.

PROJECT NO. B-3186/B-5898  
HAYWOOD COUNTY  
 STATION: 27+54.43 -Y1RT-  
 SHEET 3 OF 3



W. Brian Watson 1/24/2022

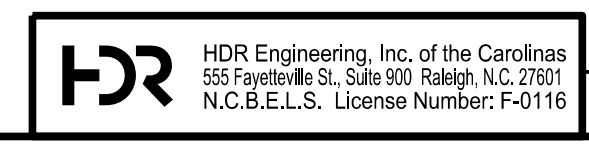
STATE OF NORTH CAROLINA  
 DEPARTMENT OF TRANSPORTATION  
 RALEIGH

**SUBSTRUCTURE  
 END BENT 2  
 SECTIONS AND DETAILS**

REVISIONS					
NO.	BY:	DATE:	NO.	BY:	DATE:
1	--	--	3	--	--
2	--	--	4	--	--

SHEET NO. S02-43  
 TOTAL SHEETS 48

DES BY: N. DAVIS	DATE: 06/21	DWG BY: B. PETERSON	DATE: 06/21
DES CHK: R. BECK	DATE: 07/21	CHK BY: R. BECK	DATE: 07/21



**DOCUMENT NOT CONSIDERED FINAL  
 UNLESS ALL SIGNATURES COMPLETED**