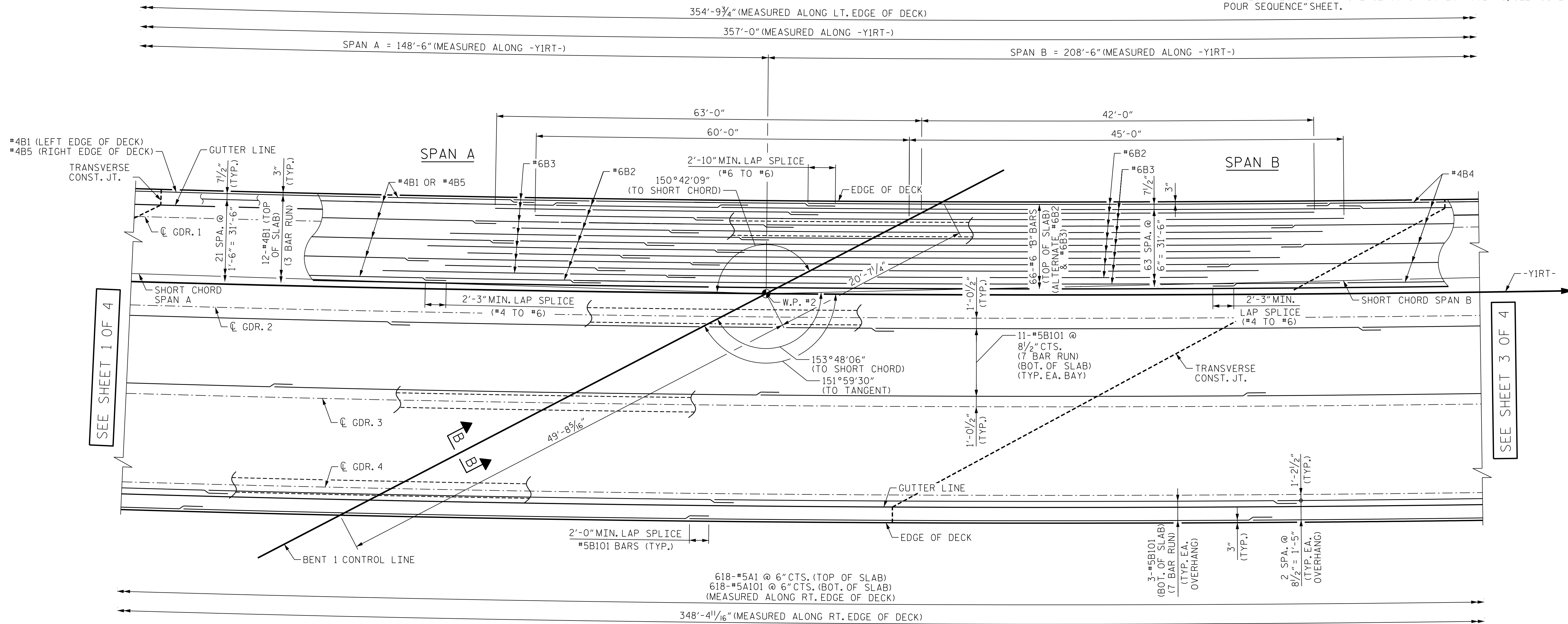


NOTES

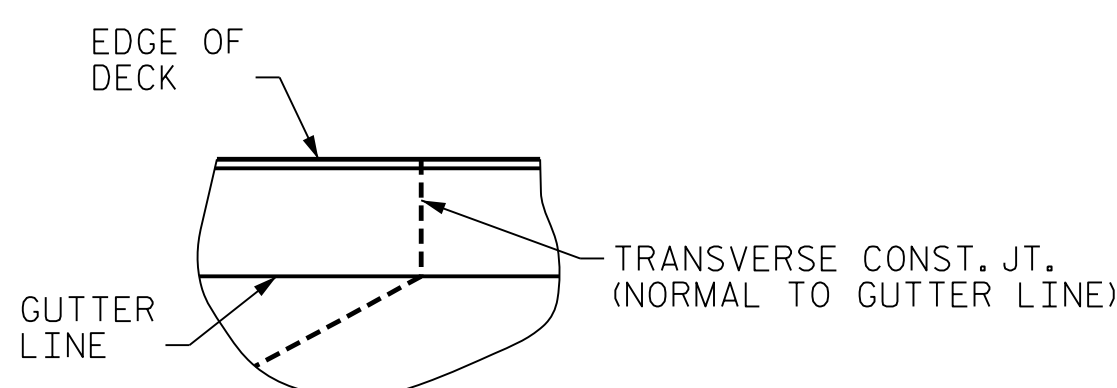
- FOR SECTION B-B, SEE "SUPERSTRUCTURE TYPICAL SECTION" SHEET.
- SEE "SUPERSTRUCTURE PLAN OF SPANS ARC OFFSETS" SHEET FOR OUTSIDE EDGE OF DECK CURVE OFFSETS.
- FOR REINFORCING STEEL IN CONCRETE BARRIER RAIL, SEE "SUPERSTRUCTURE CONCRETE BARRIER RAIL" SHEETS.
- #5 "A" BARS ARE TO BE PLACED RADIALLY SPACED @ 6" CTS. ALONG RIGHT OUTSIDE EDGE OF SUPERSTRUCTURE.
- FOR DECK POURING SEQUENCE SEE "SUPERSTRUCTURE POUR SEQUENCE" SHEET.
- FOR LOCATION OF TRANSVERSE CONSTRUCTION JOINTS, SEE "SUPERSTRUCTURE POUR SEQUENCE" SHEET.



PARTIAL PLAN OF SPANS - SPAN A & B

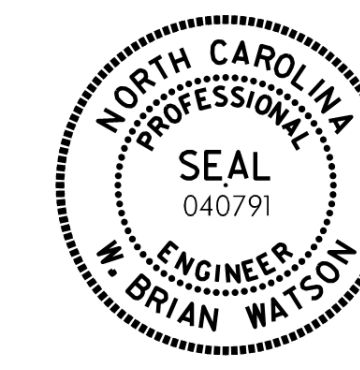
PROJECT NO. B-3186/B-5898
HAYWOOD COUNTY
 STATION: 27+54.43 -Y1RT-

SHEET 2 OF 4



DETAIL "E"

(TYPICAL EACH TRANSVERSE CONSTRUCTION JOINT)



STATE OF NORTH CAROLINA
 DEPARTMENT OF TRANSPORTATION
 RALEIGH

**SUPERSTRUCTURE
 PLAN OF SPANS**

DES BY: S. NIFONG	DATE: 04/21	DWG BY: M. SELLS	DATE: 04/21
DES CHK: H. ABU NIMEH	DATE: 07/21	CHK BY: H. ABU NIMEH	DATE: 07/21



W. Brian Watson 1/24/2022

DOCUMENT NOT CONSIDERED FINAL
 UNLESS ALL SIGNATURES COMPLETED

REVISIONS					
NO.	BY:	DATE:	NO.	BY:	DATE:
1	--	--	3	--	--
2	--	--	4	--	--

SHEET NO. 502-09
TOTAL SHEETS 48

PLOT DRIVER: NCDOT_STRUCTURE_DEFAULT_PLOTTER.plt
 PENTABLE: NCDOT_STRUCTURE_DEFAULT_PEN.tbl
 USER: PETERSON
 DATE: 1/24/2022
 TIME: 1:26:42 PM
 FILE: ... \402_040_B3186-B5898_SMJ_S1_009_430168.dgn