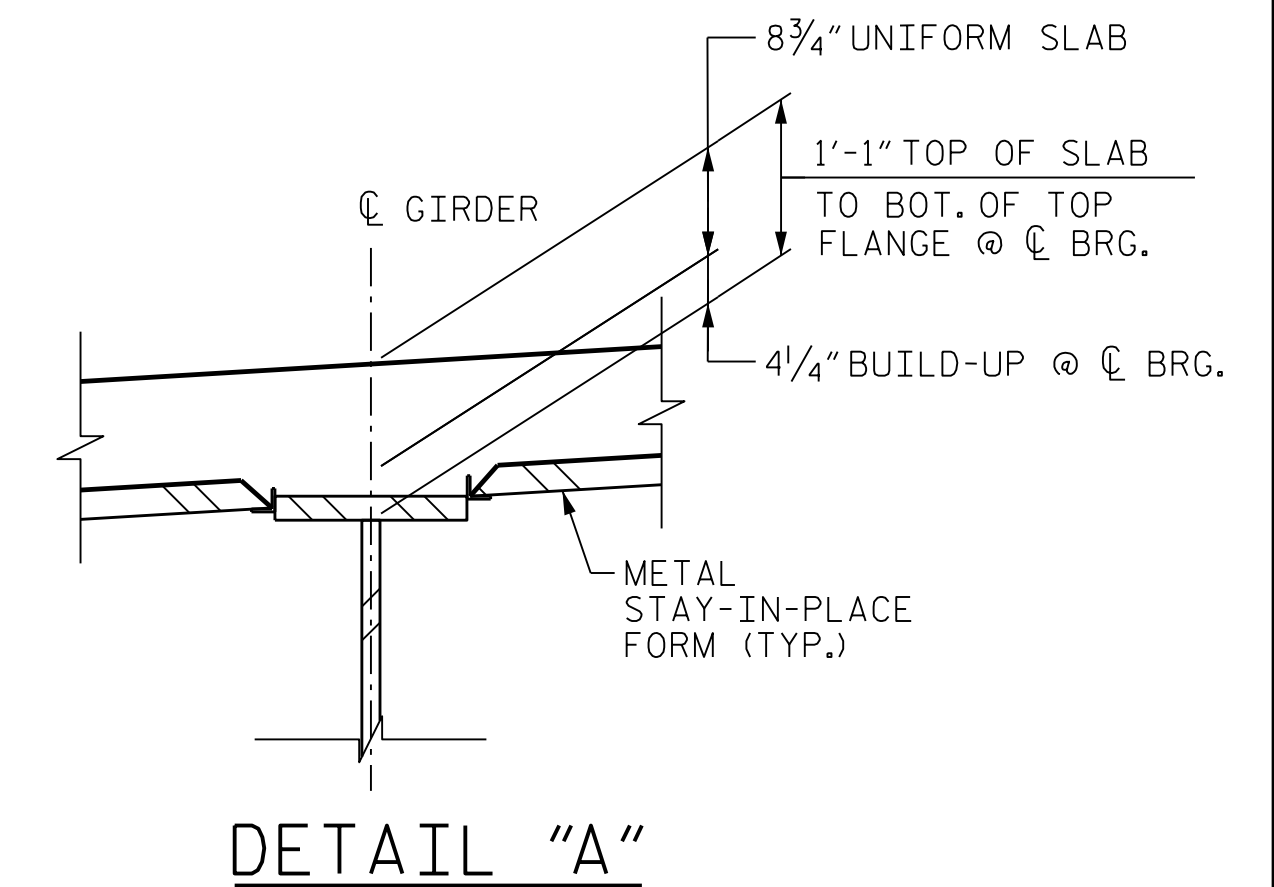


SECTION AT INTERMEDIATE & BENT DIAPHRAGM

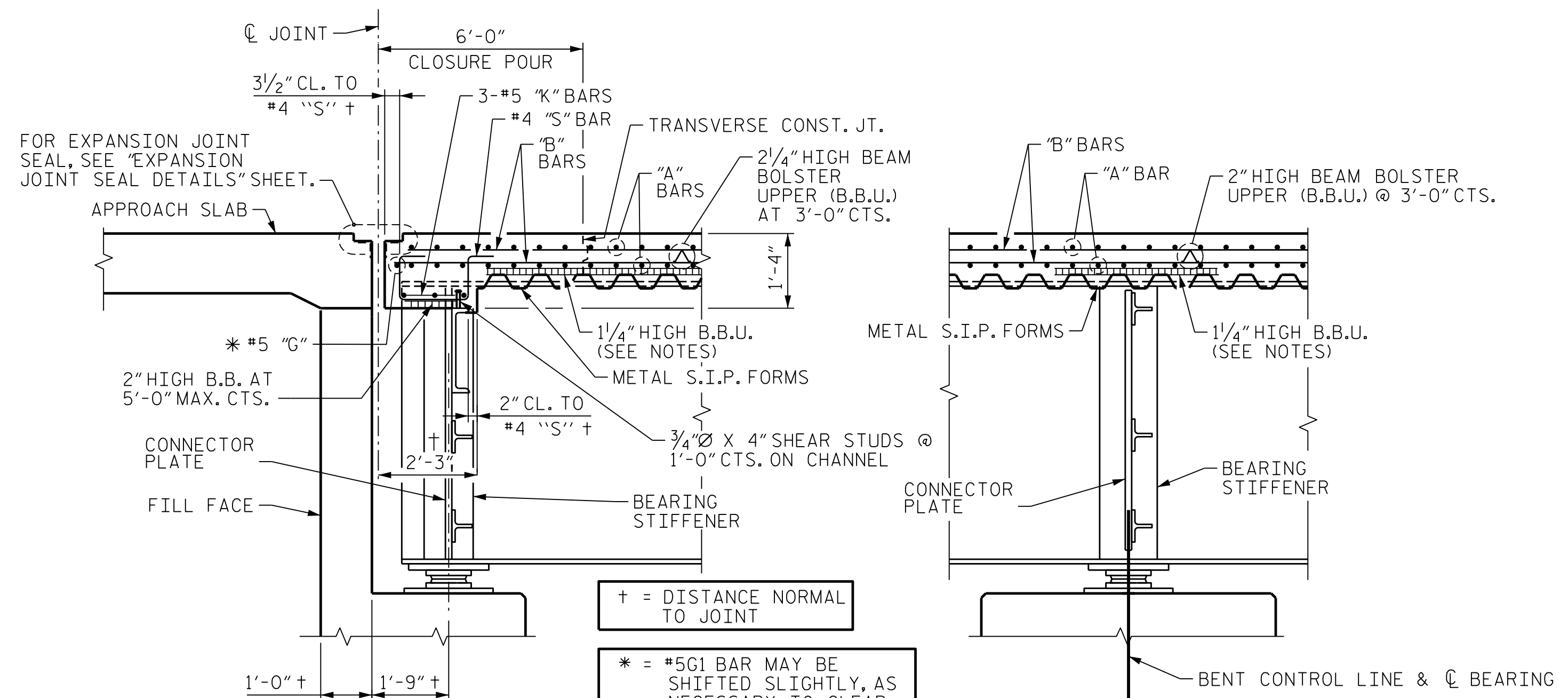
SECTION AT END DIAPHRAGM

SECTION SHOWN AT INTERMEDIATE DIAPHRAGM, FOR BENT DIAPHRAGM DETAILS, SEE SUPERSTRUCTURE STRUCTURAL STEEL DETAILS

(TYP. @ END BENT 1 & END BENT 2)



DETAIL "A"



SECTION A-A

SECTION B-B

(TYP. @ END BENT 1 AND END BENT 2)

(AT BENT 1)

+ = DISTANCE NORMAL TO JOINT

* = #5G1 BAR MAY BE SHIFTED SLIGHTLY, AS NECESSARY, TO CLEAR REINFORCING STEEL & STIRRUPS

NOTES

PROVIDE 1 1/4" HIGH BEAM BOLSTER UPPER AT 4'-0" CTS. ATOP THE METAL STAY-IN-PLACE FORMS TO SUPPORT THE BOTTOM MAT OF "A" BARS. WHEN USING REMOVABLE FORMS, PROVIDE CONTINUOUS HIGH CHAIRS FOR METAL DECK (C.H.C.M.) AT 4'-0" CTS. WITH A HEIGHT TO SUPPORT THE BOTTOM MAT OF "A" BARS A CLEAR DISTANCE OF 2 1/2" ABOVE THE TOP OF THE REMOVABLE FORM.

FOR EXPANSION JOINT SEALS, SEE SPECIAL PROVISIONS.

METAL STAY-IN-PLACE FORMS SHALL NOT BE WELDED TO GIRDER FLANGES IN THE ZONES REQUIRING CHARPY V-NOTCH TEST. SEE STRUCTURAL STEEL DETAILS SHEETS.

PREVIOUSLY CAST CONCRETE IN A CONTINUOUS UNIT SHALL HAVE ATTAINED A MINIMUM COMPRESSIVE STRENGTH OF 3,000 PSI BEFORE ADDITIONAL CONCRETE IS CAST IN THE UNIT.

STRUCTURAL STEEL ERECTION IN A CONTINUOUS UNIT SHALL BE COMPLETE BEFORE FALSEWORK OR FORMS ARE PLACED ON THE UNIT.

THE CONTRACTOR MAY, WHEN NECESSARY, PROPOSE A SCHEME FOR AVOIDING INTERFERENCE BETWEEN METAL STAY-IN-PLACE FORM SUPPORTS OR FORMS AND BEAM/GIRDER STIFFENERS OR CONNECTOR PLATES. THE PROPOSAL SHALL BE INDICATED, AS APPROPRIATE, ON EITHER THE STEEL WORKING DRAWINGS OR THE METAL STAY-IN-PLACE FORM WORKING DRAWINGS.

BARRIER RAIL IN A CONTINUOUS UNIT SHALL NOT BE CAST UNTIL ALL SLAB CONCRETE IN THAT UNIT HAS BEEN CAST AND HAS REACHED A MINIMUM COMPRESSIVE STRENGTH OF 3,000 PSI.

ALL DIMENSIONS SHOWN ARE HORIZONTAL OR VERTICAL UNLESS OTHERWISE NOTED.

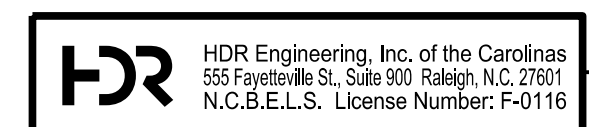
PROJECT NO. B-3186/B-5898
HAYWOOD COUNTY
 STATION: 27+54.43 -Y1RT-



W. Brian Watson 1/24/2022

STATE OF NORTH CAROLINA
 DEPARTMENT OF TRANSPORTATION
 RALEIGH
**SUPERSTRUCTURE
 TYPICAL SECTION**

REVISIONS						SHEET NO. 502-07
NO.	BY:	DATE:	NO.	BY:	DATE:	
1	--	--	3	--	--	TOTAL SHEETS 48
2	--	--	4	--	--	



DOCUMENT NOT CONSIDERED FINAL UNLESS ALL SIGNATURES COMPLETED

PLOT DRIVER: NCDOT_STRUCTURES_DEFAULT_PLOTTER.plt PENTABLE: NCDOT_STRUCTURES_DEFAULT_PEN.tbl
 USER: PETERSO DATE: 1/24/2022 TIME: 1:25:36 PM
 FILE: ... \402_030_B3186-B5898_SMU_TS_007_430168.dgn

DES BY: <u>S. NIFONG</u>	DATE: <u>04/21</u>	DWG BY: <u>M. SELLS</u>	DATE: <u>04/21</u>
DES CHK: <u>H. ABU NIMEH</u>	DATE: <u>07/21</u>	CHK BY: <u>H. ABU NIMEH</u>	DATE: <u>07/21</u>