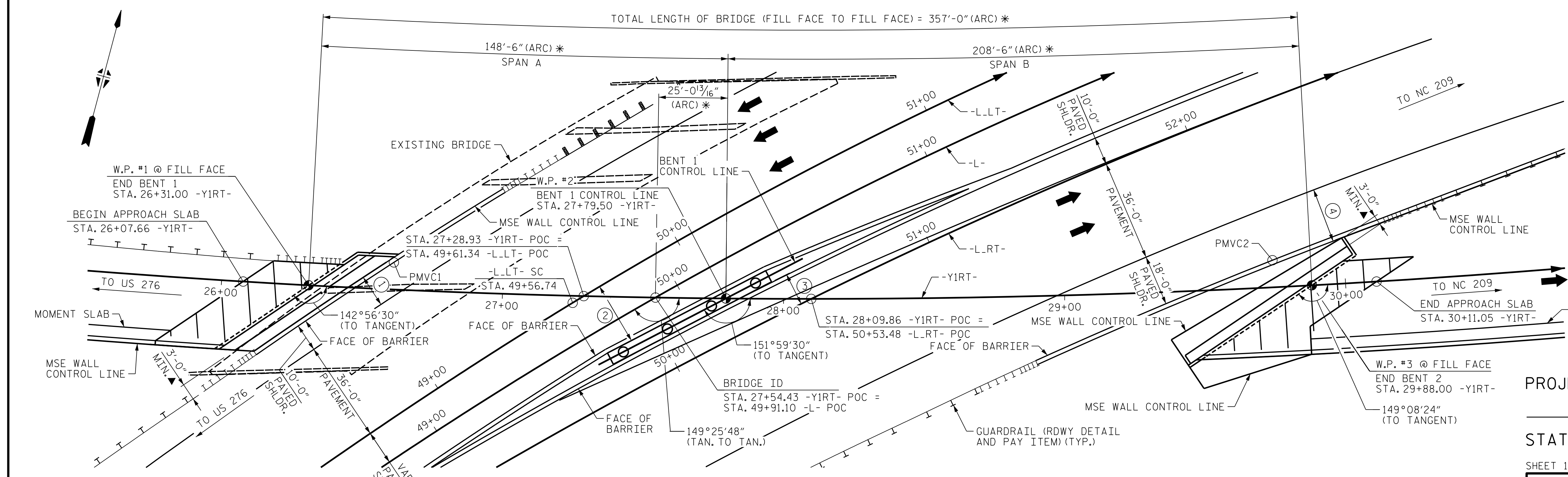


SECTION ALONG -Y1RT-  
(SECTIONS AT END BENTS AND BENT SHOWN AT RIGHT ANGLES TO BENTS)

SEE ROADWAY PLANS FOR MSE WALL ALIGNMENTS



HORIZONTAL CURVE DATA -Y1RT-

PI STA.	23+10.19
Δ	33°39'34" (LT.)
D	01°44'10"
T	998.19'
L	1,938.64'
R	3,300.00'

PLAN  
(PILES NOT SHOWN FOR CLARITY)

HORIZONTAL CLEARANCE DIMENSIONS (RADIAL)

①	11'-0" MIN. HORIZ. CLR. TO FACE OF COPING
②	21'-3" MIN. HORIZ. CLR. TO FACE OF CAP 20'-1" MIN. HORIZ. CLR. TO BARRIER
③	11'-1" MIN. HORIZ. CLR. TO FACE OF CAP 10'-0" MIN. HORIZ. CLR. BARRIER
④	19'-0" MIN. HORIZ. CLR. TO FACE OF COPING

\* = DIMENSION MEASURED ALONG -Y1RT-  
▲ = MSE WALL CONTROL LINE TO FRONT FACE OF END BENT CAP

POINTS OF MINIMUM VERTICAL CLEARANCE (PMVC1 & PMVC2)

LOCATION	ROADWAY ABOVE		ELEV. ON ROADWAY ABOVE	ROADWAY BELOW		ELEV. ON ROADWAY BELOW
	STATION	OFFSET		STATION	OFFSET	
PMVC1	26+60.92 -Y1RT-	9.63' (LT.)	2621.32'	49+11.17 -L-LT-	46.00' (LT.)	2595.19'
PMVC2	29+74.45 -Y1RT-	9.63' (LT.)	2626.20'	52+11.25 -L-RT-	54.00 (RT.)	2600.98'

PROJECT NO. B-3186/B-5898  
HAYWOOD COUNTY  
 STATION: 27+54.43 -Y1RT- POC  
49+91.10 -L- POC  
 SHEET 1 OF 4 REPLACES BRIDGE #430168



W. Brian Watson 1/24/2022

STATE OF NORTH CAROLINA  
 DEPARTMENT OF TRANSPORTATION  
 RALEIGH

**GENERAL DRAWING**  
 BRIDGE ON -Y1RT- (US 19) OVER -L-,  
 -L-LT- AND -L-RT- (US 74/US 23)  
 BETWEEN US 276 AND NC 209

REVISIONS

NO.	BY:	DATE:	NO.	BY:	DATE:
1	--	--	3	--	--
2	--	--	4	--	--

SHEET NO. 502-01  
 TOTAL SHEETS 48



DOCUMENT NOT CONSIDERED FINAL  
 UNLESS ALL SIGNATURES COMPLETED

PLOT DRIVER: NCDOT\_STRUCTURES\_DEFAULT\_PLOTTER.plt  
 USER: PETERSON DATE: 1/24/2022 TIME: 1:24:06 PM  
 FILE: ... \402\_001\_B3186-B5898\_SML\_CD\_001\_430168.dgn