

**NOTES**

THE CONTRACTOR SHALL BE RESPONSIBLE FOR DETERMINING THE TOTAL QUANTITY OF CONDUIT NEEDED TO COMPLETE THE WORK AND THAT THE CONDUIT(S) ARE PLACED AT THE NOTED DIMENSION AND ABOVE THE BOTTOM OF THE GIRDER.

THE INSTALLATION OF THE CONDUIT SYSTEM SHALL BE PAID FOR AS LUMP SUM. THE PRICE SHALL INCLUDE ALL CONDUIT, HANGERS, STABILIZERS, EXPANSION JOINTS, CONCRETE INSERTS, PVC SLEEVES AND ALL NECESSARY HARDWARE TO COMPLETE THE WORK.

THE CONTRACTOR SHALL FIELD VERIFY THAT THE CONDUIT SYSTEM IS NOT IN CONFLICT WITH THE GUARDRAIL POSTS.

SEE DETAIL "C" FOR HANGER ASSEMBLY INSTALLATION.

INSTALL SLEEVES PARALLEL TO GIRDERS. SEE DETAIL "B" FOR SLEEVE INSTALLATION.

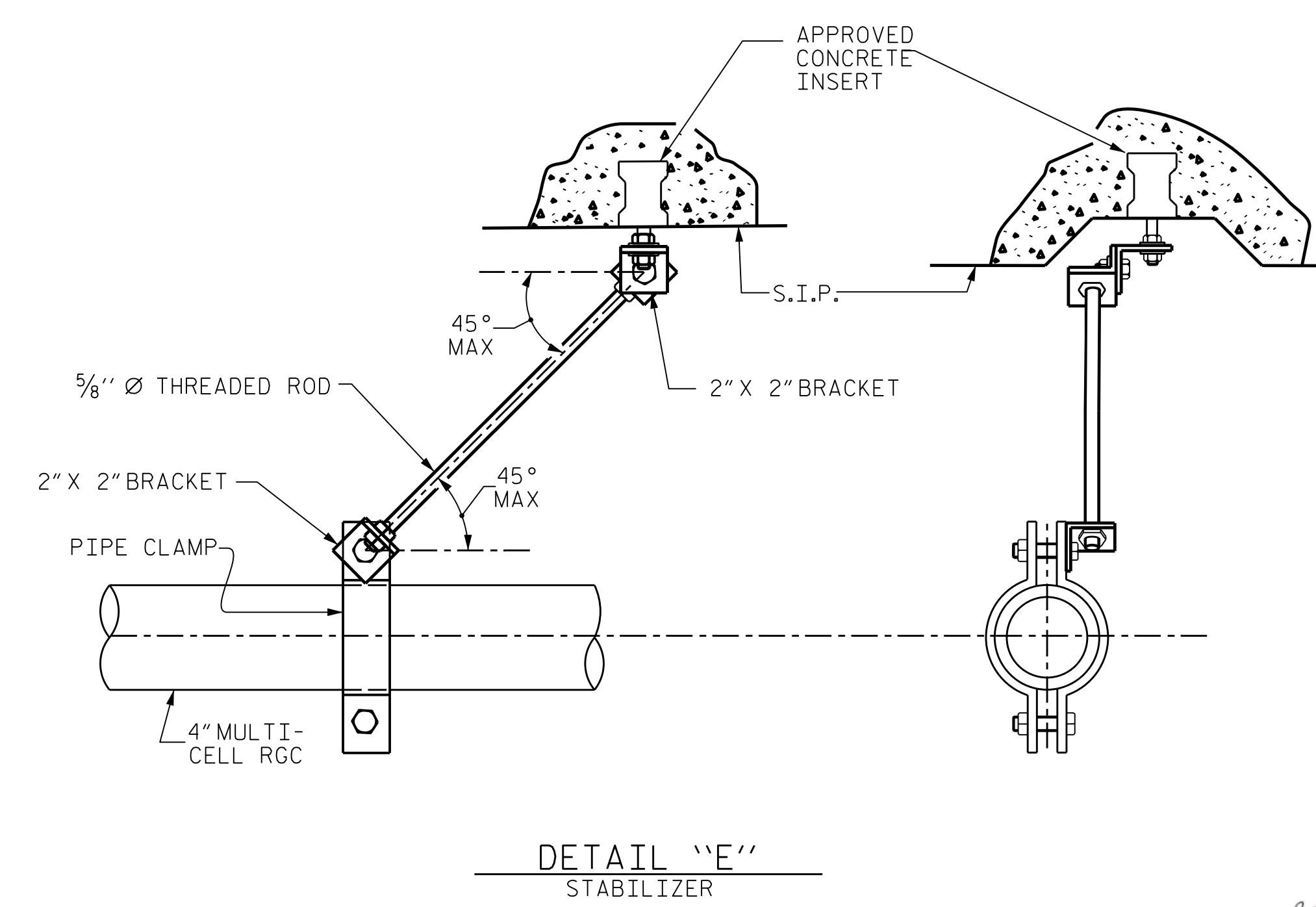
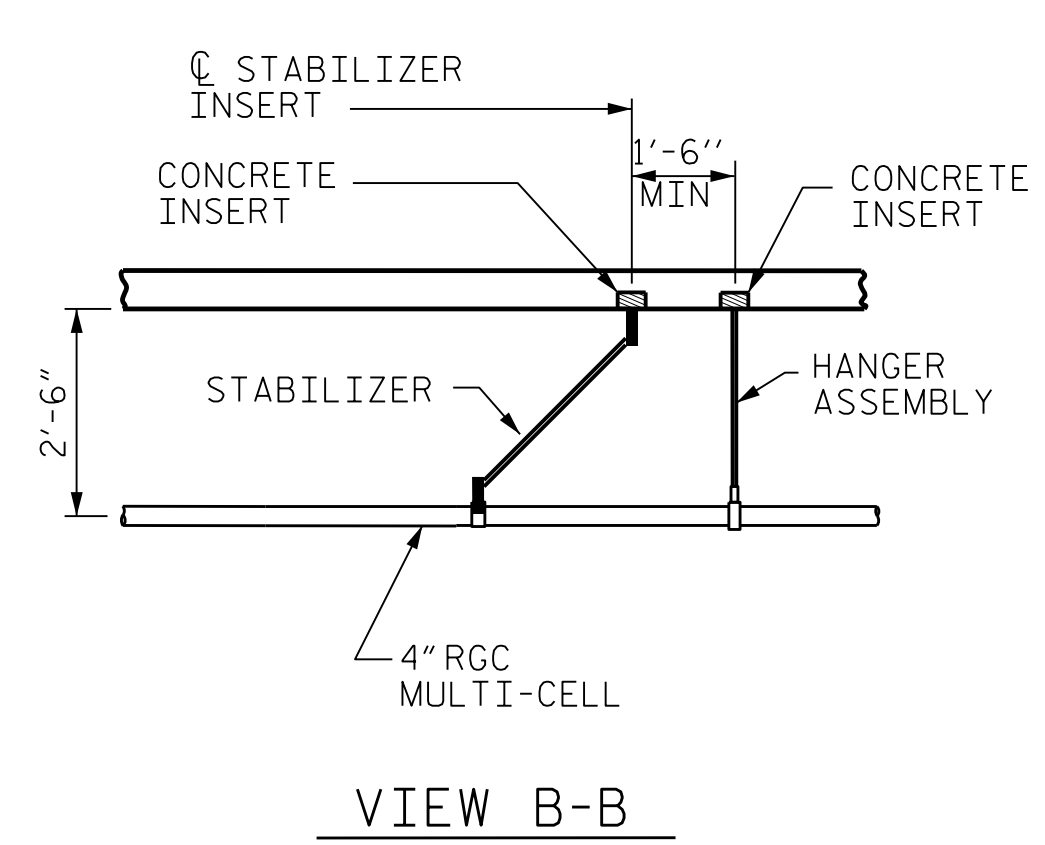
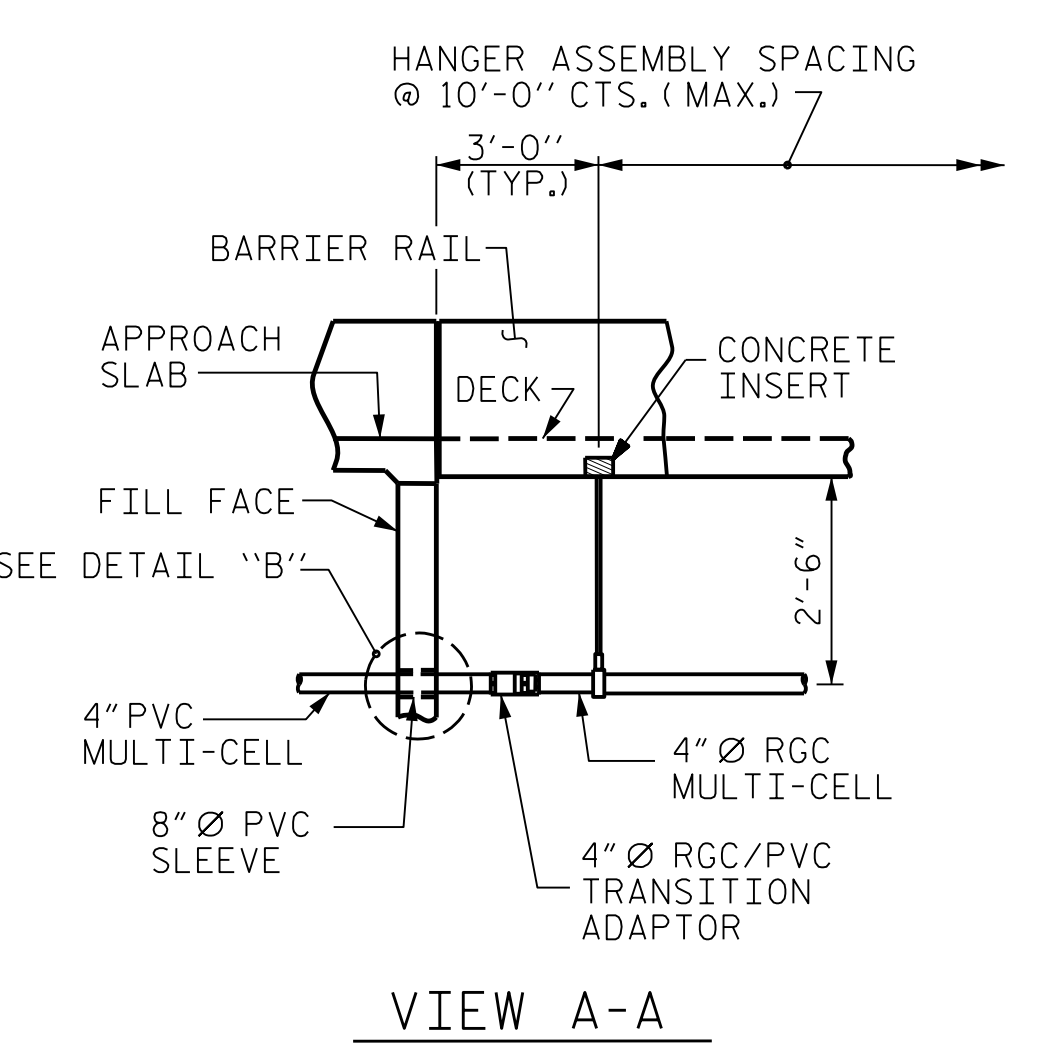
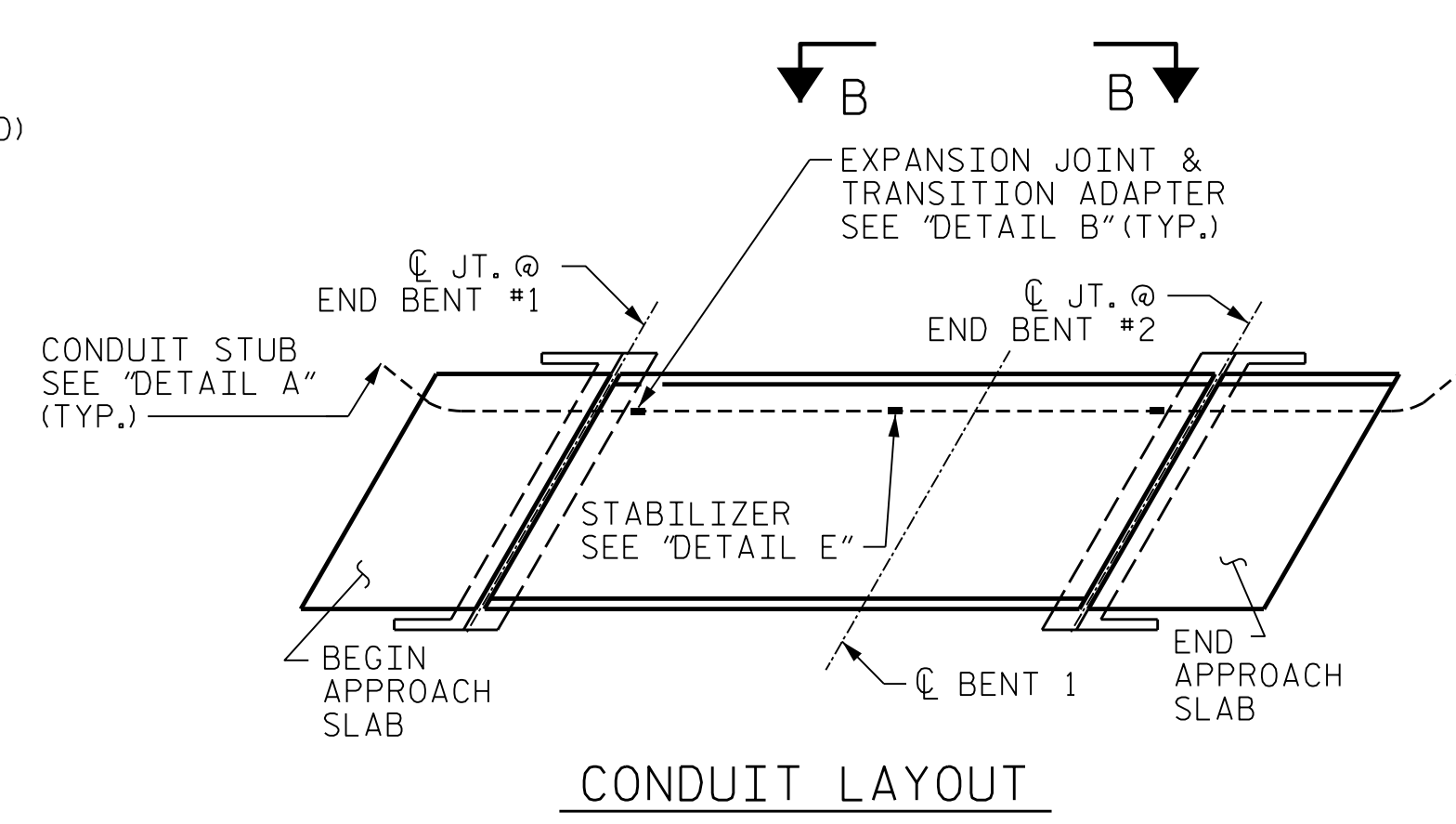
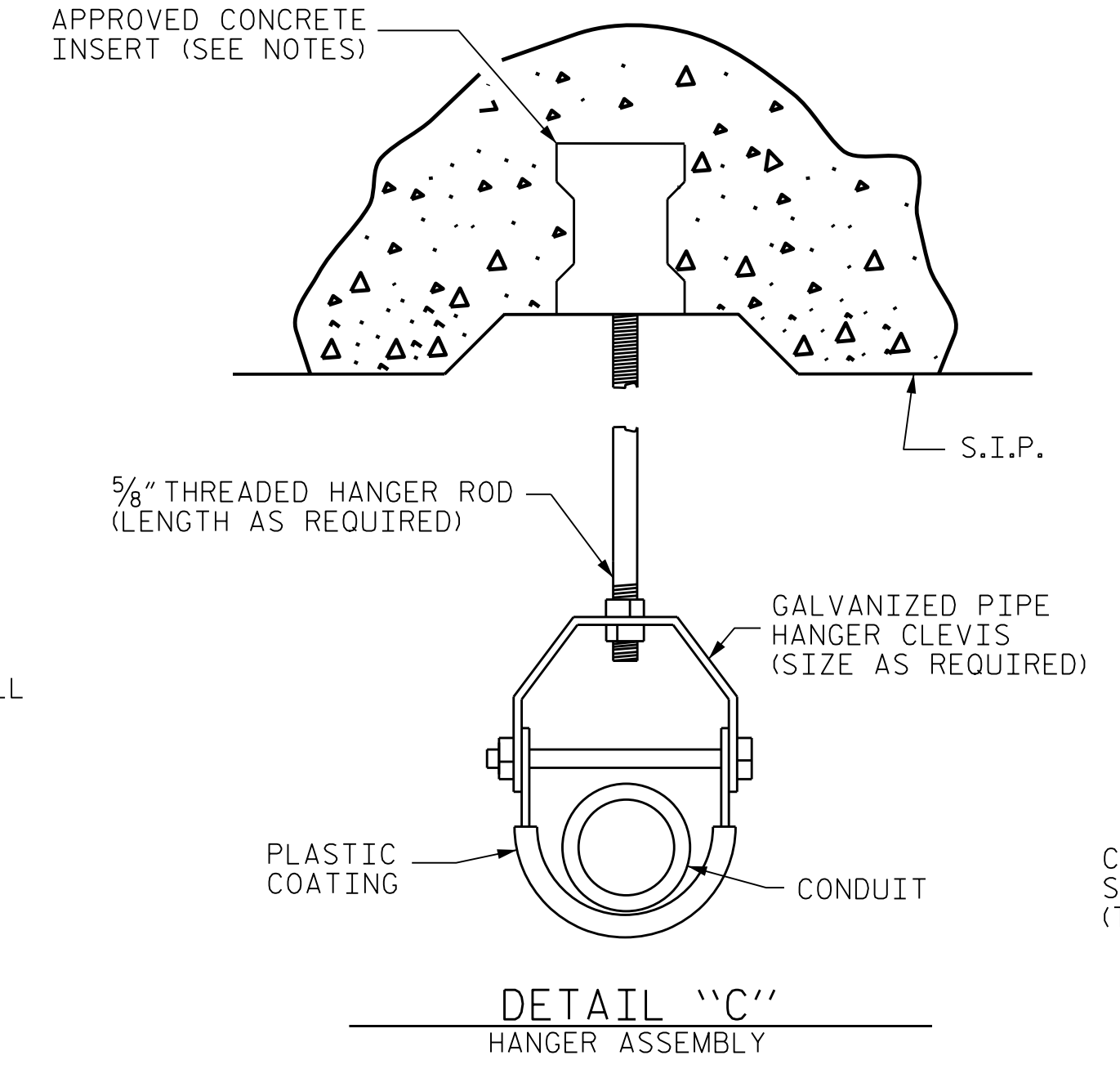
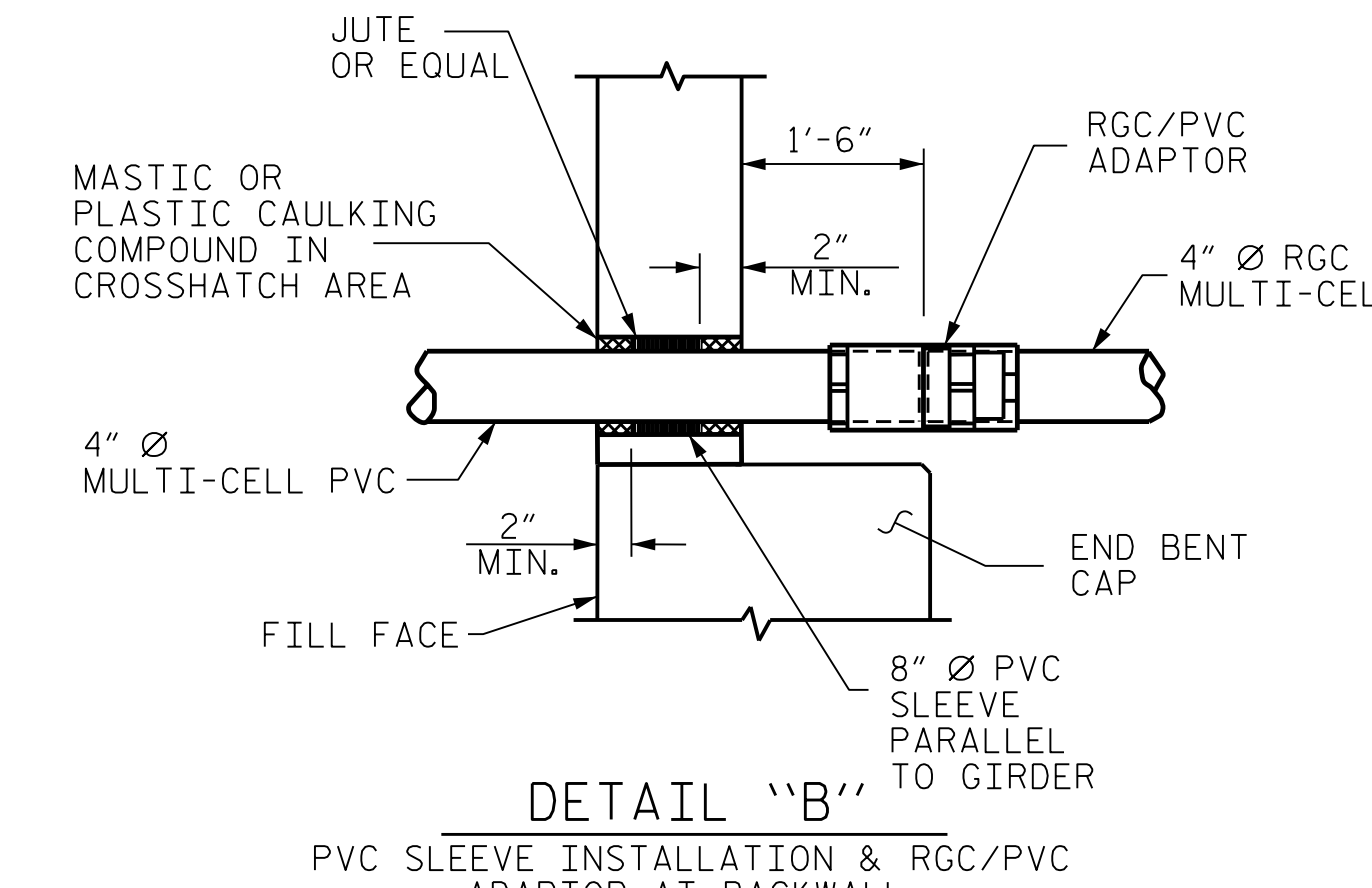
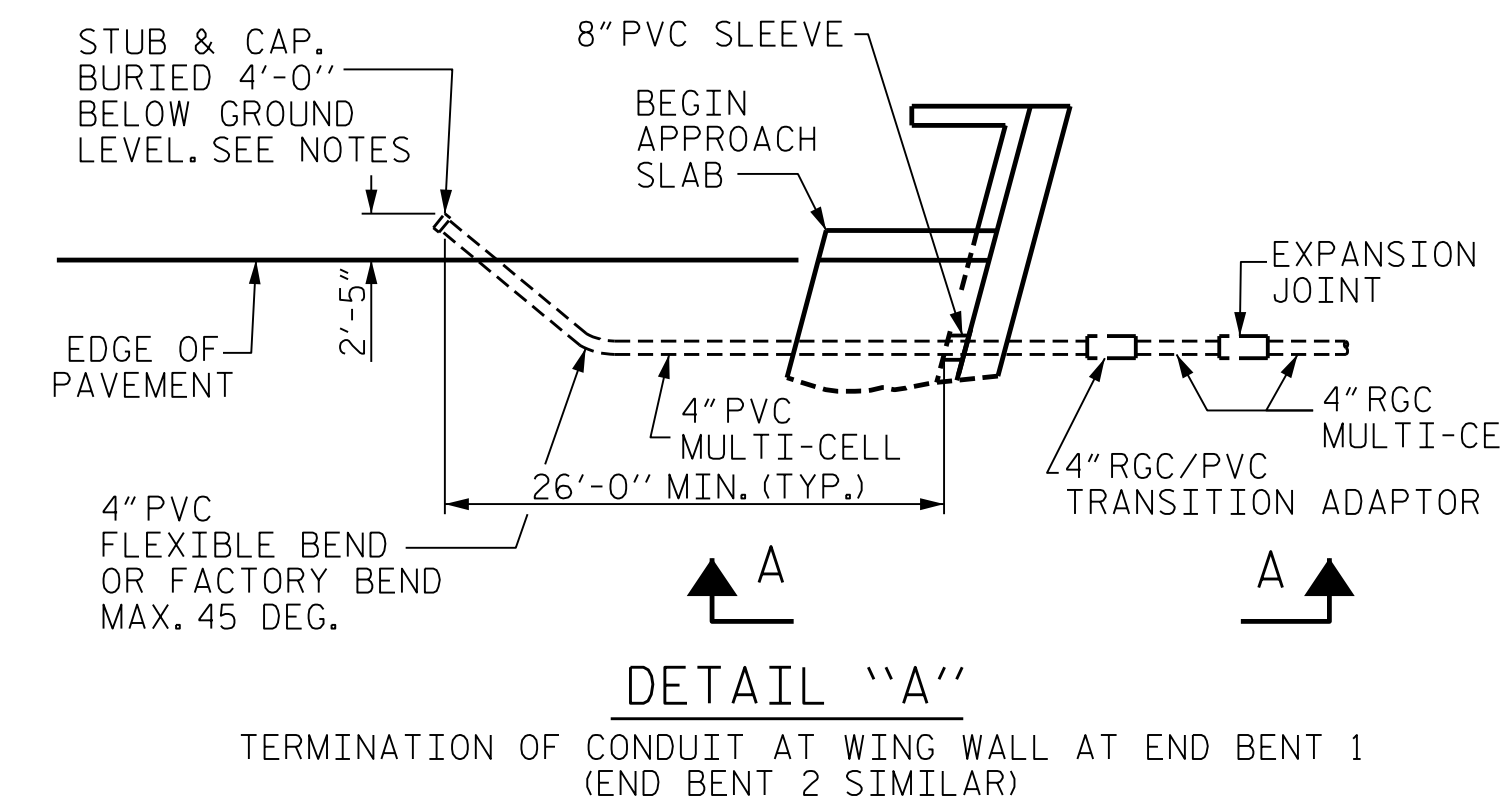
PROVIDE TRANSITION ADAPTOR (AND EXPANSION JOINT) FOR CONDUIT AT END BENT 1 AND END BENT 2.

INSTALL STABILIZER'S MIDWAY BETWEEN DECK EXPANSION JOINTS. STABILIZER CAN NOT BE USED INSTEAD OF A HANGER ASSEMBLY.

THE CONCRETE SCREW INSERT SHALL HAVE A ROD SIZE OF 5/8" AND A PULL FORCE OF 1260 lbs.

FOR ELECTRICAL CONDUIT SYSTEM FOR SIGNALS, SEE SPECIAL PROVISIONS.

**DETAIL "D"**  
4" MULTI-CELL COMPONENTS



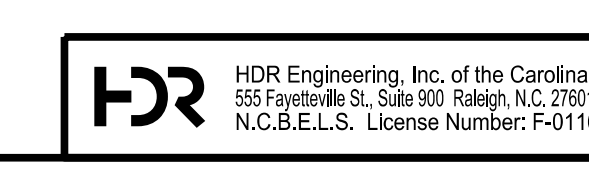
PROJECT NO. B-3186/B-5898  
HAYWOOD COUNTY  
STATION: 42+71.13 -L-

STATE OF NORTH CAROLINA DEPARTMENT OF TRANSPORTATION RALEIGH					
<b>ELECTRICAL CONDUIT SYSTEM FOR SIGNALS</b>					
REVISIONS					
NO.	BY:	DATE:	NO.	BY:	DATE:
1	--	--	3	--	--
2	--	--	4	--	--
					SHEET NO. 59
					TOTAL SHEETS 59



1/25/2022

**ELECTRIC CONDUIT DETAILS**



DOCUMENT NOT CONSIDERED FINAL UNLESS ALL SIGNATURES COMPLETED

PLOT DRIVER: NCDOT STRUCTURES DEFAULT PLOTTER.plt  
 PENTABLE: NCDOT STRUCTURES DEFAULT PEN.tbl  
 USER: PETERSO  
 DATE: 1/25/2022  
 TIME: 8:35:26 AM  
 FILE: ... \401\_290\_B5898B3186\_SMU\_UT\_059\_430168.dgn

DES BY: <u>K. DICKENS</u>	DATE: <u>10/21</u>	DWG BY: <u>D. CARTER</u>	DATE: <u>10/21</u>
DES CHK: <u>H. ABU NIMEH</u>	DATE: <u>10/21</u>	CHK BY: <u>K. DICKENS</u>	DATE: <u>10/21</u>