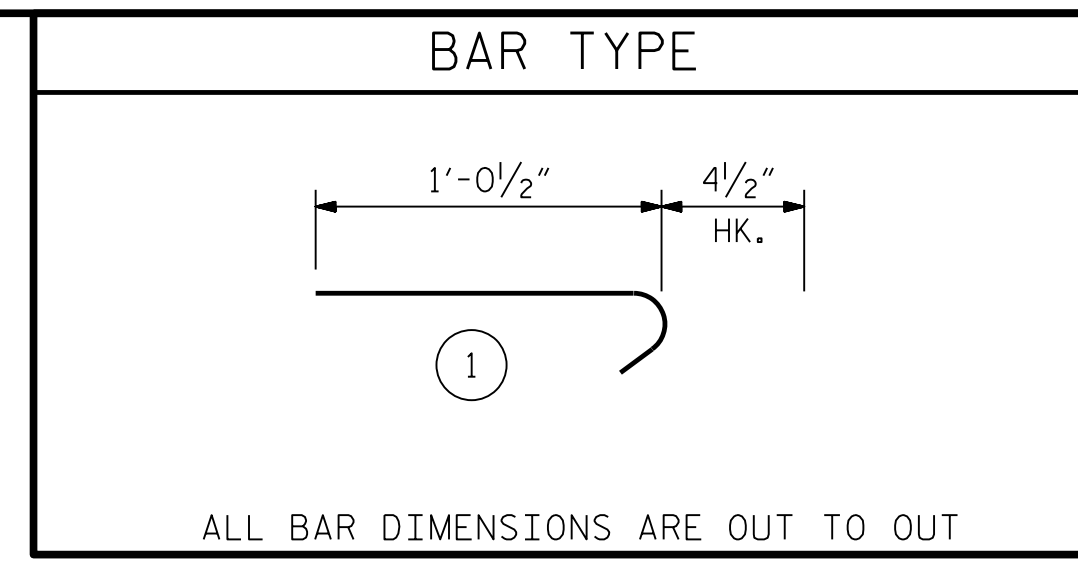


NOTE: IMMEDIATELY AFTER THE CONSTRUCTION OF THE APPROACH SLAB, THE CONTRACTOR SHALL PROVIDE TEMPORARY BERM AND SLOPE DRAIN. CONTRACTOR SHALL GRADE TO PIPE INLET AND PROVIDE EROSION RESISTANT MATERIAL AS SHOWN. THE EROSION RESISTANT MATERIAL SHALL BE EITHER 1) ASPHALT PLANT MIX, TYPE 1 OR TYPE 2, MIN. 2" DEPTH, 2) EROSION CONTROL MAT, OR 3) CONCRETE, AS DIRECTED BY THE ENGINEER. THE SLOPE DRAIN SHALL CONSIST OF A NON-PERFORATED TEMPORARY DRAINAGE PIPE, 12 INCHES IN DIAMETER.

PLAN VIEW
SECTION R-R
TEMPORARY BERM AND SLOPE DRAIN DETAILS



ALL BAR DIMENSIONS ARE OUT TO OUT

** QUANTITIES FOR BARRIER RAIL OR END POST ARE NOT INCLUDED. SEE SHEET 3 OF 4.

THE QUANTITY OF #4 J1 BARS ON THE BILL OF MATERIAL IS BASED ON 1'-0" CENTERS. J1 BARS SHALL BE PLACED AT EACH VERTICAL STUD ANCHOR BOLT. IN THE EVENT THAT THE NUMBER OF VERTICAL STUD ANCHORS EXCEEDS THE NUMBER OF J1 BARS SPECIFIED, ADDITIONAL J1 BARS WILL NOT BE REQUIRED.

NOTES

FOR BRIDGE APPROACH FILL INCLUDING GEOTEXTILE, 6" Ø DRAINAGE PIPE, AND SELECT MATERIAL BACKFILL, SEE ROADWAY PLANS.

GEOTEXTILE SHALL BE TYPE 1 IN ACCORDANCE WITH THE STANDARD SPECIFICATIONS SECTION 1056.

SELECT MATERIAL BACKFILL (CLASS V OR CLASS VI) SHALL BE IN ACCORDANCE WITH STANDARD SPECIFICATIONS SECTION 1016.

SELECT MATERIAL BACKFILL IS TO BE CONTINUOUS ALONG FILL FACE OF BACKWALL FROM OUTSIDE EDGE TO OUTSIDE EDGE OF APPROACH SLAB.

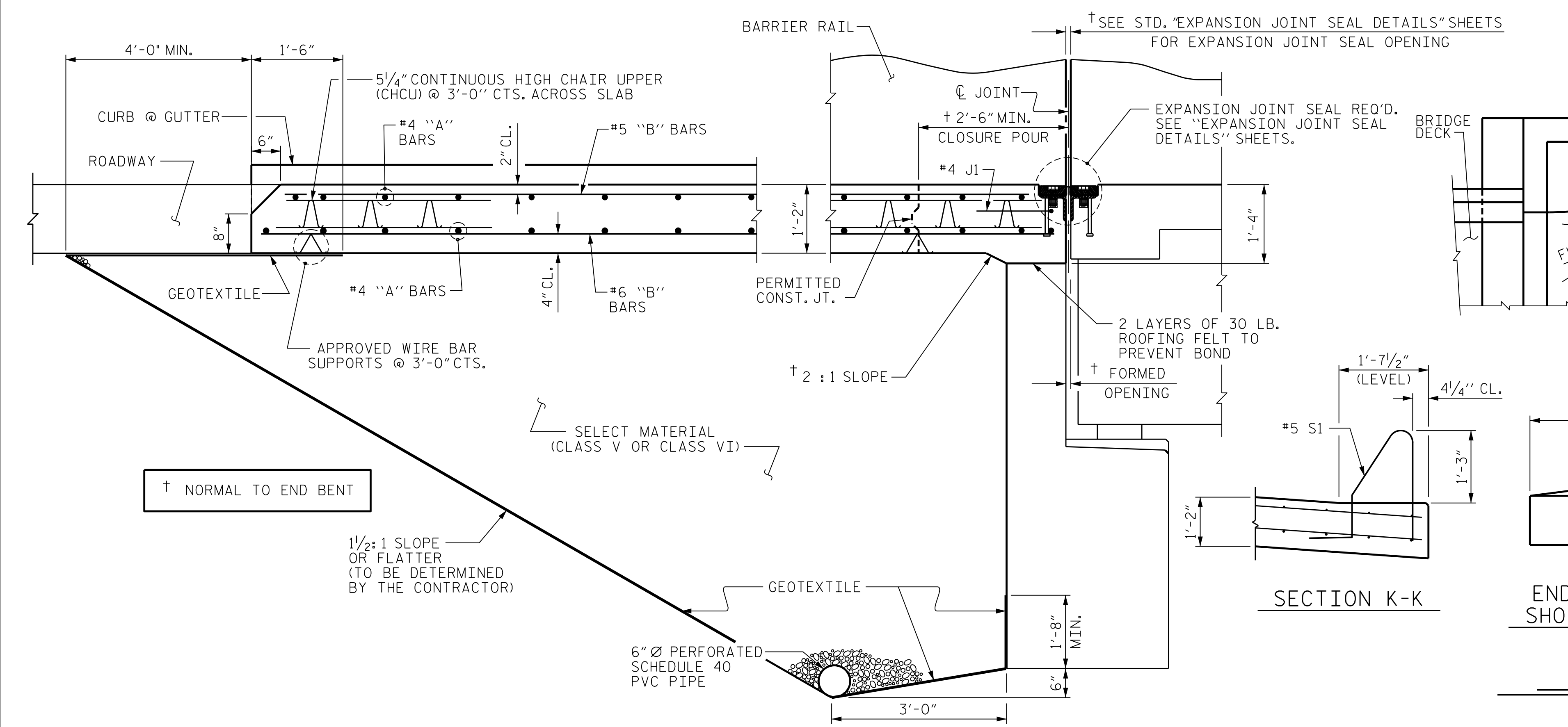
APPROACH SLAB SHALL NOT BE CONSTRUCTED PRIOR TO COMPLETION OF THE BRIDGE DECK.

FOR THE 6" Ø DRAINAGE PIPE OUTLET(S), SEE ROADWAY STANDARD DRAWINGS.

AREA BETWEEN THE WINGWALL AND APPROACH SLAB SHALL BE GRADED TO DRAIN THE WATER AWAY FROM THE FILL FACE OF THE BRIDGE AND SHALL BE PAVED. SEE ROADWAY PLANS.

FOR EXPANSION JOINT SEALS, SEE SPECIAL PROVISIONS.

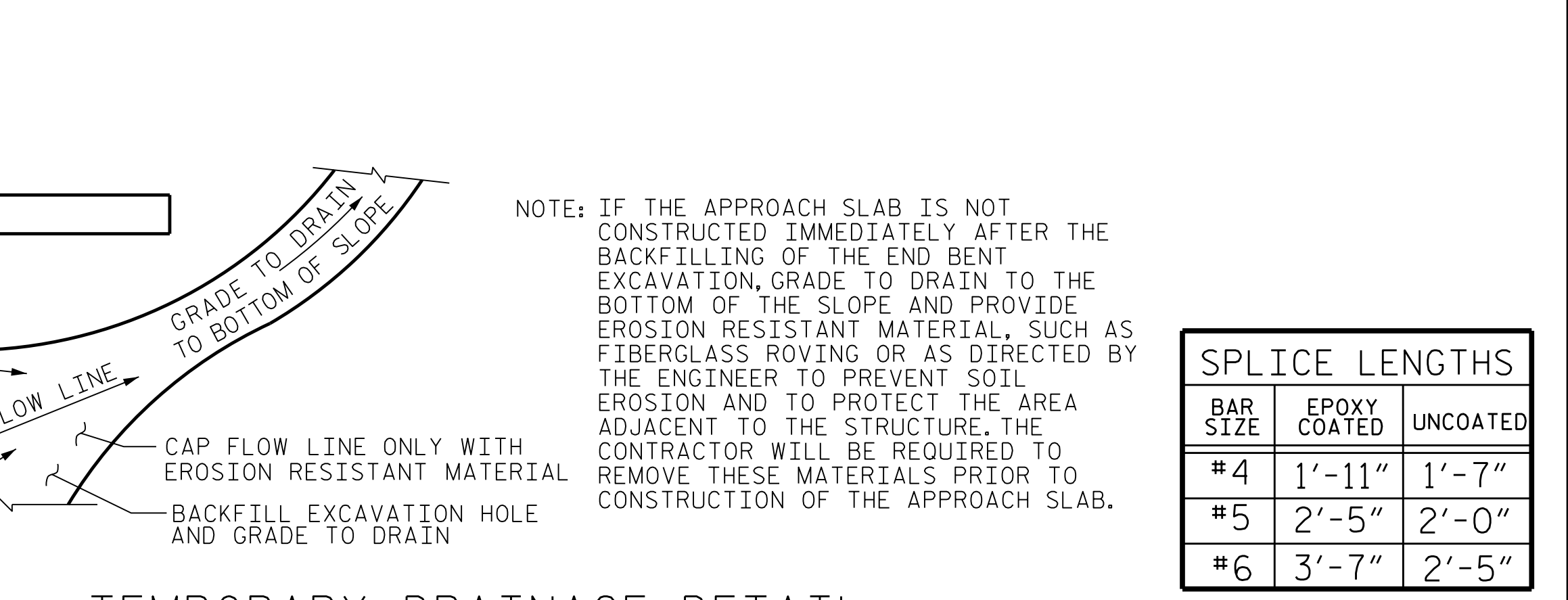
BILL OF MATERIAL											
STAGE 1 APP. SLAB AT END BENT 1						STAGE 1 APP. SLAB AT END BENT 2					
BAR	NO.	SIZE	TYPE	LENGTH	WEIGHT	BAR	NO.	SIZE	TYPE	LENGTH	WEIGHT
* A1	50	#4	STR	37'-2"	1242	* A1	50	#4	STR	37'-2"	1242
A2	52	#4	STR	37'-0"	1286	A2	52	#4	STR	37'-0"	1286
* B1	124	#5	STR	24'-1"	3115	* B1	124	#5	STR	24'-1"	3115
B2	124	#6	STR	24'-7"	4579	B2	124	#6	STR	24'-7"	4579
* B3	4	#5	STR	6'-6"	28	* B3	4	#5	STR	6'-6"	28
B4	4	#6	STR	6'-6"	40	B4	4	#6	STR	6'-6"	40
* D1	25	#4	STR	4'-1"	69	* D1	25	#4	STR	4'-1"	69
D2	26	#4	STR	3'-5"	60	D2	26	#4	STR	3'-5"	60
* J1	71	#4	1	1'-5"	68	* J1	71	#4	1	1'-5"	68
* EPOXY COATED REINF. STEEL						* EPOXY COATED REINF. STEEL					
REINF. STEEL						REINF. STEEL					
LBS. 4,522						LBS. 4,522					
LBS. 5,965						LBS. 5,965					
* DENOTES EPOXY COATED REINF. STEEL						* DENOTES EPOXY COATED REINF. STEEL					
CLASS "AA" CONCRETE						CLASS "AA" CONCRETE					
CU. YDS. 78.4						CU. YDS. 78.4					
STAGE 2 APP. SLAB AT END BENT 1						STAGE 2 APP. SLAB AT END BENT 2					
BAR	NO.	SIZE	TYPE	LENGTH	WEIGHT	BAR	NO.	SIZE	TYPE	LENGTH	WEIGHT
* A3	50	#4	STR	33'-10"	1131	* A3	50	#4	STR	33'-10"	1131
A4	52	#4	STR	33'-8"	1170	A4	52	#4	STR	33'-8"	1170
* B5	113	#5	STR	24'-1"	2839	* B5	113	#5	STR	24'-1"	2839
B6	113	#6	STR	24'-7"	4173	B6	113	#6	STR	24'-7"	4173
* B7	4	#5	STR	6'-6"	28	* B7	4	#5	STR	6'-6"	28
B8	4	#6	STR	6'-6"	40	B8	4	#6	STR	6'-6"	40
* J1	64	#4	1	1'-5"	61	* J1	64	#4	1	1'-5"	61
* EPOXY COATED REINF. STEEL						* EPOXY COATED REINF. STEEL					
REINF. STEEL						REINF. STEEL					
LBS. 4,059						LBS. 4,059					
LBS. 5,383						LBS. 5,383					
* DENOTES EPOXY COATED REINF. STEEL						* DENOTES EPOXY COATED REINF. STEEL					
CLASS "AA" CONCRETE						CLASS "AA" CONCRETE					
CU. YDS. 71.2						CU. YDS. 71.2					



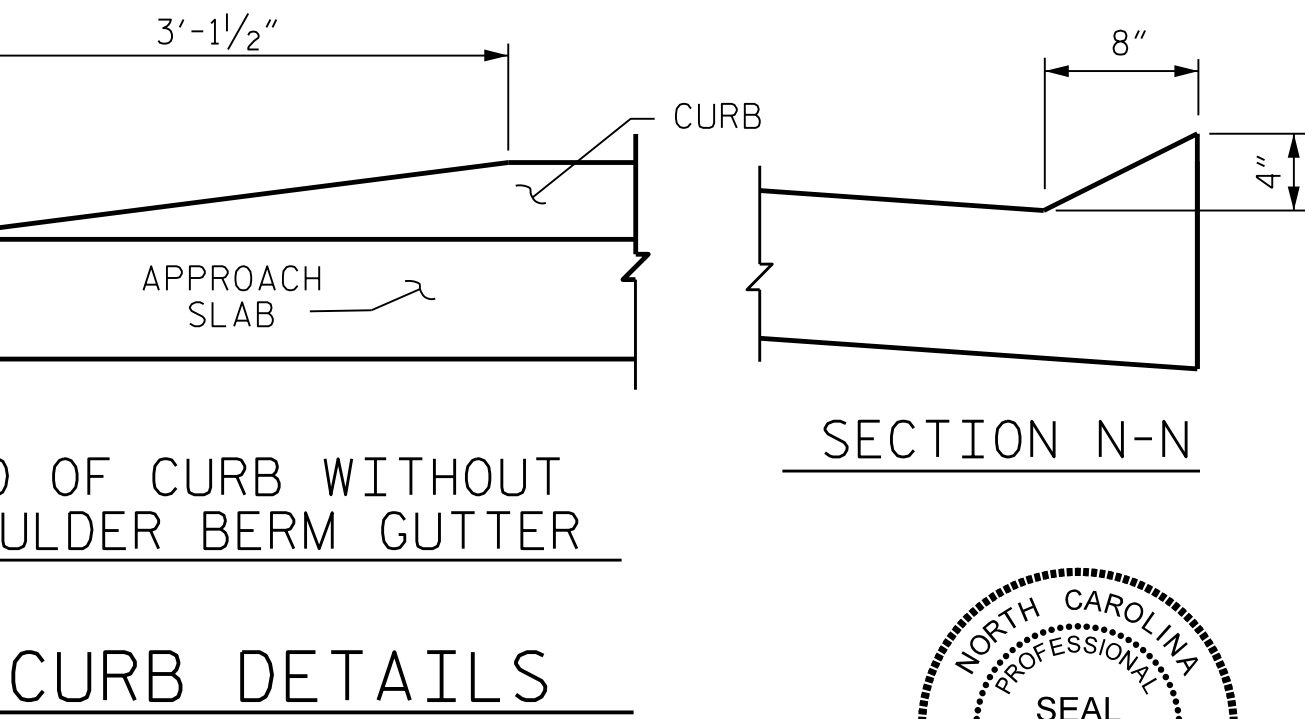
DES BY: H. ABU NIMEH DATE: 05/21
 DES CHK: L. GUALTIERI DATE: 07/21

DWG BY: B. PETERSON DATE: 02/21
 CHK BY: L. GUALTIERI DATE: 07/21

SECTION THRU SLAB
(TYPE I - STANDARD APPROACH FILL)



TEMPORARY DRAINAGE DETAIL



CURB DETAILS

SPlice LENGTHS		
BAR SIZE	EPOXY COATED	UNCOATED
#4	1'-11"	1'-7"
#5	2'-5"	2'-0"
#6	3'-7"	2'-5"

PROJECT NO. B-3186/B-5898
 HAYWOOD COUNTY
 STATION: 42+71.13 -L-
 SHEET 4 OF 4

STATE OF NORTH CAROLINA
 DEPARTMENT OF TRANSPORTATION
 RALEIGH

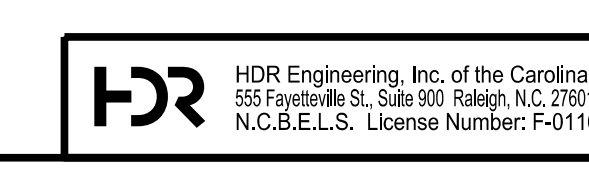
BRIDGE APPROACH
 SLAB DETAILS

REVISIONS					
NO.	BY:	DATE:	NO.	BY:	DATE:
1	--	--	3	--	--
2	--	--	4	--	--

SHEET NO. 501-58
 TOTAL SHEETS 59



1/25/2022



DOCUMENT NOT CONSIDERED FINAL
 UNLESS ALL SIGNATURES COMPLETED

PLOT DRIVER: NCDOT STRUCTURES DEFAULT PLOTTER.plt
 USER: PETERSON DATE: 1/25/2022
 FILE: ... \401_285_B5898B3186_5MU_AS_058_430168.dgn
 PENTABLE: NCDOT STRUCTURES DEFAULT PEN.tbl
 TIME: 8:35:19 AM