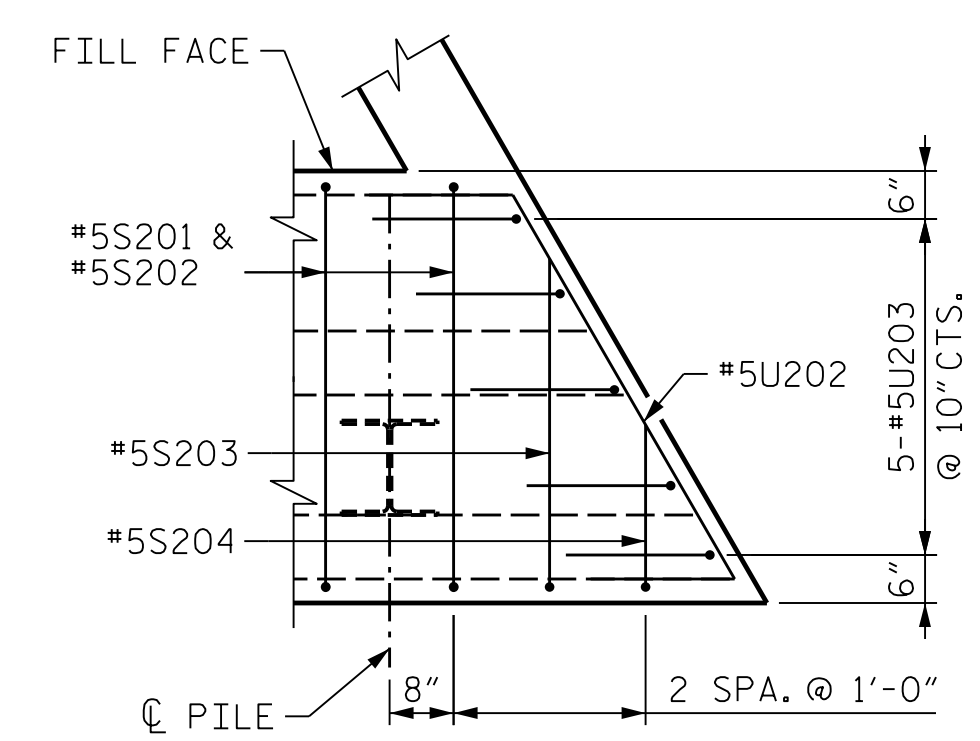
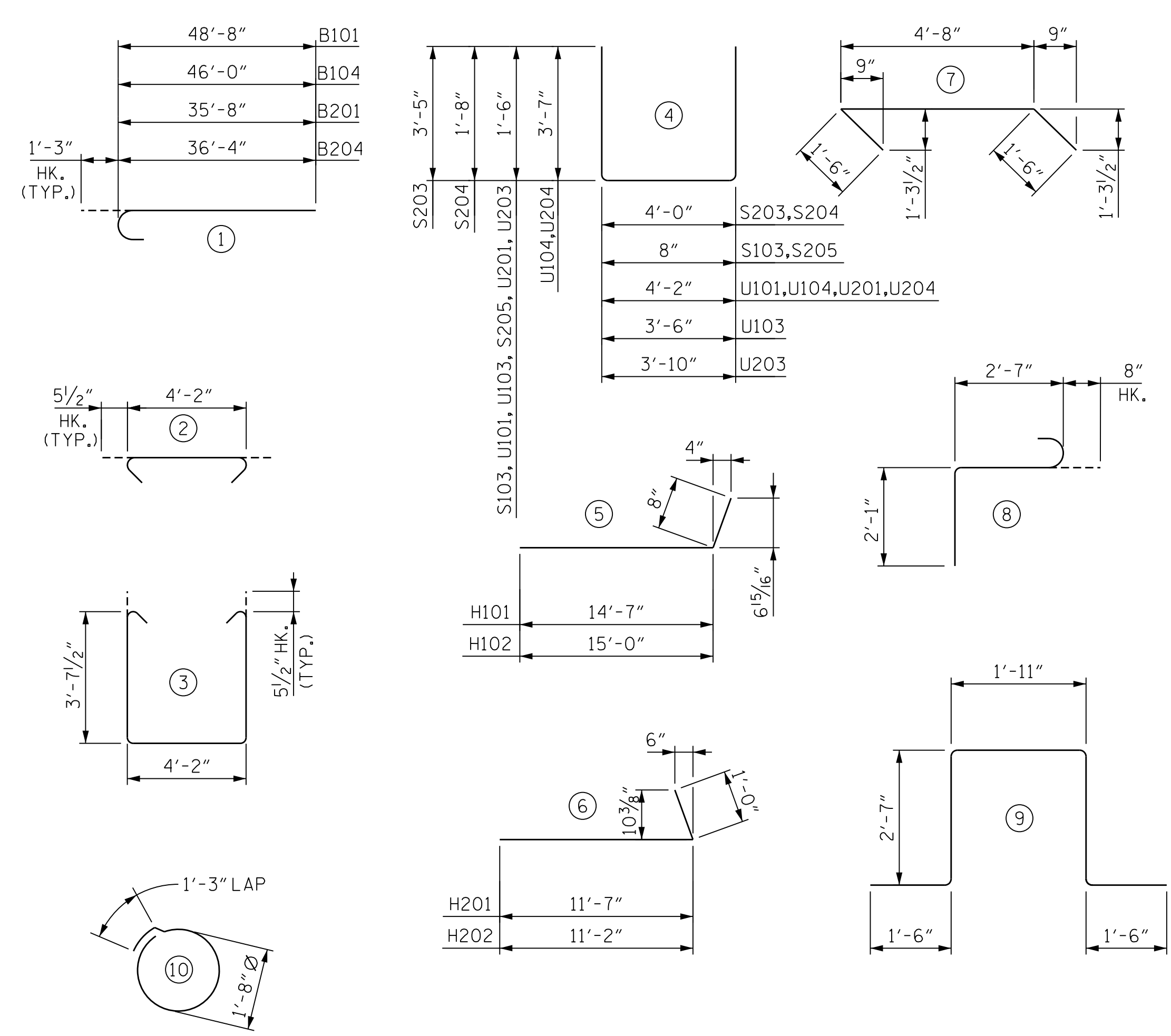


DETAIL "X"
("K" BARS NOT SHOWN FOR CLARITY)



DETAIL "Y"
("K" BARS NOT SHOWN FOR CLARITY)

BAR TYPES

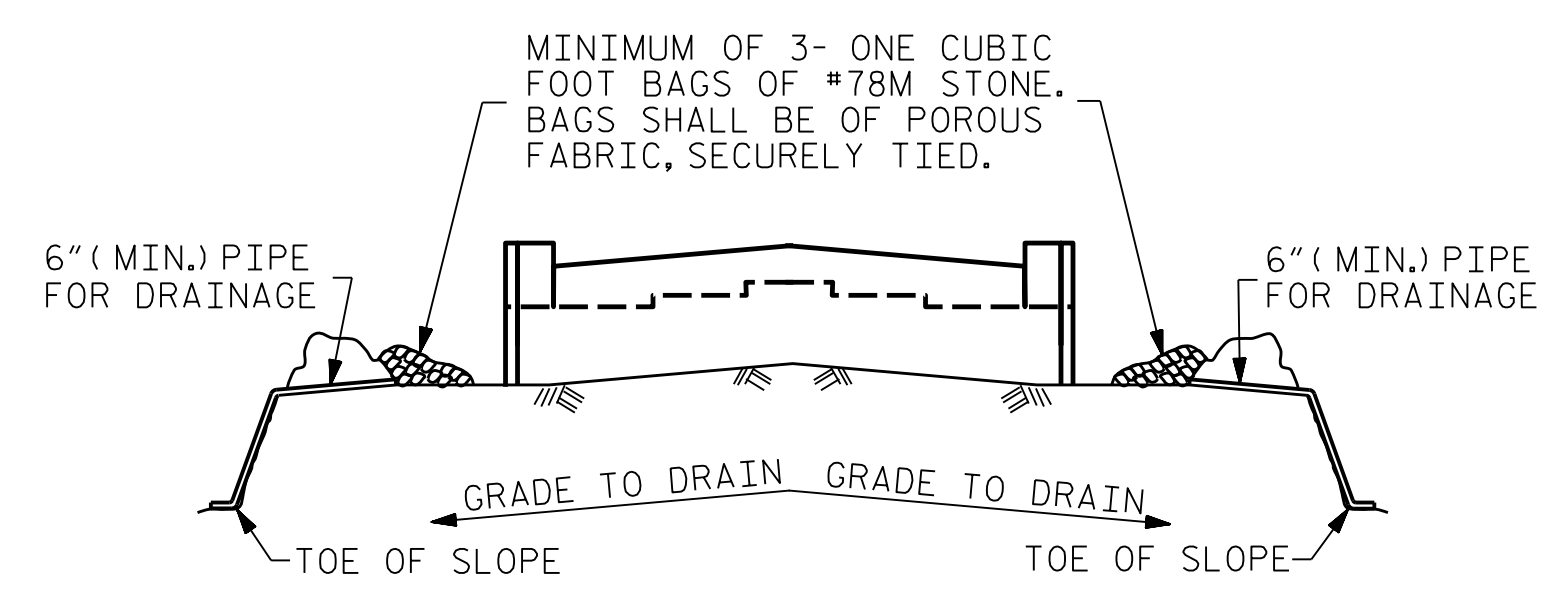


ALL BAR DIMENSIONS ARE OUT TO OUT

BILL OF MATERIAL - END BENT 2

STAGE 1						STAGE 2					
BAR	QTY	SIZE	TYPE	LENGTH	WEIGHT	BAR	QTY	SIZE	TYPE	LENGTH	WEIGHT
B101	6	#9	1	45'-11"	937	B201	6	#9	1	36'-11"	754
B102	6	#9	STR	44'-8"	912	B202	6	#9	STR	35'-8"	728
B103	24	#5	STR	43'-7"	1091	B203	24	#5	STR	35'-2"	881
B104	6	#9	1	47'-3"	964	B204	6	#9	1	37'-7"	767
B105	6	#9	STR	46'-0"	939	B205	6	#9	STR	36'-4"	742
B106	20	#4	STR	4'-2"	57	B206	17	#4	STR	4'-2"	48
B107	12	#4	STR	29'-6"	237	B207	8	#4	STR	34'-10"	187
B108	30	#4	STR	3'-2"	64	B208	30	#4	STR	3'-2"	64
B109	6	#5	STR	43'-1"	270	B209	6	#5	STR	26'-11"	169
						B210	6	#5	STR	40'-2"	252
H101	14	#4	5	15'-3"	143	H201	25	#6	6	12'-7"	473
H102	14	#4	5	15'-8"	147	H202	25	#6	6	12'-2"	457
K101	42	#4	STR	29'-6"	828	K201	28	#4	STR	34'-10"	652
K102	4	#4	STR	3'-0"	9	K202	4	#4	STR	3'-0"	9
K103	8	#4	STR	2'-0"	11						
S101	101	#5	2	5'-1"	536	S201	83	#5	2	5'-1"	441
S102	101	#5	3	12'-4"	1300	S202	83	#5	3	12'-4"	1068
S103	78	#4	4	3'-8"	192	S203	1	#5	4	10'-10"	12
S104	68	#4	10	6'-6"	296	S204	1	#5	4	7'-4"	8
S105	3	#6	9	10'-1"	46	S205	62	#4	4	3'-8"	152
S106	3	#6	8	5'-4"	25	S206	56	#4	10	6'-6"	244
U101	60	#4	4	7'-2"	288	U201	72	#4	4	7'-2"	345
U102	4	#5	7	7'-8"	32	U202	5	#5	7	7'-8"	40
U103	5	#5	4	6'-6"	34	U203	5	#5	4	6'-10"	36
U104	17	#5	4	11'-4"	201	U204	14	#5	4	11'-4"	166
V101	156	#5	STR	9'-9"	1587	V201	124	#5	STR	10'-2"	1315
V102	38	#5	STR	11'-5"	453	V202	32	#5	STR	11'-10"	395

REINFORCING STEEL			LBS.	11,599	REINFORCING STEEL			LBS.	10,405
CLASS A CONCRETE					CLASS A CONCRETE				
POUR #1 (COLLARS, CAP, LOWER PART OF WINGS)			CU. YDS.	65.6	POUR #1 (COLLARS, CAP, LOWER PART OF WINGS)			CU. YDS.	55.3
POUR #2 (BACKWALL & UPPER PART OF WINGS)			CU. YDS.	24.8	POUR #2 (BACKWALL & UPPER PART OF WINGS)			CU. YDS.	19.4
TOTAL			CU. YDS.	90.4	TOTAL			CU. YDS.	74.7
HP12X53 STEEL PILES NO.19			LIN. FT.	665	HP12X53 STEEL PILES NO.13			LIN. FT.	455
PILE DRIVING EQUIPMENT SETUP FOR HP12X53 STEEL PILES			EA.	19	PILE DRIVING EQUIPMENT SETUP FOR HP12X53 STEEL PILES			EA.	13
STEEL PILE POINTS			EA.	19	STEEL PILE POINTS			EA.	13

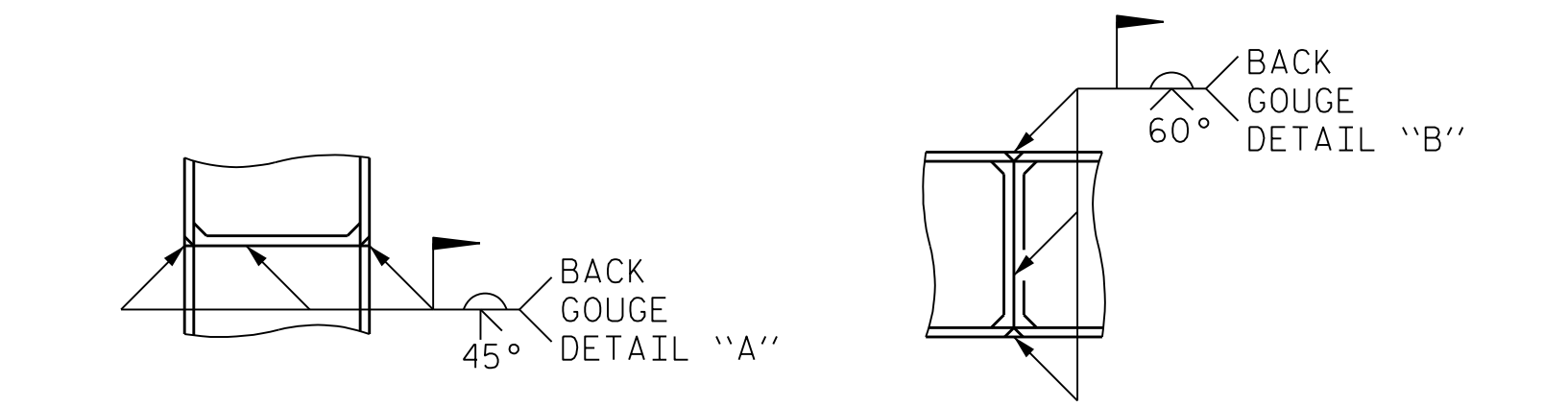


BAGGED STONE AND PIPE SHALL BE PLACED IMMEDIATELY AFTER COMPLETION OF END BENT EXCAVATION. PIPE MAY BE EITHER CONCRETE, CORRUGATED STEEL, CORRUGATED ALUMINUM ALLOY, OR CORRUGATED PLASTIC. PERFORATED PIPE WILL NOT BE ALLOWED.

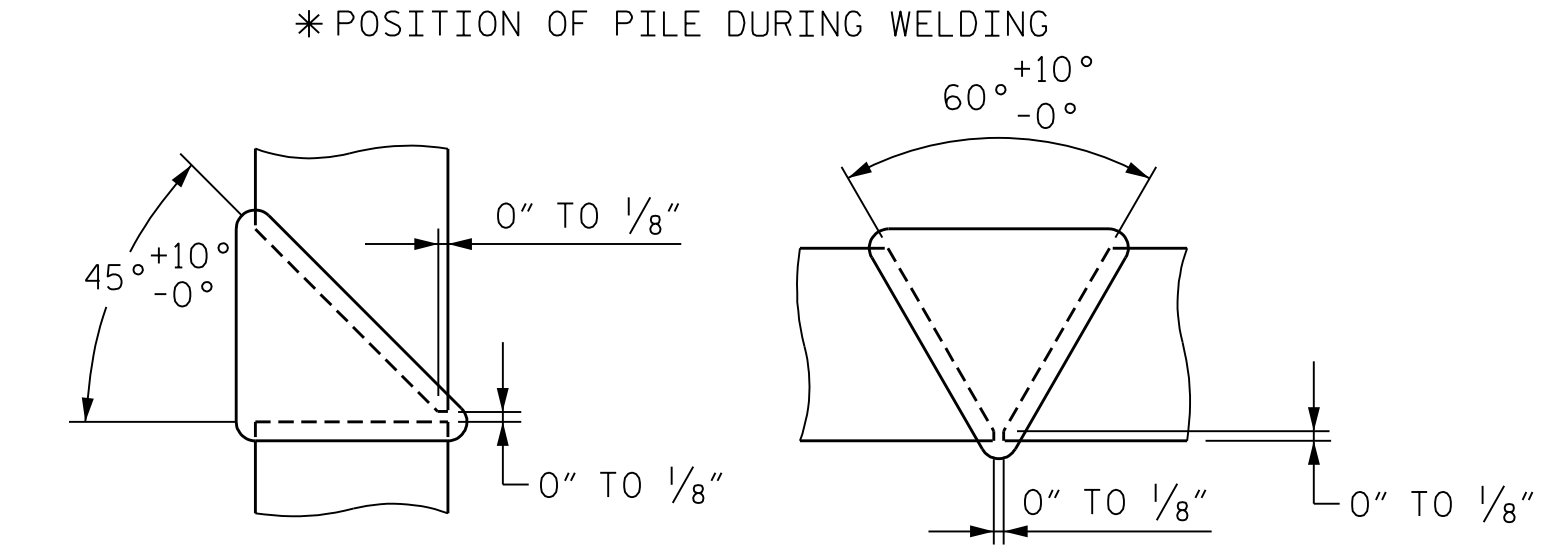
BAGGED STONE SHALL REMAIN IN PLACE UNTIL THE ENGINEER DIRECTS THAT IT BE REMOVED. THE CONTRACTOR SHALL REMOVE AND DISPOSE OF SILT ACCUMULATIONS AT BAGGED STONE WHEN SO DIRECTED BY THE ENGINEER. BAGS SHALL BE REMOVED AND REPLACED WHENEVER THE ENGINEER DETERMINES THAT THEY HAVE DETERIORATED AND LOST THEIR EFFECTIVENESS.

NO SEPARATE PAYMENT WILL BE MADE FOR THIS WORK AND THE ENTIRE COST OF THIS WORK SHALL BE INCLUDED IN THE UNIT CONTRACT PRICE BID FOR THE SEVERAL PAY ITEMS.

TEMPORARY DRAINAGE AT END BENT



*** PILE HORIZONTAL OR VERTICAL**



DETAIL "A" **DETAIL "B"**

PILE SPlice DETAILS

PROJECT NO. B-3186/B-5898

HAYWOOD COUNTY

STATION: 42+71.13 -L-

SHEET 6 OF 6

STATE OF NORTH CAROLINA
DEPARTMENT OF TRANSPORTATION
RALEIGH

**SUBSTRUCTURE
END BENT 2
BILL OF MATERIALS**

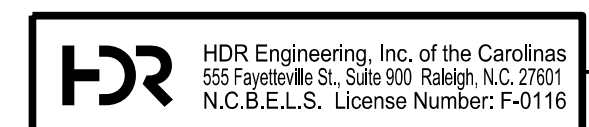


1/25/2022

REVISIONS

NO.	BY:	DATE:	NO.	BY:	DATE:
1	--	--	3	--	--
2	--	--	4	--	--

SHEET NO. S01-53
TOTAL SHEETS 59



DOCUMENT NOT CONSIDERED FINAL UNLESS ALL SIGNATURES COMPLETED

PLOT DRIVER: NCDOT STRUCTURES DEFAULT PLOTTER.plt PENTABLE: NCDOT STRUCTURES DEFAULT PEN.tbl
 USER: PPETERSO DATE: 1/25/2022 TIME: 8:34:30 AM
 FILE: ... \401_260_B5898B3186_SMU_E2_053_430168.dgn

DES BY: <u>K. DICKENS</u>	DATE: <u>06/21</u>	DWG BY: <u>B. PETERSON</u>	DATE: <u>06/21</u>
DES CHK: <u>L. GUALTIERI</u>	DATE: <u>06/21</u>	CHK BY: <u>K. DICKENS</u>	DATE: <u>07/21</u>