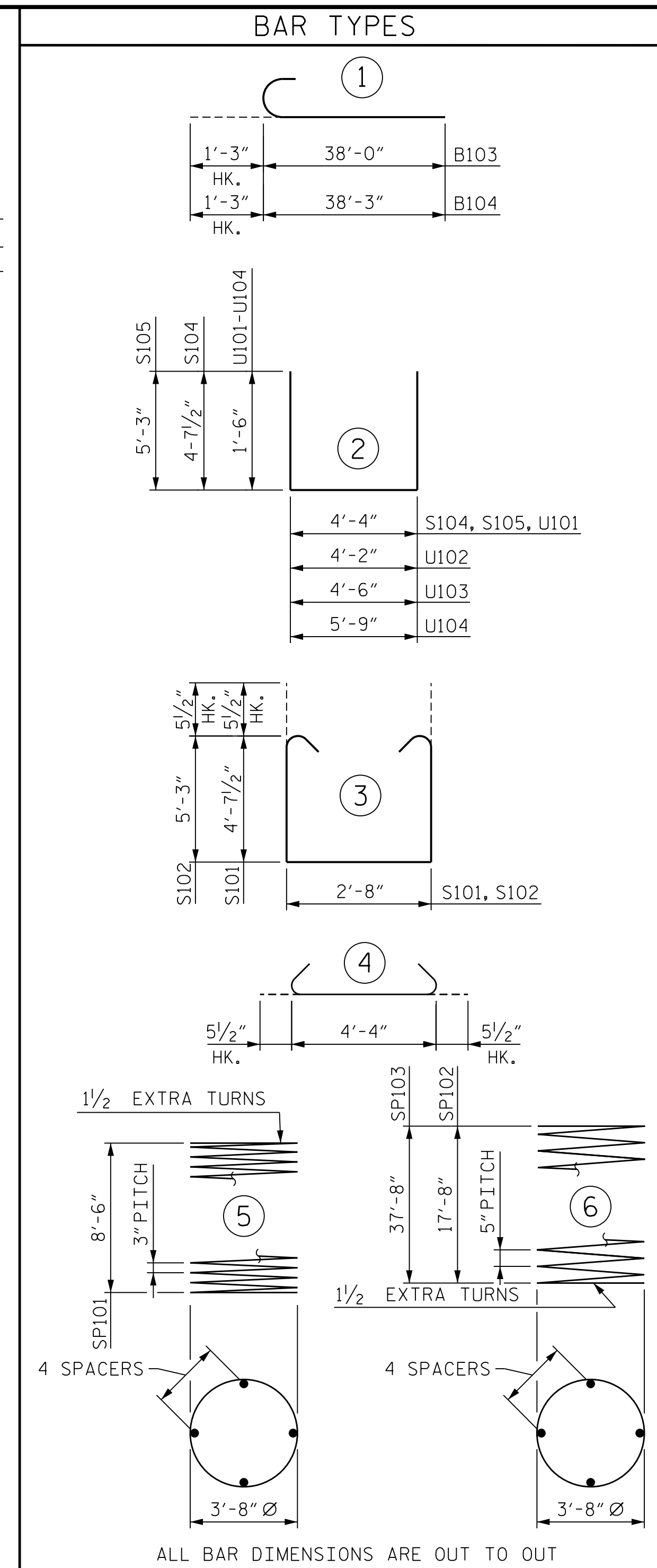
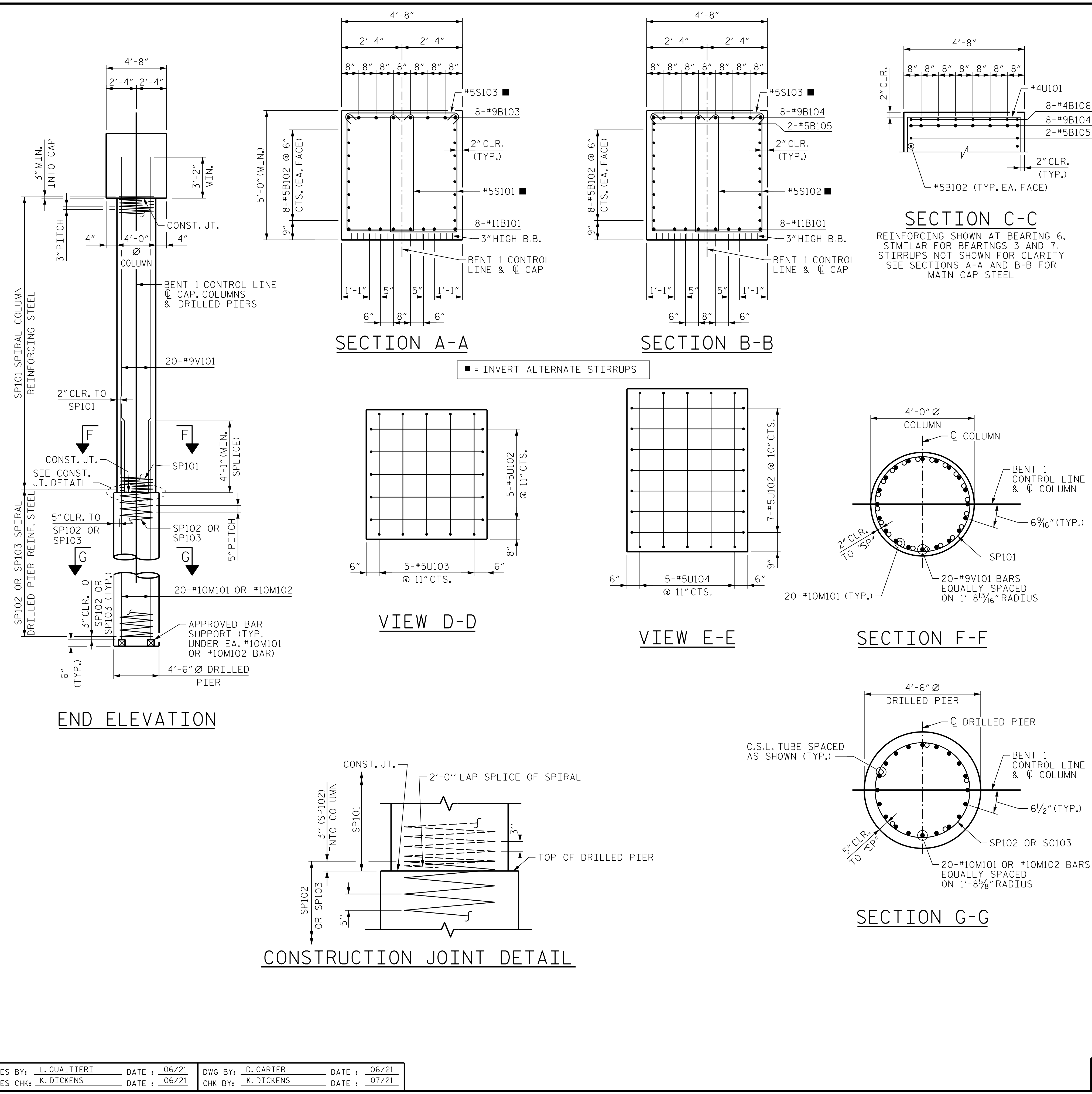


PLOT DRIVER: NCDOT STRUCTURES DEFAULT PLOTTER.plt
 PENTABLE: NCDOT STRUCTURES DEFAULT PEN.tbl
 USER: PPRETOSO DATE: 1/25/2022 TIME: 8:33:27 AM
 FILE: ... \401.225.B589883186.5MU.B1.046_430168.dgn



BILL OF MATERIAL					
BENT 1 - STAGE 1					
BAR NO.	SIZE	TYPE	LENGTH	WEIGHT	
B101	16	#11	STR	38'-3"	3252
B102	32	#5	STR	37'-2"	1241
B103	8	#9	1	39'-3"	1068
B104	8	#9	1	39'-6"	1075
B105	2	#5	STR	36'-6"	77
B106	16	#4	STR	10'-10"	116
B107	8	#4	STR	5'-4"	29
M101	40	#10	STR	24'-9"	4260
M102	40	#10	STR	44'-9"	7703
S101	68	#5	3	12'-10"	884
S102	78	#5	3	14'-1"	1146
S103	72	#5	4	5'-3"	395
S104	8	#5	2	13'-7"	114
S105	8	#5	2	14'-10"	124
U101	55	#4	2	7'-4"	270
U102	12	#5	2	7'-2"	90
U103	5	#5	2	7'-6"	40
U104	5	#5	2	8'-9"	46
V101	80	#9	STR	11'-9"	3196
REINFORCING STEEL					LBS. 23,528
BAR NO.	SIZE	TYPE	LENGTH	WEIGHT	
SPI01	4	*	5	410'-1"	1096
SPI02	2	**	6	500'-0"	1043
SPI03	2	**	6	1045'-5"	1281
SPIRAL REINF. STEEL					LBS. 4,320
CLASS A CONCRETE					
POUR 2 (COLUMNS)				CU. YDS.	15.4
POUR 3 (CAP)				CU. YDS.	68.8
TOTAL CLASS A CONCRETE					CU. YDS. 84.2
DRILLED PIER CONCRETE					
POUR 1 (DRILLED PIERS)				CU. YDS.	65.5
CSL TUBES					LIN. FT. 590.0
DRILLED PIERS IN SOIL					LIN. FT. 76
DRILLED PIERS NOT IN SOIL					LIN. FT. 36
PERMANENT STEEL CASING					LIN. FT. 56

PROJECT NO. B-3186/B-5898
 HAYWOOD COUNTY
 STATION: 42+71.13 -L-
 SHEET 3 OF 4

* THE SPI01 SPIRAL REINFORCING STEEL SHALL BE W20 OR D-20 COLD DRAWN WIRE OR #4 PLAIN OR DEFORMED BAR.
 ** THE SPI02 & SPI03 SPIRAL REINFORCING STEEL SHALL BE W31 OR D-31 COLD DRAWN WIRE OR #5 PLAIN OR DEFORMED BAR.

1/25/2022

DR HDR Engineering, Inc. of the Carolinas
 555 Fayetteville St., Suite 900 Raleigh, N.C. 27601
 N.C.B.E.L.S. License Number: F-0116

DOCUMENT NOT CONSIDERED FINAL UNLESS ALL SIGNATURES COMPLETED

STATE OF NORTH CAROLINA
 DEPARTMENT OF TRANSPORTATION
 RALEIGH

SUBSTRUCTURE BENT 1 SECTIONS AND DETAILS AND BILL OF MATERIALS STAGE 1

REVISIONS

NO.	BY:	DATE:	NO.	BY:	DATE:
1	--	--	3	--	--
2	--	--	4	--	--

SHEET NO. SOI-46
 TOTAL SHEETS 59

DES BY: <u>L. GUALTIERI</u>	DATE: <u>06/21</u>	DWG BY: <u>D. CARTER</u>	DATE: <u>06/21</u>
DES CHK: <u>K. DICKENS</u>	DATE: <u>06/21</u>	CHK BY: <u>K. DICKENS</u>	DATE: <u>07/21</u>