

PARTIAL PLAN

NOTES

FOR SECTIONS A-A, B-B, C-C AND VIEW F-F, SEE "SUBSTRUCTURE END BENT 1 SECTIONS AND DETAILS" SHEET 5 OF 6.

THE TOP SURFACE AREAS OF THE END BENT CAP SHALL BE CURED IN ACCORDANCE WITH THE STANDARD SPECIFICATIONS EXCEPT THAT THE MEMBRANE CURING COMPOUND METHOD SHALL NOT BE USED.

BACKWALL SHALL BE PLACED BEFORE APPLYING THE EPOXY PROTECTIVE COATING.

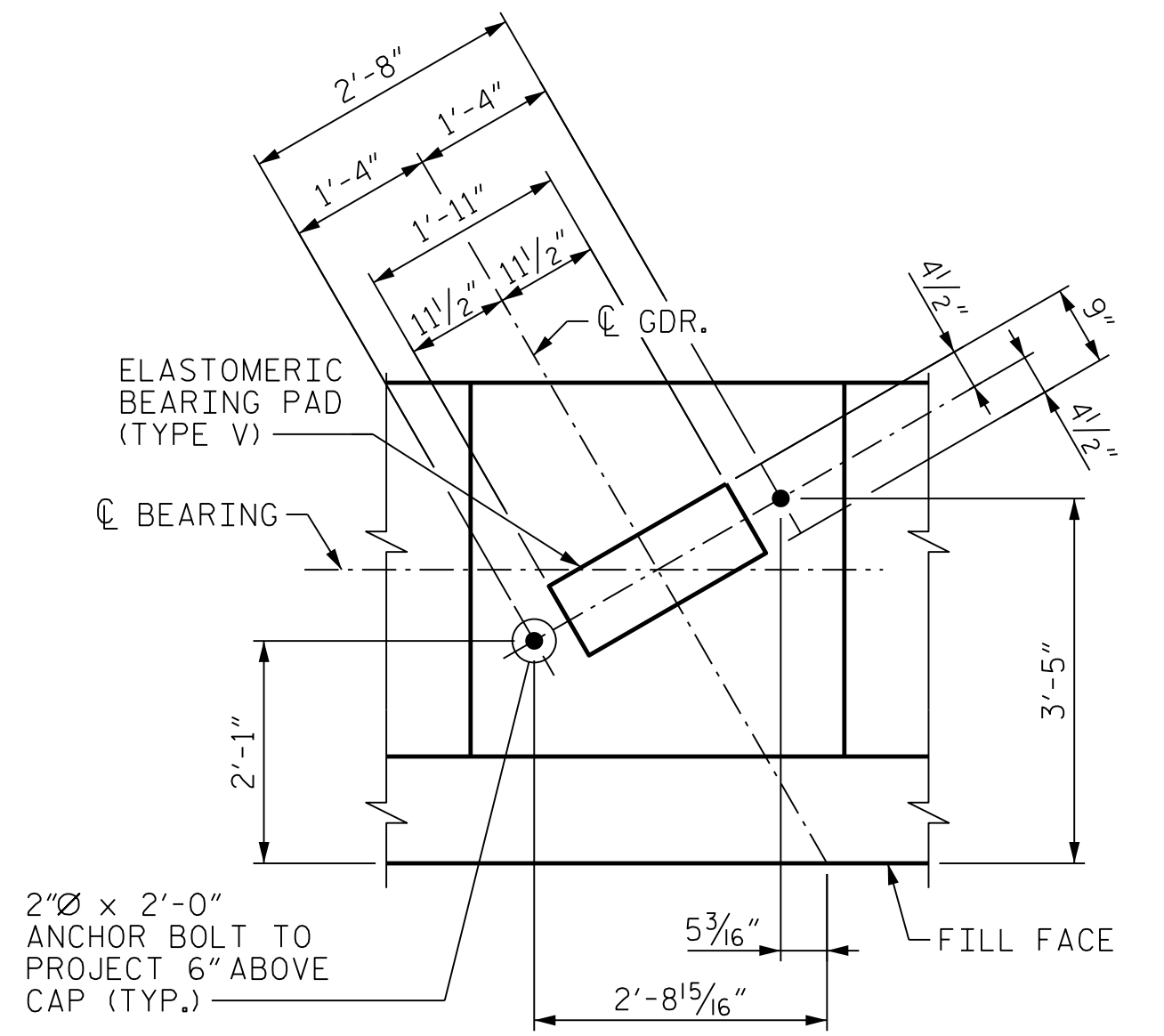
THE TOP SURFACE OF THE END BENT CAP EXCEPT THE BRIDGE SEAT BUILDUPS SHALL BE SLOPED TRANSVERSELY FROM THE FILL FACE TO THE BACK FACE AT THE RATE OF 2%.

STIRRUPS IN THE CAP MAY BE SHIFTED AS NECESSARY TO CLEAR ANCHOR BOLTS.

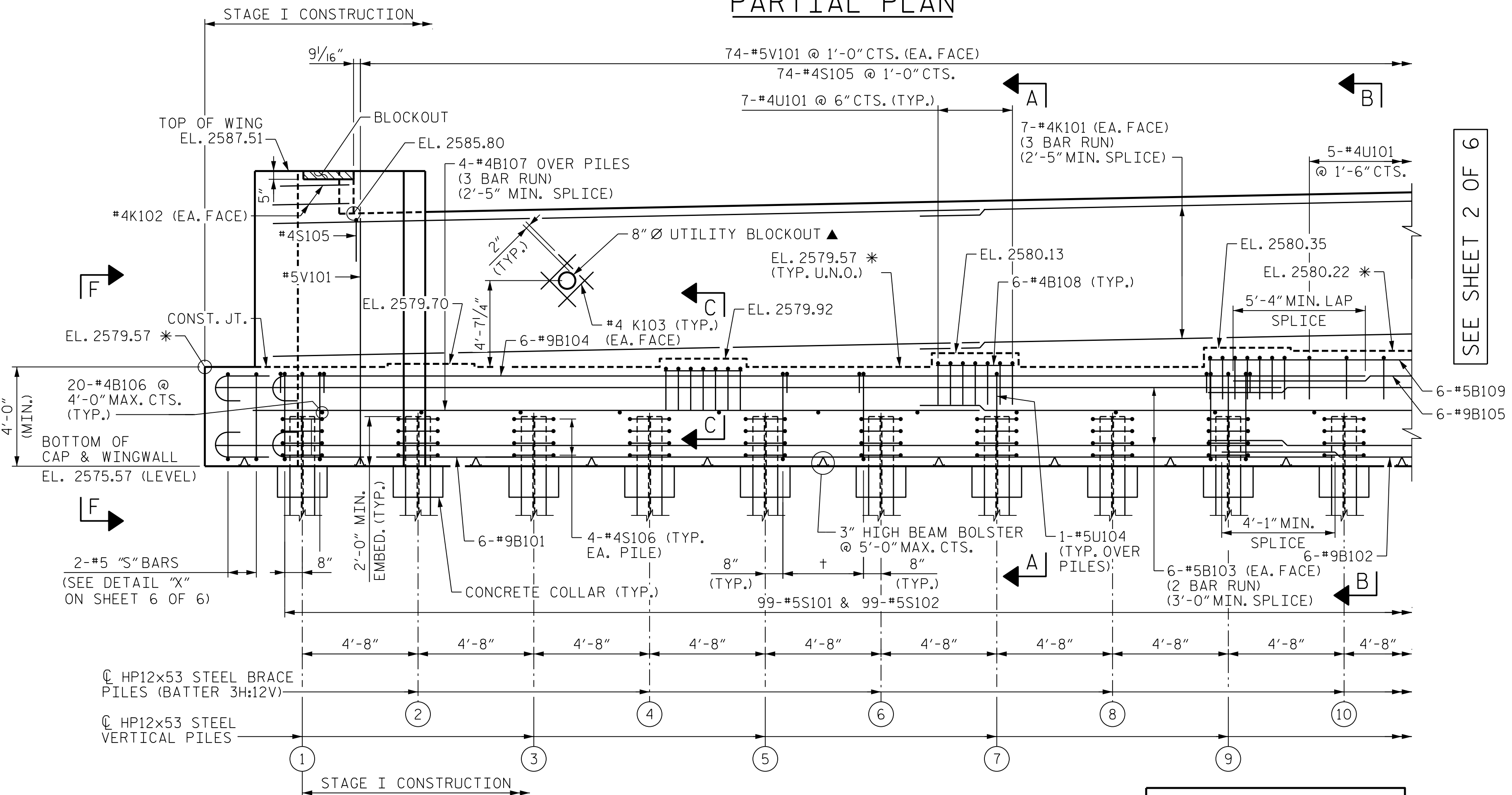
FOR PILE SPLICE DETAILS AND TEMPORARY DRAINAGE AT END BENT DETAIL, SEE "SUBSTRUCTURE END BENT 1 BILL OF MATERIALS" SHEET 6 OF 6.

THE CONCRETE IN THE SHADED AREA OF THE WING SHALL BE POURED AFTER THE JOINT BETWEEN THE BARRIER RAIL (PARAPET AND END POST) ARE CAST IF SLIP FORMING IS USED.

REINFORCING STEEL IN THE BACKWALL MAY BE SHIFTED SLIGHTLY AS NECESSARY TO CLEAR THE UTILITY BLOCKOUT



DETAIL "A"



PARTIAL ELEVATION

* FOR LOCATION OF ELEVATION BETWEEN BRIDGE SEAT BUILDUP, SEE "SUBSTRUCTURE END BENT 1 SECTIONS AND DETAILS" SHEET 5 OF 6.

▲ PVC SLEEVE FOR ELECTRICAL CONDUIT, SEE "ELECTRICAL CONDUIT SYSTEM FOR SIGNALS" SHEET FOR DETAILS.

SEE SHEET 2 OF 6

† = 6-#5 "S" BARS @ 8" CTS. (TYP. BTWN. PILES)

PROJECT NO. B-3186/B-5898
HAYWOOD COUNTY
 STATION: 42+71.13 -L-

SHEET 1 OF 6

STATE OF NORTH CAROLINA
 DEPARTMENT OF TRANSPORTATION
 RALEIGH

**SUBSTRUCTURE
 END BENT 1
 PLAN AND ELEVATION
 STAGE 1**

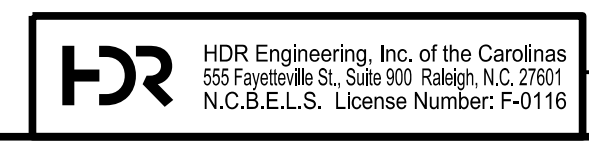


1/25/2022

REVISIONS					
NO.	BY:	DATE:	NO.	BY:	DATE:
1			3		
2			4		

PLOT DRIVER: NCDOT_STRUCTURES_DEFAULT_PLOTTER.plt
 PENTABLE: NCDOT_STRUCTURES_DEFAULT_PEN.tbl
 USER: PETERSON DATE: 1/25/2022 TIME: 8:31:49 AM
 FILE: ... \401.185.B5898B3186.SMU.EL.038-430168.dgn

DES BY: K. DICKENS DATE: 06/21 DWG BY: B. PETERSON DATE: 06/21
 DES CHK: L. GUALTIERI DATE: 06/21 CHK BY: K. DICKENS DATE: 07/21



DOCUMENT NOT CONSIDERED FINAL
 UNLESS ALL SIGNATURES COMPLETED

SHEET NO. 301-38
 TOTAL SHEETS 59