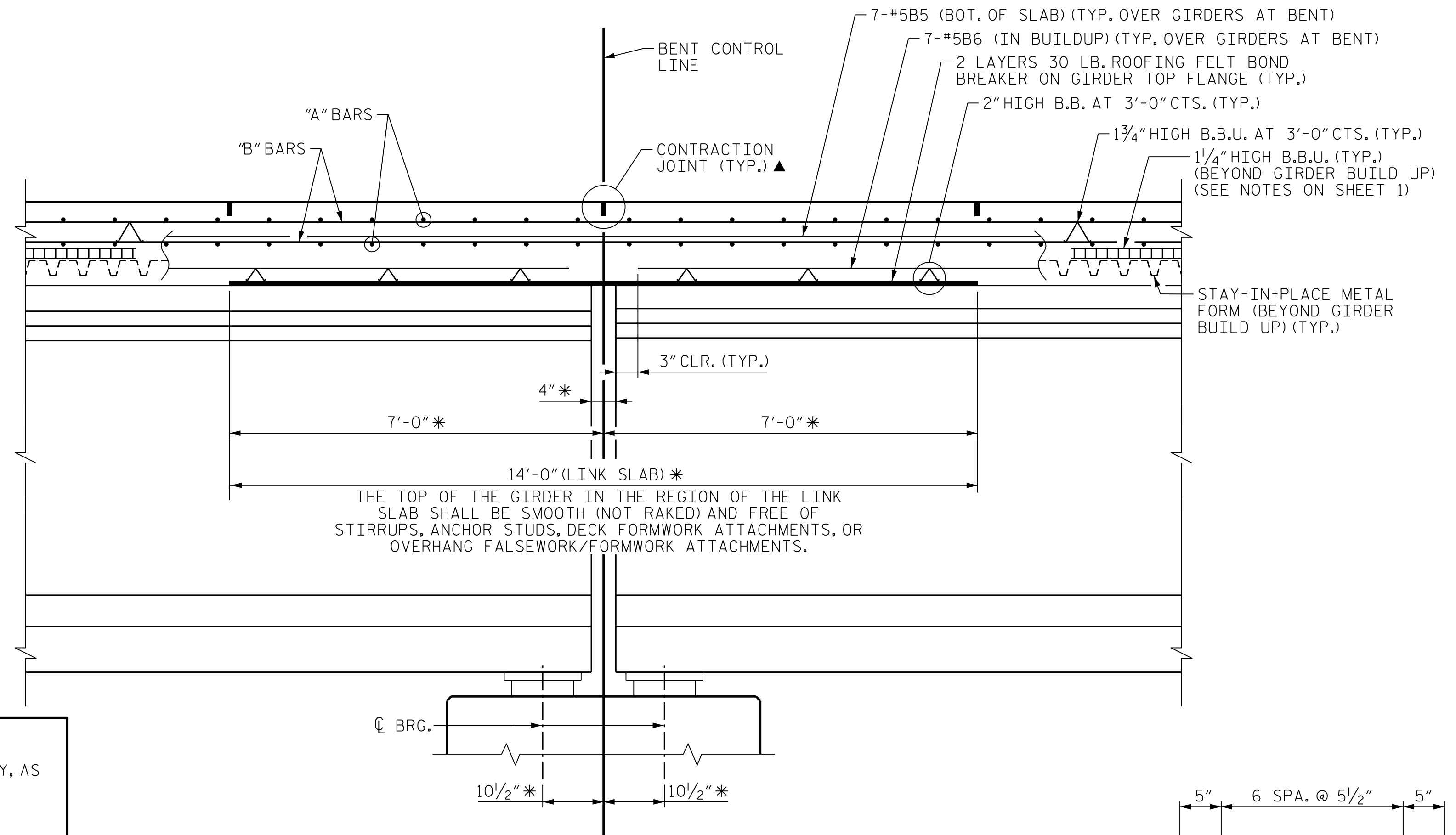
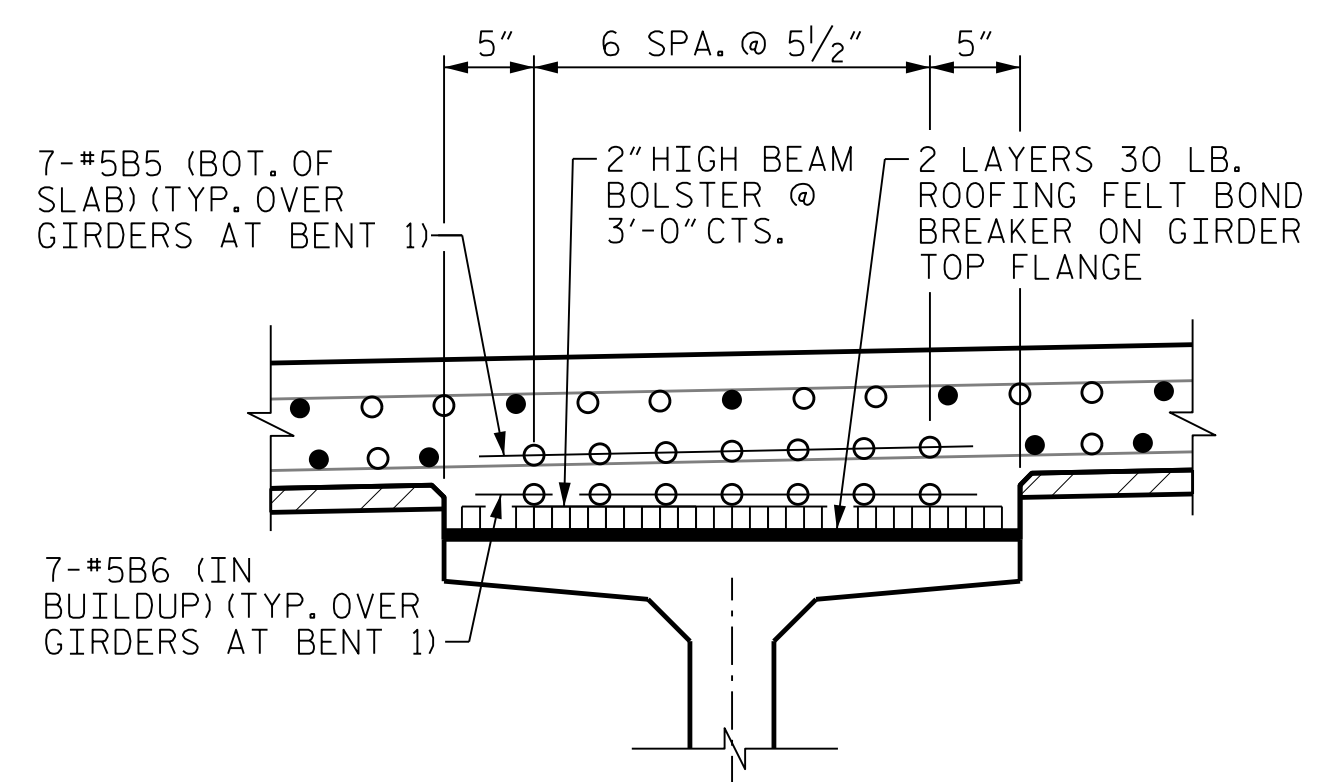


SECTION A-A
(END BENT 1 SHOWN, END BENT 2 SIMILAR)

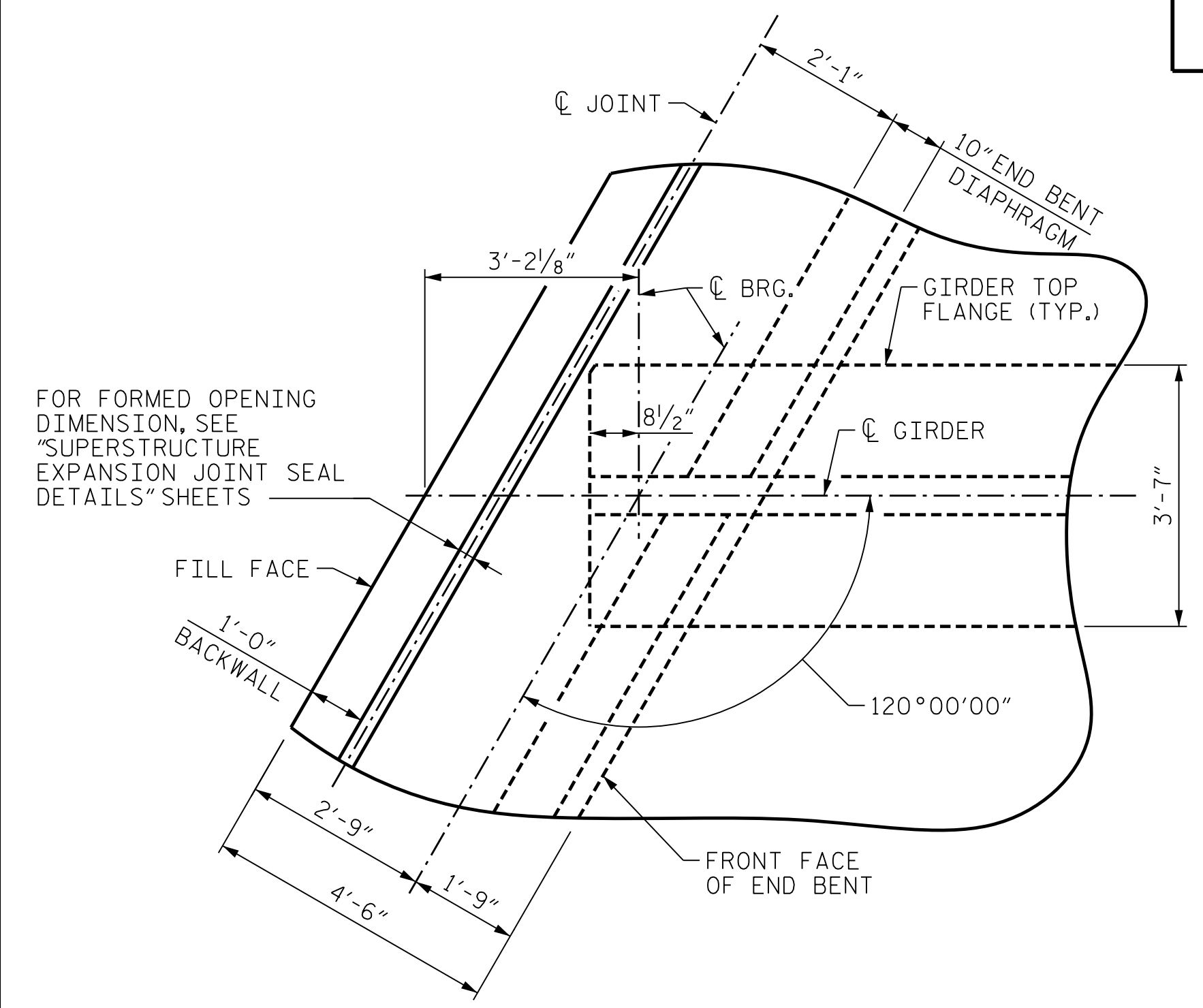
* MEASURED ALONG C OF GIRDER
 ** #5 "G" BAR MAY BE SHIFTED SLIGHTLY, AS NECESSARY, TO CLEAR REINFORCING STEEL AND STIRRUPS.
 ▲ A 1 1/2" DEEP, 3/8" WIDE CONTRACTION JOINT AT BENT CONTROL LINE AND AT ENDS OF LINK SLAB SHALL BE SAWN WITHIN 24 HOURS OF POURING THE DECK. THE JOINT SHALL BE FILLED WITH JOINT SEALER MATERIAL. THE JOINT SEALER MATERIAL SHALL CONFORM TO THE REQUIREMENTS OF TYPE B LOW MODULUS SILICONE SEALANT. SEE SECTION 1028 OF THE STANDARD SPECIFICATIONS.



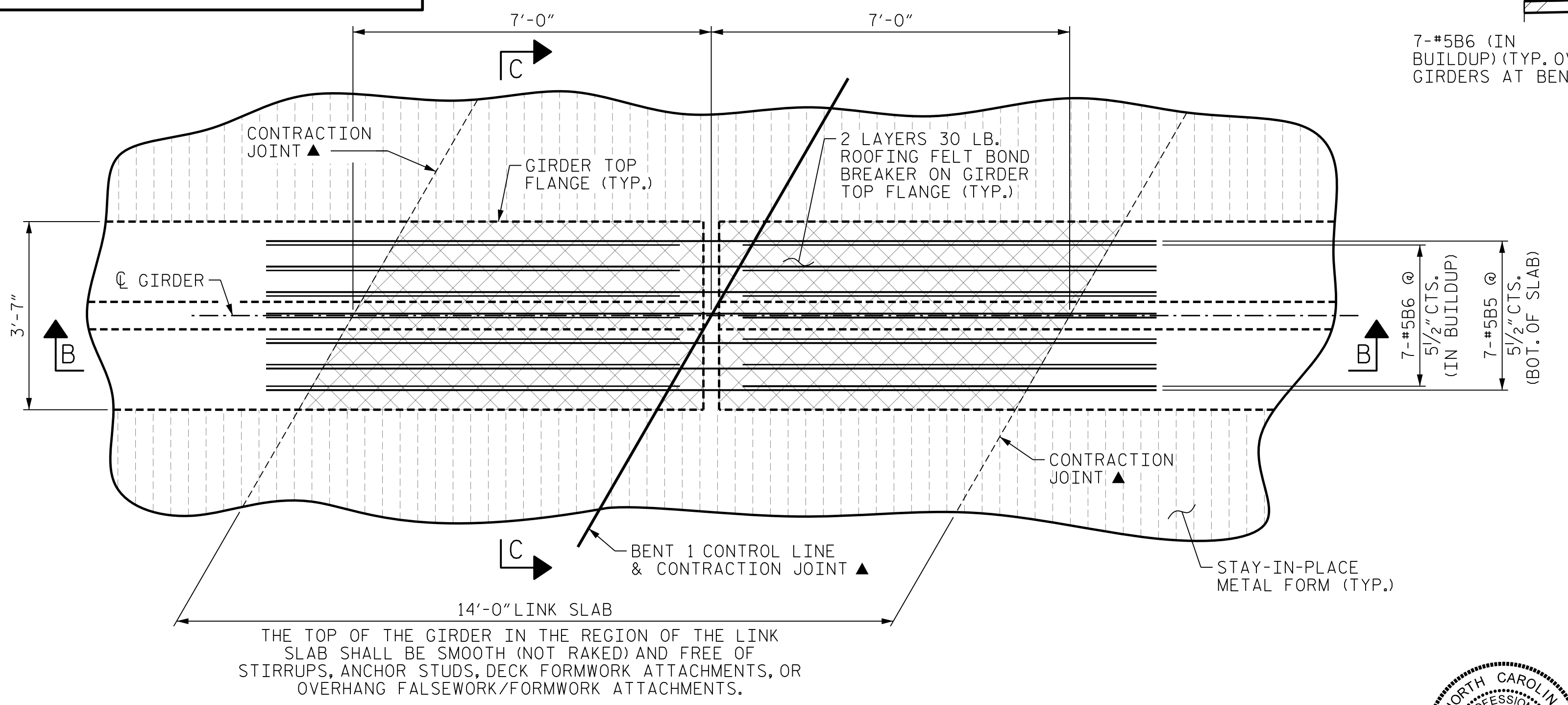
SECTION B-B
(LINK SLAB AT INTERIOR BENT)



SECTION C-C

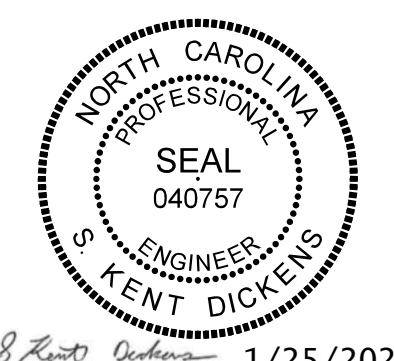


PLAN OF GIRDER AT END BENT
(END BENT 1 SHOWN, END BENT 2 SIMILAR)



PLAN OF GIRDERS AT BENT

PROJECT NO. B-3186/B-5898
 HAYWOOD COUNTY
 STATION: 42+71.13 -L-
 SHEET 4 OF 4



STATE OF NORTH CAROLINA
 DEPARTMENT OF TRANSPORTATION
 RALEIGH

SUPERSTRUCTURE TYPICAL SECTION DETAILS

REVISIONS						SHEET NO.	
NO.	BY:	DATE:	NO.	BY:	DATE:	SOI-10	
1	--	--	3	--	--	TOTAL SHEETS	
2	--	--	4	--	--	59	

DES BY: <u>H. ABU NIMEH</u>	DATE: <u>05/21</u>	DWG BY: <u>B. PETERSON</u>	DATE: <u>05/21</u>
DES CHK: <u>K. DICKENS</u>	DATE: <u>05/21</u>	CHK BY: <u>K. DICKENS</u>	DATE: <u>06/21</u>

HDR HDR Engineering, Inc. of the Carolinas
 555 Fayetteville St., Suite 900 Raleigh, N.C. 27601
 N.C.B.E.L.S. License Number: P-0116

1/25/2022
 DOCUMENT NOT CONSIDERED FINAL
 UNLESS ALL SIGNATURES COMPLETED

PLOT DRIVER: NCDOT_STRUCTURE_DEFAULT_PLOTTER.plt PENTABLE: NCDOT_STRUCTURE_DEFAULT_PEN.tbl
 USER: PPRETERSO DATE: 1/25/2022 TIME: 8:26:41 AM
 FILE: ... \401_045_B5898B3186_SMU_TS_010_430168.dgn