
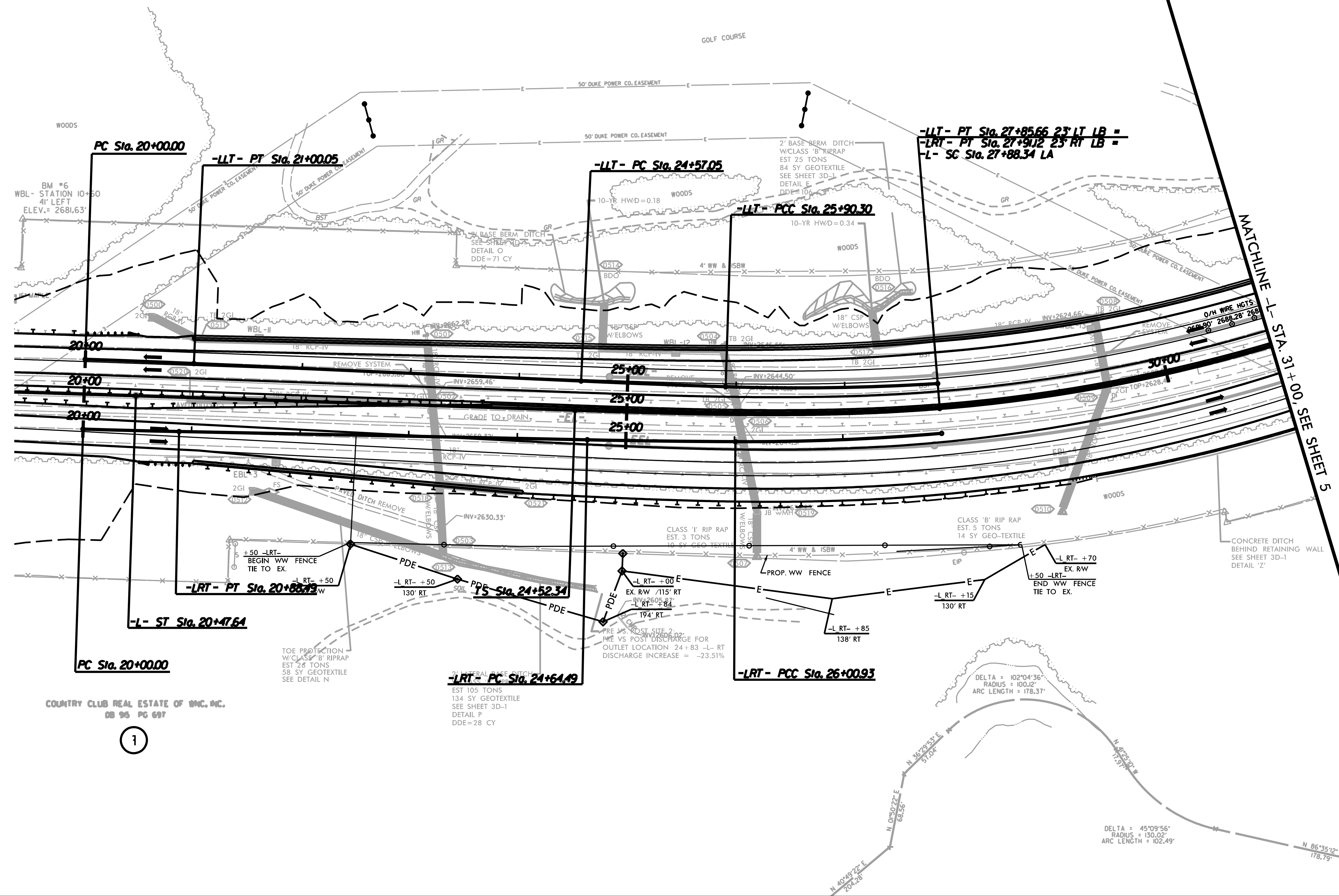


PROJECT REFERENCE NO.	SHEET NO.
B-3186 /B-5898	UO-4
THIS SHEET CORRESPONDS TO RDY-4	
UTILITIES BY OTHERS	
 HDR Engineering, Inc. of the Carolinas 555 Fayetteville St. Suite 900 Raleigh, N.C. 27601 N.C.B.E.L.S. License Number: F-0116	



LAKE JUMALUSKA
ASSEMBLY, INC
DB 34 PG 476



MATCHLINE - L - STA. 31+00. SEE SHEET 5

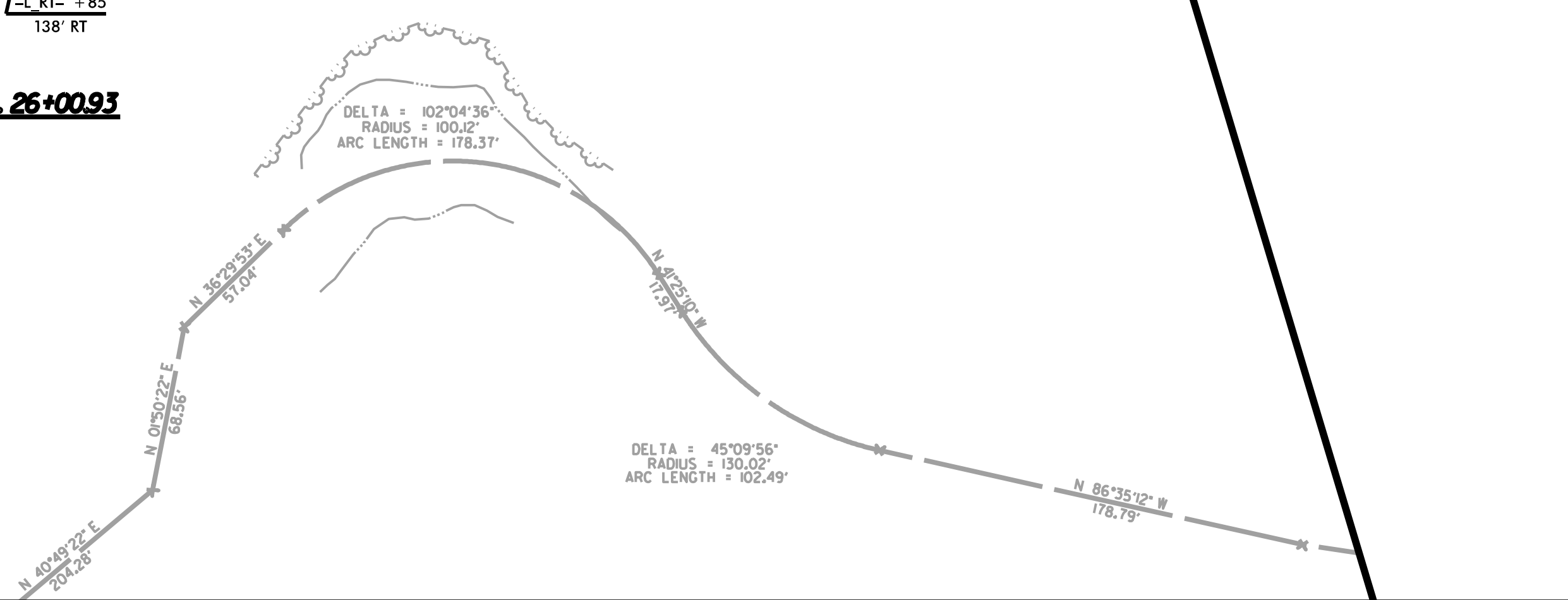
COUNTRY CLUB REAL ESTATE OF WNC, INC.
DB 96 PG 697

1

REVISIONS

PENTABLE: NCDOT_pshpfl.LUTL-UC.MODIFIED.tbl
TIME: 9:40:59 AM

PLOT DRIVER: NCDOT_pdf.mono.eng.50.plt
USER: BEATRICH
DATE: 1/11/2022
FILE:



DELTA = 45°09'56"
RADIUS = 130.02'
ARC LENGTH = 102.49'

N 86°35'12\"/>