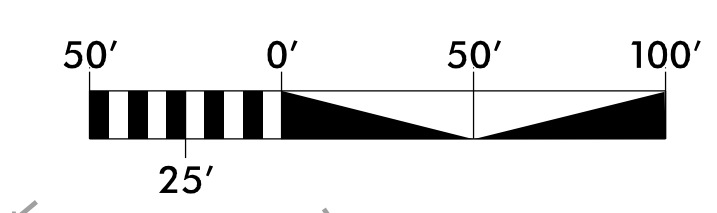


PROJECT REFERENCE NO. B-3186 / B-5898	SHEET NO. UC-4
DESIGNED BY: VHM	
DRAWN BY: VHM	
CHECKED BY: MWW	
APPROVED BY:	
REVISED:	UTILITY CONSTRUCTION PLANS ONLY
NORTH CAROLINA DEPARTMENT OF TRANSPORTATION UTILITIES ENGINEERING SECTION PHONE: (919) 707-6690 FAX: (919) 250-4151	



**UTILITY CONSTRUCTION**

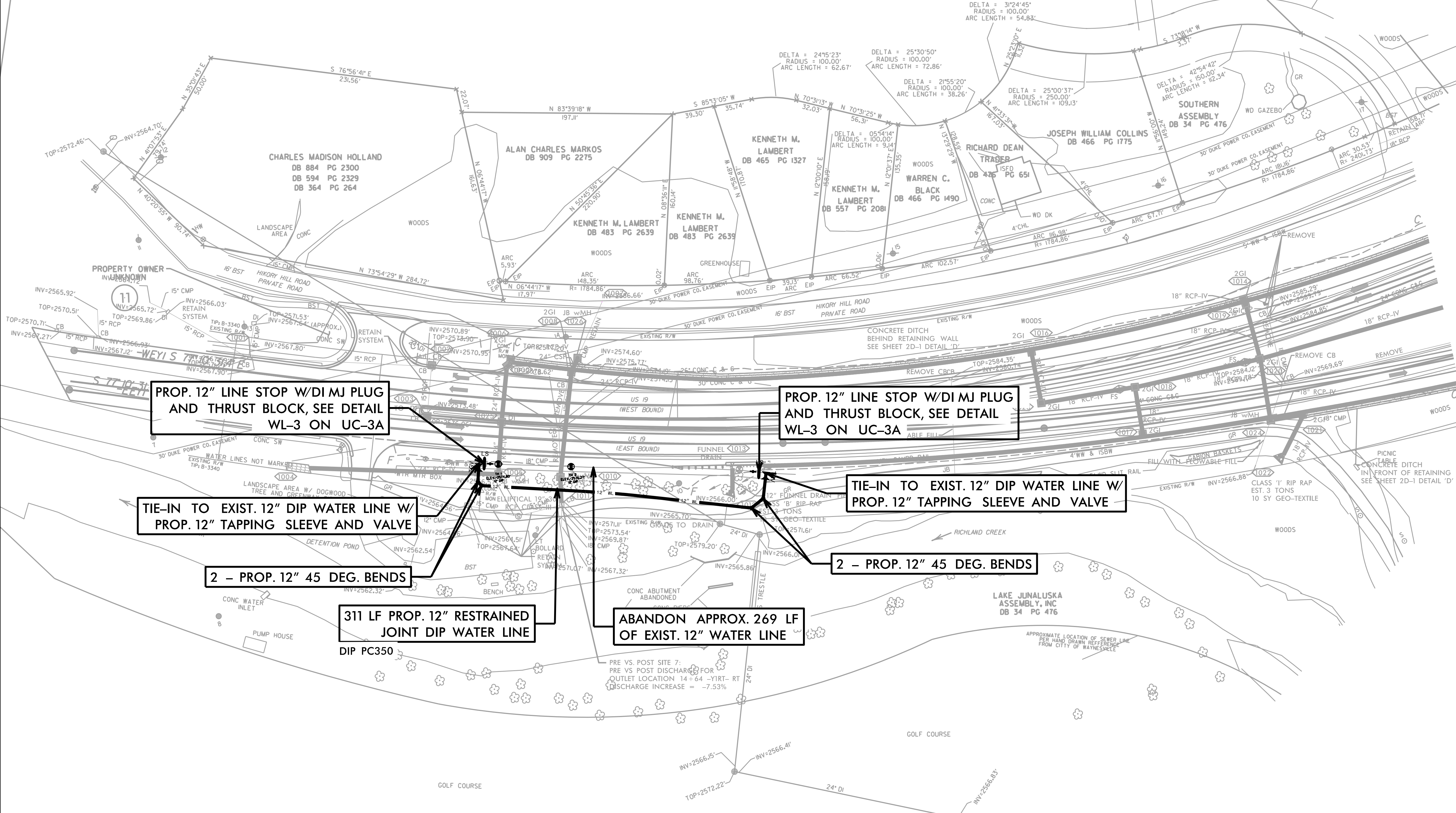
**DOCUMENT NOT CONSIDERED FINAL  
UNLESS ALL SIGNATURES COMPLETED**

**HDR** HDR Engineering, Inc. of the Carolinas  
555 Fayetteville St, Suite 900 Raleigh, N.C. 27601  
N.C.B.E.L.S. License Number: F-0116

**UTILITY OWNERS**  
DUKE ENERGY CAROLINAS  
217 CRAIG MANOR ROAD  
LANCASTER, S.C. 29720  
AT&T  
P.O. BOX 53704  
ATLANTA, GA. 30353  
TOWN OF WAYNESVILLE  
16 SOUTH MAIN STREET  
P.O. BOX 100  
WAYNESVILLE, N.C. 28786  
TOWN OF WAYNESVILLE  
16 SOUTH MAIN STREET, P.O. BOX 100  
WAYNESVILLE, N.C. 28786  
LAKE JUNALUSKA ASSEMBLY PUBLIC WORKS  
91N. LAKESHORE DRIVE  
LAKE JUNALUSKA, N.C. 28745  
JUNALUSKA SANITARY DISTRICT  
558 OLD CLYDE ROAD  
CLYDE, N.C. 28721

PRE VS. POST SITE 4:  
(LOCATED IN EXISTING DRAW  
TO RICHLAND CREEK, 42' PAST  
END OF PLANSHEET)  
  
PRE VS. POST DISCHARGE FOR  
OUTLET LOCATION 8+53 -YILT- LT  
DISCHARGE INCREASE = 0.61%

LAKE JUNALUSKA  
ASSEMBLY, INC  
DB 34 PG 476



**PROP. 12" LINE STOP W/DI MJ PLUG  
AND THRUST BLOCK, SEE DETAIL  
WL-3 ON UC-3A**

**PROP. 12" LINE STOP W/DI MJ PLUG  
AND THRUST BLOCK, SEE DETAIL  
WL-3 ON UC-3A**

**TIE-IN TO EXIST. 12" DIP WATER LINE W/  
PROP. 12" TAPPING SLEEVE AND VALVE**

**TIE-IN TO EXIST. 12" DIP WATER LINE W/  
PROP. 12" TAPPING SLEEVE AND VALVE**

**2 - PROP. 12" 45 DEG. BENDS**

**2 - PROP. 12" 45 DEG. BENDS**

**311 LF PROP. 12" RESTRAINED  
JOINT DIP WATER LINE  
DIP PC350**

**ABANDON APPROX. 269 LF  
OF EXIST. 12" WATER LINE**

2/24/2023 11:32:33 AM B-3186-B5898-UC\_PSH3.dgn