

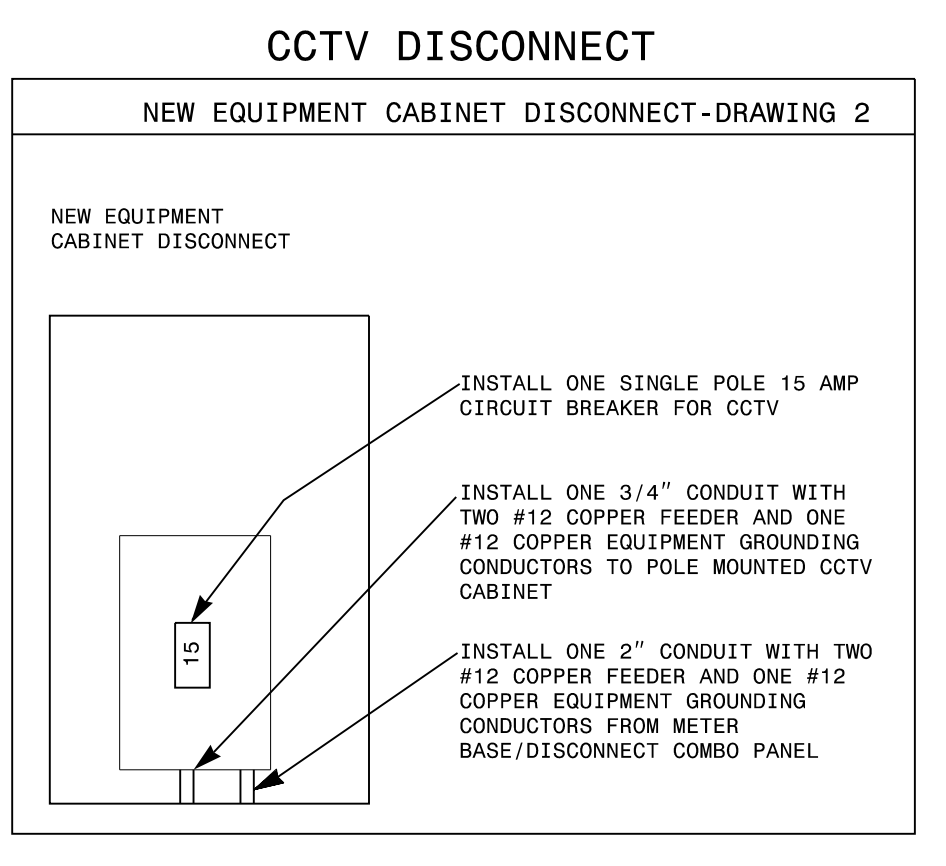
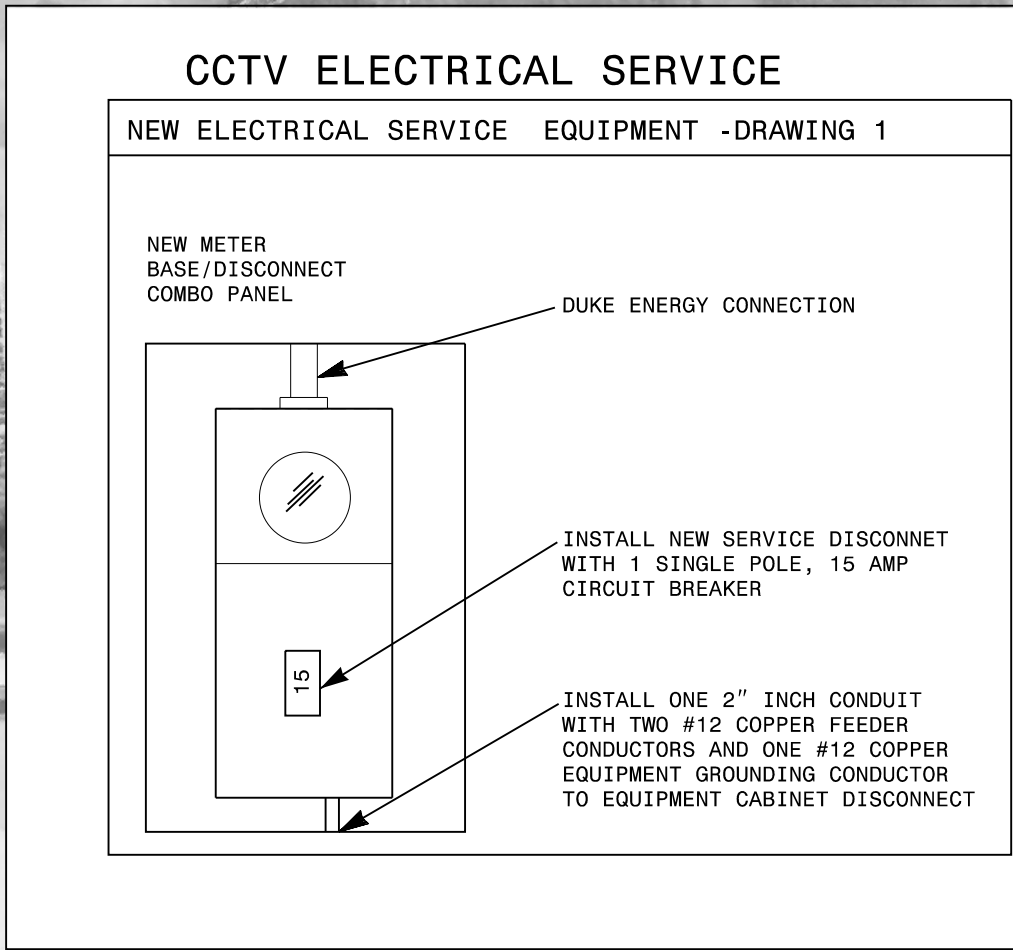
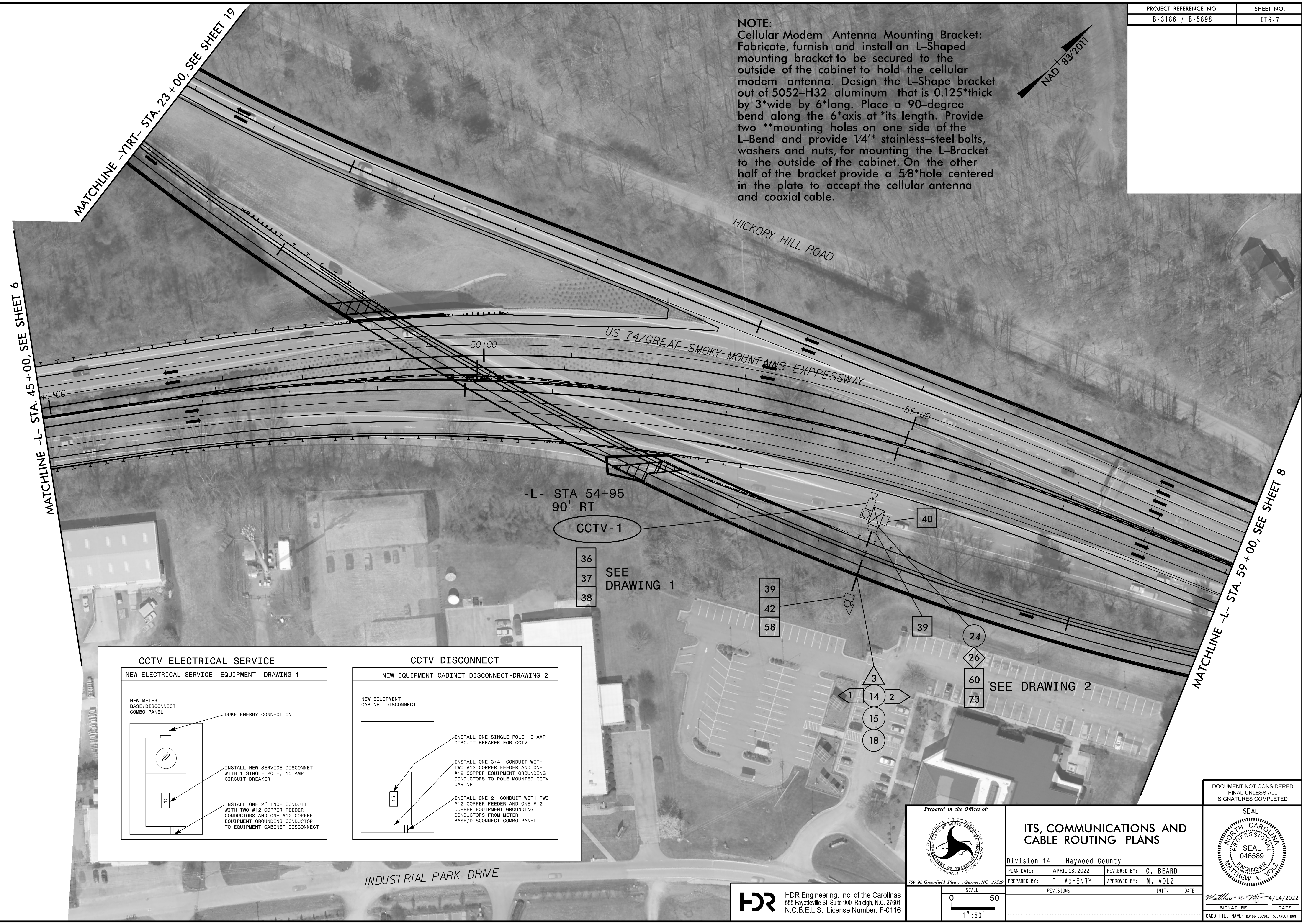


**NOTE:**  
 Cellular Modem Antenna Mounting Bracket:  
 Fabricate, furnish and install an L-Shaped mounting bracket to be secured to the outside of the cabinet to hold the cellular modem antenna. Design the L-Shape bracket out of 5052-H32 aluminum that is 0.125" thick by 3" wide by 6" long. Place a 90-degree bend along the 6" axis at its length. Provide two \*\*mounting holes on one side of the L-Bend and provide 1/4" stainless-steel bolts, washers and nuts, for mounting the L-Bracket to the outside of the cabinet. On the other half of the bracket provide a 5/8" hole centered in the plate to accept the cellular antenna and coaxial cable.

MATCHLINE -Y/RT- STA. 23+00, SEE SHEET 19

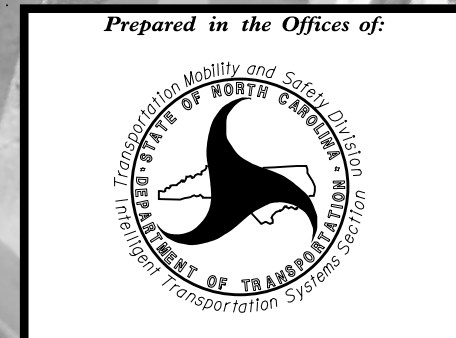
MATCHLINE -L- STA. 45+00, SEE SHEET 6

MATCHLINE -L- STA. 59+00, SEE SHEET 8



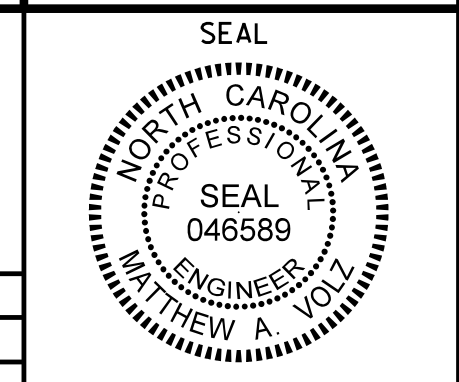
4/13/2022  
 C:\pwworking\hdr\project\101\k02234965\483186-186-1865898-1.ITS\_PSH07.dgn  
 22:19:18

DOCUMENT NOT CONSIDERED FINAL UNLESS ALL SIGNATURES COMPLETED

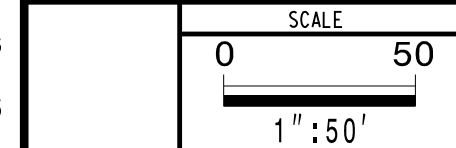


**ITS, COMMUNICATIONS AND CABLE ROUTING PLANS**

Division 14 Haywood County  
 PLAN DATE: APRIL 13, 2022 REVIEWED BY: C. BEARD  
 PREPARED BY: T. MCHENRY APPROVED BY: M. VOLZ



**HDR** HDR Engineering, Inc. of the Carolinas  
 555 Fayetteville St, Suite 900 Raleigh, N.C. 27601  
 N.C.B.E.L.S. License Number: F-0116



REVISIONS	INIT.	DATE

Matthew A. Volz 4/14/2022  
 SIGNATURE DATE  
 CADD FILE NAME: 83186-85898-1.ITS\_LAYOUT.DGN