



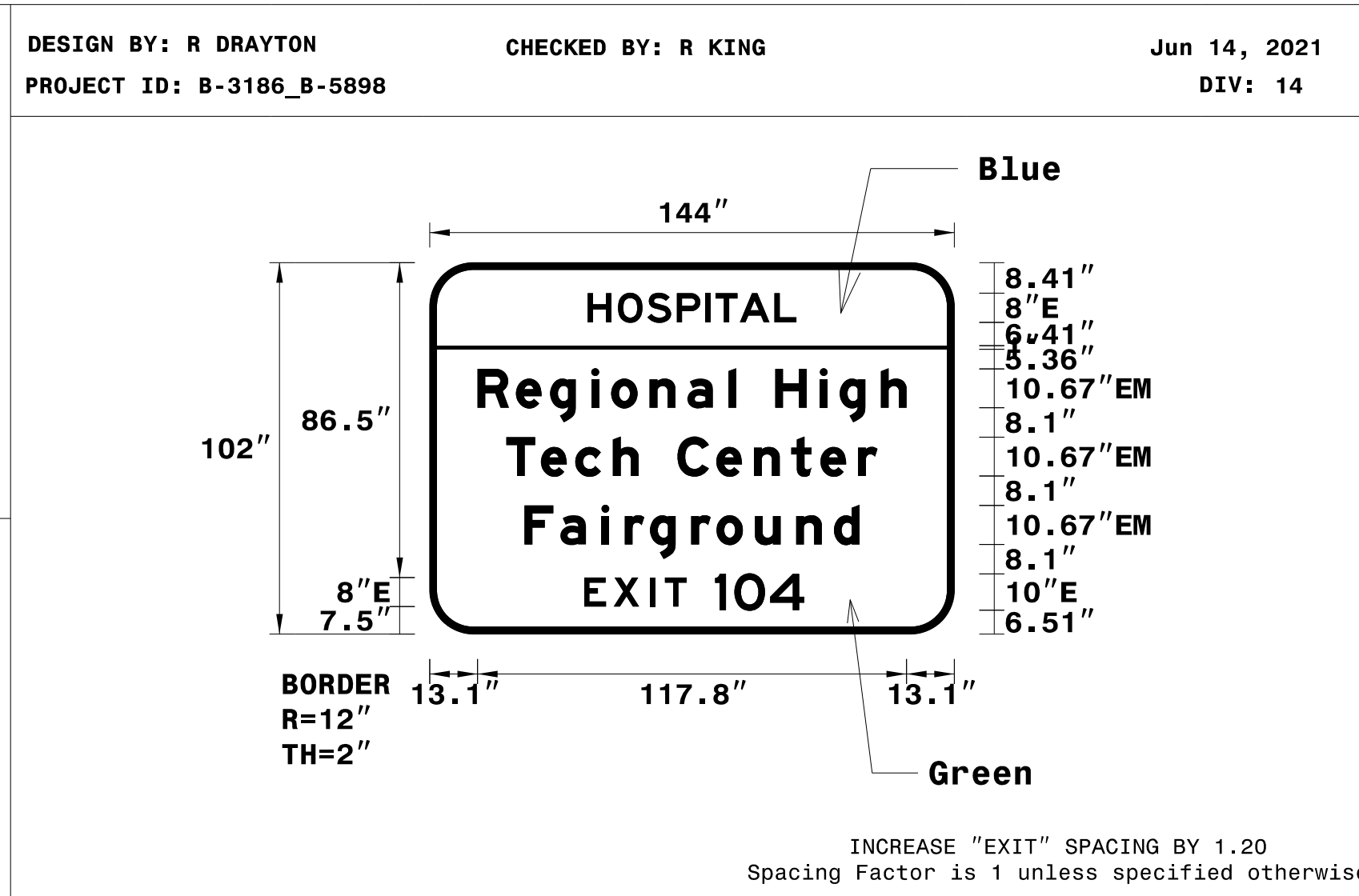
PROJECT REFERENCE NO. B-3186 / B-5898	SHEET NO. SIGN-4G
SIGNING ENGINEER	
	
3/16/2022	
DOCUMENT NOT CONSIDERED FINAL UNLESS ALL SIGNATURES COMPLETED	
 HDR Engineering, Inc. of the Carolinas 555 Fayetteville St. Suite 900 Raleigh, N.C. 27601 N.C.B.E.L.S. License Number: F-0116	

SIGN NUMBER: 103
 TYPE: A
 QUANTITY: 1
 SIGN WIDTH: 12'-0"
 HEIGHT: 8'-6"
 TOTAL AREA: 102.0 Sq.Ft.
 BORDER TYPE: FLUSH
 RECESS: 0"
 WIDTH: 2"
 RADII: 12"
 NO. Z BARS: 3
 LENGTH: 136.0

BACKG COLOR: Blue/Green
 COPY COLOR: White

SYMBOL	X	Y	WID	HT

MAT'L: 0.125" (3.2 mm) ALUMINUM



USE NOTES: 1 & 2

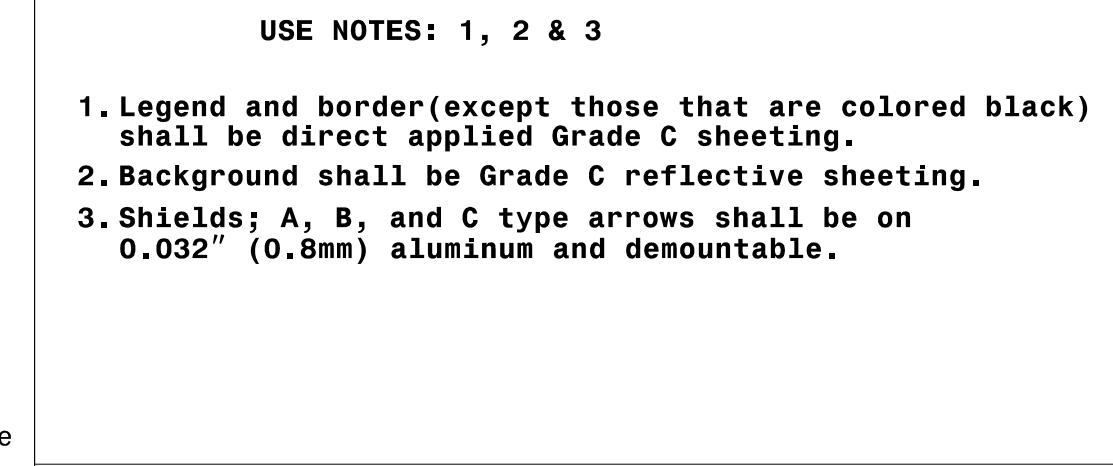
- Legend and border(except those that are colored black) shall be direct applied Grade C sheeting.
- Background shall be Grade C reflective sheeting.
- Shields; A, B, and C type arrows shall be on 0.032" (0.8mm) aluminum and demountable.

SIGN NUMBER: 104B
 TYPE: A
 QUANTITY: 1
 SIGN WIDTH: 15'-6"
 HEIGHT: 12'-6"
 TOTAL AREA: 193.8 Sq.Ft.
 BORDER TYPE: FLUSH
 RECESS: 0"
 WIDTH: 2"
 RADII: 12"
 NO. Z BARS: 4
 LENGTH: 178.0

BACKG COLOR: Green
 COPY COLOR: White

SYMBOL	X	Y	WID	HT
M1_4	70.5	96.9	45	36

MAT'L: 0.125" (3.2 mm) ALUMINUM



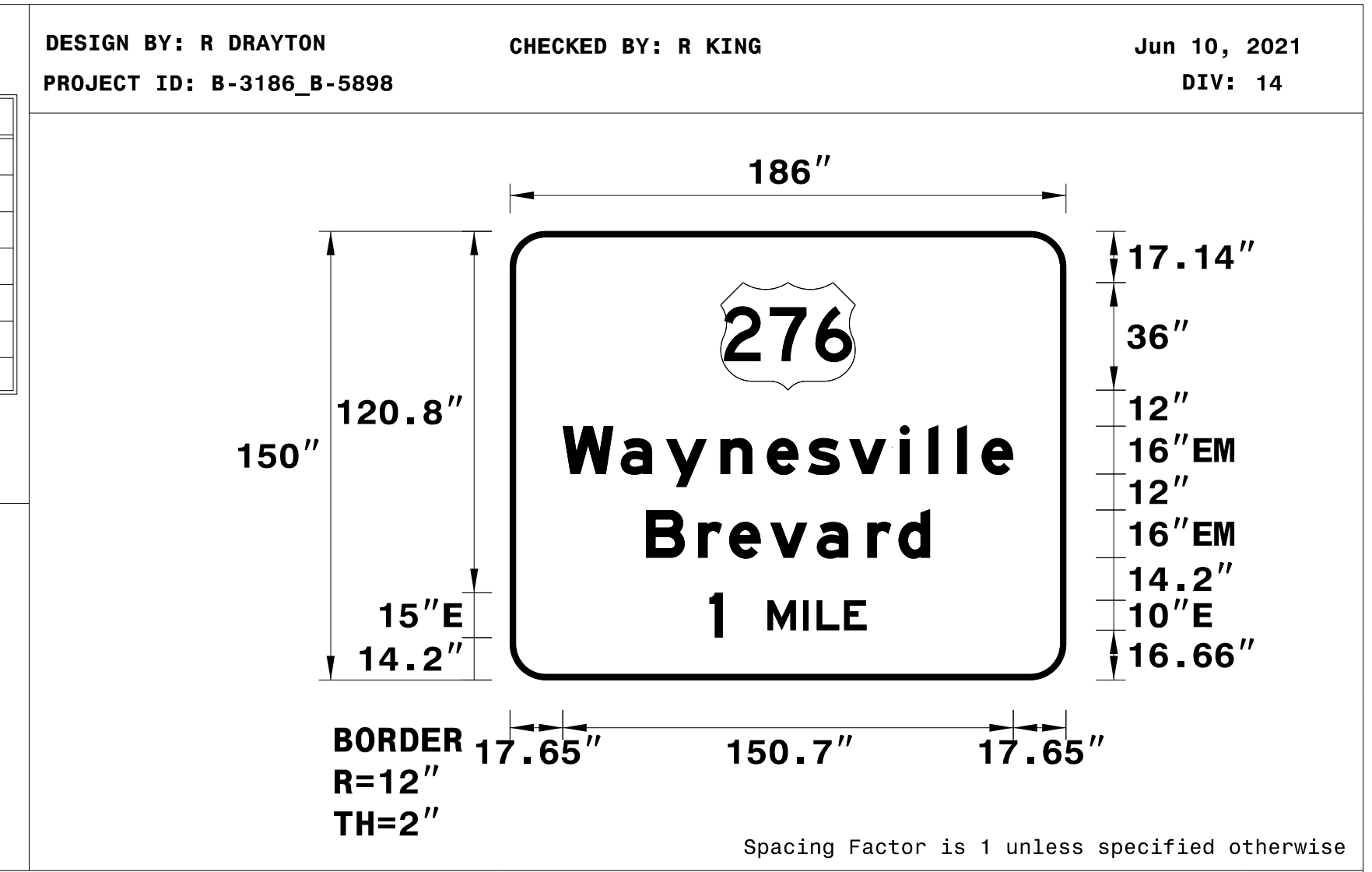
LETTER POSITIONS

Letter spacings are to start of next letter

Letter	Series/Size	Text Length
H O S P I T A L	E 2000	57.3
R e g i o n a l H i g h	EM 2000	117.8
T e c h C e n t e r	EM 2000	101.9
F a i r g r o u n d	EM 2000	92
E X I T	E 2000	28.2
1 0 4	E 2000	24.5

FILENAME: Guidesign_English_8-2-13

NORTH CAROLINA D.O.T. SIGN DETAIL



LETTER POSITIONS

Letter spacings are to start of next letter

Letter	Series/Size	Text Length
W a y n e s v i l l e	EM 2000	150.7
B r e v a r d	EM 2000	95
1 M I L E	E 2000	52.6

FILENAME: Guidesign_English_8-2-13

NORTH CAROLINA D.O.T. SIGN DETAIL

REVISIONS