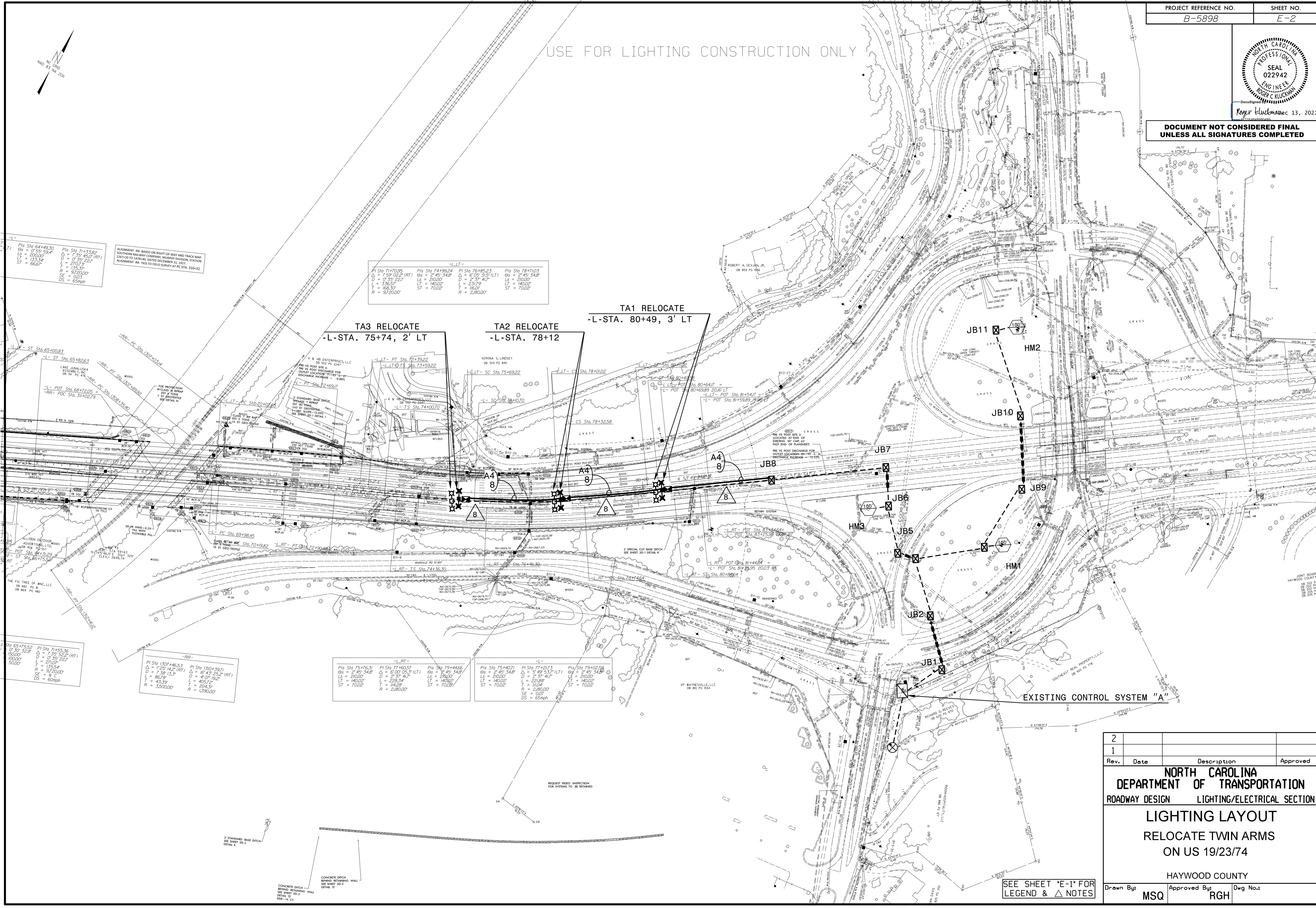


DOCUMENT NOT CONSIDERED FINAL
UNLESS ALL SIGNATURES COMPLETED

USE FOR LIGHTING CONSTRUCTION ONLY



-L-LT-

PI Sta 71+70.95	PI Sta 74+99.24	PI Sta 76+85.23	PI Sta 78+70.03
Δ = 1.59 02.2° (RT)	Δ = 2.45 34.8°	Δ = 6.05 31.5° (LT)	Δ = 2.45 34.8°
D = 133.34'	D = 200.00'	D = 2.57 40.7°	D = 200.00'
L = 133.34'	L = 200.00'	L = 23.79'	L = 140.00'
T = 66.67'	T = 100.00'	T = 16.00'	T = 70.00'
R = 0.00'	R = 0.00'	R = 280.00'	R = 70.00'
ST = 66.67'	ST = 100.00'	ST = 70.00'	ST = 70.00'

TA3 RELOCATE
-L-STA. 75+74, 2' LT

TA2 RELOCATE
-L-STA. 78+12

TA1 RELOCATE
-L-STA. 80+49, 3' LT

-L-

PI Sta 64+49.50	PI Sta 71+53.82
Δ = 0.59 59.4°	Δ = 1.35 45.0° (RT)
D = 200.00'	D = 0.39 22.1°
L = 133.34'	L = 200.00'
T = 66.67'	T = 100.00'
R = 0.00'	R = 0.00'
ST = 66.67'	ST = 100.00'

ALIGNMENT ARE BASED ON RIGHT-OF-WAY AND TRACK MARK
SOUTHERN RAILWAY COMPANY, HUNTER DIVISION, STATION
ALIGNMENT ARE TIED TO FIELD SURVEY AT PC STA. 310+32.

-RR-

PI Sta 65+75.52	PI Sta 71+55.36
Δ = 0.30 32.9°	Δ = 1.35 45.0° (RT)
D = 150.00'	D = 0.39 22.1°
L = 133.34'	L = 200.00'
T = 66.67'	T = 100.00'
R = 0.00'	R = 0.00'
ST = 66.67'	ST = 100.00'

-RR-

PI Sta 1307+46.53	PI Sta 1310+39.21
Δ = 1.25 14.2° (RT)	Δ = 6.43 25.2° (RT)
D = 136.13'	D = 4.07 19.2°
L = 86.76'	L = 40.52'
T = 43.38'	T = 20.43'
R = 3500.00'	R = 1390.00'

-L-RT-

PI Sta 73+70.31	PI Sta 77+40.57	PI Sta 79+44.85
Δ = 2.45 34.8°	Δ = 0.00 05.3° (LT)	Δ = 2.45 34.8°
D = 200.00'	D = 200.00'	D = 200.00'
L = 140.00'	L = 140.00'	L = 140.00'
T = 70.00'	T = 70.00'	T = 70.00'
R = 280.00'	R = 280.00'	R = 280.00'

-L-

PI Sta 75+40.07	PI Sta 77+20.73	PI Sta 79+02.63
Δ = 2.45 34.8°	Δ = 0.49 53.7° (LT)	Δ = 2.45 34.8°
D = 200.00'	D = 2.57 40.7°	D = 200.00'
L = 140.00'	L = 23.79'	L = 140.00'
T = 70.00'	T = 16.00'	T = 70.00'
R = 280.00'	R = 280.00'	R = 70.00'

REQUEST WORD INSPECTION
FOR SYSTEMS TO BE REPAIRED.

SEE SHEET "E-1" FOR
LEGEND & Δ NOTES

2			
1			
Rev.	Date	Description	Approved
NORTH CAROLINA DEPARTMENT OF TRANSPORTATION ROADWAY DESIGN LIGHTING/ELECTRICAL SECTION LIGHTING LAYOUT RELOCATE TWIN ARMS ON US 19/23/74 HAYWOOD COUNTY Drawn By: MSQ Approved By: RGH Dwg No.:			

02_DEC-2021_08:44
 At: \\lighting\c:\local\Lighting Design\Lighting Files\B5898_LE_PSH_E2.dgn
 msquad1 Al RD - 303673