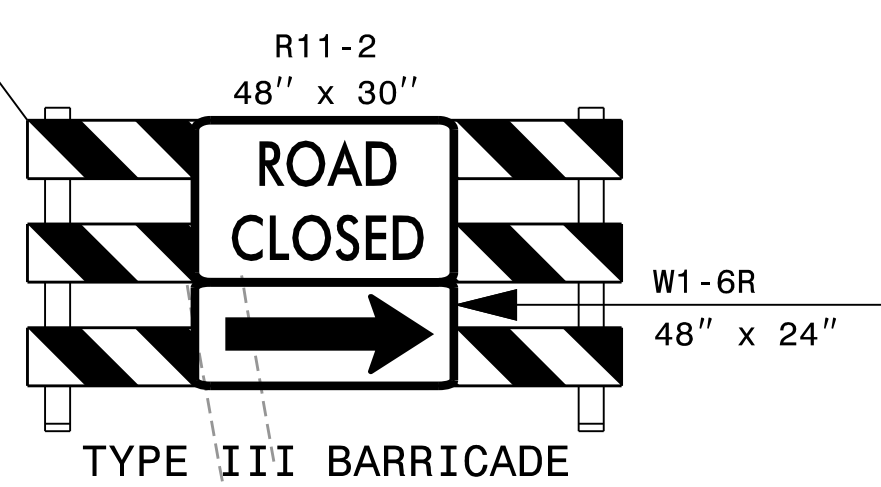
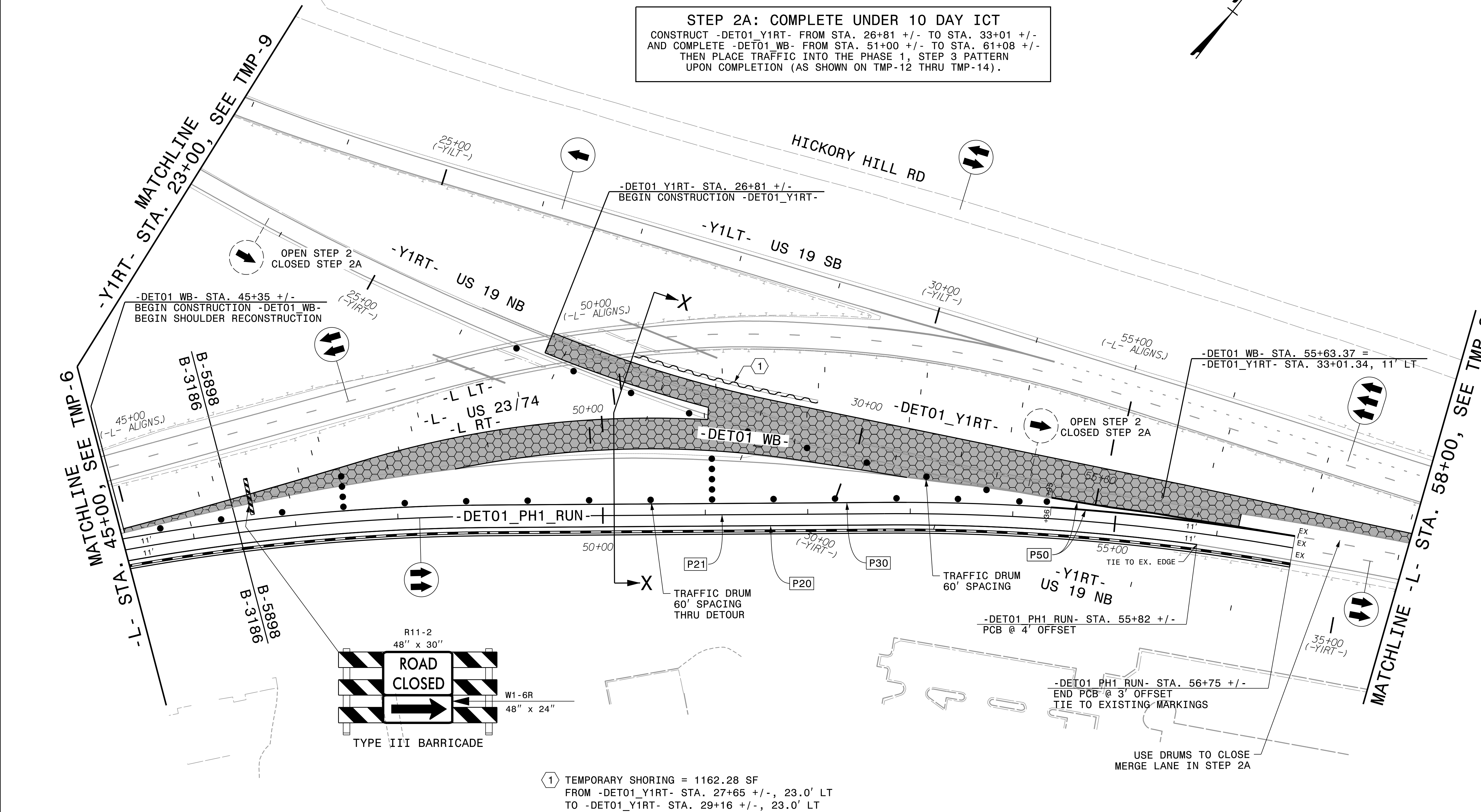
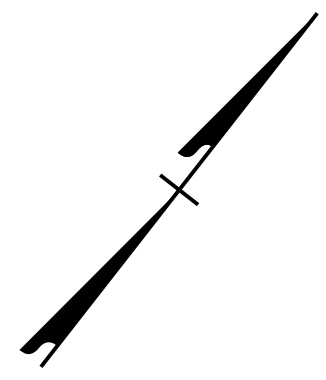
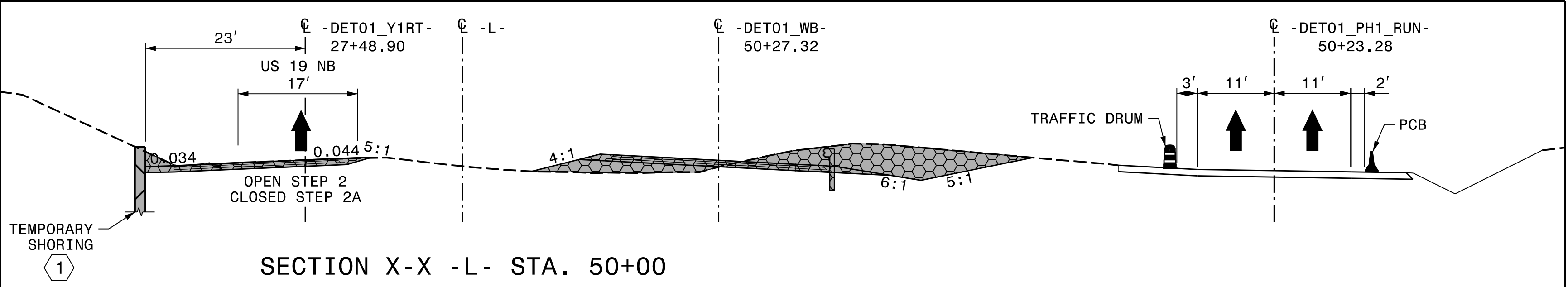


STEP 2A: COMPLETE UNDER 10 DAY ICT
 CONSTRUCT -DET01 Y1RT- FROM STA. 26+81 +/- TO STA. 33+01 +/-
 AND COMPLETE -DET01 WB- FROM STA. 51+00 +/- TO STA. 61+08 +/-
 THEN PLACE TRAFFIC INTO THE PHASE 1, STEP 3 PATTERN
 UPON COMPLETION (AS SHOWN ON TMP-12 THRU TMP-14).



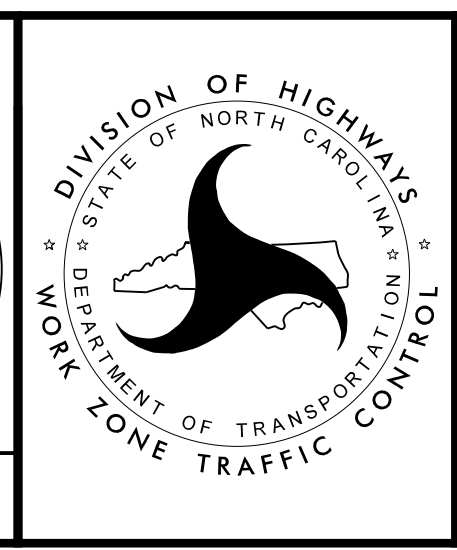
① TEMPORARY SHORING = 1162.28 SF
 FROM -DET01_Y1RT- STA. 27+65 +/-, 23.0' LT
 TO -DET01_Y1RT- STA. 29+16 +/-, 23.0' LT



APPROVED: *Michael T. Rzepka*
 DATE: 3/17/2022

SEAL
 NORTH CAROLINA PROFESSIONAL ENGINEER
 MICHAEL T. RZEPKA
 15876

DOCUMENT NOT CONSIDERED FINAL
 UNLESS ALL SIGNATURES COMPLETED



**PHASE 1
 STEPS 2 & 2A**

PLOT DRIVER: NCDOT_pdf_color_eng_50.pit
 USER: CHARNDEN
 DATE: 1/21/2022
 TIME: 3:59:36 PM
 FILE: p:\p\h\users\charnden\us_east_01\documents\3322\10030389\6.0_CAD_BIM\6.2_Work_In_Progress\B-3186-B-5898_TrafficControl\CP\B3186-B5898-TMP_TMP07.dgn

REVISIONS