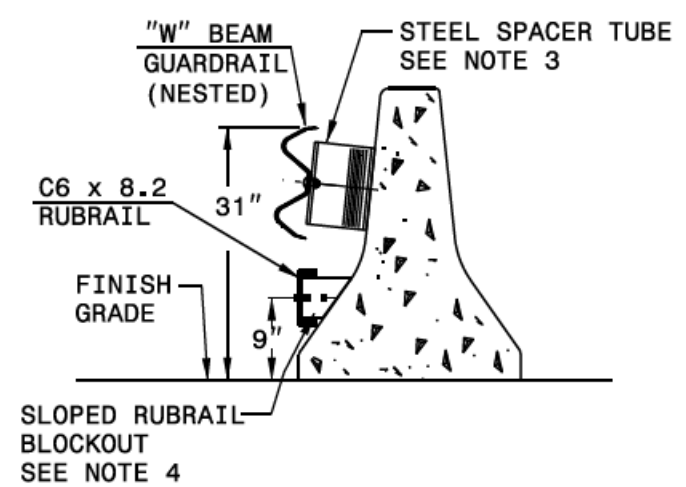
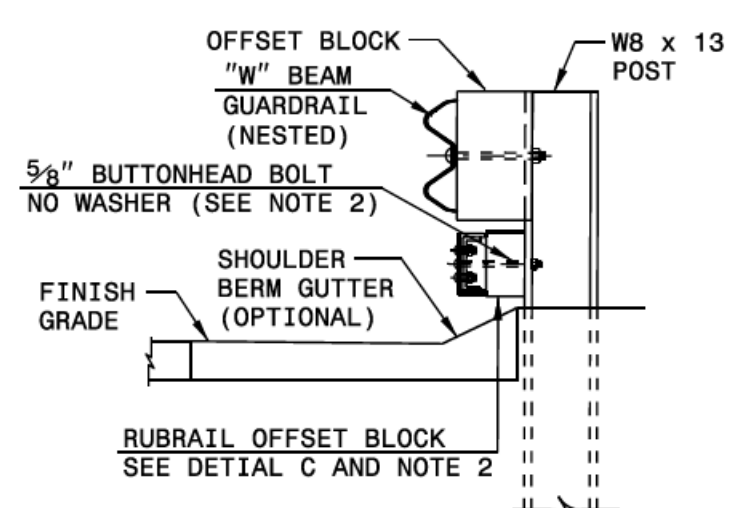


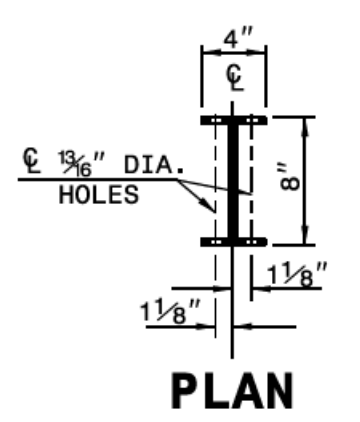
SECTION A-A



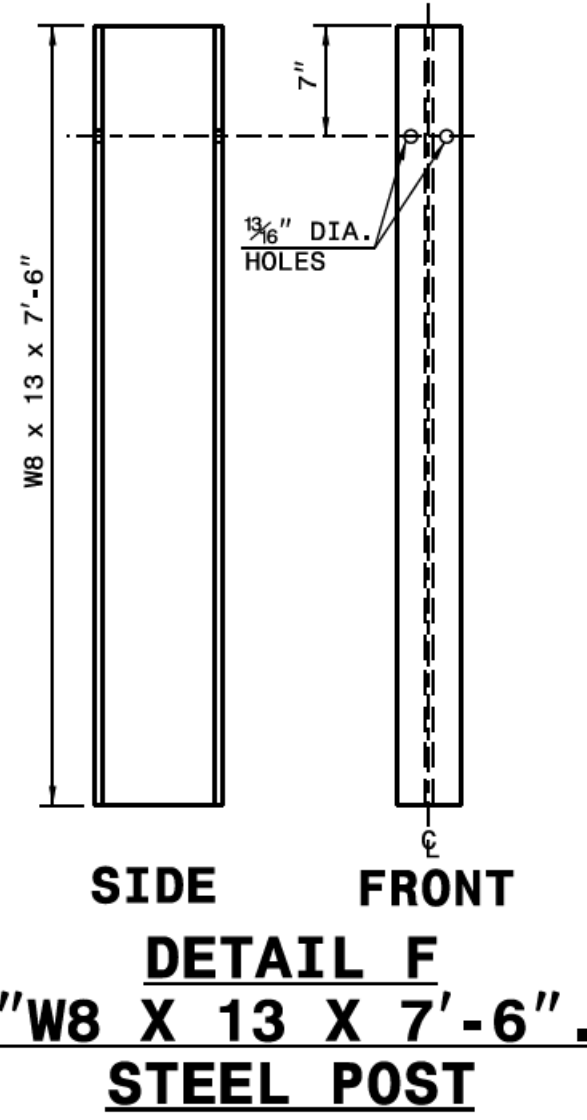
SECTION B-B



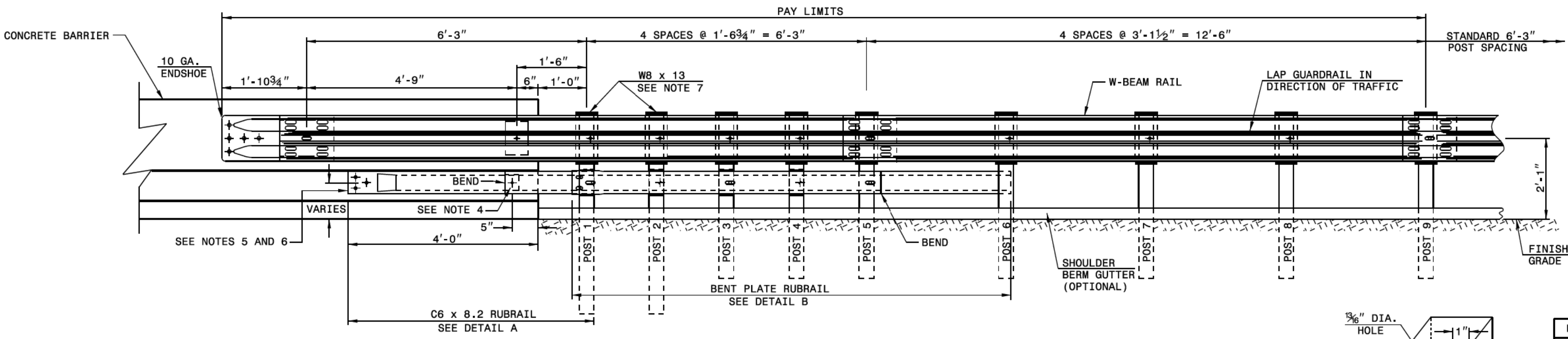
SECTION C-C



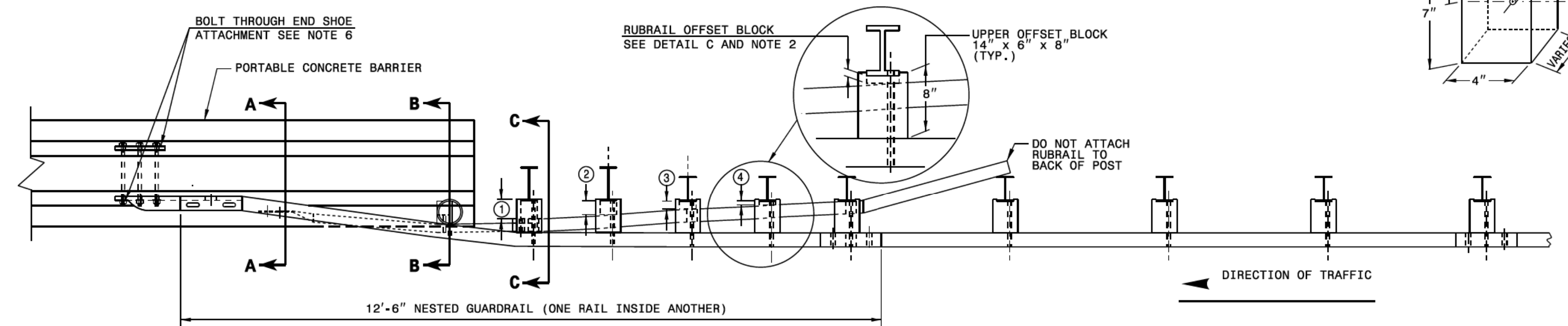
PLAN



DETAIL F
W8 X 13 X 7'-6".
STEEL POST

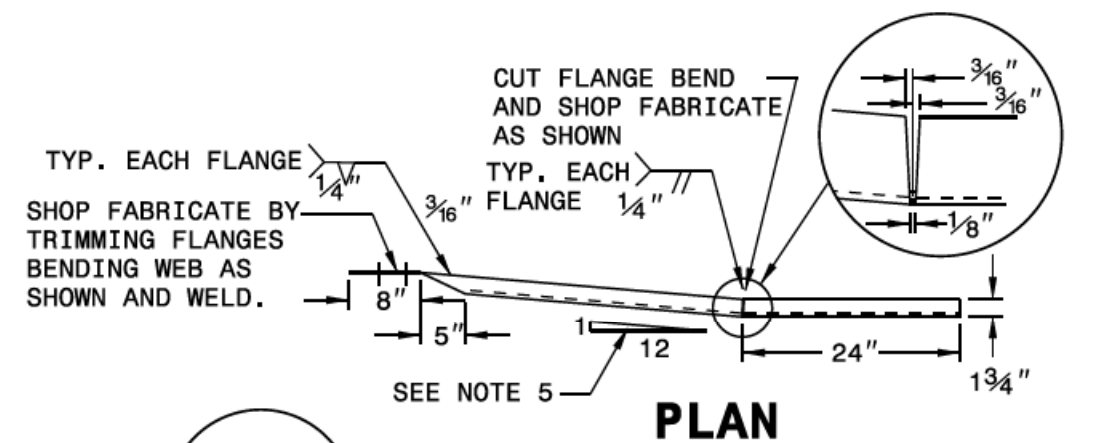


ELEVATION

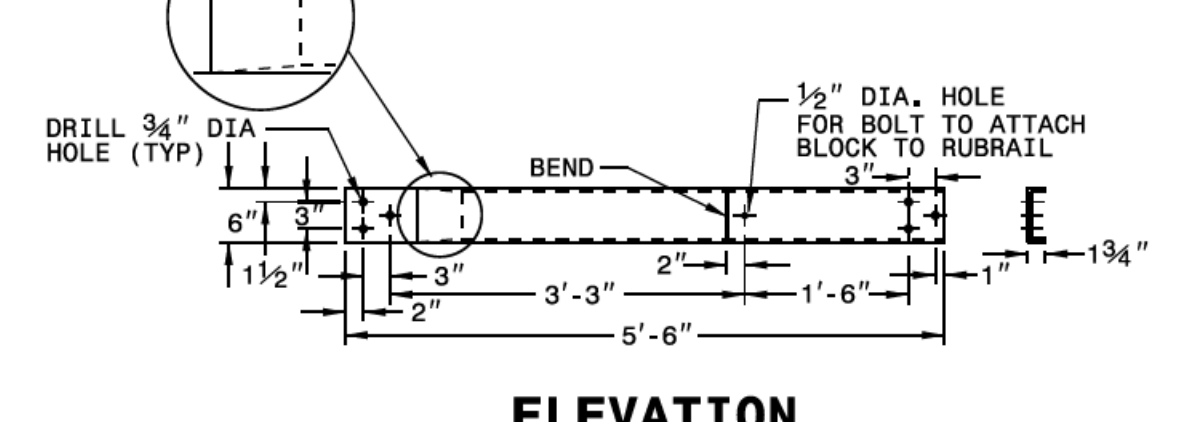


PLAN

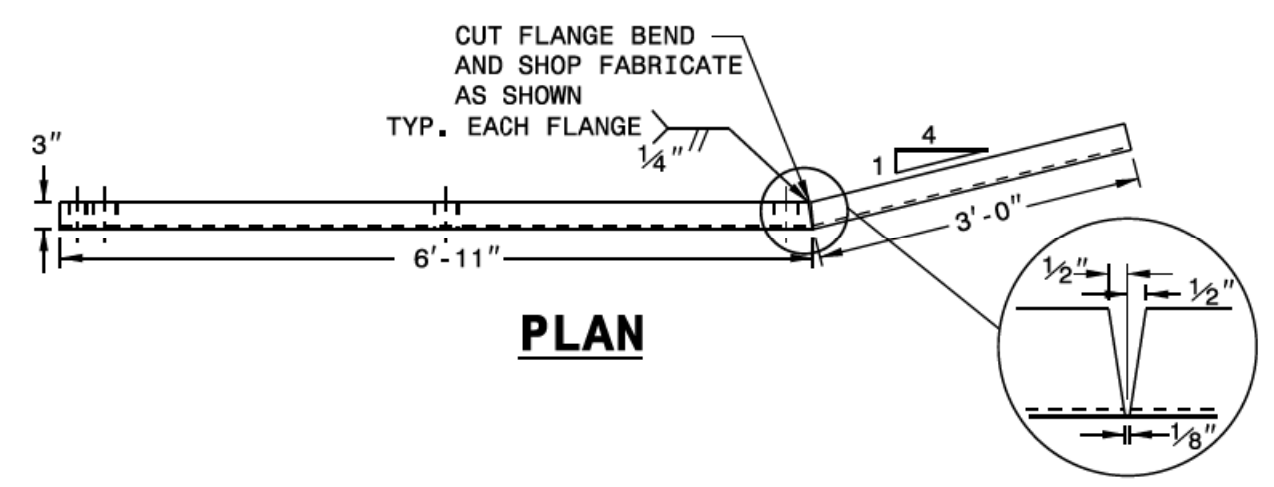
- GENERAL NOTES:**
- POSTS 1 THROUGH 5 REQUIRE AN ADDITIONAL HOLE TO ATTACH LOWER BLOCKOUTS AND/OR RUBRAIL.
 - RUBRAIL BLOCKOUTS LOCATED ON POSTS 1 THROUGH 4 ARE OFFSET DRILLED AND SECURED WITH 5/8" BUTT HEAD BOLTS (SEE CHART FOR BOLT LENGTHS). SECURE BLOCKS ONLY TO POSTS 2 AND 4. SECURE RUBRAIL AND BLOCKOUTS TO POSTS 1 AND 3. RUBRAIL IS SECURED TO POST 5 WITH A 5/8" x 4 1/2" BUTT HEAD BOLT. RUBRAIL IS FLARED TO BACK OF POST 6 AND NOT SECURED.
 - STEEL SPACER TUBE IS A SCHEDULE 40 GALVANIZED PIPE 6" INSIDE DIAMETER x 9" LONG. ATTACH TUBE TO GUARDRAIL ONLY WITH 5/8" x 1 1/4" LONG BUTT HEAD BOLT AND RECTANGULAR PLATE WASHER.
 - SEE DETAIL D FOR SLOPED RUBRAIL BLOCKOUT. BLOCKOUT IS ATTACHED TO RAIL ELEMENT ONLY. USE 3/8" x 3" LAG BOLT WITH FLAT WASHER.
 - SHOP FABRICATE THE C6 x 8.2 RUBRAIL END TO BE CONSISTENT WITH THE SLOPE OF THE JERSEY SHAPE AND ATTACH FLUSH WITH THE SLOPED TOE OF THE BARRIER OR BRIDGE RAIL.
 - ANCHORAGE:
 - AT PORTABLE CONCRETE BARRIER, ANCHOR RUBRAIL USING THREE 5/8" x 6" CHEMICALLY ANCHORED BOLTS WITH WASHERS.
 - AT PORTABLE CONCRETE BARRIER, ANCHOR THE W-BEAM END SHOE USING A 4 BOLT HOLD-DOWN PLATE AS SHOWN. INSTALL THE W-BEAM END SHOE BEHIND THE NESTED W-BEAM ELEMENTS.
 - POSTS 1 AND 2 ARE W8 x 13, 7'-6" LONG. ALL OTHER POSTS IN THE ANCHOR UNIT ARE W6 x 8.5.



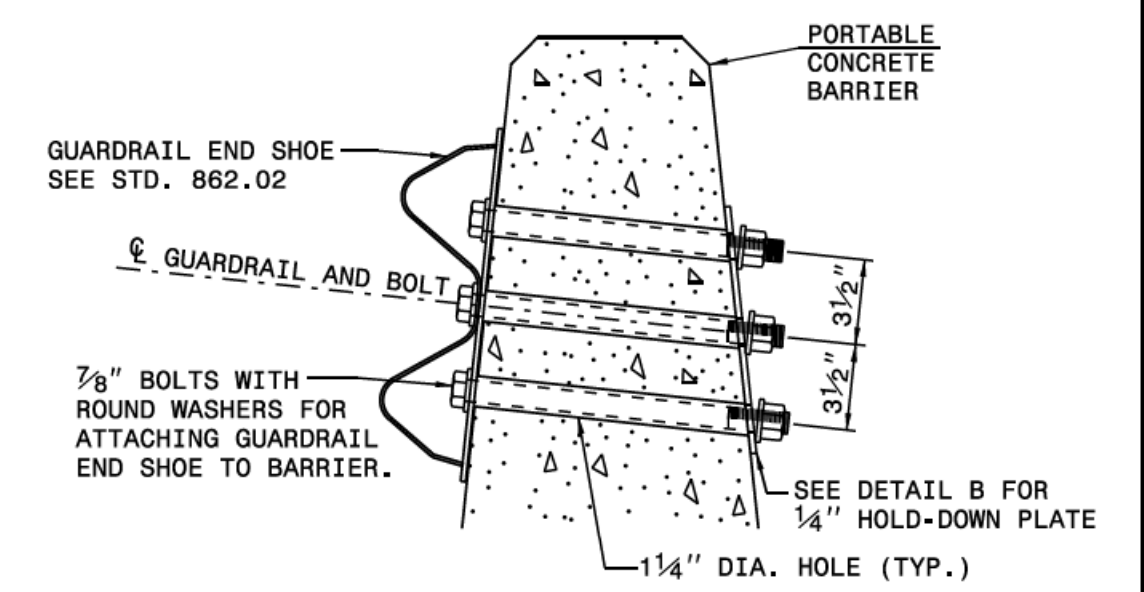
DETAIL A
C6 x 8.2 RUBRAIL



DETAIL B
BENT PLATE RUBRAIL

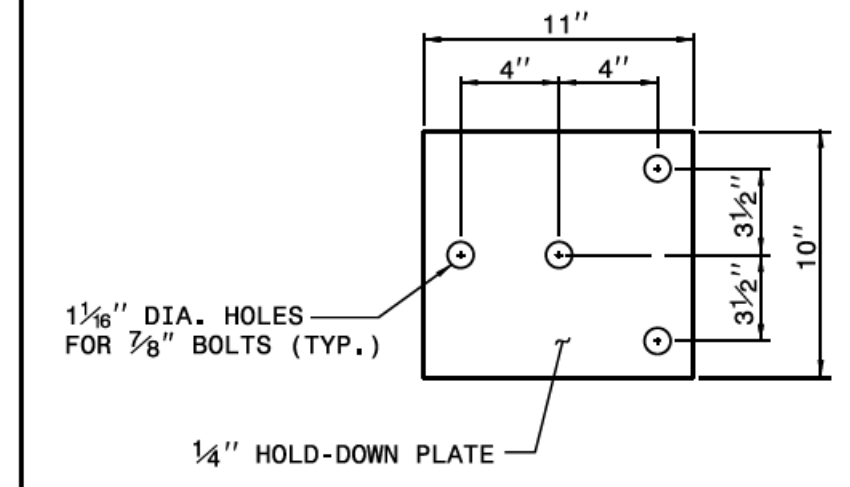


DETAIL E
LAG BOLT

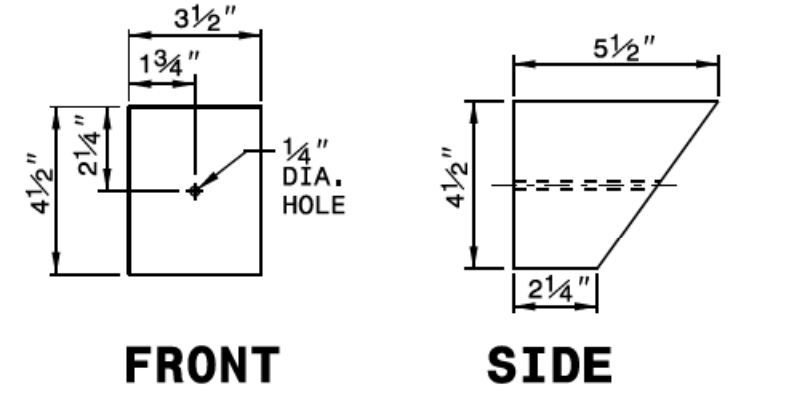


PART SECTION
OF BARRIER OR RAIL
THRU END SHOE SECTION AND
4 BOLT HOLD DOWN PLATE

- NOTES FOR 4 BOLT HOLD DOWN PLATE**
- THE GUARDRAIL ANCHOR ASSEMBLY SHALL CONSIST OF A 1/4" HOLD DOWN PLATE AND 4 - 7/8" DIA. BOLTS WITH NUTS AND WASHERS.
 - THE HOLD-DOWN PLATE SHALL CONFORM TO AASHTO M270 GRADE 36. AFTER FABRICATION, THE HOLD-DOWN PLATE SHALL BE HOT-DIP GALVANIZED IN ACCORDANCE WITH AASHTO M111.
 - AFTER INSTALLATION, THE EXPOSED THREAD OF THE BOLT SHALL BE BURRED WITH A SHARP POINTED TOOL. THE 1 1/4" DIA. HOLES SHALL BE FORMED OR DRILLED WITH A CORE BIT. IMPACT TOOLS WILL NOT BE PERMITTED. ANY CONCRETE DAMAGED BY THIS WORK SHALL BE REPAIRED TO THE SATISFACTION OF THE ENGINEER.



4 BOLT HOLD DOWN PLATE

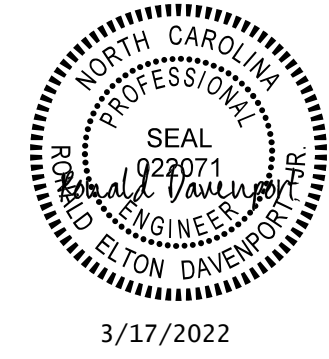


DETAIL D
SLOPED RUBRAIL BLOCKOUT

CONTRACT STANDARDS
AND DEVELOPMENT UNIT
Office 919-707-6950 FAX 919-250-4119

TEMPORARY GUARDRAIL
ANCHOR UNIT TYPE B-77

ORIGINAL BY: E.E. WARD DATE: 04-07-04
 MODIFIED BY: J.S. Howerton DATE: 10-02-18
 CHECKED BY: _____ DATE: _____
 FILE SPEC: _____



DOCUMENT NOT CONSIDERED FINAL
UNLESS ALL SIGNATURES COMPLETED

PLOT DRIVER: NCDOT_color_eng-50.pit
 USER: CHAFNDEN
 FILE: p:\pwhdr\users\01\HDR\US_East_01\Documents\3322\10030389\6.0_CAD_BIM\6.2_Work_In_Progress\B-3186-B-5898_TrafficControl\CP\B3186-B5898-TMP_TMP02E\new1.dgn
 PENTABLE: NCDOT_tcp.tbl
 DATE: 3/17/2022
 TIME: 12:36:28 PM
 REVISIONS