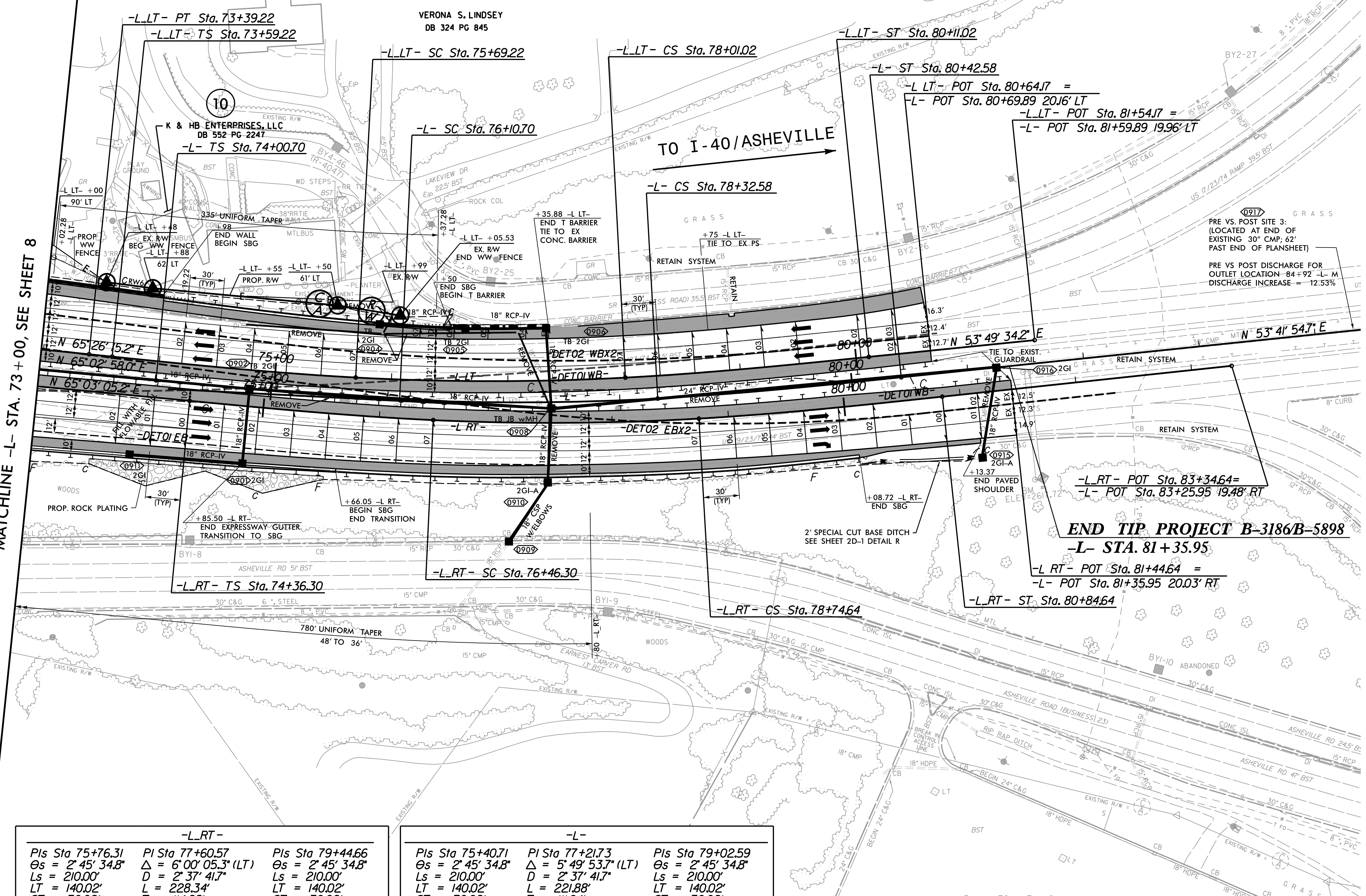


PROJECT REFERENCE NO. <b>B-3186 / B-5898</b>		SHEET NO. <b>9</b>	
RW SHEET NO.			
ROADWAY DESIGN ENGINEER		HYDRAULICS ENGINEER	
DOCUMENT NOT CONSIDERED FINAL UNLESS ALL SIGNATURES COMPLETED			
HDR Engineering, Inc. of the Carolinas 555 Fayetteville St. Suite 900 Raleigh, N.C. 27601 N.C.B.E.L.S. License Number: F-0116			

**-L-LT-**

PI Sta 71+70.95 Δ = 1° 59' 02.2" (RT) D = 0° 35' 22.1" L = 336.57' T = 168.30' R = 9,720.00'	PI Sta 74+99.24 Θs = 2° 45' 34.8" Ls = 210.00' LT = 140.02' ST = 70.02'	PI Sta 76+85.23 Δ = 6° 05' 31.5" (LT) D = 2° 37' 41.7" L = 231.79' T = 116.01' R = 2,180.00'	PI Sta 78+71.03 Θs = 2° 45' 34.8" Ls = 210.00' LT = 140.02' ST = 70.02'
---	---	---	---

MATCHLINE -L- STA. 73+00, SEE SHEET 8



**-L-RT-**

PI Sta 75+76.31 Θs = 2° 45' 34.8" Ls = 210.00' LT = 140.02' ST = 70.02'	PI Sta 77+60.57 Δ = 6° 00' 05.3" (LT) D = 2° 37' 41.7" L = 228.34' T = 114.28' R = 2,180.00'	PI Sta 79+44.66 Θs = 2° 45' 34.8" Ls = 210.00' LT = 140.02' ST = 70.02'
---	---	---

**-L-**

PI Sta 75+40.71 Θs = 2° 45' 34.8" Ls = 210.00' LT = 140.02' ST = 70.02'	PI Sta 77+21.73 Δ = 5° 49' 53.7" (LT) D = 2° 37' 41.7" L = 221.88' T = 111.04' R = 2,180.00' SE = 0.07 DS = 65mph	PI Sta 79+02.59 Θs = 2° 45' 34.8" Ls = 210.00' LT = 140.02' ST = 70.02'
---	--	---

VP WAYNESVILLE, LLC  
DB 810 PG 1554

SEE SHEET 2D-1 FOR DRAINAGE DITCH DETAILS  
 FOR -L-LT- PROFILE, SEE PROFILE SHEET 15 & 16  
 FOR -L-RT- PROFILE, SEE PROFILE SHEET 16

PLOT DRIVER: NCDOT\_color\_eng\_50.plt  
 USER: HBARE  
 FILE: NCDOT\NCDOT-B3186\_T02.c. \6.0.CAD.BITM.6.2.Work.In.Progress\B-3186-B-5898\Roadway\Pro\B3186-B5898.RDY\_PSH09.dgn  
 PENTABLE: NCDOT\_pshp.plt.tdi  
 TIME: 2:03:05 PM  
 DATE: 3/16/2022