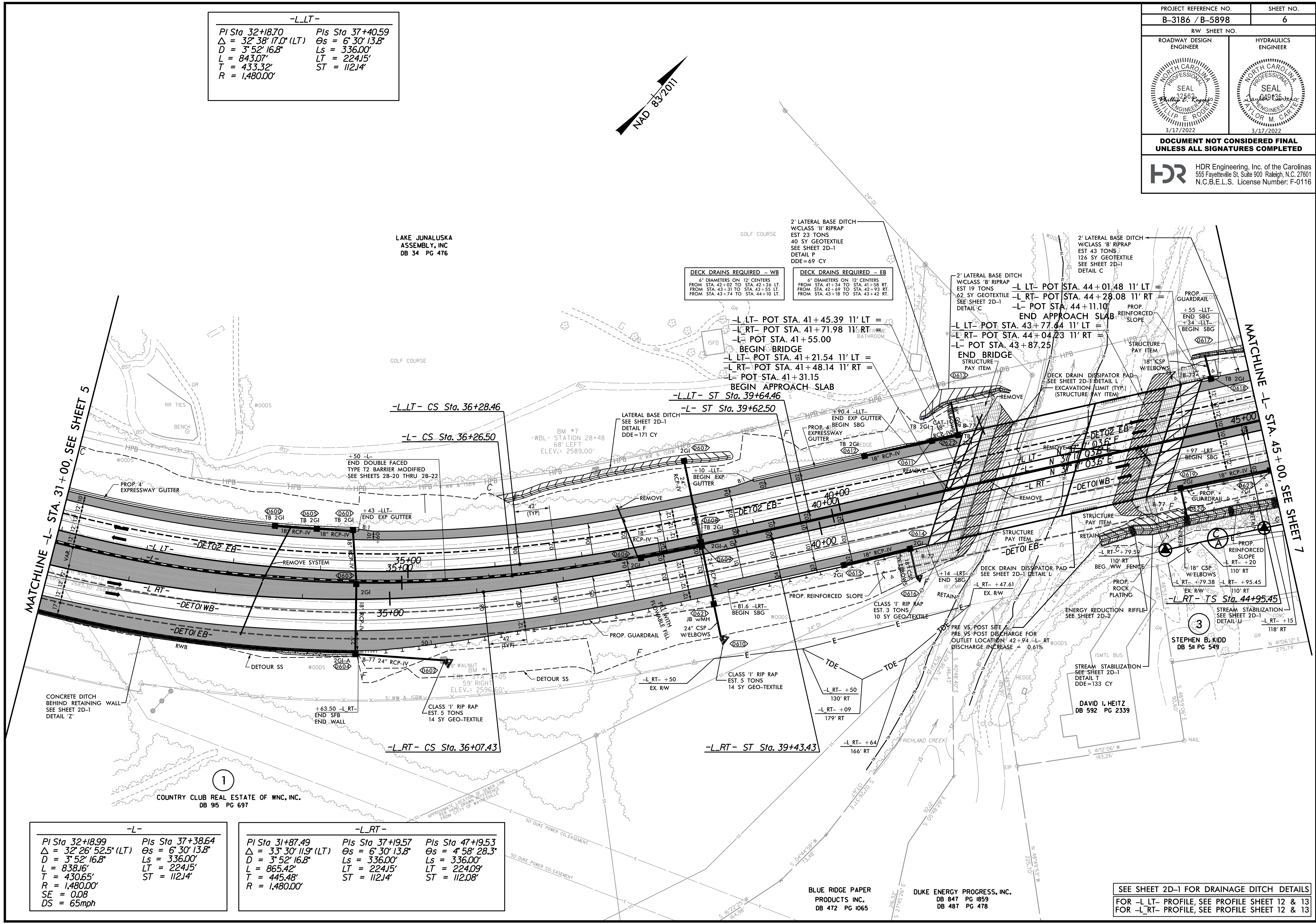
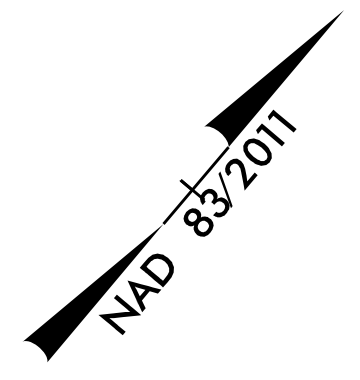


PROJECT REFERENCE NO. B-3186 / B-5898		SHEET NO. 6	
RW SHEET NO.			
ROADWAY DESIGN ENGINEER		HYDRAULICS ENGINEER	
DOCUMENT NOT CONSIDERED FINAL UNLESS ALL SIGNATURES COMPLETED			
HDR Engineering, Inc. of the Carolinas 555 Fayetteville St. Suite 900 Raleigh, N.C. 27601 N.C.B.E.L.S. License Number: F-0116			

-L-LT-

PI Sta 32+18.70	PIs Sta 37+40.59
$\Delta = 32^{\circ} 38' 17.0''$ (LT)	$\Theta_s = 6^{\circ} 30' 13.8''$
$D = 3^{\circ} 52' 16.8''$	$L_s = 336.00'$
$L = 843.07'$	$LT = 224.15'$
$T = 433.32'$	$ST = 112.14'$
$R = 1,480.00'$	



LAKE JUNALUSKA
ASSEMBLY, INC
DB 34 PG 476

-L-LT- CS Sta. 36+28.46

-L- CS Sta. 36+26.50

-L-RT- CS Sta. 36+07.43

-L-LT- ST Sta. 39+64.46

-L- ST Sta. 39+62.50

-L-RT- ST Sta. 39+43.43

-L-LT- POT STA. 44+01.48 11' LT =

-L-RT- POT STA. 44+28.08 11' RT =

-L- POT STA. 44+11.10

-L-LT- POT STA. 43+77.44 11' LT =

-L-RT- POT STA. 44+04.23 11' RT =

-L- POT STA. 43+87.25

-L-RT- TS Sta. 44+95.45

-L-

PI Sta 32+18.99	PIs Sta 37+38.64
$\Delta = 32^{\circ} 26' 52.5''$ (LT)	$\Theta_s = 6^{\circ} 30' 13.8''$
$D = 3^{\circ} 52' 16.8''$	$L_s = 336.00'$
$L = 838.16'$	$LT = 224.15'$
$T = 430.65'$	$ST = 112.14'$
$R = 1,480.00'$	
$SE = 0.08$	
$DS = 65\text{mph}$	

-L-RT-

PI Sta 31+87.49	PIs Sta 37+19.57	PIs Sta 47+19.53
$\Delta = 33^{\circ} 30' 11.9''$ (LT)	$\Theta_s = 6^{\circ} 30' 13.8''$	$\Theta_s = 4^{\circ} 58' 28.3''$
$D = 3^{\circ} 52' 16.8''$	$L_s = 336.00'$	$L_s = 336.00'$
$L = 865.42'$	$LT = 224.15'$	$LT = 224.09'$
$T = 445.48'$	$ST = 112.14'$	$ST = 112.08'$
$R = 1,480.00'$		

SEE SHEET 2D-1 FOR DRAINAGE DITCH DETAILS
FOR -L-LT- PROFILE, SEE PROFILE SHEET 12 & 13
FOR -L-RT- PROFILE, SEE PROFILE SHEET 12 & 13

PLOT DRIVER: NCDOT_color_eng_50.plt
 USER: HBARE
 FILE: NCDOT\NCDOT-B3186_T02.c. \6.0.CAD.BTM.6.2_Work_In_Progress\B-3186-B-5898_Roadway\pco\B3186-B5898-RDY_PSH06.dgn
 PENTABLE: NCDOT_pshp.plt
 DATE: 3/16/2022
 TIME: 15:21:19 PM