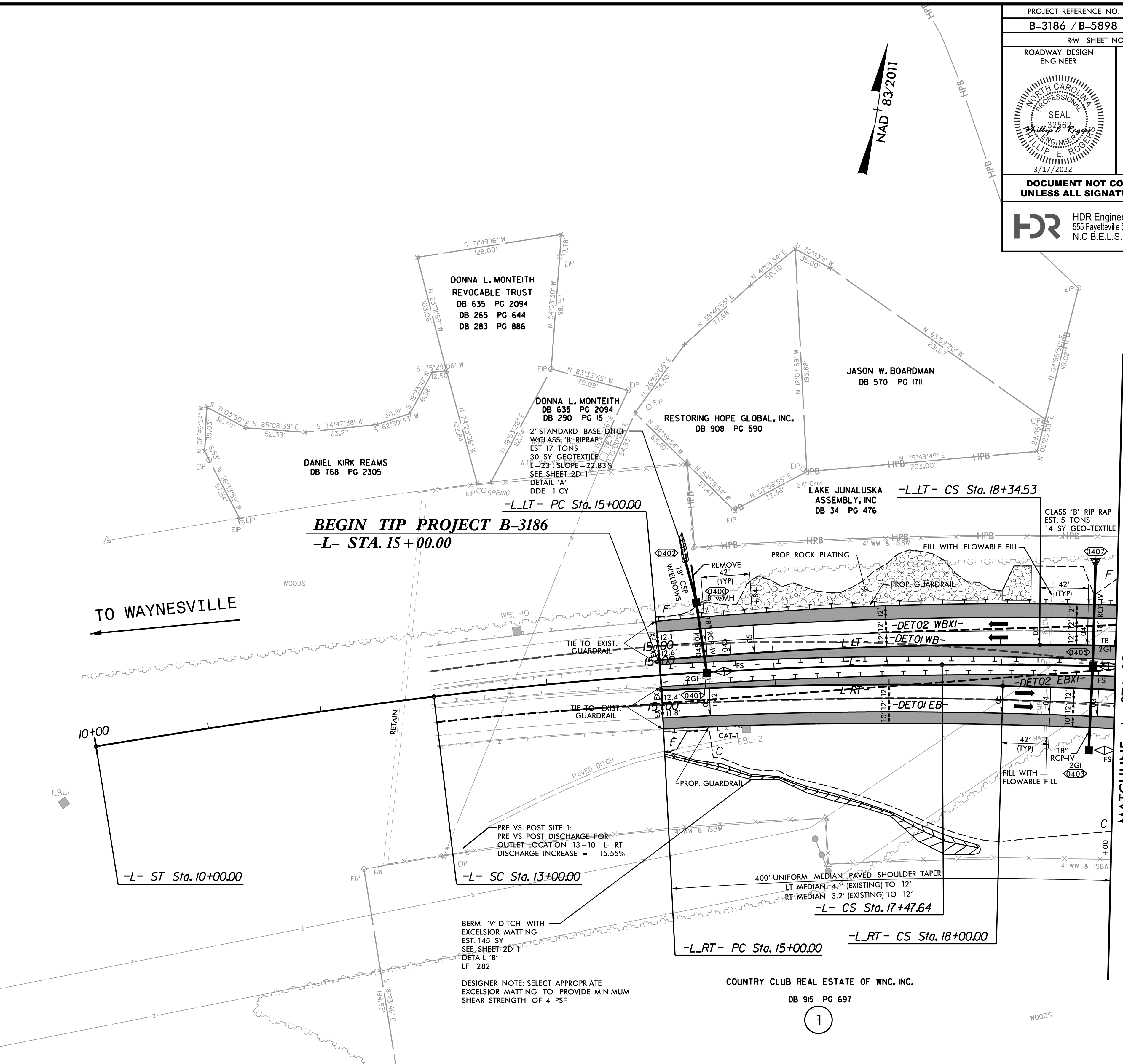


PROJECT REFERENCE NO. B-3186 / B-5898		SHEET NO. 4
RW SHEET NO.		
ROADWAY DESIGN ENGINEER	HYDRAULICS ENGINEER	
DOCUMENT NOT CONSIDERED FINAL UNLESS ALL SIGNATURES COMPLETED		
HDR Engineering, Inc. of the Carolinas 555 Fayetteville St. Suite 900 Raleigh, N.C. 27601 N.C.B.E.L.S. License Number: F-0116		



BM #5
 -WBL- STA 5+00
 S 76°10'26.7\"/>

-L-LT-	
PI Sta 16+67.39	PIs Sta 19+04.53
$\Delta = 5' 23' 57.0\"$ (RT)	$\Theta s = 1' 41' 40.8\"$
$D = 1' 36' 50.3\"$	$Ls = 210.00'$
$L = 334.53'$	$LT = 140.01'$
$T = 167.39'$	$ST = 70.01'$
$R = 3,550.00'$	

-L-RT-	
PI Sta 16+50.07	PIs Sta 18+70.00
$\Delta = 4' 20' 45.9\"$ (RT)	$\Theta s = 1' 31' 16.1\"$
$D = 1' 26' 55.3\"$	$Ls = 210.00'$
$L = 300.00'$	$LT = 140.01'$
$T = 150.07'$	$ST = 70.00'$
$R = 3,955.00'$	

-L-		
PIs Sta 12+00.02	PI Sta 15+24.06	PIs Sta 18+47.65
$\Theta s = 2' 12' 13.3\"$	$\Delta = 6' 34' 34.8\"$ (RT)	$\Theta s = 2' 12' 13.3\"$
$Ls = 300.00'$	$D = 1' 28' 08.8\"$	$Ls = 300.00'$
$LT = 200.02'$	$L = 447.64'$	$LT = 200.02'$
$ST = 100.01'$	$T = 224.06'$	$ST = 100.01'$
	$R = 3,900.00'$	
	$SE = 0.05$	
	$DS = 65mph$	

SEE SHEET 2D-1 FOR DRAINAGE DITCH DETAILS
 FOR -L-LT- PROFILE, SEE PROFILE SHEET 11 & 12
 FOR -L-RT- PROFILE, SEE PROFILE SHEET 11

PLOT DRIVER: NCDOT_color_eng_50.plt
 USER: HBARE
 FILE: NCDOT\NCDOT-B3186-T02.c. \6.0.CAD.BTM\6.2.Work.In.Prog\B3186-B-5898\Roadway\Pro\B3186-B-5898.RDY_PSH04.dgn
 PENTABLE: NCDOT_pshp.plt.tdi
 DATE: 3/16/2022
 TIME: 1:44:34 PM

MATCHLINE -L- STA. 19+00, SEE SHEET 5