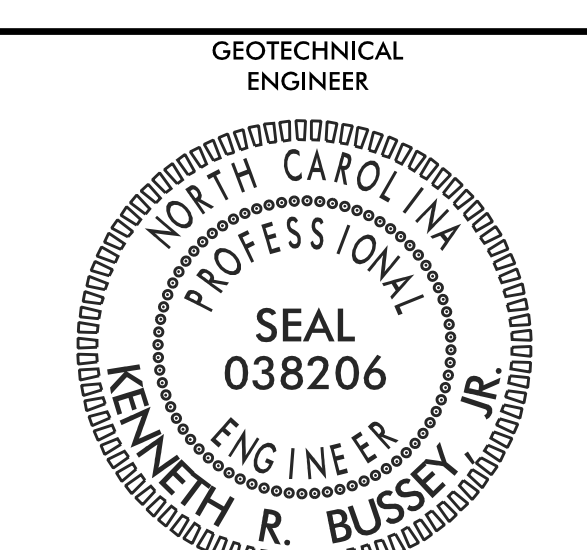



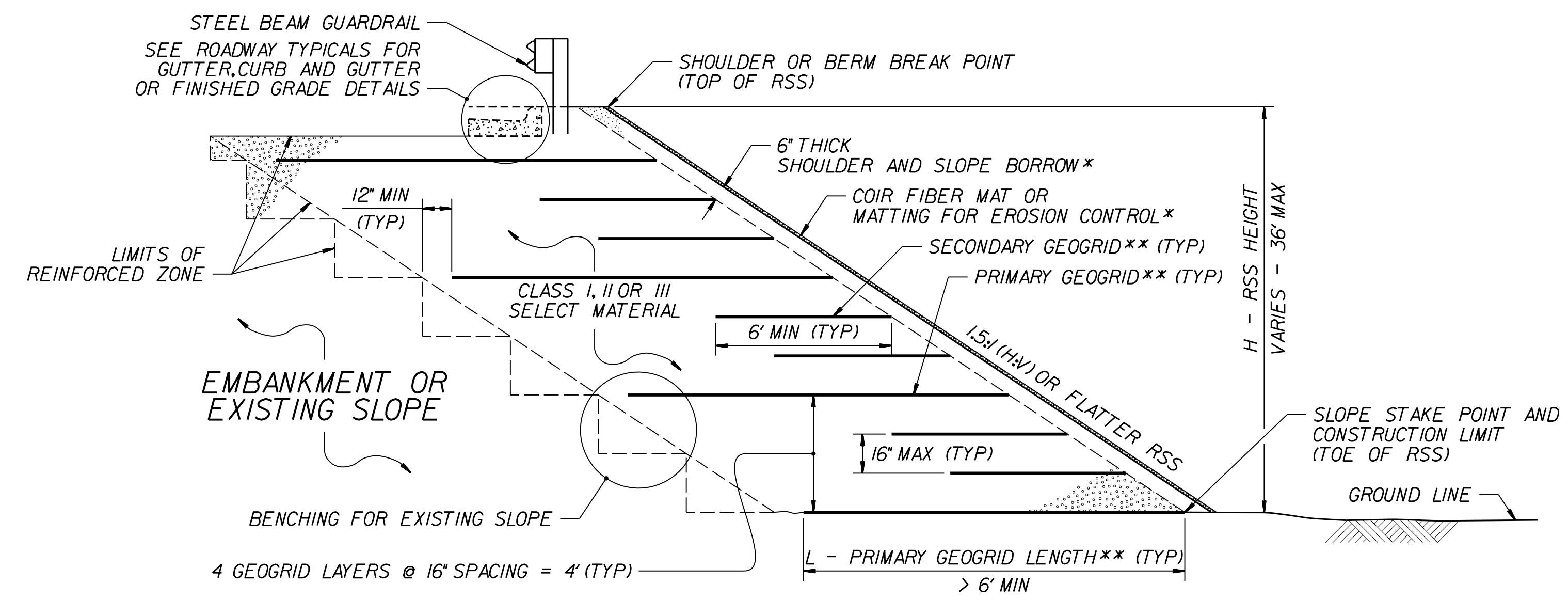
PROJECT REFERENCE NO.	SHEET NO.
B-3186 / B-5898	2G-1

GEOTECHNICAL ENGINEER

 SEAL 038206
 KENNETH R. BUSSEY, JR.
 ENGINEER

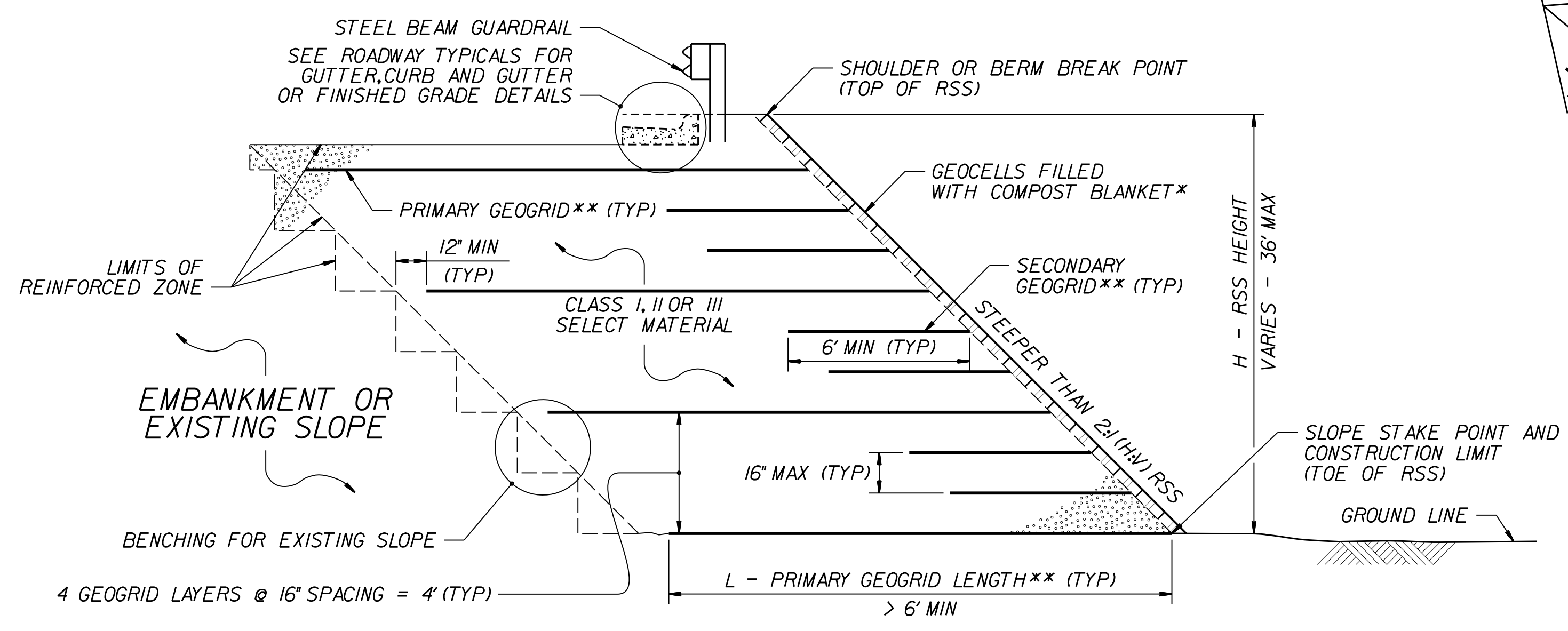
Kenneth R. Bussey, Jr. 3/17/2022
 SIGNATURE DATE

**DOCUMENT NOT CONSIDERED FINAL
UNLESS ALL SIGNATURES COMPLETED**


 HDR Engineering, Inc. of the Carolinas
 555 Fayetteville St., Suite 900, Raleigh, N.C. 27601
 N.C.B.E.L.S. License Number: F-0116

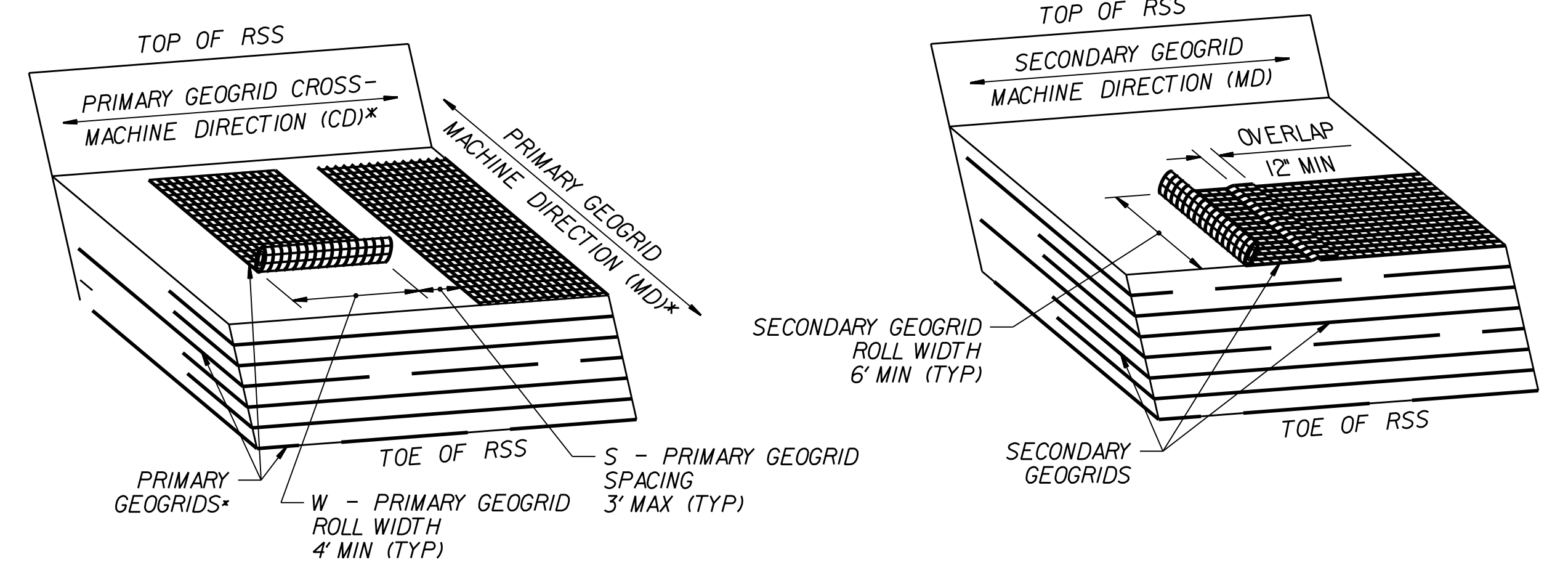


MATTING WITH SHOULDER AND SLOPE BORROW
 *SEE NOTES 3 AND 10 ON SHEET 2.



GEOCELLS WITH COMPOST BLANKET
 *SEE NOTES 3 AND 10 ON SHEET 2.

STANDARD REINFORCED SOIL SLOPE (RSS)
 **SEE TABLES ON SHEET 2 AND GEOGRID PLACEMENT DETAILS.
 IF RSS ANGLE IS 2:1 (H:V) OR FLATTER, REPLACE PRIMARY GEOGRID WITH SECONDARY GEOGRID PLACED AS SHOWN IN THE GEOGRID PLACEMENT DETAILS.



GEOGRID PLACEMENT DETAILS
 (% COVERAGE = $\frac{W}{W+S} \times 100 \geq 75\%$)
 *SEE NOTE 8 ON SHEET 2. DO NOT OVERLAP PRIMARY GEOGRIDS IN ANY DIRECTION.

PLOT DRIVER: NCDOT_color_eng_50.plt
 USER: HBARE
 FILE: NCDOT\NCDOT-B3186_T02.c. \6.0.CAD.BITM\6.2.Work.In.Progress\B-3186-B-5898\Geotech\InvestigationDesign\B3186-B-5898\B-3186-B-5898\Sub\B3186-B5898.GEO.RWAL\CADD.GEOTECH\Site&Sub\B3186-B5898.GEO.RWAL_DETAILED\NOTES\3G-13.dgn
 PENTABLE: NCDOT_pshp.plt.tdi
 TIME: 9:14:52 AM
 DATE: 2/9/2022
 REVISIONS