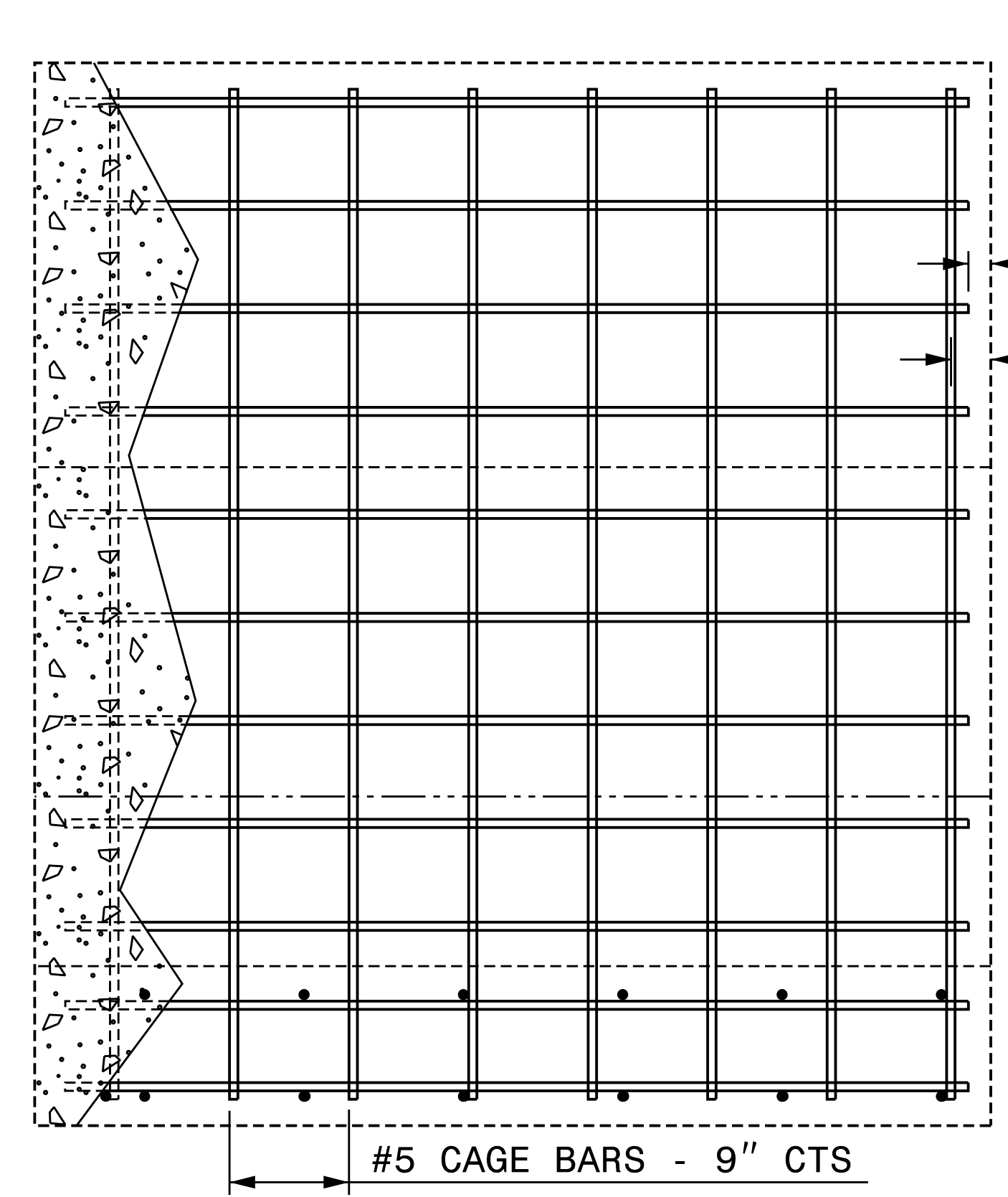


PROJECT REFERENCE NO. B-3186 / B-5898		SHEET NO. 2B-22
RW SHEET NO.		
ROADWAY DESIGN ENGINEER	STRUCTURES ENGINEER	
DOCUMENT NOT CONSIDERED FINAL UNLESS ALL SIGNATURES COMPLETED		
HDR Engineering, Inc. of the Carolinas 555 Fayetteville St. Suite 900 Raleigh, N.C. 27601 N.C.B.E.L.S. License Number: F-0116		

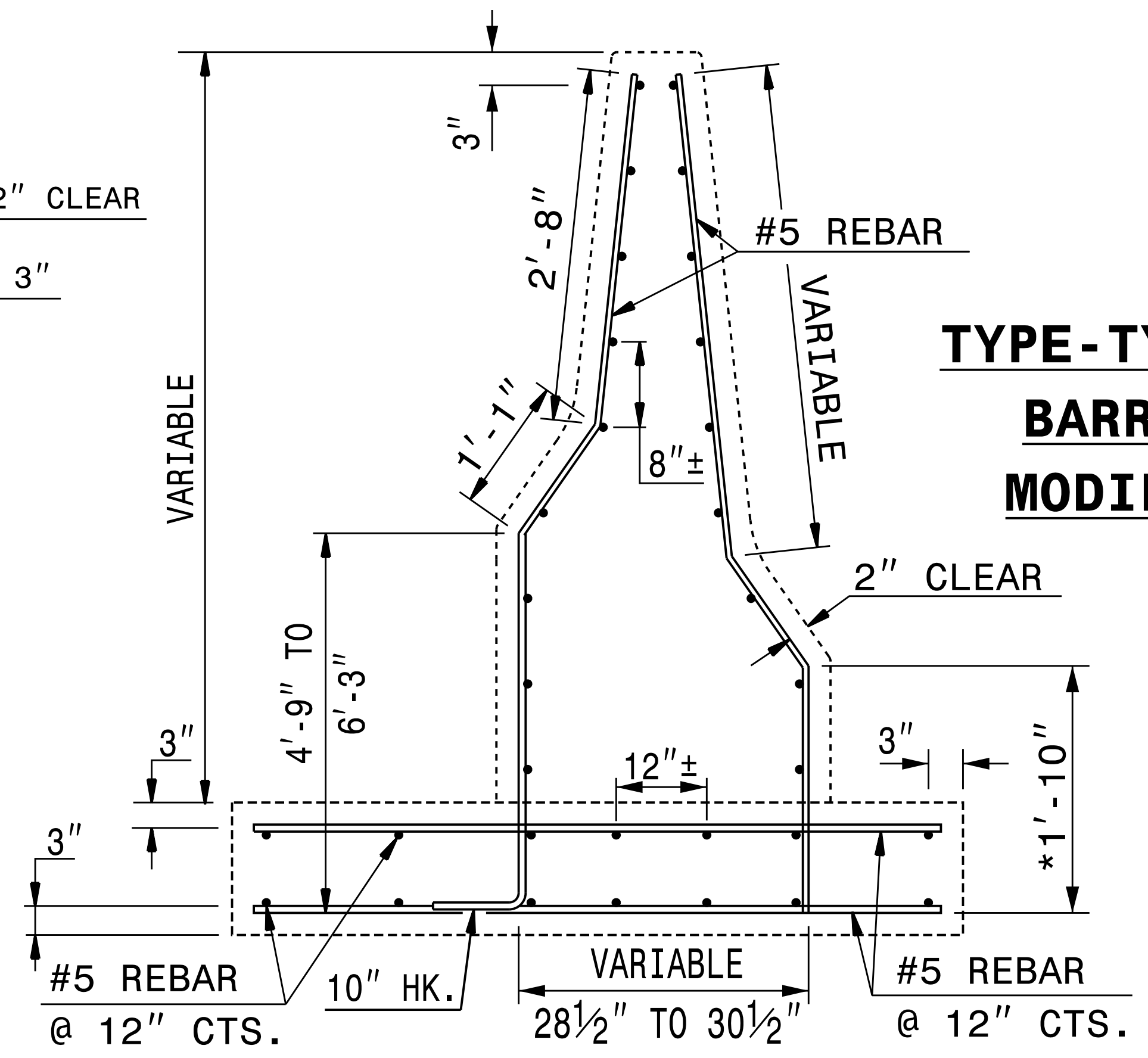
STATE OF
NORTH CAROLINA
DEPT. OF TRANSPORTATION
DIVISION OF HIGHWAYS
RALEIGH, N.C.

ROADWAY STANDARD DRAWING FOR
DOUBLE FACED CONCRETE BARRIER
TYPE T2 BARRIER MODIFIED

SHEET 3 OF 3
854.02



ELEVATION VIEW



SECTION VIEW

- NOTES:**
1. EVENLY SPACE HORIZONTAL REBAR 8"±1" UNLESS OTHERWISE NOTED.
 2. USE #5 BAR FOR HORIZONTAL STEEL AND #5 BAR FOR THE VERTICAL CAGE.
 3. SUBMIT CHANGES IN STEEL PLACEMENT OR SIZE TO THE ENGINEER.
 4. USE SPLICE LENGTHS EQUAL TO 20 TIMES THE DIAMETER OF THE BAR.
- * REFER TO PLAN TYPICAL SECTIONS AND PAVEMENT SCHEDULE TO DETERMINE KEY-IN DEPTH. DIMENSIONS SHOWN ARE BASED ON A MIN. KEY-IN DEPTH.
- STEEL PLACEMENT FOR CAST-IN-PLACE OR SLIP-FORM CONCRETE BARRIER**

STATE OF
NORTH CAROLINA
DEPT. OF TRANSPORTATION
DIVISION OF HIGHWAYS
RALEIGH, N.C.

ROADWAY STANDARD DRAWING FOR
DOUBLE FACED CONCRETE BARRIER
TYPE T2 BARRIER MODIFIED

SHEET 3 OF 3
854.02

PLOT DRIVER: NCDOT_pdf_color_eng_50.plt
 USER: HBARE
 FILE: NCDOT\NCDOT-B3186-T02.c. \6.0.CAD.BIM\6.2.Work.In.Progress\B-3186-B-5898\Roadway\Proj\B3186-B5898-RDY_PSH02B-22.dgn
 PENTABLE: NCDOT_pshpfl.tbl
 DATE: 2/9/2022
 TIME: 8:43:52 AM