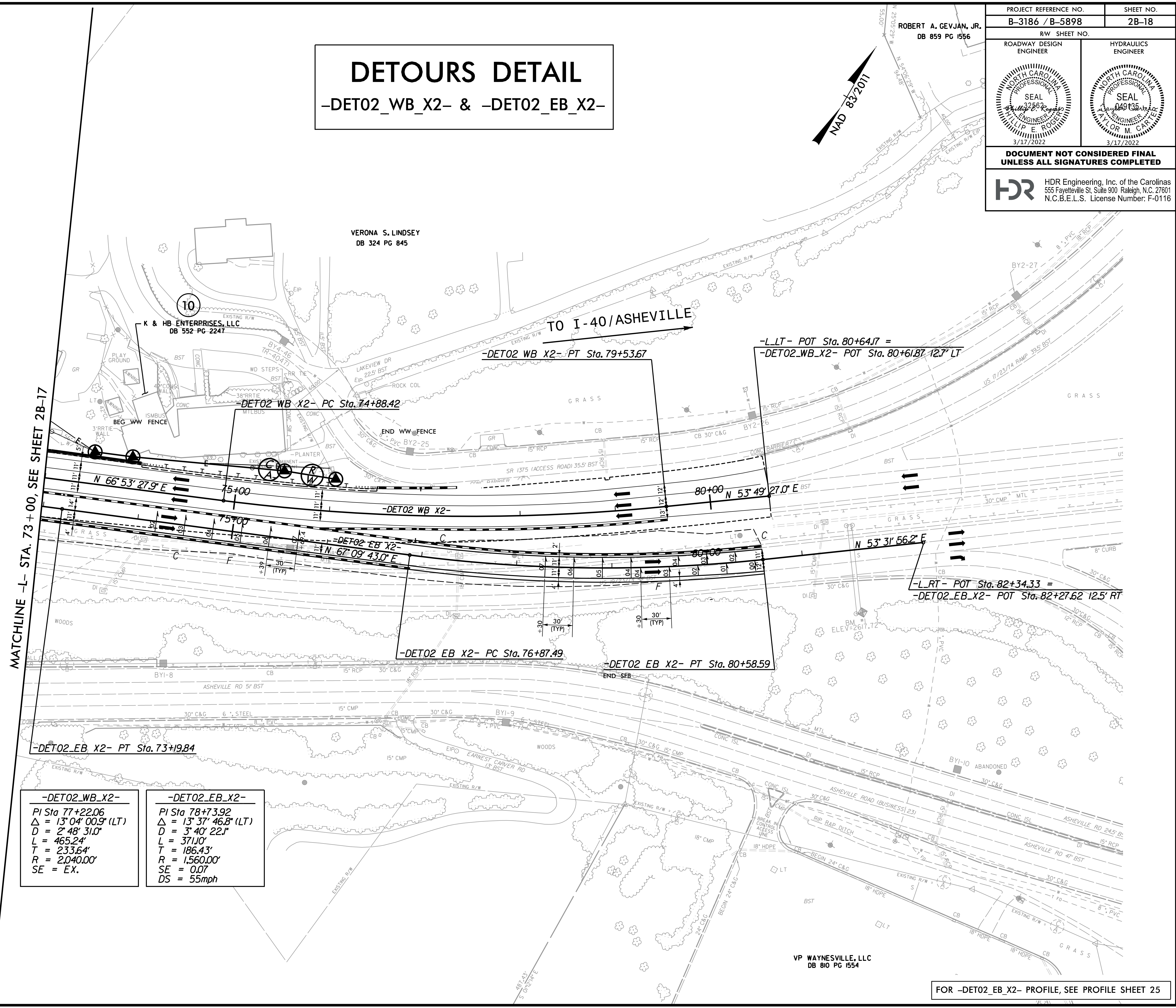


# DETOURS DETAIL

-DET02\_WB\_X2- & -DET02\_EB\_X2-

PROJECT REFERENCE NO. <b>B-3186 / B-5898</b>		SHEET NO. <b>2B-18</b>	
RW SHEET NO.			
ROADWAY DESIGN ENGINEER		HYDRAULICS ENGINEER	
<b>DOCUMENT NOT CONSIDERED FINAL UNLESS ALL SIGNATURES COMPLETED</b>			
HDR Engineering, Inc. of the Carolinas 555 Fayetteville St. Suite 900 Raleigh, N.C. 27601 N.C.B.E.L.S. License Number: F-0116			



**-DET02\_WB\_X2-**  
 PI Sta 77+22.06  
 $\Delta = 13^{\circ} 04' 00.9''$  (LT)  
 D = 2' 48' 31.0"  
 L = 465.24'  
 T = 233.64'  
 R = 2,040.00'  
 SE = EX.

**-DET02\_EB\_X2-**  
 PI Sta 78+73.92  
 $\Delta = 13^{\circ} 37' 46.8''$  (LT)  
 D = 3' 40' 22.1"  
 L = 371.0'  
 T = 186.43'  
 R = 1,560.00'  
 SE = 0.07  
 DS = 55mph

VP WAYNESVILLE, LLC  
DB 810 PG 1554

FOR -DET02\_EB\_X2- PROFILE, SEE PROFILE SHEET 25

PLOT DRIVER: NCDOT\_color\_eng\_50.plt  
 USER: HBARE  
 FILE: \

PENTABLE: B-3186 B-5898 NCDOT\_pshp.plt  
 TIME: 6:56:45 AM

DATE: 1/13/2022