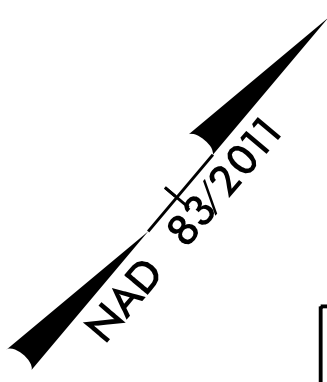
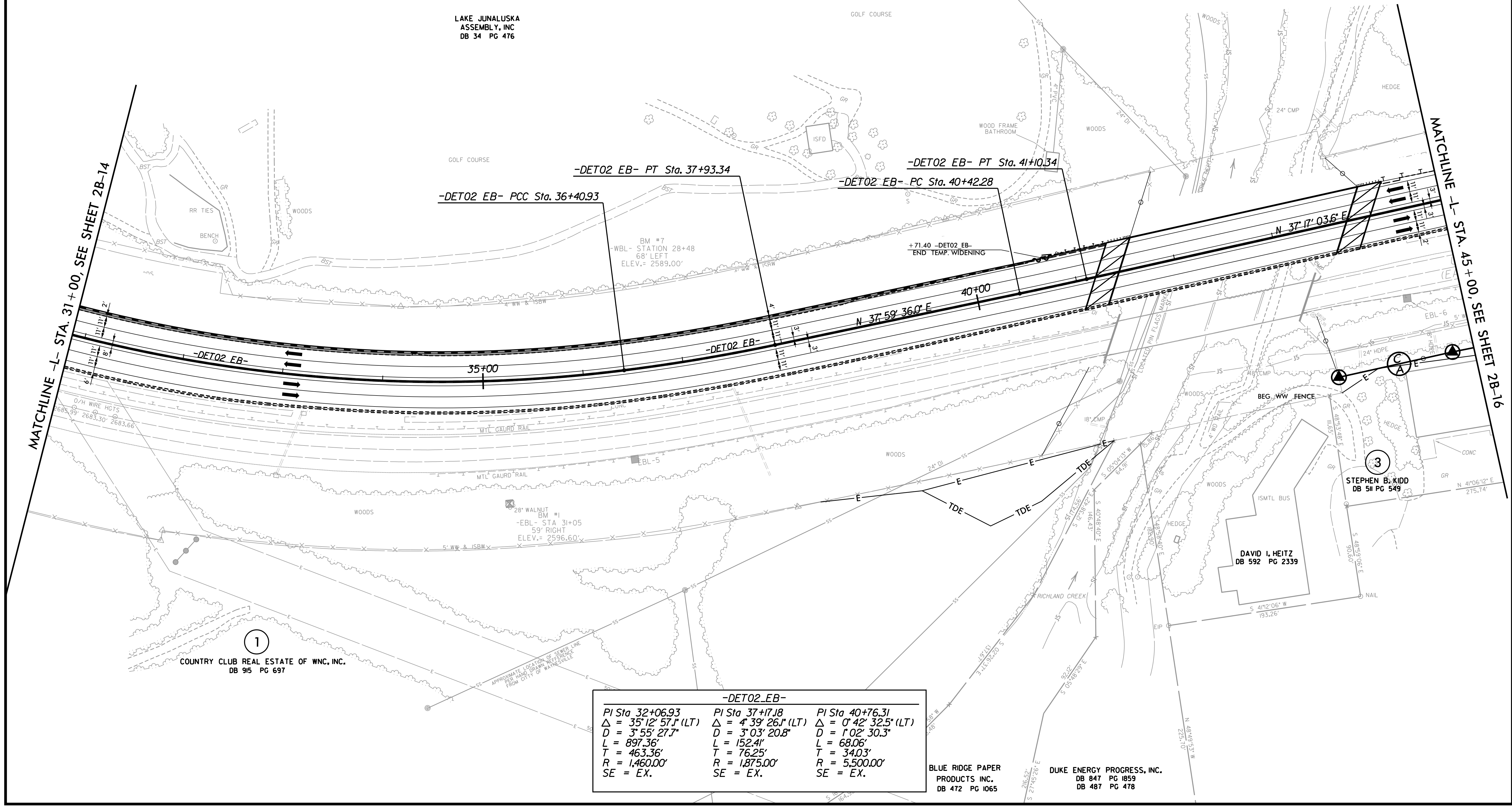


| | | |
|---|------------------------|--------------------|
| PROJECT REFERENCE NO. B-3186 / B-5898 | | SHEET NO. 2B-15 |
| RW SHEET NO. | | |
| ROADWAY DESIGN ENGINEER | HYDRAULICS ENGINEER | |
| | | |
| DOCUMENT NOT CONSIDERED FINAL UNLESS ALL SIGNATURES COMPLETED | | |
| HDR Engineering, Inc. of the Carolinas 555 Fayetteville St. Suite 900 Raleigh, N.C. 27601 N.C.B.E.L.S. License Number: F-0116 | | |



DETOURS DETAIL

-DET02_EB-



LAKE JUNALUSKA
ASSEMBLY, INC
DB 34 PG 476

-DET02_EB- PT Sta. 37+93.34

-DET02_EB- PCC Sta. 36+40.93

-DET02_EB- PC Sta. 40+42.28

-DET02_EB- PT Sta. 41+10.34

BM #7
=WBL- STATION 28+48
68' LEFT
ELEV.= 2589.00'

+71.40 -DET02_EB-
END TEMP. WIDENING

| -DET02_EB- | | |
|-------------------------------------|------------------------------------|------------------------------------|
| PI Sta 32+06.93 | PI Sta 37+17.18 | PI Sta 40+76.31 |
| $\Delta = 35^{\circ}12'57.1''$ (LT) | $\Delta = 4^{\circ}39'26.1''$ (LT) | $\Delta = 0^{\circ}42'32.5''$ (LT) |
| $D = 3^{\circ}55'27.7''$ | $D = 3^{\circ}03'20.8''$ | $D = 1^{\circ}02'30.3''$ |
| $L = 897.36'$ | $L = 152.41'$ | $L = 68.06'$ |
| $T = 463.36'$ | $T = 76.25'$ | $T = 34.03'$ |
| $R = 1,460.00'$ | $R = 1,875.00'$ | $R = 5,500.00'$ |
| SE = EX. | SE = EX. | SE = EX. |

BLUE RIDGE PAPER
PRODUCTS INC.
DB 472 PG 1065

DUKE ENERGY PROGRESS, INC.
DB 847 PG 1859
DB 487 PG 478

PENTABLE: B-3186 B-5898 NCDOT_pshpfl.tdi
USER: HBARE
DATE: 1/13/2022
TIME: 6:56:20 AM

PLOT DRIVER: NCDOT_pdf_color_eng_50.pht
USER: HBARE
DATE: 1/13/2022
TIME: 6:56:20 AM

MATCHLINE -L- STA. 31+00, SEE SHEET 2B-14

MATCHLINE -L- STA. 45+00, SEE SHEET 2B-16

1
COUNTRY CLUB REAL ESTATE OF WNC, INC.
DB 95 PG 697

3
STEPHEN B. KIDD
DB 511 PG 549

DAVID I. HEITZ
DB 592 PG 2339