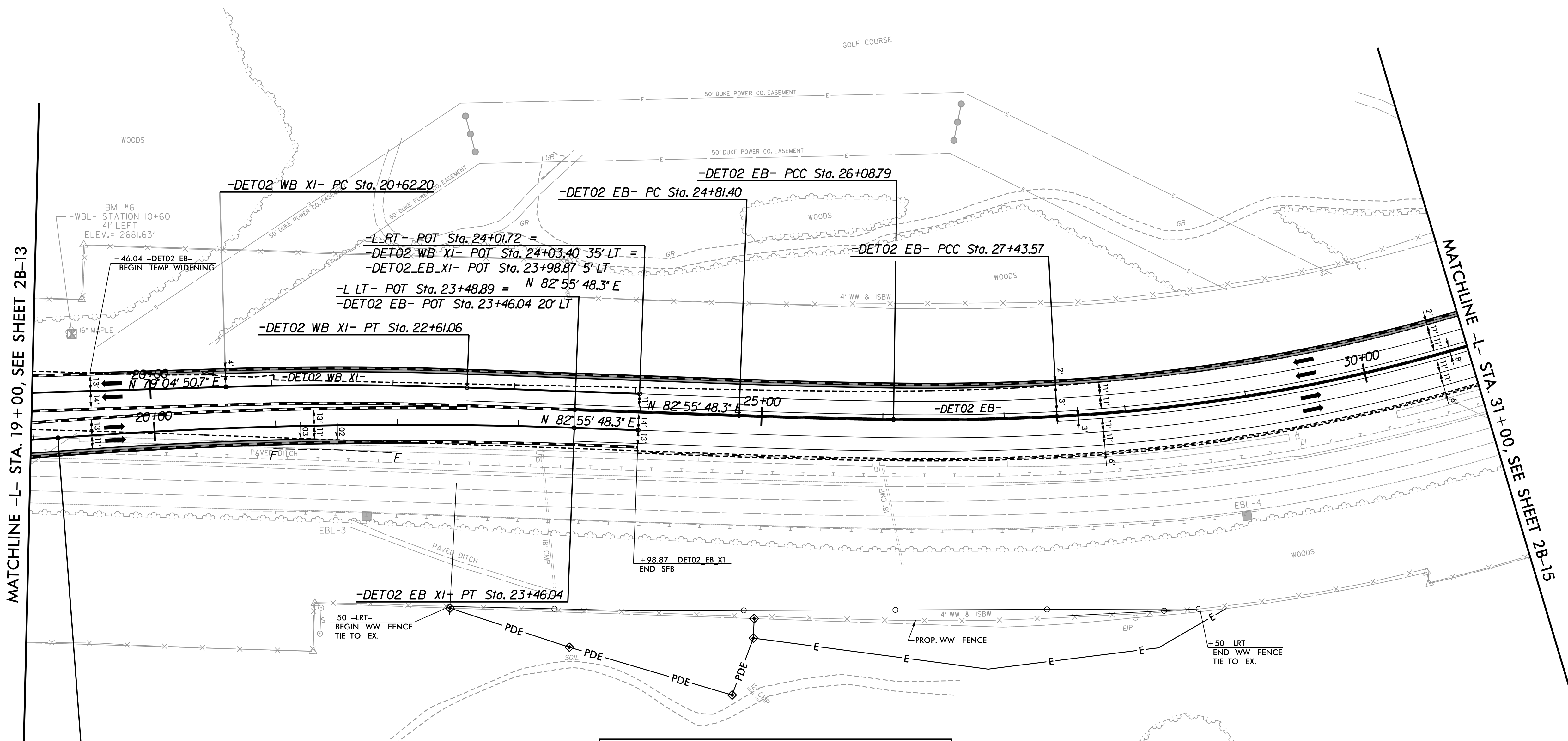


-DET02_EB-		
PI Sta 25+45.0	PI Sta 26+76.21	PI Sta 32+06.93
$\Delta = 1'16"41.9" (LT)$	$\Delta = 3'47"07.2" (LT)$	$\Delta = 3'51'27.7" (LT)$
$D = 1'00'12.3"$	$D = 2'48'31.0"$	$D = 3'55'27.7"$
$L = 127.39'$	$L = 134.78'$	$L = 897.36'$
$T = 63.70'$	$T = 67.41'$	$T = 463.36'$
$R = 5,710.00'$	$R = 2,040.00'$	$R = 1,460.00'$
SE = EX.	SE = EX.	SE = EX.

NAD 83/2011

PROJECT REFERENCE NO. <b>B-3186 / B-5898</b>	SHEET NO. <b>2B-14</b>
RW SHEET NO.	
ROADWAY DESIGN ENGINEER	HYDRAULICS ENGINEER
<b>DOCUMENT NOT CONSIDERED FINAL UNLESS ALL SIGNATURES COMPLETED</b>	
HDR Engineering, Inc. of the Carolinas 555 Fayetteville St. Suite 900 Raleigh, N.C. 27601 N.C.B.E.L.S. License Number: F-0116	

LAKE JUNALUSKA ASSEMBLY, INC DB 34 PG 476



MATCHLINE -L- STA. 19+00, SEE SHEET 2B-13

MATCHLINE -L- STA. 31+00, SEE SHEET 2B-15

**DETOURS DETAIL**  
 -DET01\_WB\_X1-, -DET02\_EB\_X1- & -DET02\_EB-

-DET02_EB_X1-
PI Sta 21+33.35
$\Delta = 6'23'13.0" (RT)$
$D = 1'29'59.6"$
$L = 425.83'$
$T = 213.13'$
$R = 3,820.00'$
SE = 0.03
DS = 50mph

-DET02_WB_X1-
PI Sta 21+61.67
$\Delta = 3'50'57.6" (RT)$
$D = 1'56'08.4"$
$L = 198.86'$
$T = 99.47'$
$R = 2,960.00'$
SE = EX.

DELTA = 45°09'56"  
RADIUS = 130.02'  
ARC LENGTH = 102.49'

FOR -DET02\_EB\_X1- PROFILE, SEE PROFILE SHEET 25

PLOT DRIVER: NCDOT\_color\_eng\_50.plt  
USER: HBARE  
FILE: \

PENTABLE: B-3186 B-5898 NCDOT\_pshp.plt  
DATE: 1/13/2022  
TIME: 6:56:17 AM

COUNTRY CLUB REAL ESTATE OF WNC, INC.  
DB 915 PG 697

1