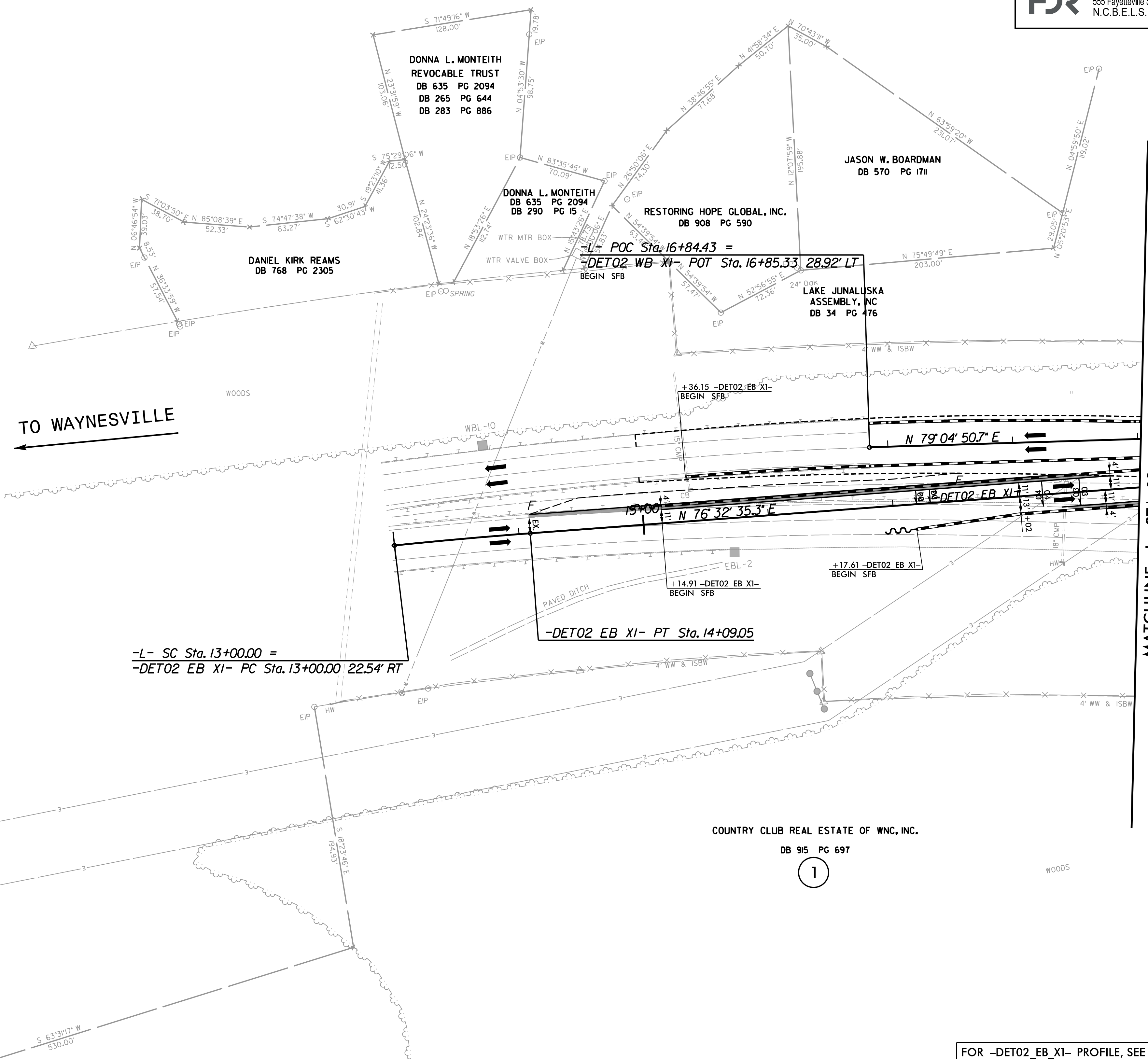


DETOURS DETAIL

-DET02_WB_X1- & -DET02_EB_X1-



PROJECT REFERENCE NO. B-3186 / B-5898		SHEET NO. 2B-13	
RW SHEET NO.			
ROADWAY DESIGN ENGINEER		HYDRAULICS ENGINEER	
DOCUMENT NOT CONSIDERED FINAL UNLESS ALL SIGNATURES COMPLETED			
HDR Engineering, Inc. of the Carolinas 555 Fayetteville St. Suite 900 Raleigh, N.C. 27601 N.C.B.E.L.S. License Number: F-01116			



BM #5
 -WBL- STA 5+00
 S 76°10'26.7" W Dist 626'
 ELEV. = 2709.07'

-DET02_EB_X1-
 PI Sta 13+54.53
 $\Delta = 1' 38' 39.4" (RT)$
 $D = 1' 30' 28.0"$
 $L = 109.05'$
 $T = 54.53'$
 $R = 3,800.00'$
 SE = EX.

MATCHLINE -L- STA. 19+00, SEE SHEET 2B-14

FOR -DET02_EB_X1- PROFILE, SEE PROFILE SHEET 25

PLOT DRIVER: NCDOT_color_eng_50.plt
 USER: HBARE
 FILE: \

PENTABLE: B-3186 B-5898 NCDOT_pshp.plt
 TIME: 6:56:14 AM

DATE: 1/13/2022