

DETOURS DETAIL

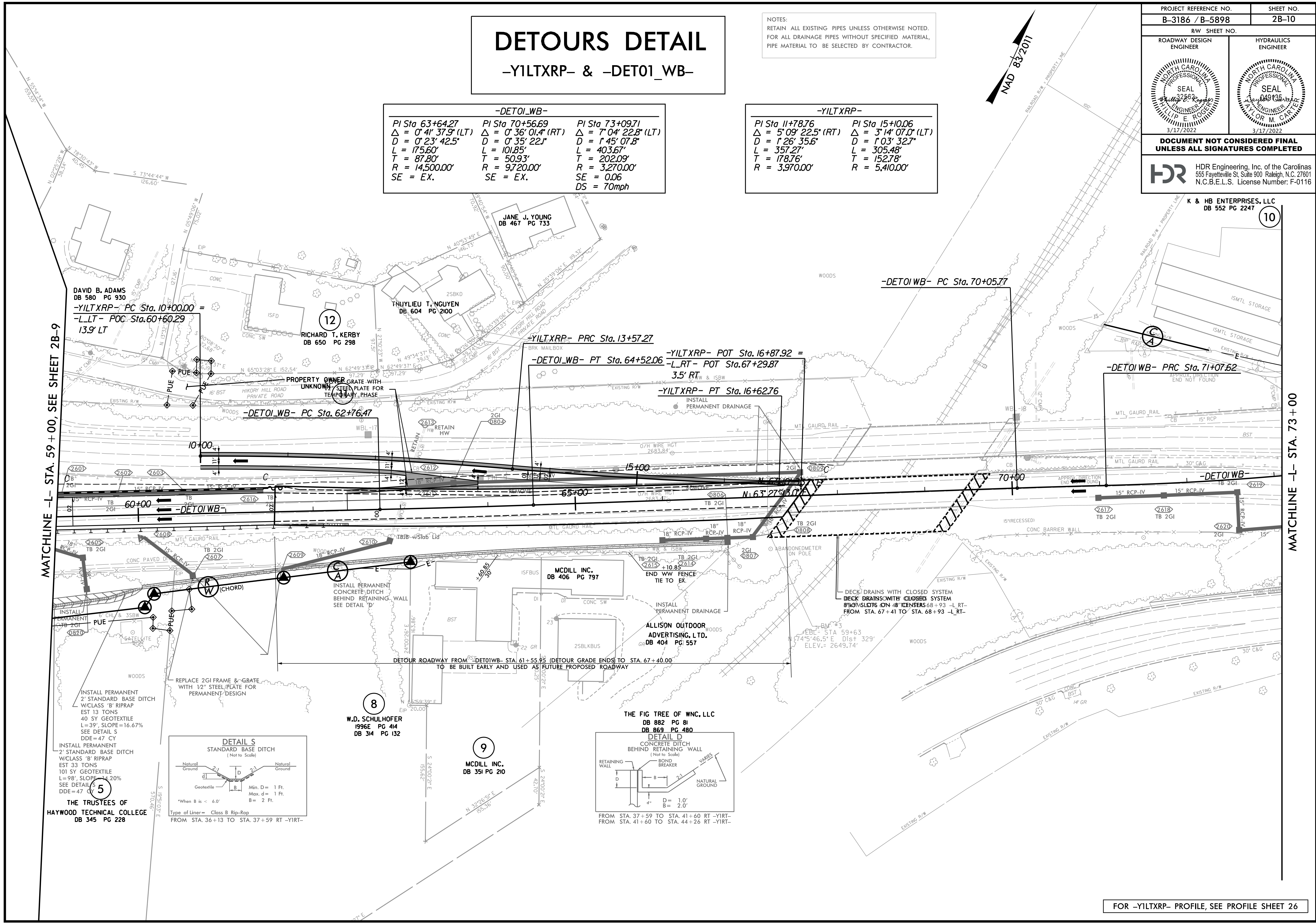
-YILT XRP- & -DETO1_WB-

NOTES:
RETAIN ALL EXISTING PIPES UNLESS OTHERWISE NOTED.
FOR ALL DRAINAGE PIPES WITHOUT SPECIFIED MATERIAL,
PIPE MATERIAL TO BE SELECTED BY CONTRACTOR.

-DETO1_WB-		
PI Sta 63+64.27	PI Sta 70+56.69	PI Sta 73+09.71
$\Delta = 0' 41' 37.9"$ (LT)	$\Delta = 0' 36' 01.4"$ (RT)	$\Delta = 7' 04' 22.8"$ (LT)
$D = 0' 23' 42.5"$	$D = 0' 35' 22.1"$	$D = 1' 45' 07.8"$
$L = 175.60'$	$L = 101.85'$	$L = 403.67'$
$T = 87.80'$	$T = 50.93'$	$T = 202.09'$
$R = 14,500.00'$	$R = 9,720.00'$	$R = 3,270.00'$
$SE = EX.$	$SE = EX.$	$SE = 0.06$
		$DS = 70mph$

-YILT XRP-	
PI Sta 11+78.76	PI Sta 15+10.06
$\Delta = 5' 09' 22.5"$ (RT)	$\Delta = 3' 14' 07.0"$ (LT)
$D = 1' 26' 35.6"$	$D = 1' 03' 32.7"$
$L = 357.27'$	$L = 305.48'$
$T = 178.76'$	$T = 152.78'$
$R = 3,970.00'$	$R = 5,410.00'$

PROJECT REFERENCE NO. B-3186 / B-5898	SHEET NO. 2B-10
RW SHEET NO.	
ROADWAY DESIGN ENGINEER	HYDRAULICS ENGINEER
DOCUMENT NOT CONSIDERED FINAL UNLESS ALL SIGNATURES COMPLETED	
HDR Engineering, Inc. of the Carolinas 555 Fayetteville St. Suite 900 Raleigh, N.C. 27601 N.C.B.E.L.S. License Number: F-0116	



MATCHLINE -L- STA. 59+00, SEE SHEET 2B-9

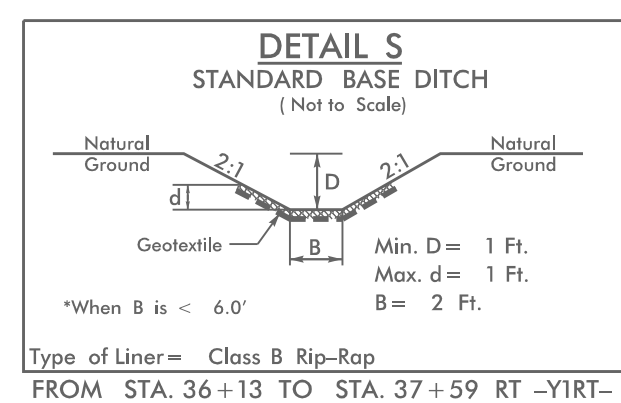
MATCHLINE -L- STA. 73+00

DAVID B. ADAMS
DB 580 PG 930
-YILT XRP- PC Sta. 10+00.00 =
-L_LT- POC Sta. 60+60.29
13.9' LT

INSTALL PERMANENT
2' STANDARD BASE DITCH
W/CLASS 'B' RIPRAP
EST 13 TONS
40 SY GEOTEXTILE
L=39', SLOPE=16.67%
SEE DETAIL S
DDE=47 CY

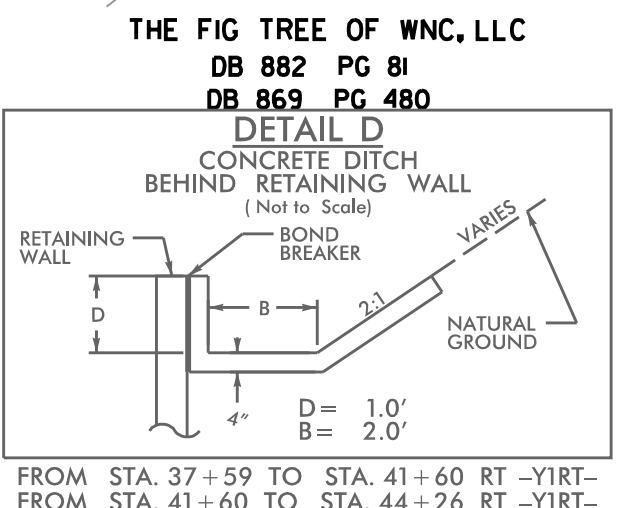
INSTALL PERMANENT
2' STANDARD BASE DITCH
W/CLASS 'B' RIPRAP
EST 33 TONS
101 SY GEOTEXTILE
L=98', SLOPE=14.20%
SEE DETAIL S
DDE=47 CY

THE TRUSTEES OF
HAYWOOD TECHNICAL COLLEGE
DB 345 PG 228



8
W.D. SCHULHOFER
1996E PG 414
DB 314 PG 132

9
MCDILL INC.
DB 351 PG 210



DECK DRAINS WITH CLOSED SYSTEM
DECK DRAINS WITH CLOSED SYSTEM
8% SLOPE ON 48\"/>

PLOT DRIVER: NCDOT_color_eng_50.plt
USER: HBARE
DATE: 1/13/2022
TIME: 6:56:04 AM
PENTABLE: B-3186 B-5898 NCDOT_pshp.plt
FILE: