



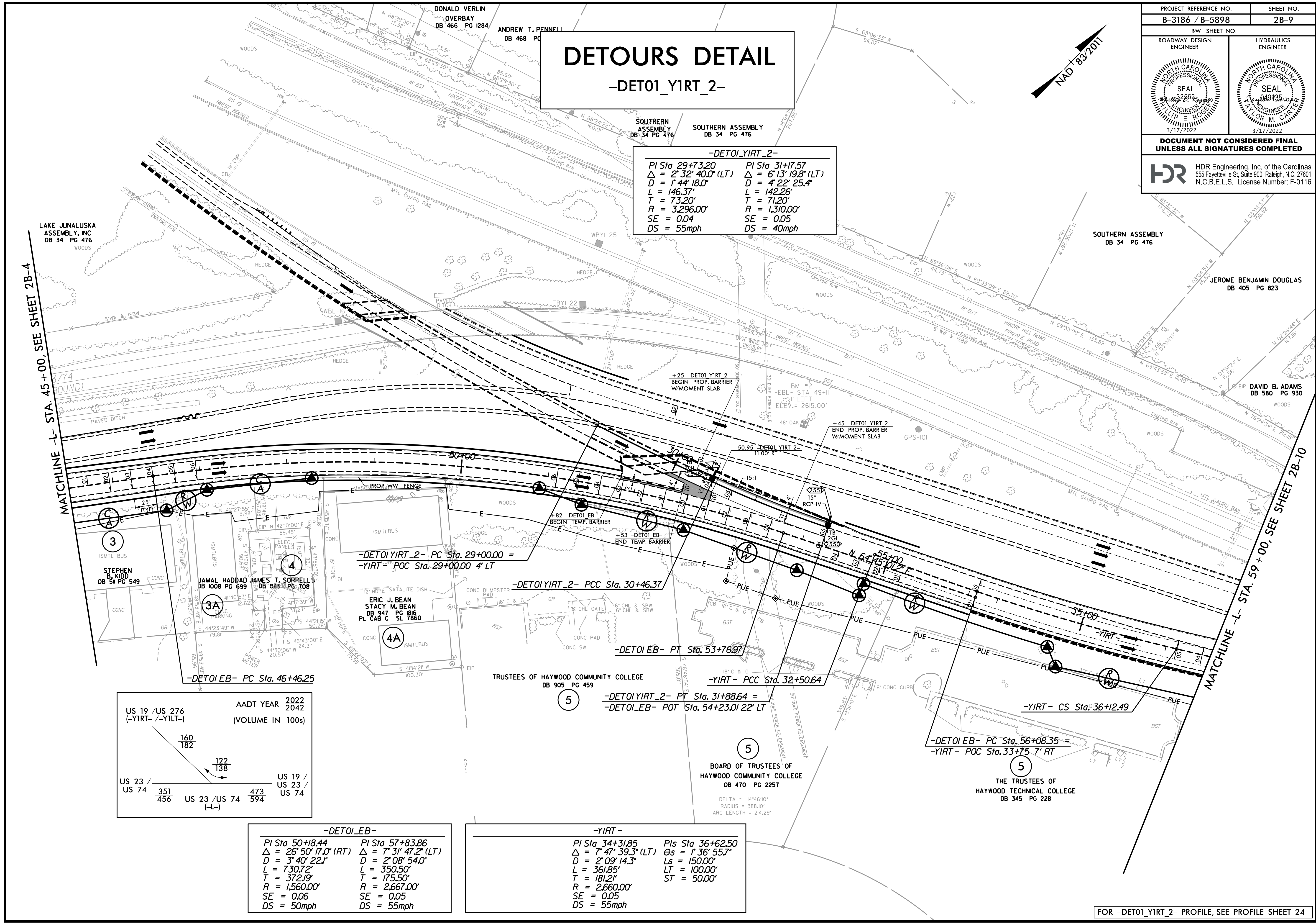
# DETOURS DETAIL

## -DETO1\_YIRT\_2-

PROJECT REFERENCE NO. <b>B-3186 / B-5898</b>	SHEET NO. <b>2B-9</b>
RW SHEET NO.	
ROADWAY DESIGN ENGINEER	HYDRAULICS ENGINEER
	
<b>DOCUMENT NOT CONSIDERED FINAL UNLESS ALL SIGNATURES COMPLETED</b>	

**HDR** HDR Engineering, Inc. of the Carolinas  
555 Fayetteville St. Suite 900 Raleigh, N.C. 27601  
N.C.B.E.L.S. License Number: F-0116

-DETO1_YIRT_2-	
PI Sta 29+73.20	PI Sta 31+17.57
$\Delta = 2^{\circ} 32' 40.0''$ (LT)	$\Delta = 6^{\circ} 13' 19.8''$ (LT)
D = 1' 44' 18.0"	D = 4' 22' 25.4"
L = 146.37'	L = 142.26'
T = 73.20'	T = 71.20'
R = 3,296.00'	R = 1,310.00'
SE = 0.04	SE = 0.05
DS = 55mph	DS = 40mph



US 19 / US 276 (-YIRT- / -YILT-)	AADT YEAR 2022 2042 (VOLUME IN 100s)
$\frac{160}{182}$	
$\frac{122}{138}$	
US 23 / US 74 $\frac{351}{456}$	US 19 / US 23 / US 74 $\frac{473}{594}$
US 23 / US 74 (-L-)	

-DETO1_EB-	
PI Sta 50+18.44	PI Sta 57+83.86
$\Delta = 26^{\circ} 50' 17.0''$ (RT)	$\Delta = 7^{\circ} 31' 47.2''$ (LT)
D = 3' 40' 22.1"	D = 2' 08' 54.0"
L = 730.72'	L = 350.50'
T = 372.19'	T = 175.50'
R = 1,560.00'	R = 2,667.00'
SE = 0.06	SE = 0.05
DS = 50mph	DS = 55mph

-YIRT-		
PI Sta 34+31.85	PIs Sta 36+62.50	
$\Delta = 7^{\circ} 47' 39.3''$ (LT)	$\Delta = 1^{\circ} 36' 55.7''$	
D = 2' 09' 14.3"	Ls = 150.00'	
L = 361.85'	LT = 100.00'	
T = 181.21'	ST = 50.00'	
R = 2,660.00'		
SE = 0.05		
DS = 55mph		

PLOT DRIVER: NCDOT\_pdf\_color\_eng\_50.plt  
 USER: HBARE  
 FILE: \

PENTABLE: B-3186 B-5898 NCDOT\_pshp.plt  
 TIME: 6:56:01 AM  
 DATE: 1/13/2022

FOR -DETO1\_YIRT\_2- PROFILE, SEE PROFILE SHEET 24