

PROJECT REFERENCE NO. B-3186 / B-5898		SHEET NO. 2B-7	
RW SHEET NO.			
ROADWAY DESIGN ENGINEER		HYDRAULICS ENGINEER	
DOCUMENT NOT CONSIDERED FINAL UNLESS ALL SIGNATURES COMPLETED			
HDR Engineering, Inc. of the Carolinas 555 Fayetteville St. Suite 900 Raleigh, N.C. 27601 N.C.B.E.L.S. License Number: F-0116			

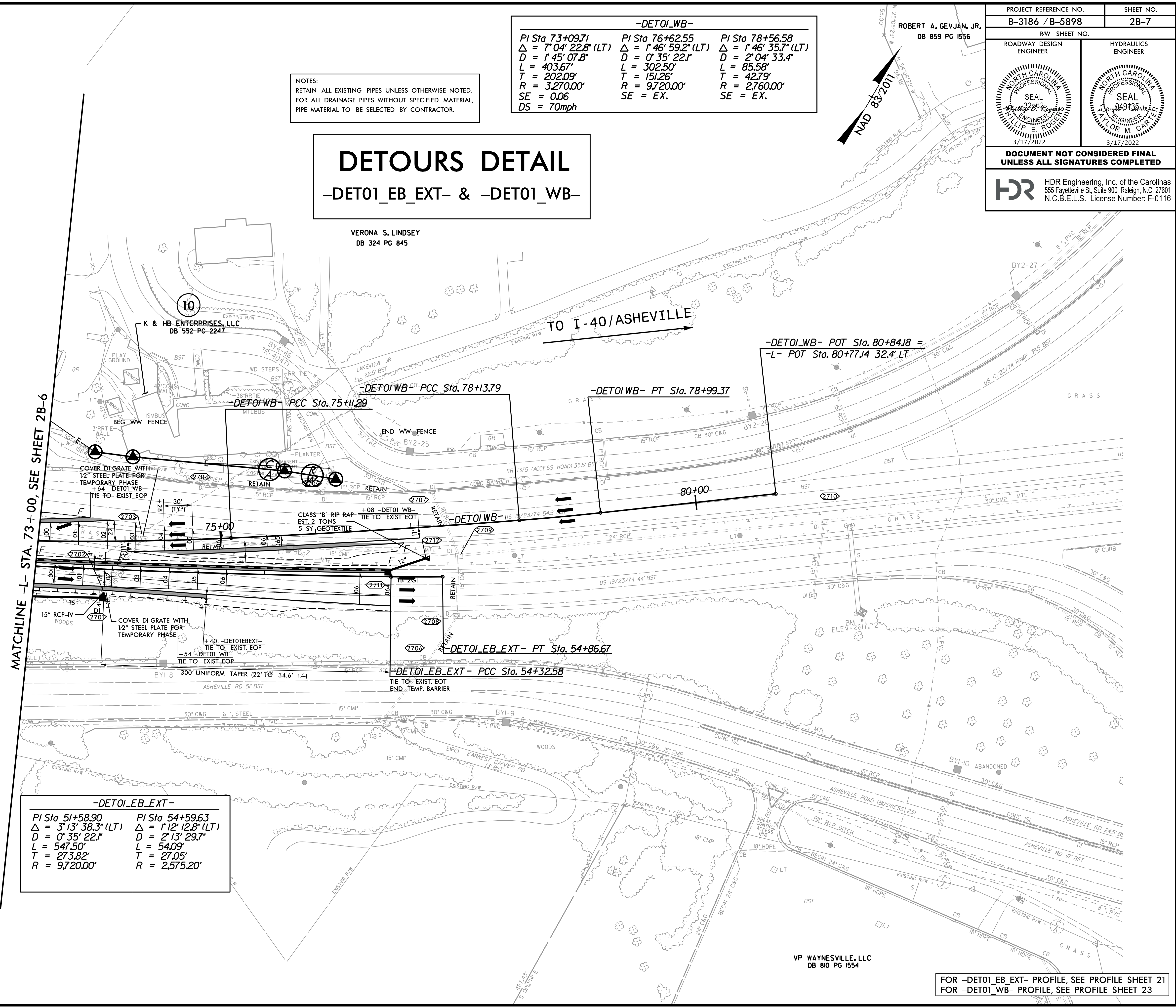
-DETOI_WB-		
PI Sta 73+09.71	PI Sta 76+62.55	PI Sta 78+56.58
$\Delta = 7'04'22.8"$ (LT)	$\Delta = 1'46'59.2"$ (LT)	$\Delta = 1'46'35.7"$ (LT)
$D = 1'45'07.8"$	$D = 0'35'22.1"$	$D = 2'04'33.4"$
$L = 403.67'$	$L = 302.50'$	$L = 85.58'$
$T = 202.09'$	$T = 151.26'$	$T = 42.79'$
$R = 3,270.00'$	$R = 9,720.00'$	$R = 2,760.00'$
$SE = 0.06$	$SE = EX.$	$SE = EX.$
$DS = 70\text{mph}$		

NOTES:
 RETAIN ALL EXISTING PIPES UNLESS OTHERWISE NOTED.
 FOR ALL DRAINAGE PIPES WITHOUT SPECIFIED MATERIAL,
 PIPE MATERIAL TO BE SELECTED BY CONTRACTOR.

DETOURS DETAIL

-DETOI_EB_EXT- & -DETOI_WB-

VERONA S. LINDSEY
 DB 324 PG 845



-DETOI_EB_EXT-	
PI Sta 51+58.90	PI Sta 54+59.63
$\Delta = 3'13'38.3"$ (LT)	$\Delta = 1'12'12.8"$ (LT)
$D = 0'35'22.1"$	$D = 2'13'29.7"$
$L = 547.50'$	$L = 54.09'$
$T = 273.82'$	$T = 27.05'$
$R = 9,720.00'$	$R = 2,575.20'$

FOR -DETOI_EB_EXT- PROFILE, SEE PROFILE SHEET 21
 FOR -DETOI_WB- PROFILE, SEE PROFILE SHEET 23

PLOT DRIVER: NCDOT_color_eng_50.plt
 USER: HBARE
 FILE: \

PENTABLE: B-3186 B-5898 NCDOT_pshp.plt
 TIME: 6:56:55 AM
 DATE: 1/13/2022