

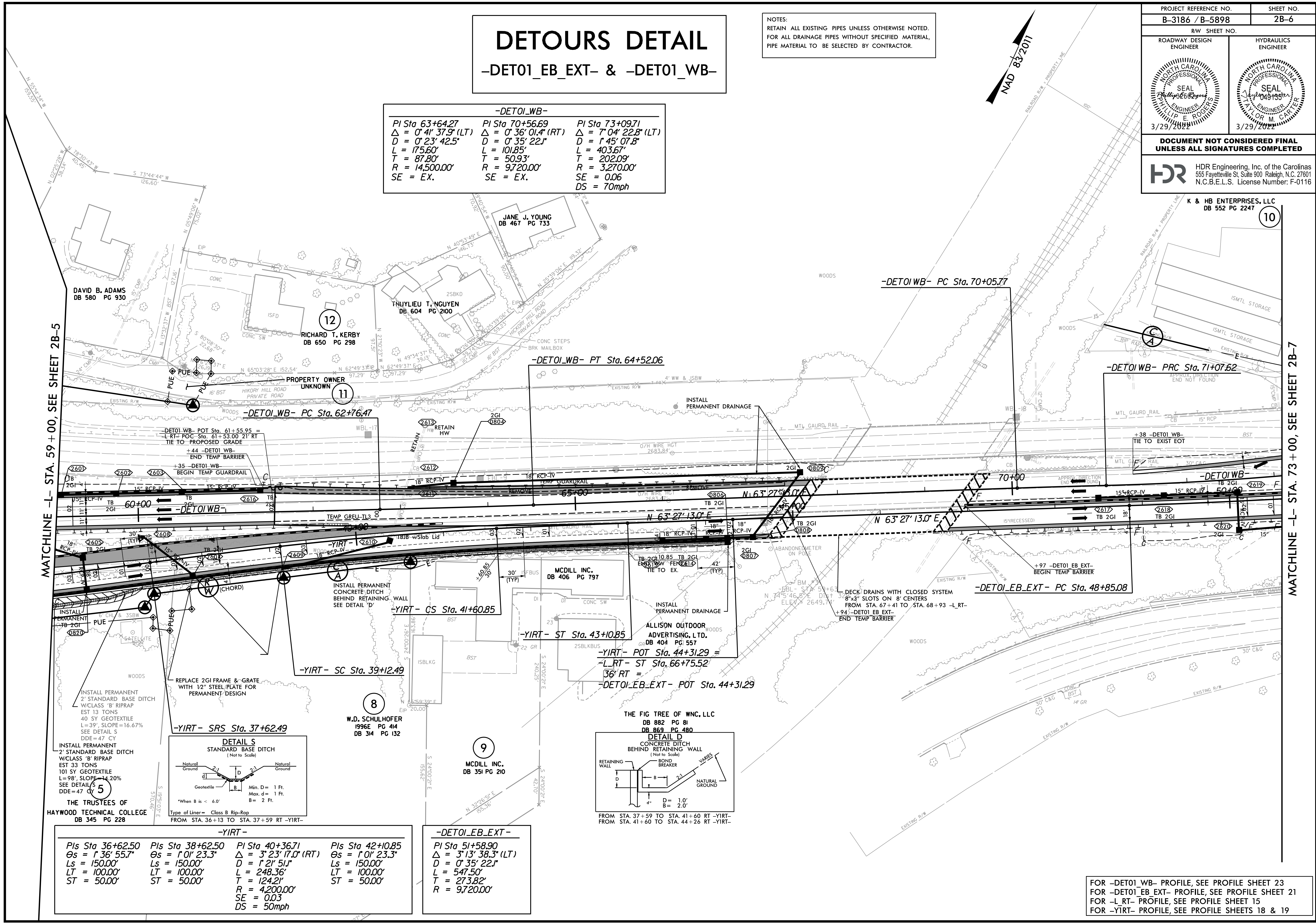
DETOURS DETAIL

-DETO1_EB_EXT- & -DETO1_WB-

NOTES:
RETAIN ALL EXISTING PIPES UNLESS OTHERWISE NOTED.
FOR ALL DRAINAGE PIPES WITHOUT SPECIFIED MATERIAL,
PIPE MATERIAL TO BE SELECTED BY CONTRACTOR.

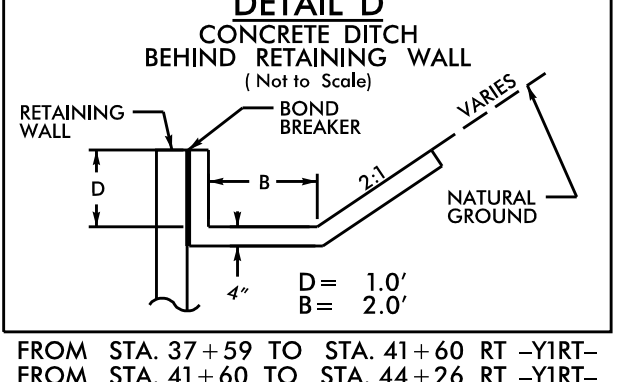
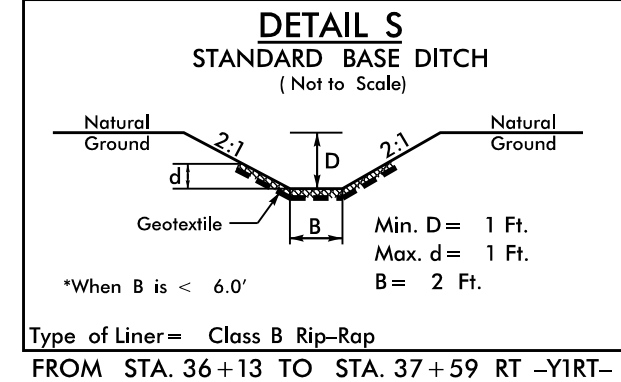
PROJECT REFERENCE NO. B-3186 / B-5898	SHEET NO. 2B-6
RW SHEET NO.	
ROADWAY DESIGN ENGINEER	HYDRAULICS ENGINEER
DOCUMENT NOT CONSIDERED FINAL UNLESS ALL SIGNATURES COMPLETED	
HDR Engineering, Inc. of the Carolinas 555 Fayetteville St. Suite 900 Raleigh, N.C. 27601 N.C.B.E.L.S. License Number: F-0116	

-DETO1_WB-		
PI Sta 63+64.27	PI Sta 70+56.69	PI Sta 73+09.71
$\Delta = 0' 41' 37.9" (LT)$	$\Delta = 0' 36' 01.4" (RT)$	$\Delta = 7' 04' 22.8" (LT)$
$D = 0' 23' 42.5"$	$D = 0' 35' 22.1"$	$D = 1' 45' 07.8"$
$L = 175.60'$	$L = 101.85'$	$L = 403.67'$
$T = 87.80'$	$T = 50.93'$	$T = 202.09'$
$R = 14,500.00'$	$R = 9,720.00'$	$R = 3,270.00'$
$SE = EX.$	$SE = EX.$	$SE = 0.06$
		$DS = 70mph$



-YIRT-			
PIs Sta 36+62.50	PIs Sta 38+62.50	PI Sta 40+36.71	PIs Sta 42+10.85
$\Theta s = 1' 36' 55.7"$	$\Theta s = 1' 01' 23.3"$	$\Delta = 3' 23' 17.0" (RT)$	$\Theta s = 1' 01' 23.3"$
$Ls = 150.00'$	$Ls = 150.00'$	$D = 1' 21' 51.1"$	$Ls = 150.00'$
$LT = 100.00'$	$LT = 100.00'$	$L = 248.36'$	$LT = 100.00'$
$ST = 50.00'$	$ST = 50.00'$	$T = 124.21'$	$ST = 50.00'$
		$R = 4,200.00'$	
		$SE = 0.03$	
		$DS = 50mph$	

-DETO1_EB_EXT-
PI Sta 51+58.90
$\Delta = 3' 13' 38.3" (LT)$
$D = 0' 35' 22.1"$
$L = 547.50'$
$T = 273.82'$
$R = 9,720.00'$



THE TRUSTEES OF
HAYWOOD TECHNICAL COLLEGE
DB 345 PG 228

W.D. SCHULHOFER
1996E PG 414
DB 314 PG 132

MCDILL INC.
DB 351 PG 210

THE FIG TREE OF WNC, LLC
DB 882 PG 8
DB 869 PG 480

INSTALL PERMANENT
2' STANDARD BASE DITCH
W/CLASS 'B' RIPRAP
EST 33 TONS
101 SY GEOTEXTILE
L=98', SLOPE=14.20%
SEE DETAIL S
DDE=47 CY

INSTALL PERMANENT
2' STANDARD BASE DITCH
W/CLASS 'B' RIPRAP
EST 13 TONS
40 SY GEOTEXTILE
L=39', SLOPE=16.67%
SEE DETAIL S
DDE=47 CY

REPLACE 2GI FRAME & GRATE
WITH 12" STEEL PLATE FOR
PERMANENT DESIGN

INSTALL PERMANENT
CONCRETE DITCH
BEHIND RETAINING WALL
SEE DETAIL 'D'

DAVID B. ADAMS
DB 580 PG 930

RICHARD T. KERBY
DB 650 PG 298

JANE J. YOUNG
DB 467 PG 733

THUYLIEU T. NGUYEN
DB 604 PG 200

MCDILL INC.
DB 406 PG 797

ALLISON OUTDOOR
ADVERTISING, L.T.D.
DB 404 PG 557

K & HB ENTERPRISES, LLC
DB 552 PG 2247

PLOT DRIVERS: NCDOT_color_eng_50.plt
USER: HBARE
DATE: 3/29/2022
TIME: 6:15:06 AM
FILE: NCDOT\NCDOT-B3186_T02.c. \6.0.CAD.BTM.6.2_Work.In_Progress\B-3186-B-5898\Roadway\Pro\B3186-B5898.RDY_PSH02B-06.dgn

FOR -DETO1_WB- PROFILE, SEE PROFILE SHEET 23
FOR -DETO1_EB_EXT- PROFILE, SEE PROFILE SHEET 21
FOR -L_RT- PROFILE, SEE PROFILE SHEET 15
FOR -YIRT- PROFILE, SEE PROFILE SHEETS 18 & 19