

PROJECT REFERENCE NO. <b>B-3186 / B-5898</b>	SHEET NO. <b>2B-3</b>
RW SHEET NO.	
ROADWAY DESIGN ENGINEER	HYDRAULICS ENGINEER
<b>DOCUMENT NOT CONSIDERED FINAL UNLESS ALL SIGNATURES COMPLETED</b>	
HDR Engineering, Inc. of the Carolinas 555 Fayetteville St. Suite 900 Raleigh, N.C. 27601 N.C.B.E.L.S. License Number: F-0116	

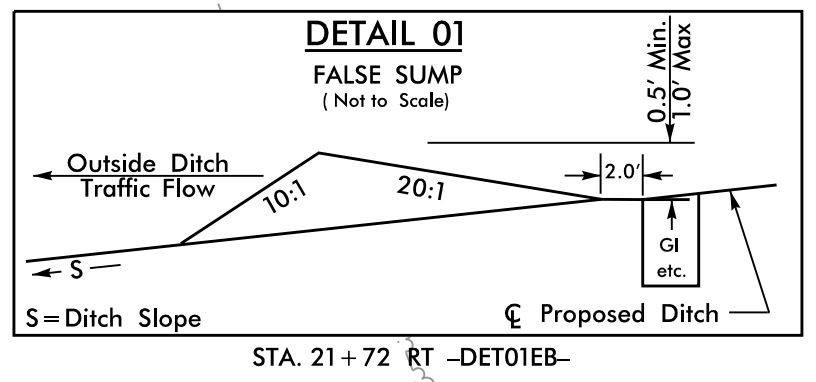
**-DETO1\_WB-**

PI Sta 16+83.35 Δ = 15° 33' 49.8" (RT) D = 2° 59' 03.0" L = 521.55' T = 262.39' R = 1,920.00' SE = 0.06 DS = 55mph	PI Sta 21+61.89 Δ = 7° 40' 35.0" (LT) D = 1° 45' 07.8" L = 438.11' T = 219.38' R = 3,270.00' SE = EX.	PIs Sta 26+97.21 Θs = 5° 50' 47.4" Ls = 300.00' LT = 200.11' ST = 100.10'	PI Sta 32+32.09 Δ = 32° 58' 05.3" (LT) D = 3° 53' 51.6" L = 845.84' T = 434.99' R = 1,470.00' SE = EX.
---	---	---	--

**-DETO1\_EB-**

PI Sta 18+51.60 Δ = 8° 37' 37.9" (RT) D = 2° 19' 10.8" L = 371.92' T = 186.31' R = 2,470.00' SE = EX.	PI Sta 22+05.12 Δ = 5° 49' 33.2" (LT) D = 1° 44' 10.4" L = 335.55' T = 167.92' R = 3,300.00' SE = 0.04 DS = 55mph	PI Sta 31+24.61 Δ = 36° 06' 19.5" (LT) D = 3° 47' 39.9" L = 951.54' T = 492.16' R = 1,510.00' SE = 0.07 DS = 55mph
---	--	---

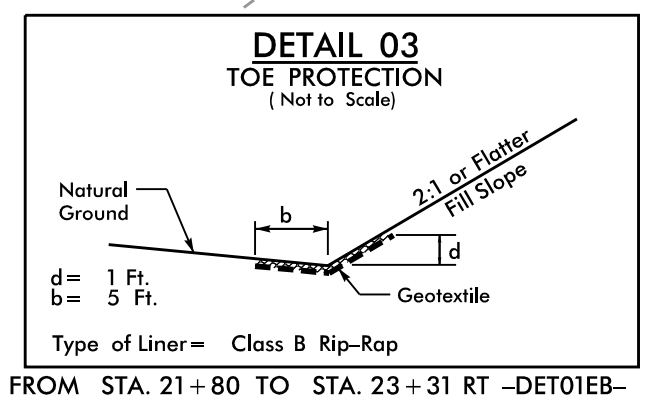
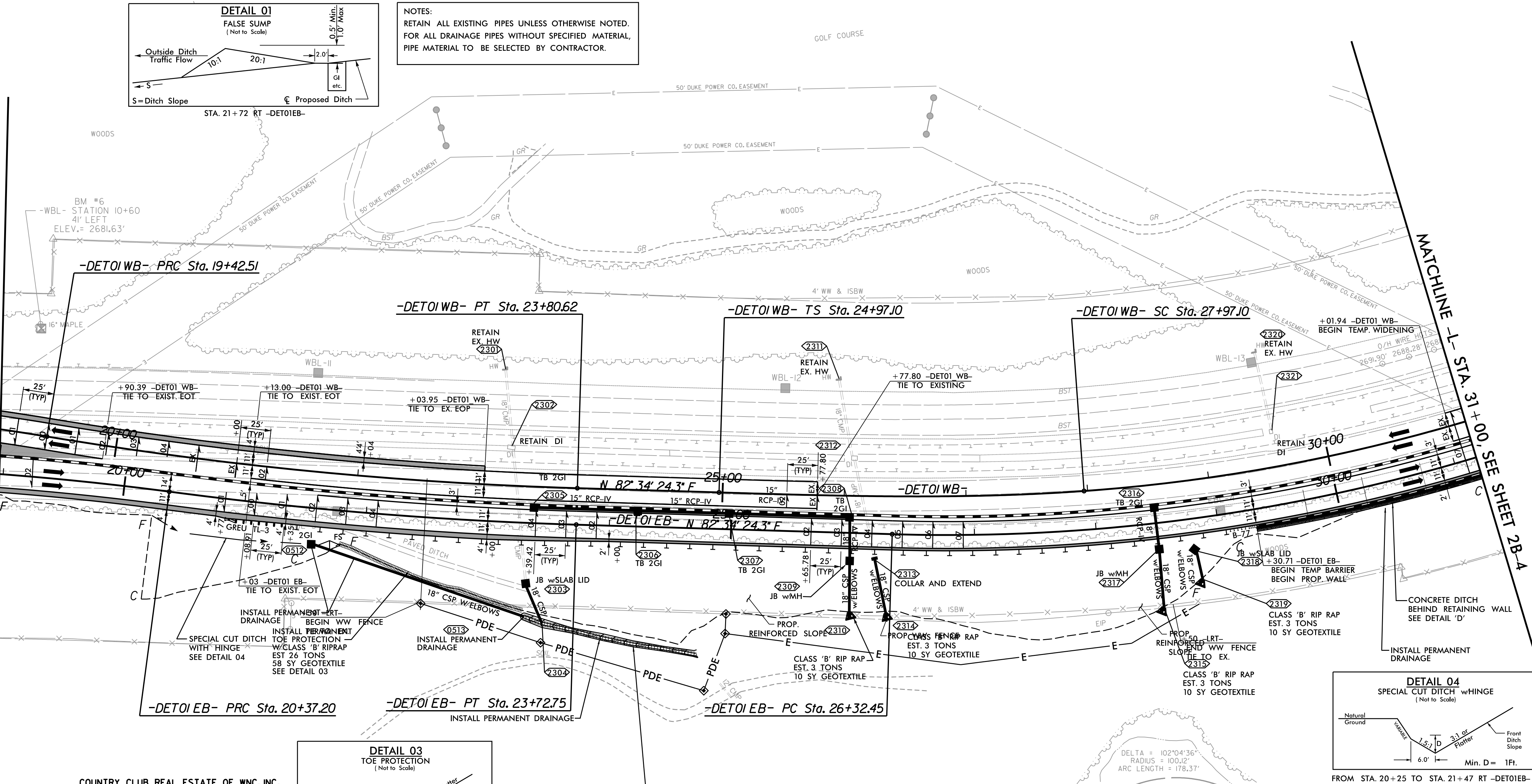
LAKE JUNALUSKA  
ASSEMBLY, INC  
DB 34 PG 476



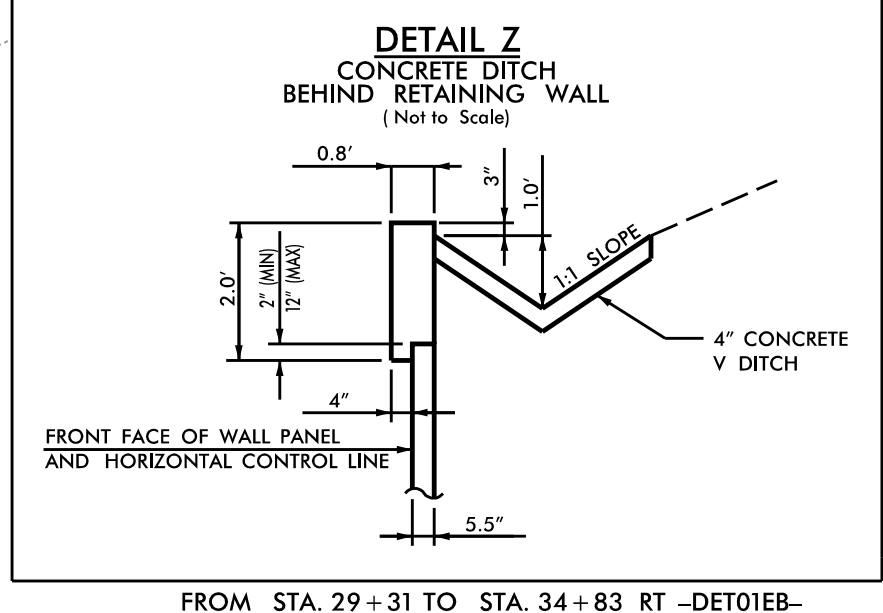
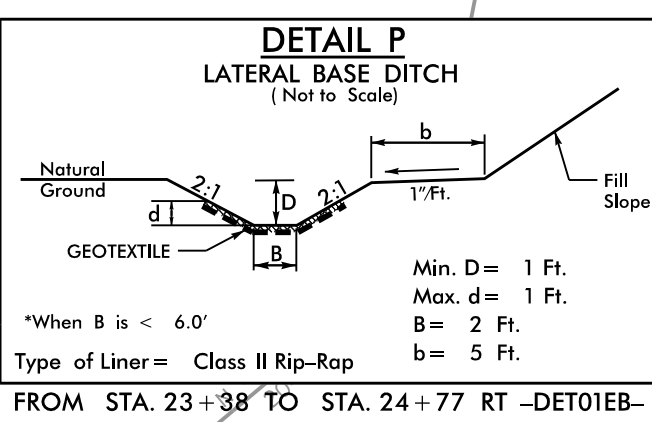
**NOTES:**  
RETAIN ALL EXISTING PIPES UNLESS OTHERWISE NOTED.  
FOR ALL DRAINAGE PIPES WITHOUT SPECIFIED MATERIAL,  
PIPE MATERIAL TO BE SELECTED BY CONTRACTOR.

MATCHLINE -L- STA. 19+00, SEE SHEET 2B-2

MATCHLINE 1-1 STA. 31+00, SEE SHEET 2B-4



**DESIGNER NOTE:**  
PERMANENT DRAINAGE STRUCTURES MAY NEED TO BE INSTALLED DURING THE CONSTRUCTION OF REINFORCED SOIL SLOPE.



FOR -DETO1\_EB- PROFILE, SEE PROFILE SHEET 20  
FOR -DETO1\_WB- PROFILE, SEE PROFILE SHEET 22

# DETOURS DETAIL

## -DETO1\_EB- & -DETO1\_WB-

PLOT DRIVER: NCDOT\_color\_eng\_50.plt  
 USER: HBARE  
 FILE:  
 PENTABLE: B-3186 B-5898 NCDOT\_pshp.plt  
 TIME: 6:55:43 AM  
 DATE: 1/13/2022  
 DB 915 PG 697